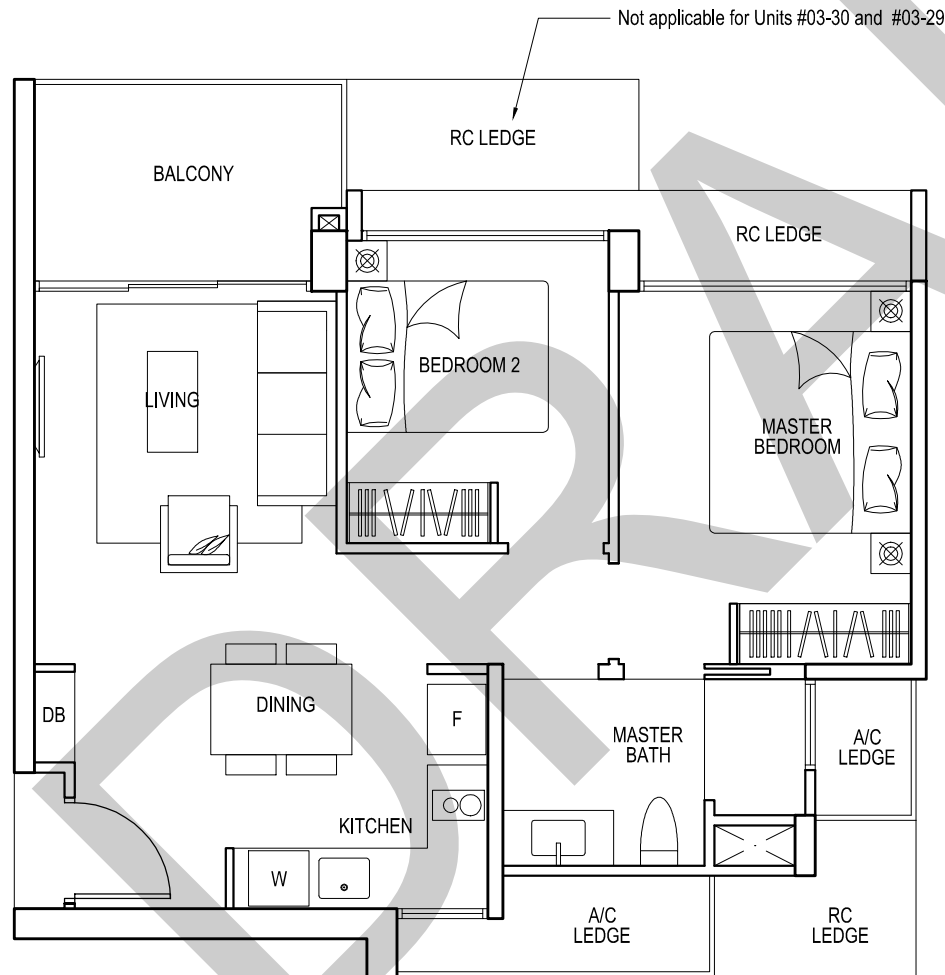
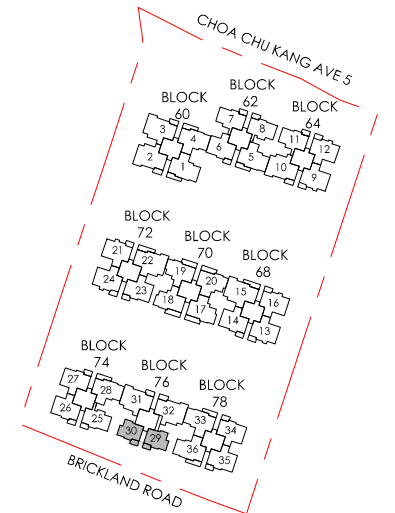


TYPE B1 2 - BEDROOM

STRATA SFA: 64 sq.m. / 689 sq.ft.

UNIT	MIRRORED
#04-30	#04-29
#06-30	#06-29
#08-30	#08-29
#10-30	#10-29
#12-30	#12-29
#14-30	#14-29



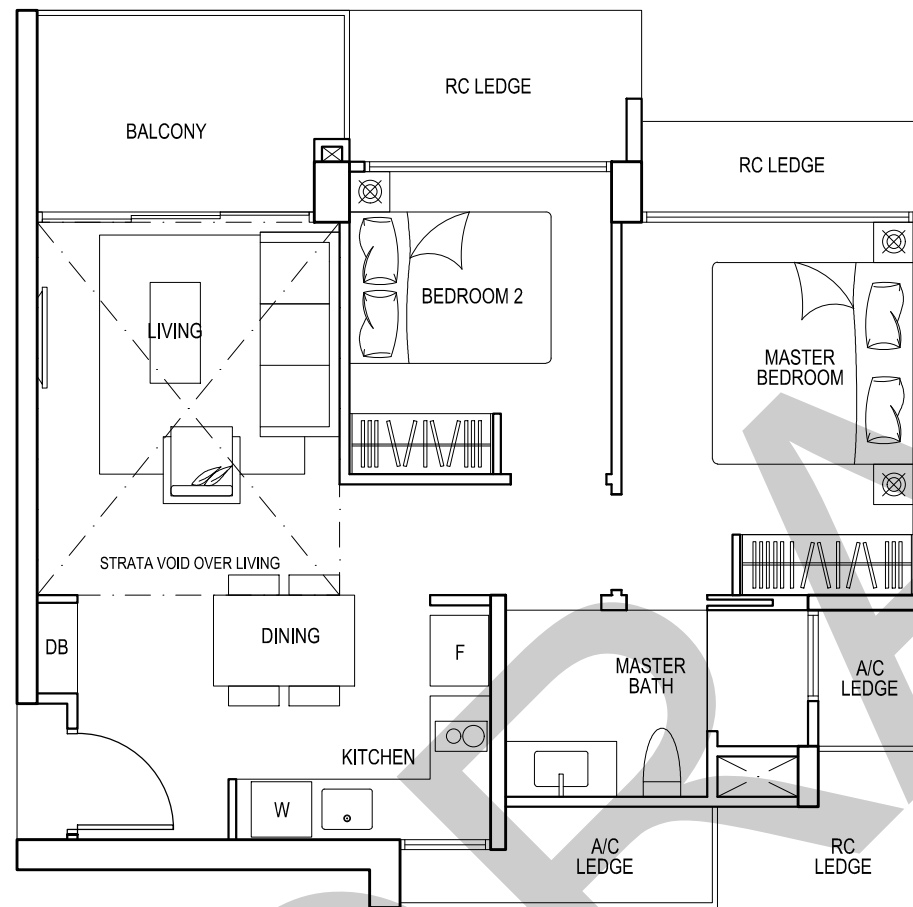
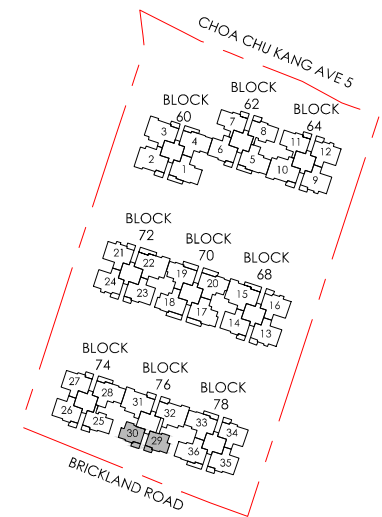
TYPE B1 2 - BEDROOM

STRATA SFA: 64 sq.m. / 689 sq.ft.

UNIT	MIRRORED
#03-30	#03-29
#05-30	#05-29
#07-30	#07-29
#09-30	#09-29
#11-30	#11-29
#13-30	#13-29
#15-30	#15-29



All areas stated herein include PES (private enclosed space), balcony, A/C Ledge and void where applicable. All areas and measurements stated herein are approximate and subject to adjustment on final survey. Layout / location of fan coil units, DB, electrical points, door swing directions and plaster ceiling boards are subject to Developer's sole discretion and final design. Please refer to the key plan for orientation.



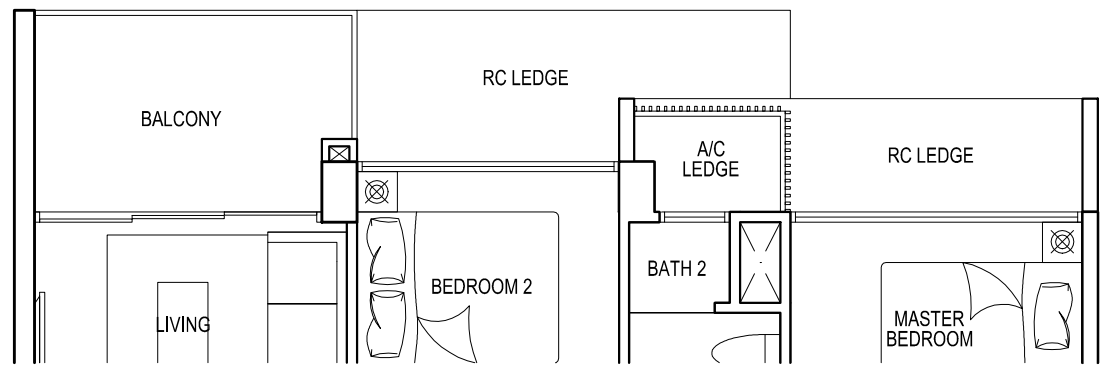
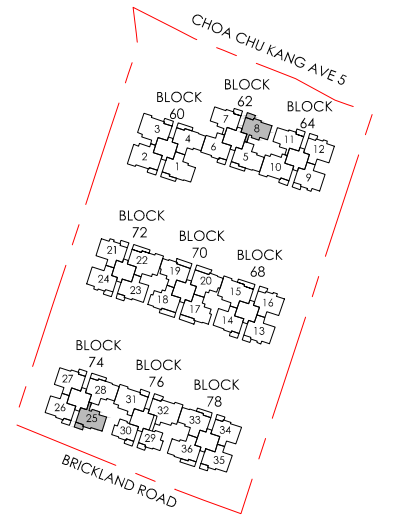
TYPE B1L
2 - BEDROOM

STRATA SFA: 76 sq.m. / 818 sq.ft.

UNIT #16-30 MIRRORED #16-29



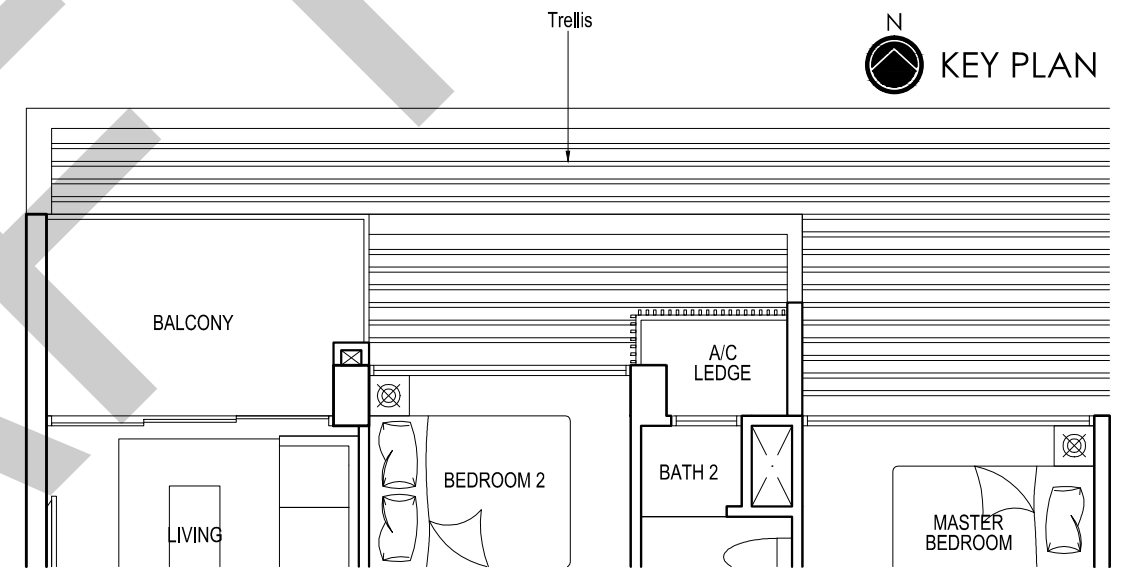
All areas stated herein include PES (private enclosed space), balcony, A/C Ledge and void where applicable. All areas and measurements stated herein are approximate and subject to adjustment on final survey. Layout / location of fan coil units, DB, electrical points, door swing directions and plaster ceiling boards are subject to Developer's sole discretion and final design. Please refer to the key plan for orientation.



**TYPE C1
3 - BEDROOM**

STRATA SFA: 82 sq.m. / 883 sq.ft.

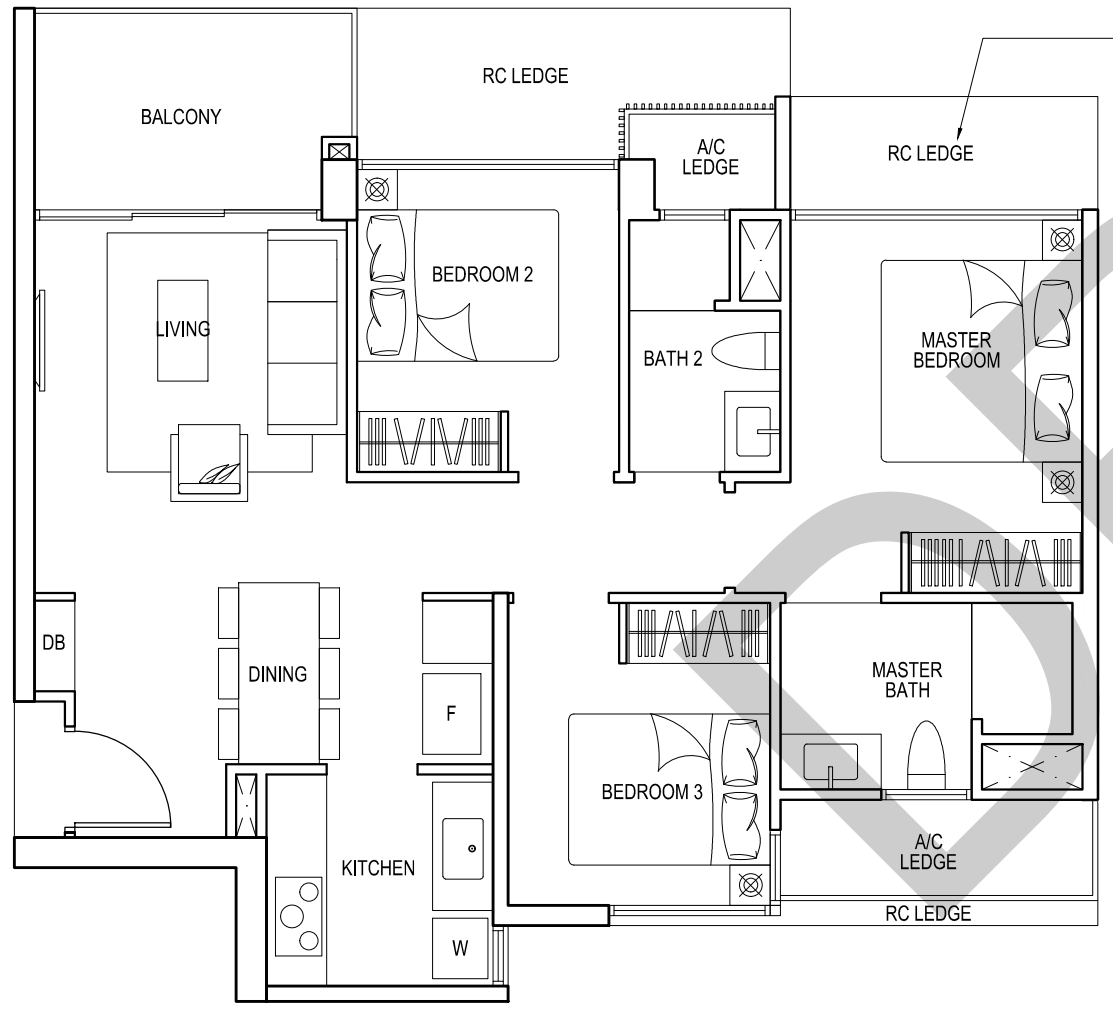
UNIT	MIRRORED
#04-08	#03-25
#06-08	#05-25
#08-08	#07-25
#12-08	#09-25
#14-08	#11-25
	#13-25
	#15-25



**TYPE C1
3 - BEDROOM**

STRATA SFA: 82 sq.m. / 883 sq.ft.

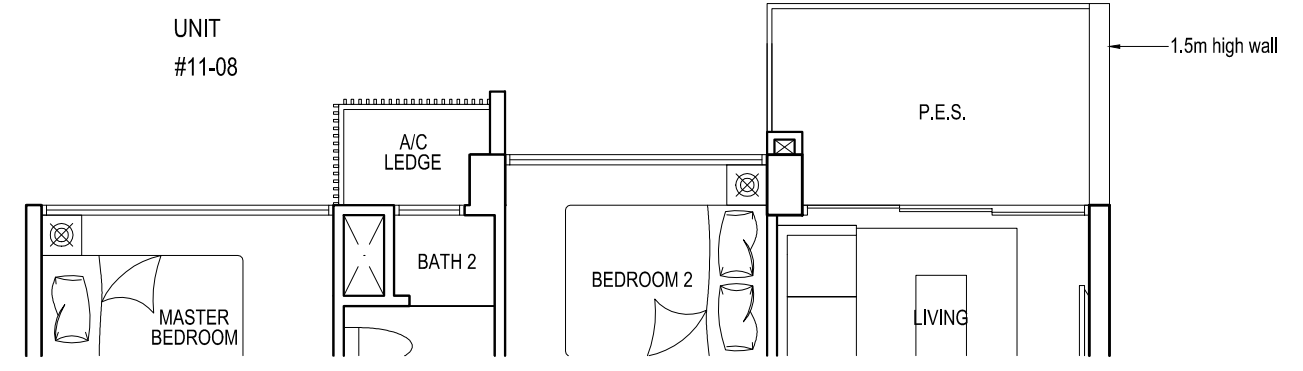
UNIT
#11-08



**TYPE C1
3 - BEDROOM**

STRATA SFA: 82 sq.m. / 883 sq.ft.

UNIT	MIRRORED
#03-08	#02-25
#05-08	#04-25
#07-08	#06-25
#13-08	#08-25
	#10-25
	#12-25
	#14-25



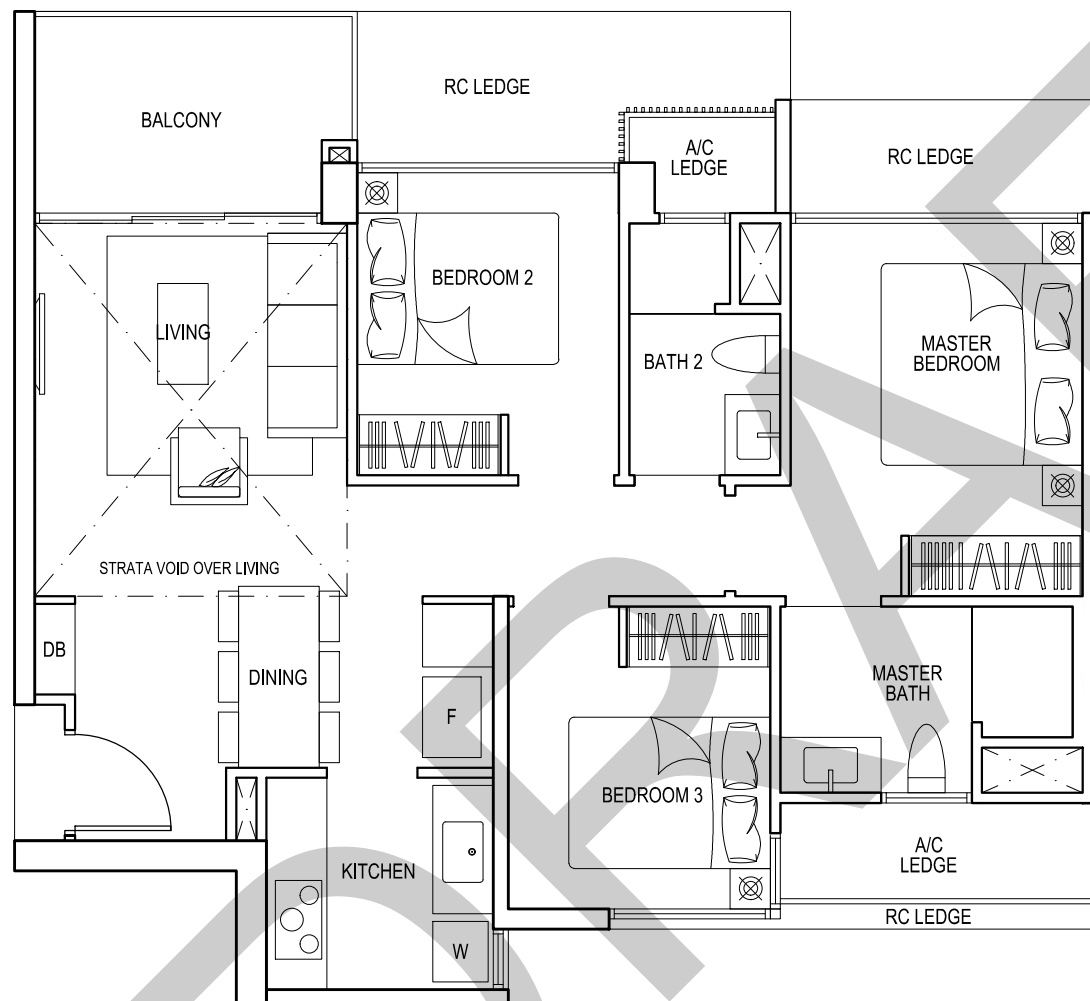
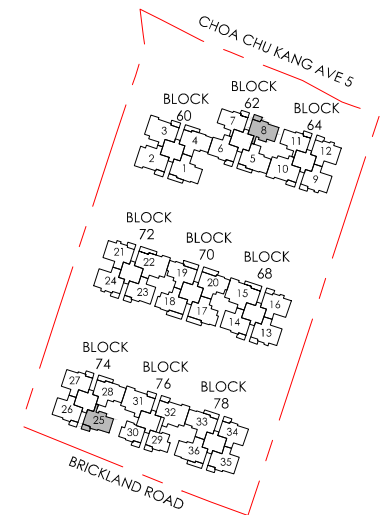
**TYPE C1p
3 - BEDROOM**

STRATA SFA: 82 sq.m. / 883 sq.ft.

UNIT
#01-25



All areas stated herein include PES (private enclosed space), balcony, A/C Ledge and void where applicable. All areas and measurements stated herein are approximate and subject to adjustment on final survey. Layout / location of fan coil units, DB, electrical points, door swing directions and plaster ceiling boards are subject to Developer's sole discretion and final design. Please refer to the key plan for orientation.



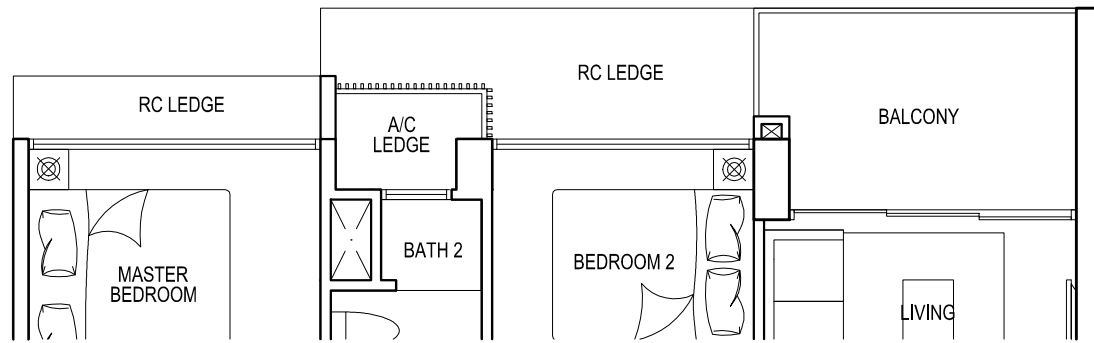
TYPE C1L
3 - BEDROOM

STRATA SFA: 94 sq.m. / 1012 sq.ft.

UNIT #15-08 MIRRORED #16-25



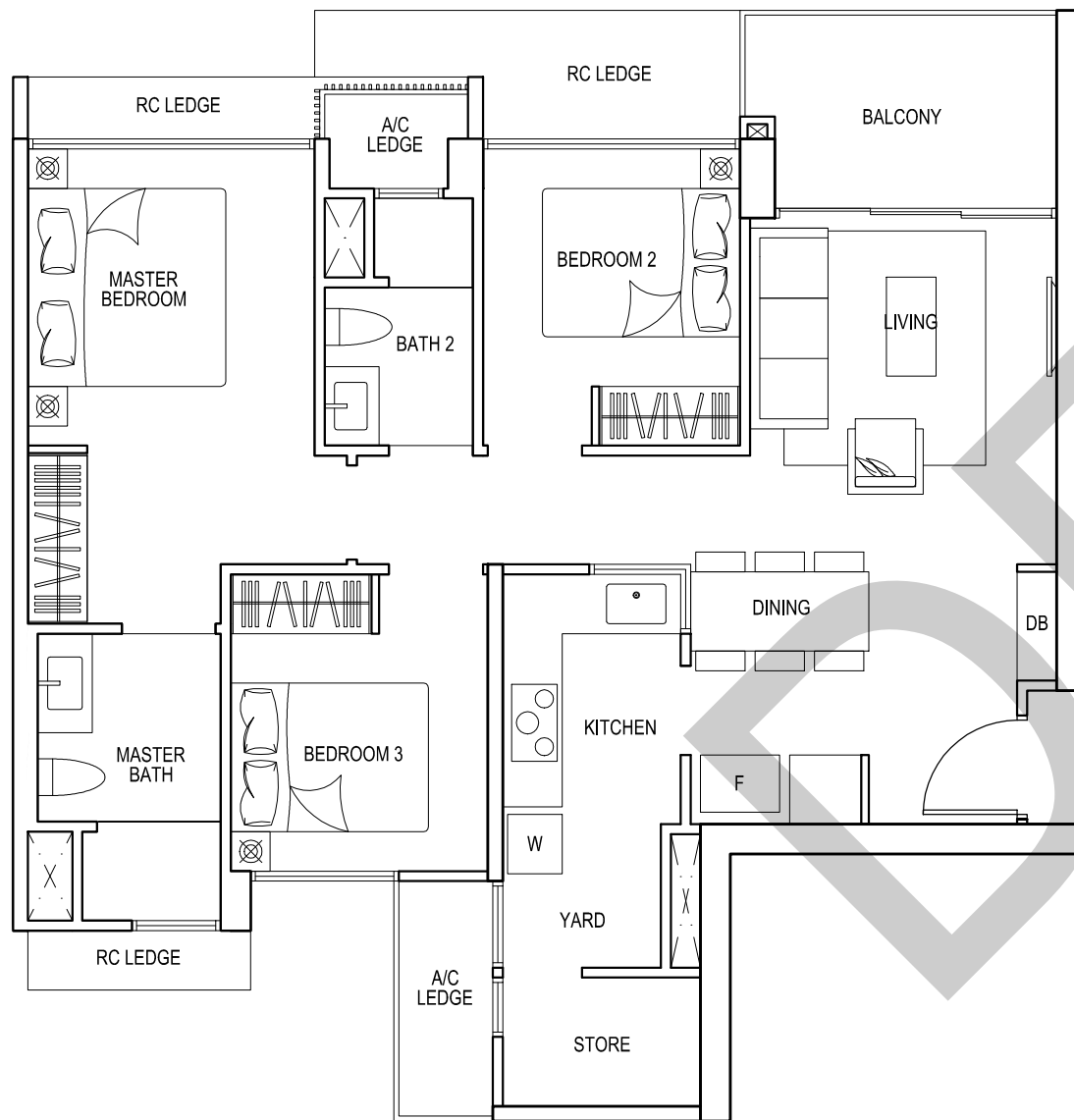
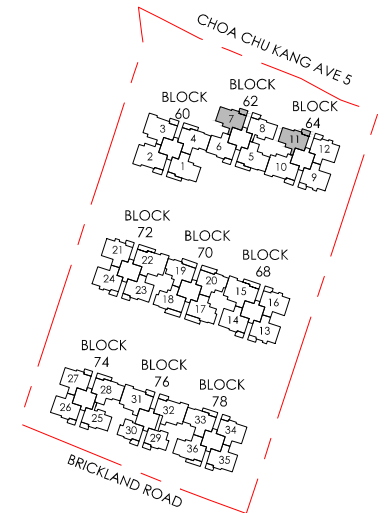
All areas stated herein include PES (private enclosed space), balcony, A/C Ledge and void where applicable. All areas and measurements stated herein are approximate and subject to adjustment on final survey. Layout / location of fan coil units, DB, electrical points, door swing directions and plaster ceiling boards are subject to Developer's sole discretion and final design. Please refer to the key plan for orientation.



**TYPE C2
3 - BEDROOM DELUXE**

STRATA SFA: 90 sq.m. / 969 sq.ft.

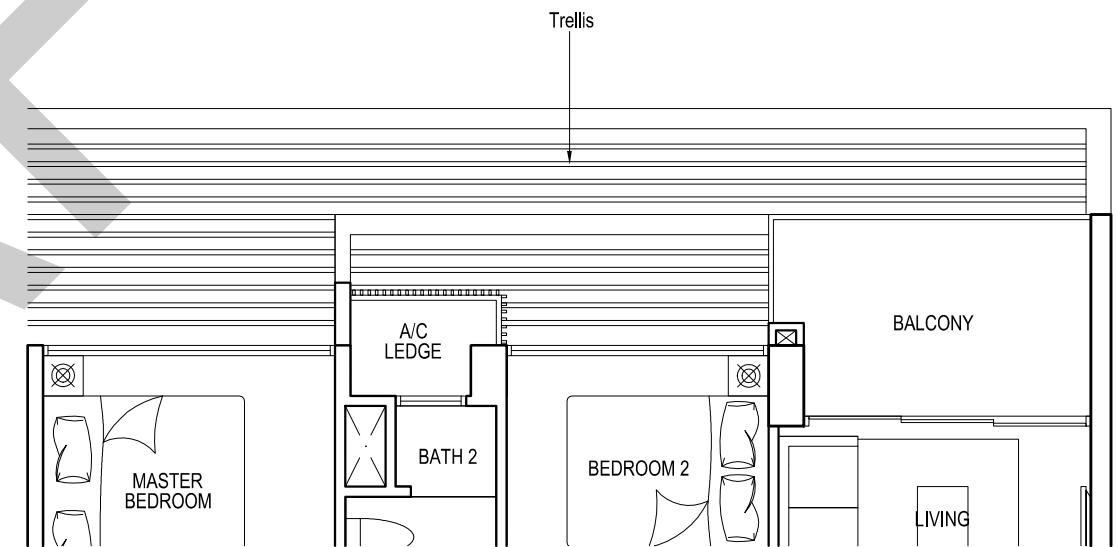
- UNIT
- #03-07 #03-11
 - #05-07 #05-11
 - #07-07 #07-11
 - #09-07 #13-11
 - #11-07
 - #13-07



**TYPE C2
3 - BEDROOM DELUXE**

STRATA SFA: 90 sq.m. / 969 sq.ft.

- UNIT
- #04-07 #02-11
 - #06-07 #04-11
 - #08-07 #06-11
 - #10-07 #08-11
 - #12-07 #12-11
 - #14-07 #14-11



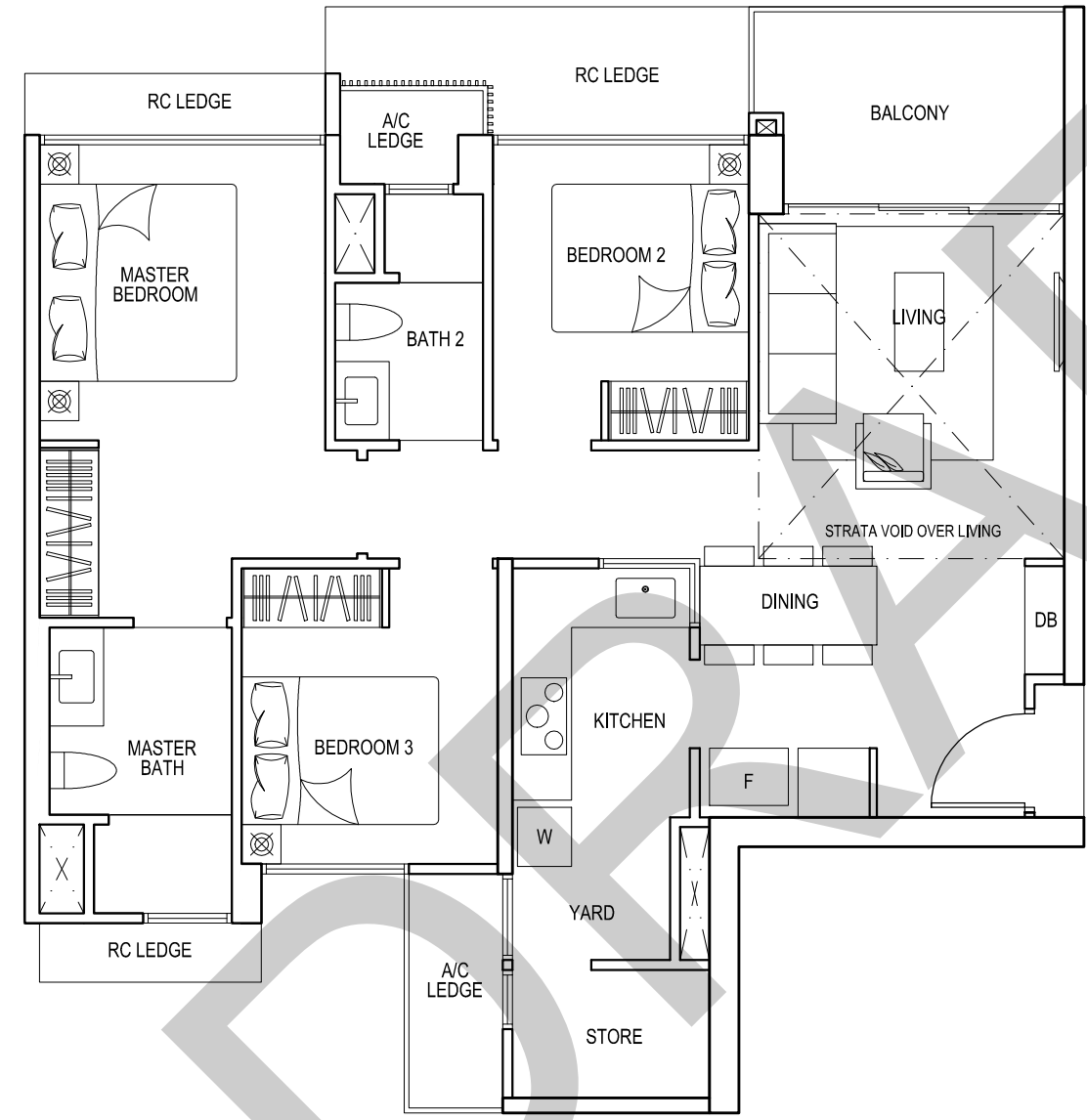
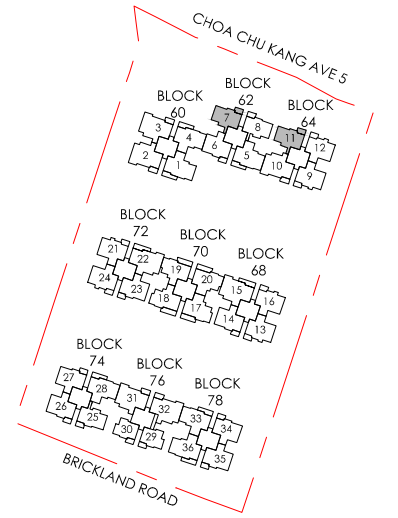
**TYPE C2
3 - BEDROOM DELUXE**

STRATA SFA: 90 sq.m. / 969 sq.ft.

- UNIT
- #11-11



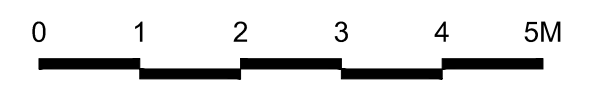
All areas stated herein include PES (private enclosed space), balcony, A/C Ledge and void where applicable. All areas and measurements stated herein are approximate and subject to adjustment on final survey. Layout / location of fan coil units, DB, electrical points, door swing directions and plaster ceiling boards are subject to Developer's sole discretion and final design. Please refer to the key plan for orientation.



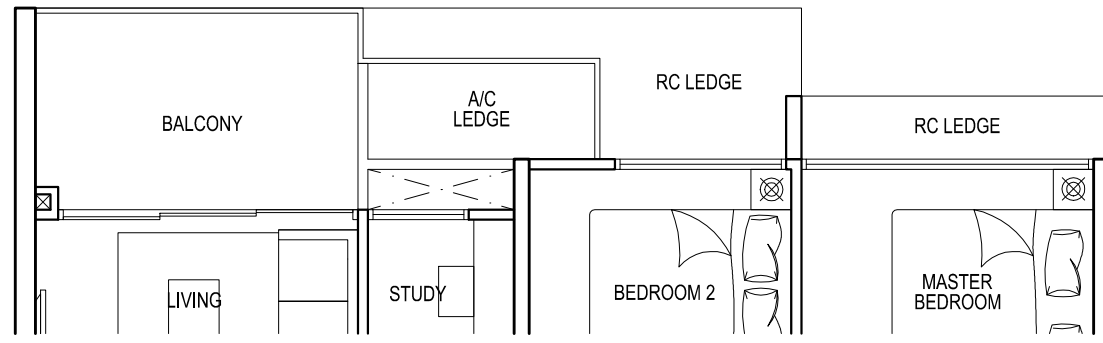
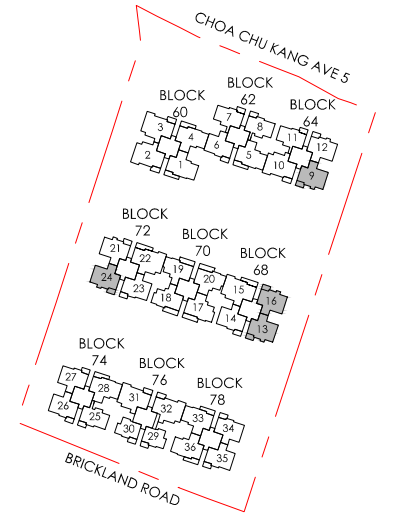
TYPE C2L
3 - BEDROOM DELUXE

STRATA SFA: 102 sq.m. / 1098 sq.ft.

UNIT
 #15-07 #15-11



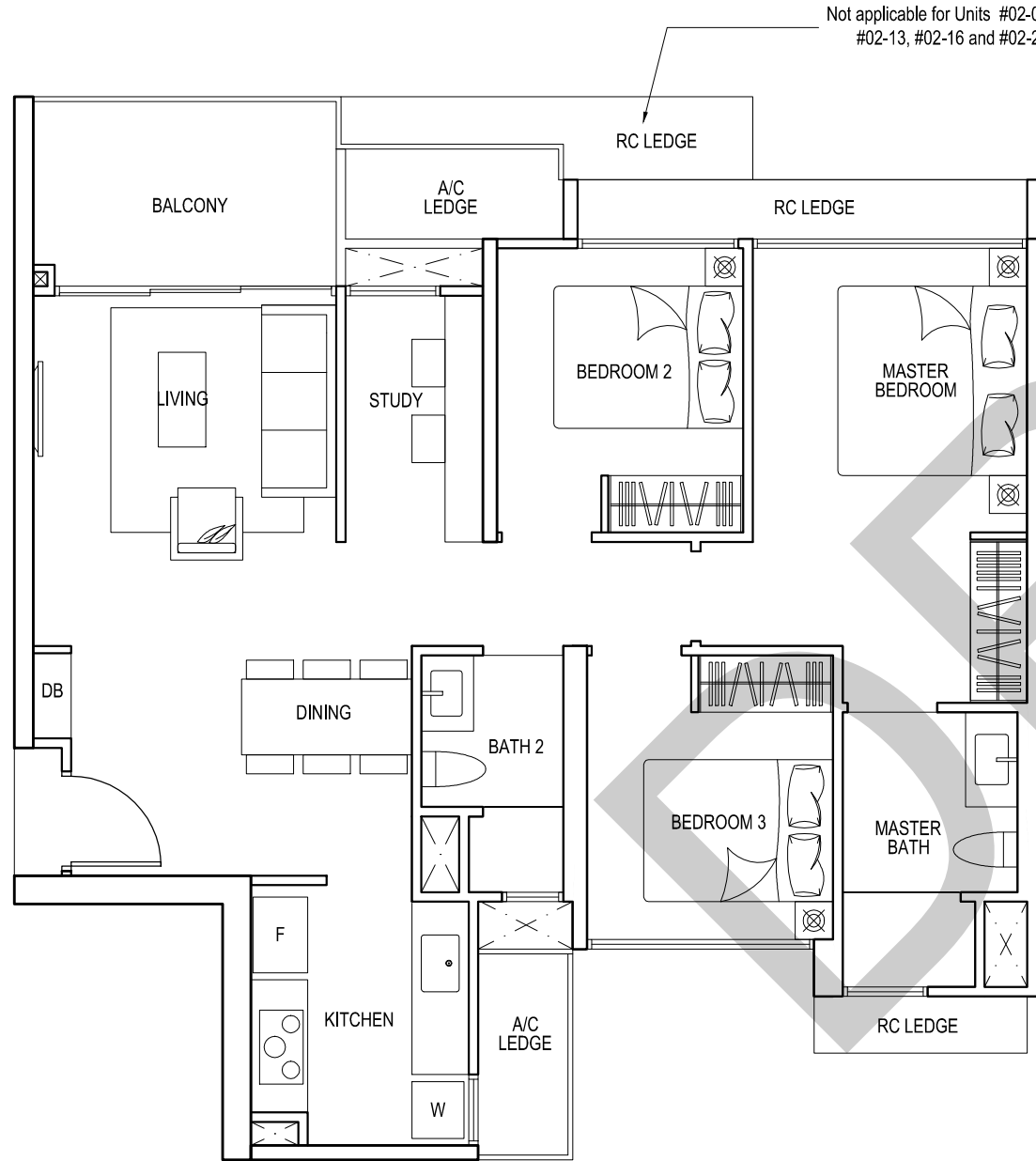
All areas stated herein include PES (private enclosed space), balcony, A/C Ledge and void where applicable. All areas and measurements stated herein are approximate and subject to adjustment on final survey. Layout / location of fan coil units, DB, electrical points, door swing directions and plaster ceiling boards are subject to Developer's sole discretion and final design. Please refer to the key plan for orientation.



**TYPE C3
3 - BEDROOM SUPERIOR**

STRATA SFA: 92 sq.m. / 990 sq.ft.

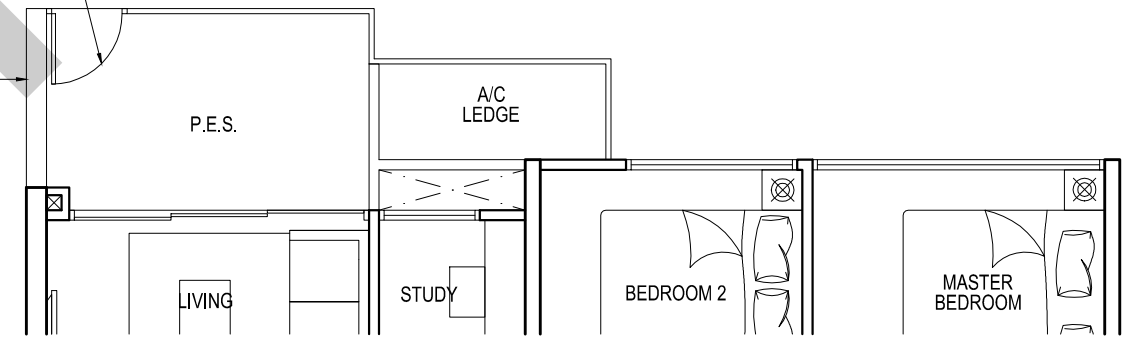
UNIT	MIRRORED		
#03-16	#03-24	#03-09	#03-13
#05-16	#05-24	#05-09	#05-13
#07-16	#07-24	#07-09	#07-13
#09-16	#09-24	#09-09	#09-13
#11-16	#11-24	#11-09	#11-13
#13-16	#13-24	#13-09	#13-13



**TYPE C3
3 - BEDROOM SUPERIOR**

STRATA SFA: 92 sq.m. / 990 sq.ft.

UNIT	MIRRORED		
#02-16	#02-24	#02-09	#02-13
#04-16	#04-24	#04-09	#04-13
#06-16	#06-24	#06-09	#06-13
#08-16	#08-24	#08-09	#08-13
#10-16	#10-24	#10-09	#10-13
#12-16	#12-24	#12-09	#12-13
#14-16	#14-24	#14-09	#14-13



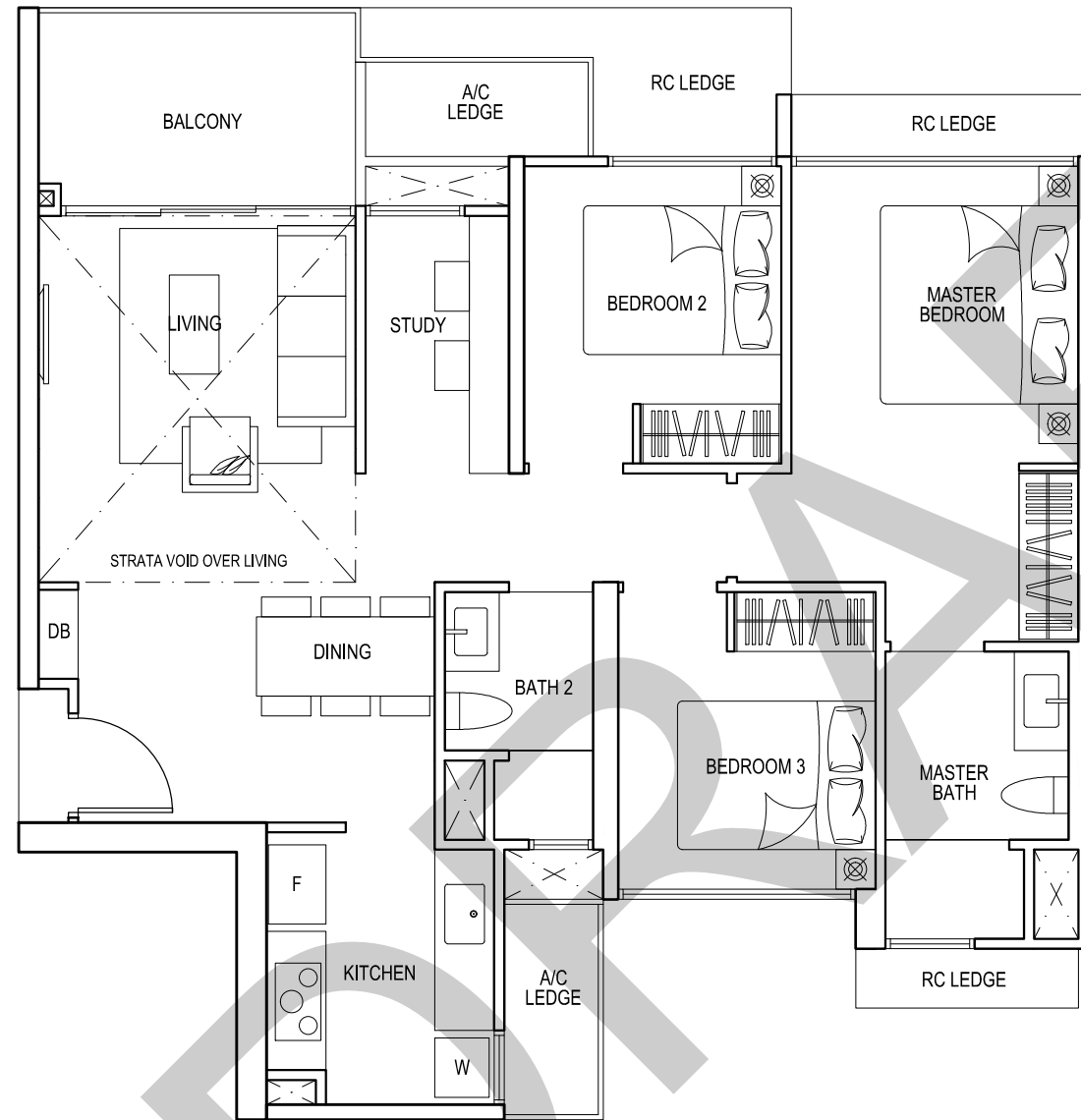
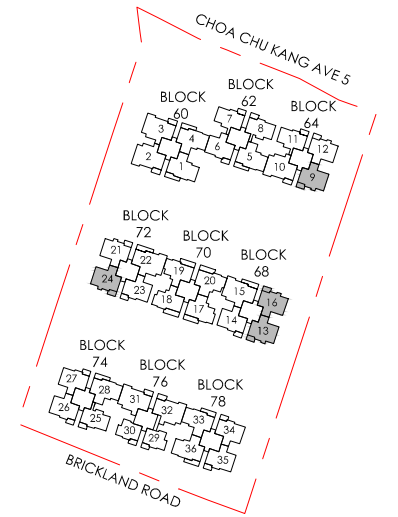
**TYPE C3p
3 - BEDROOM SUPERIOR**

STRATA SFA: 92 sq.m. / 990 sq.ft.

UNIT	MIRRORED
#01-16	#01-09
#01-24	#01-13



All areas stated herein include PES (private enclosed space), balcony, A/C Ledge and void where applicable. All areas and measurements stated herein are approximate and subject to adjustment on final survey. Layout / location of fan coil units, DB, electrical points, door swing directions and plaster ceiling boards are subject to Developer's sole discretion and final design. Please refer to the key plan for orientation.



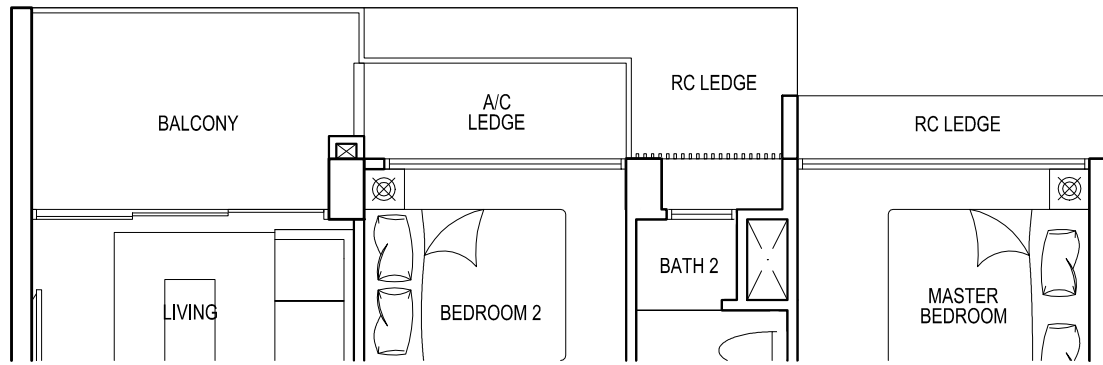
TYPE C3L
3 - BEDROOM SUPERIOR

STRATA SFA: 105 sq.m. / 1130 sq.ft.

UNIT MIRRORED
 #15-16 #15-09
 #15-24 #15-13



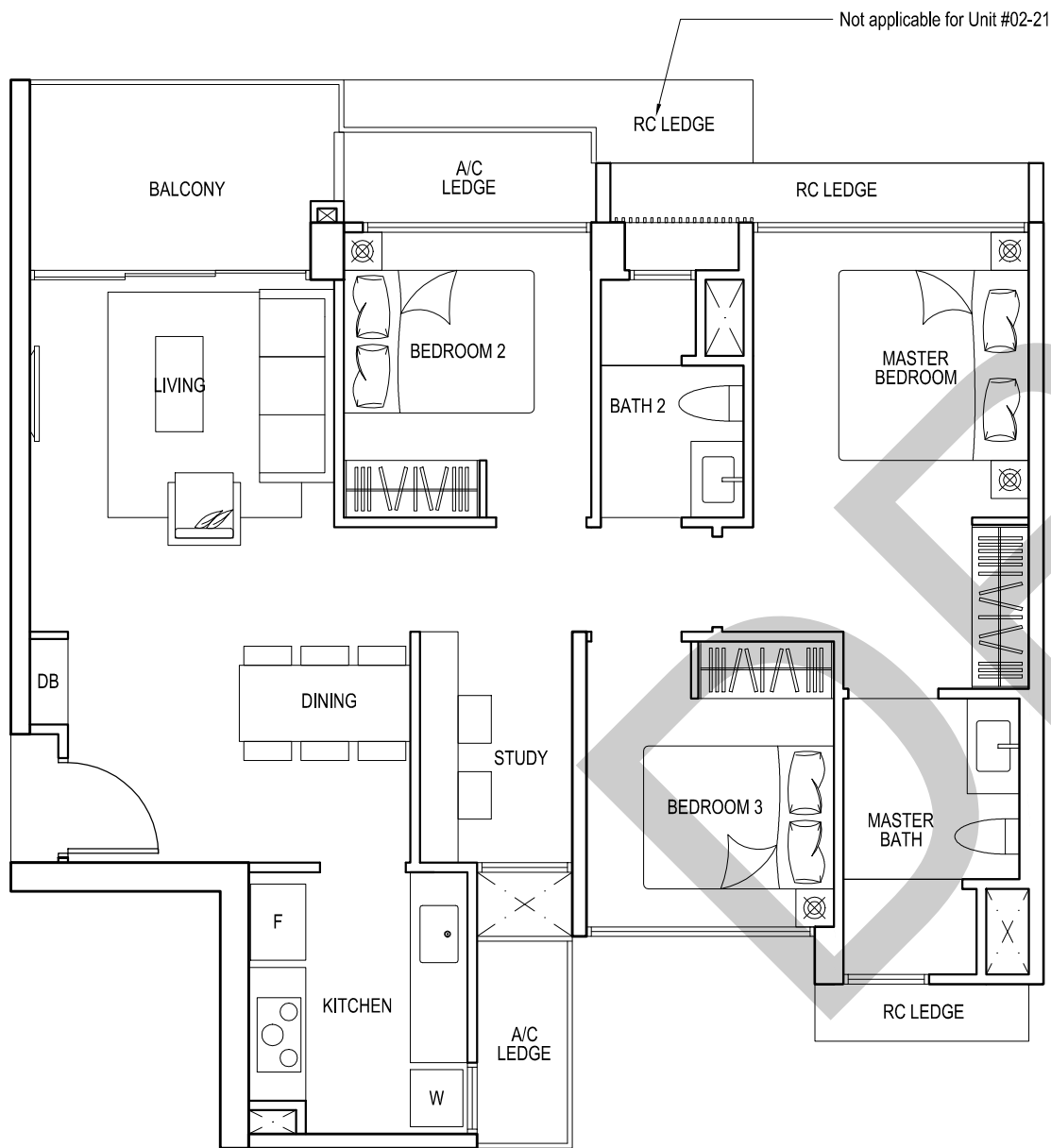
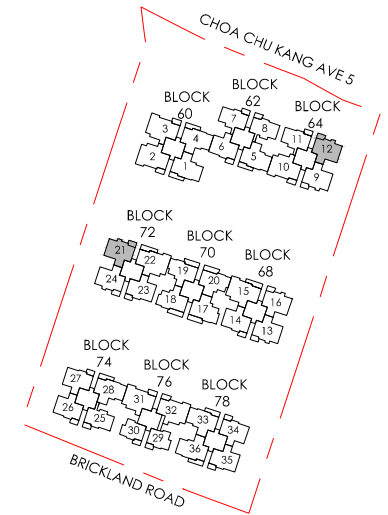
All areas stated herein include PES (private enclosed space), balcony, A/C Ledge and void where applicable. All areas and measurements stated herein are approximate and subject to adjustment on final survey. Layout / location of fan coil units, DB, electrical points, door swing directions and plaster ceiling boards are subject to Developer's sole discretion and final design. Please refer to the key plan for orientation.



TYPE C4 3 - BEDROOM SUPERIOR

STRATA SFA: 92 sq.m. / 990 sq.ft.

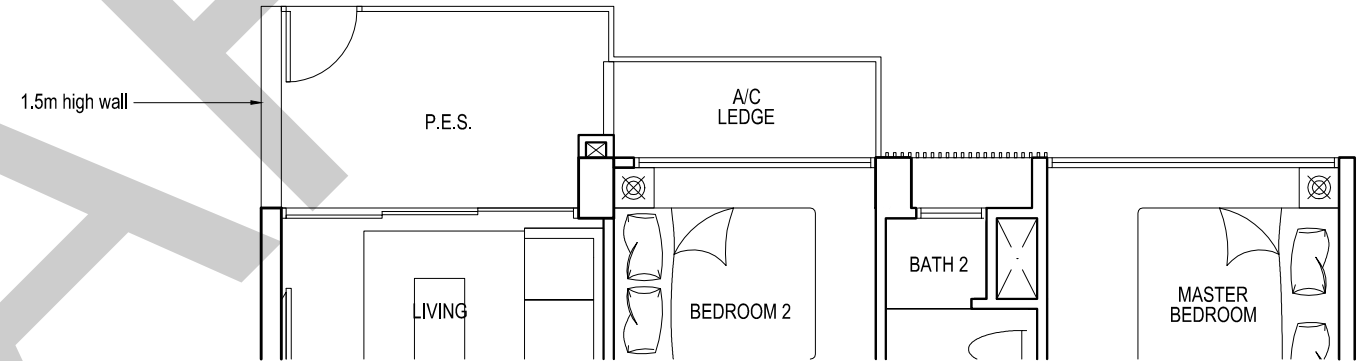
UNIT	MIRRORED
#03-12	#03-21
#05-12	#05-21
#07-12	#07-21
#09-12	#09-21
#11-12	#11-21
#13-12	#13-21



TYPE C4 3 - BEDROOM SUPERIOR

STRATA SFA: 92 sq.m. / 990 sq.ft.

UNIT	MIRRORED
#02-12	#02-21
#04-12	#04-21
#06-12	#06-21
#08-12	#08-21
#10-12	#10-21
#12-12	#12-21
#14-12	#14-21



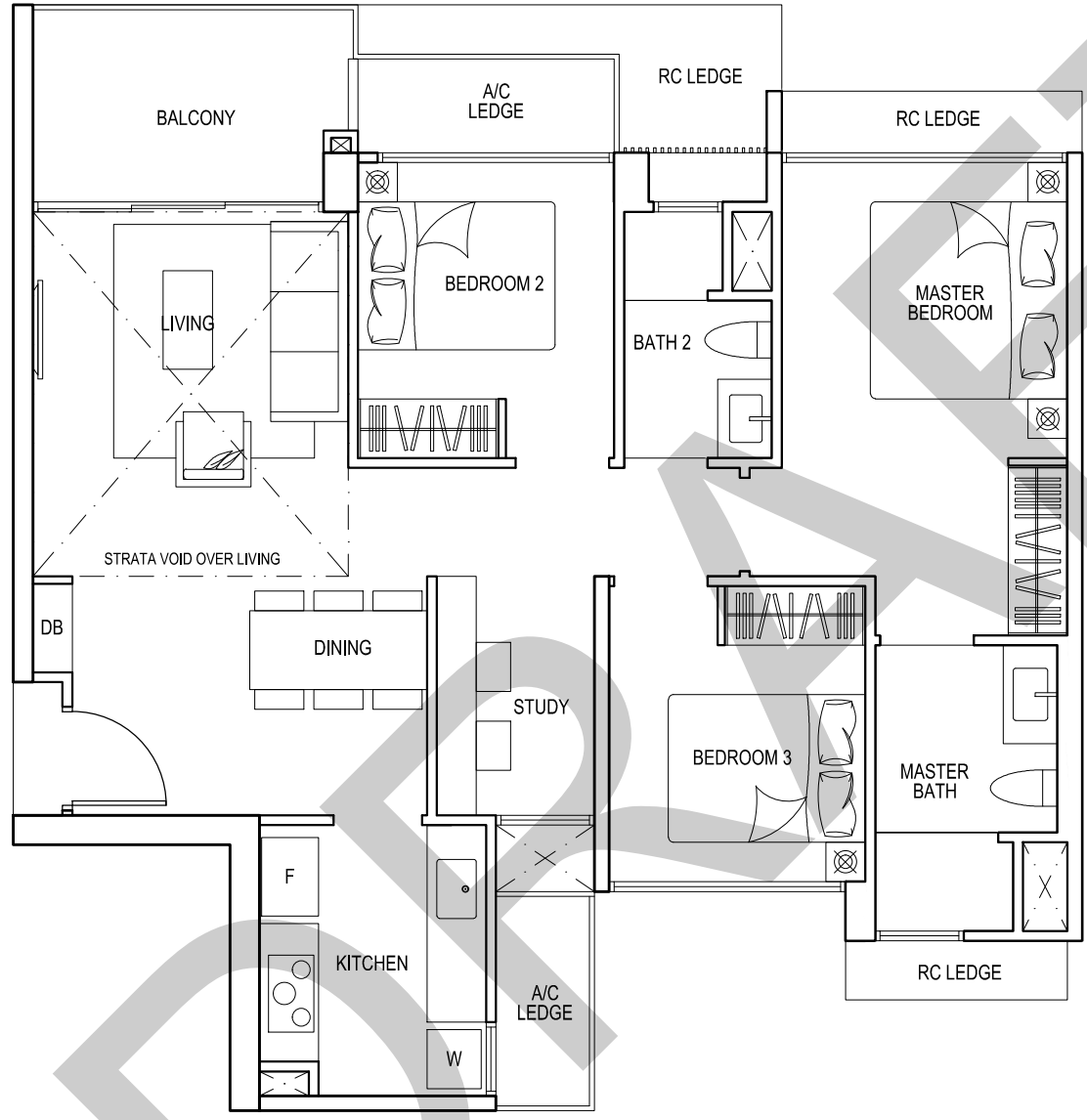
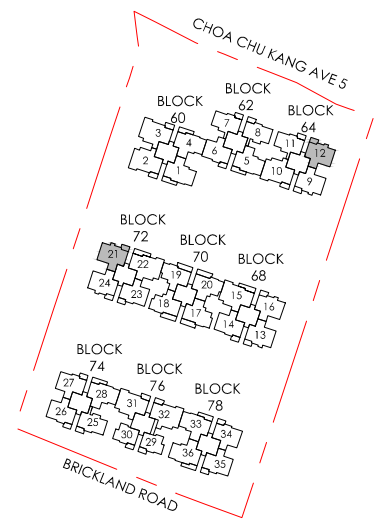
TYPE C4p 3 - BEDROOM SUPERIOR

STRATA SFA: 92 sq.m. / 990 sq.ft.

UNIT	MIRRORED
#01-12	#01-21



All areas stated herein include PES (private enclosed space), balcony, A/C Ledge and void where applicable. All areas and measurements stated herein are approximate and subject to adjustment on final survey. Layout / location of fan coil units, DB, electrical points, door swing directions and plaster ceiling boards are subject to Developer's sole discretion and final design. Please refer to the key plan for orientation.



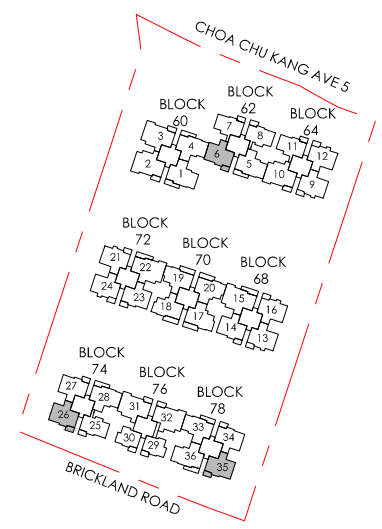
TYPE C4L
3 - BEDROOM SUPERIOR

STRATA SFA: 105 sq.m. / 1130 sq.ft.

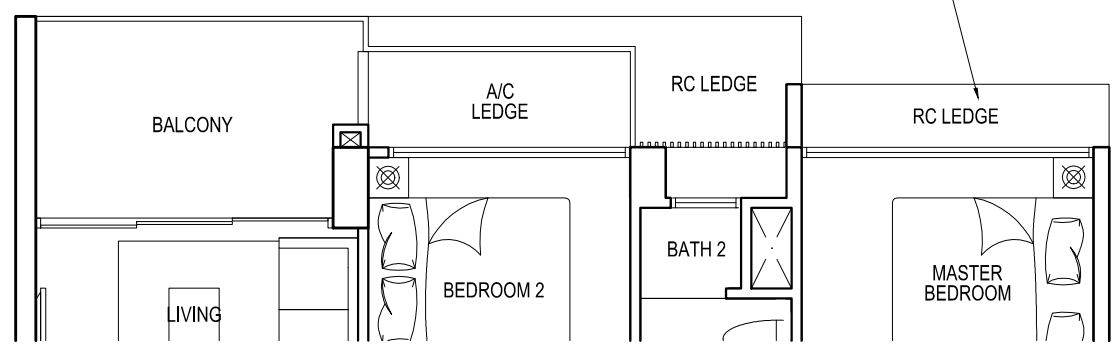
UNIT #15-12 MIRRORED #15-21



All areas stated herein include PES (private enclosed space), balcony, A/C Ledge and void where applicable. All areas and measurements stated herein are approximate and subject to adjustment on final survey. Layout / location of fan coil units, DB, electrical points, door swing directions and plaster ceiling boards are subject to Developer's sole discretion and final design. Please refer to the key plan for orientation.



Not applicable for Units #02-26 and #02-35

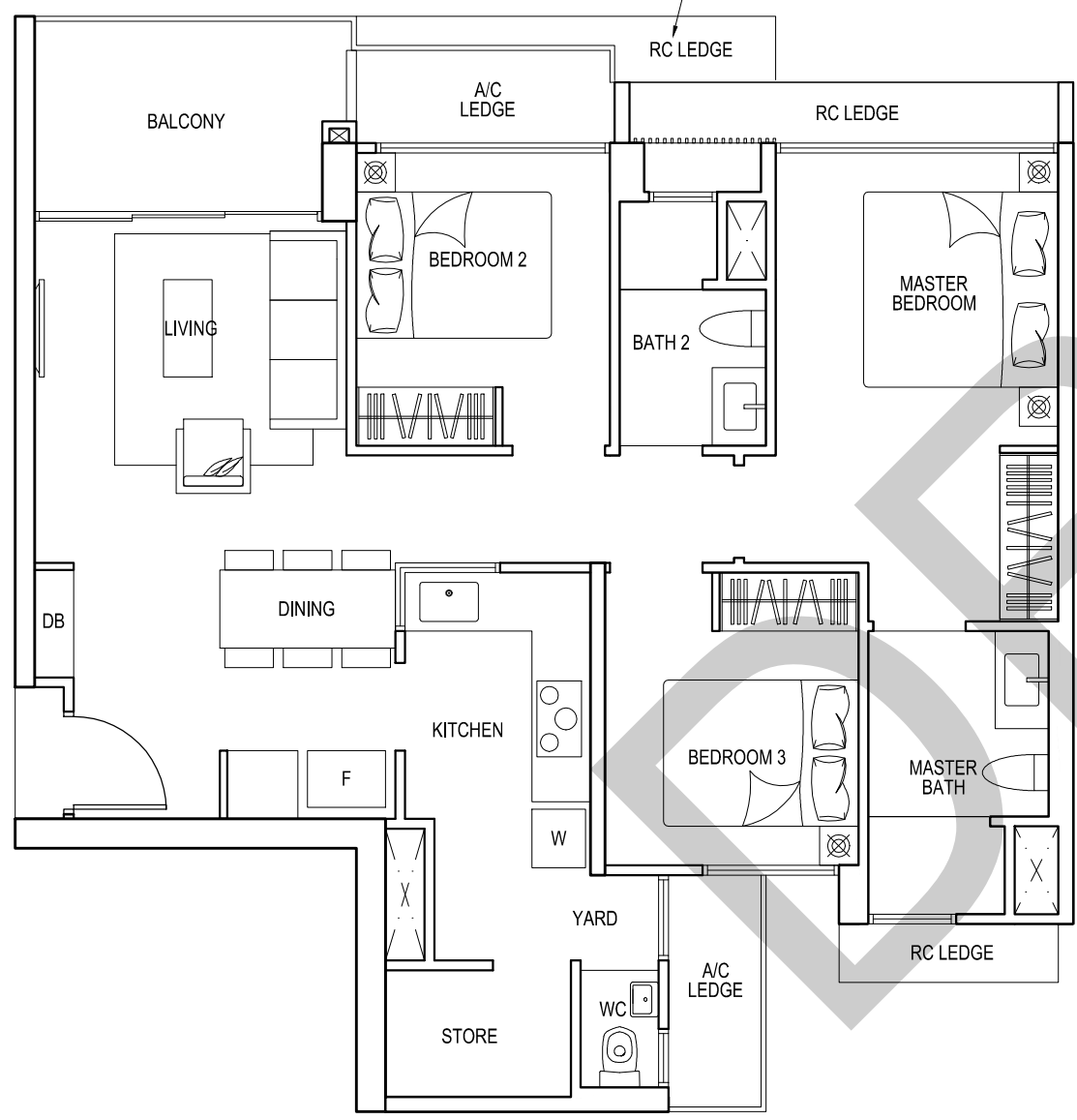


TYPE C5 3 - BEDROOM PREMIUM

STRATA SFA: 94 sq.m. / 1012 sq.ft.

UNIT	MIRRORED
#03-06	#02-26 #02-35
#05-06	#04-26 #04-35
#07-06	#06-26 #06-35
#09-06	#08-26 #08-35
#11-06	#10-26 #10-35
#13-06	#12-26 #12-35
	#14-26 #14-35

Not applicable for Unit #02-06



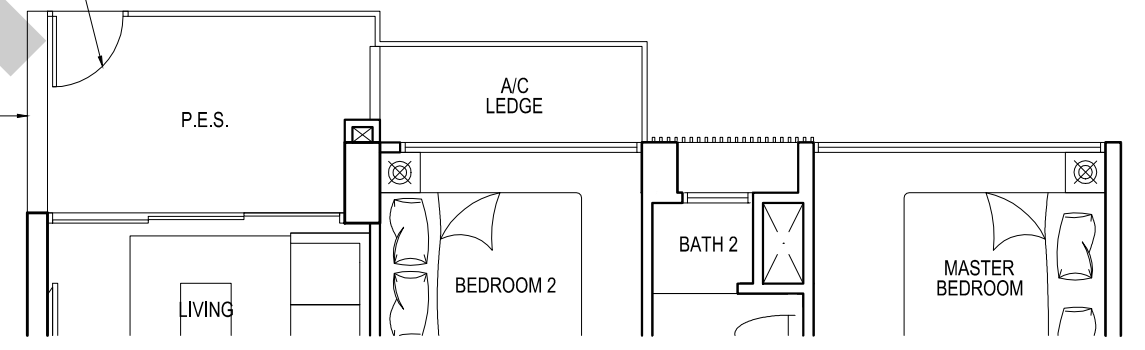
TYPE C5 3 - BEDROOM PREMIUM

STRATA SFA: 94 sq.m. / 1012 sq.ft.

UNIT	MIRRORED
#02-06	#03-26 #03-35
#04-06	#05-26 #05-35
#06-06	#07-26 #07-35
#08-06	#09-26 #09-35
#10-06	#11-26 #11-35
#12-06	#13-26 #13-35
#14-06	#15-26 #15-35

No gate to Units #01-26 and #01-35

1.5m high wall



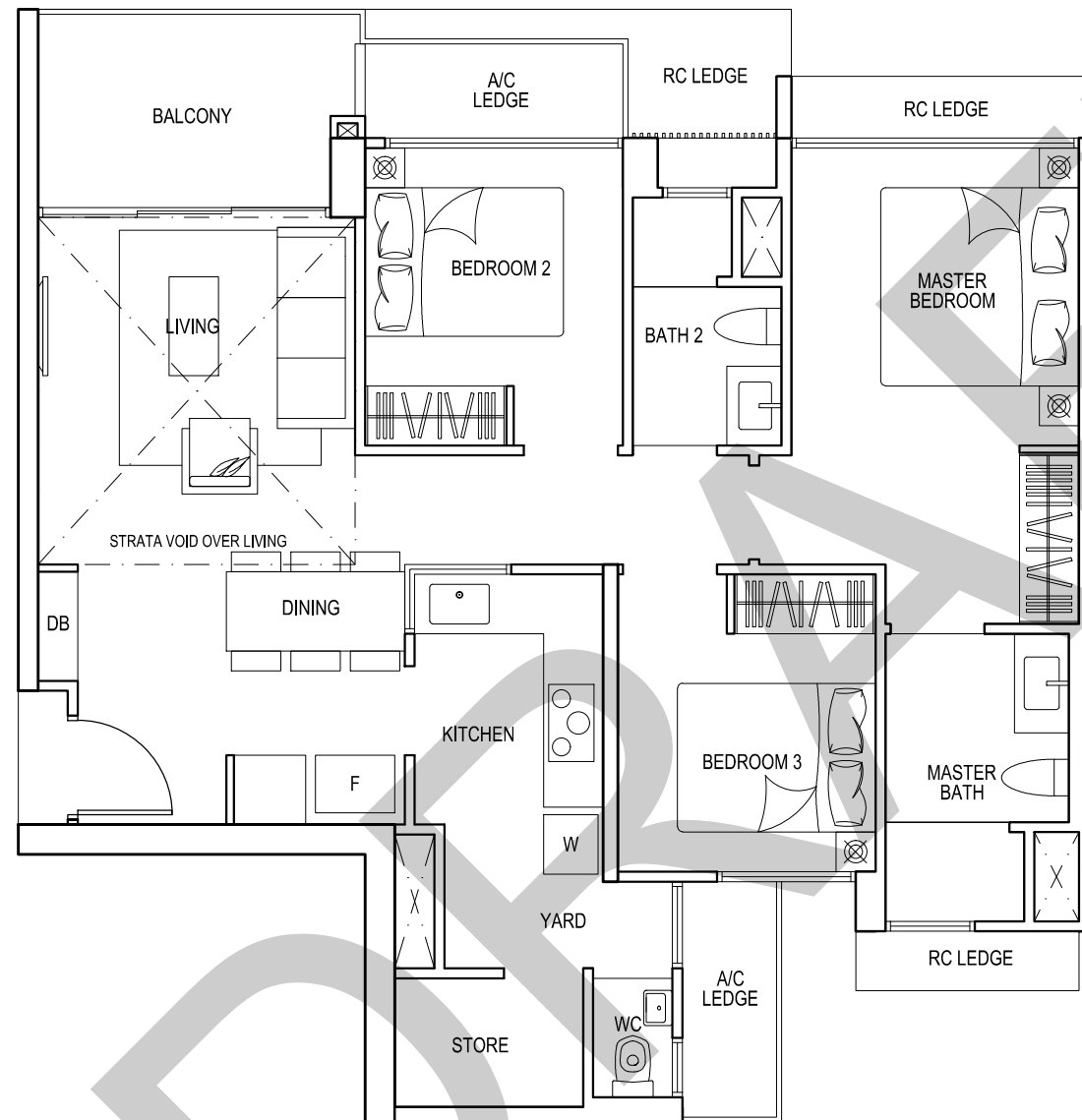
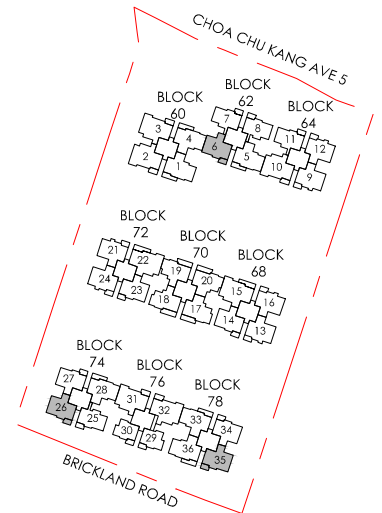
TYPE C5p 3 - BEDROOM PREMIUM

STRATA SFA: 94 sq.m. / 1012 sq.ft.

UNIT	MIRRORED
#01-06	#01-35
#01-26	



All areas stated herein include PES (private enclosed space), balcony, A/C Ledge and void where applicable. All areas and measurements stated herein are approximate and subject to adjustment on final survey. Layout / location of fan coil units, DB, electrical points, door swing directions and plaster ceiling boards are subject to Developer's sole discretion and final design. Please refer to the key plan for orientation.



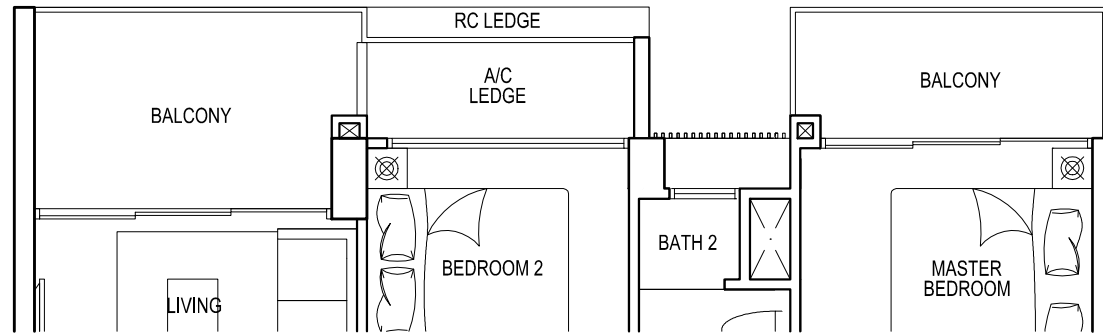
TYPE C5L
3 - BEDROOM PREMIUM

STRATA SFA: 106 sq.m. / 1141 sq.ft.

UNIT MIRRORED
 #15-06 #16-35
 #16-26



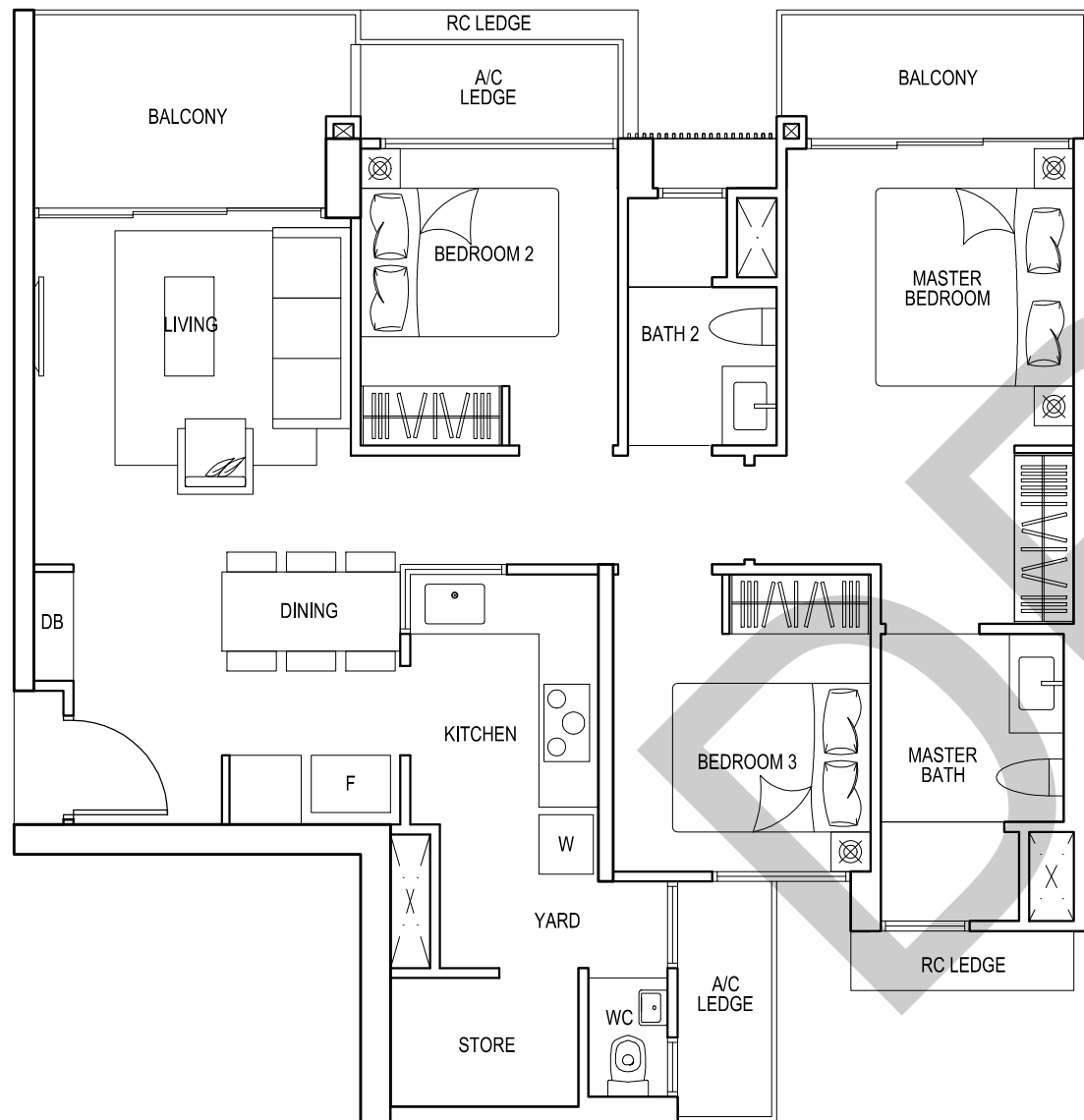
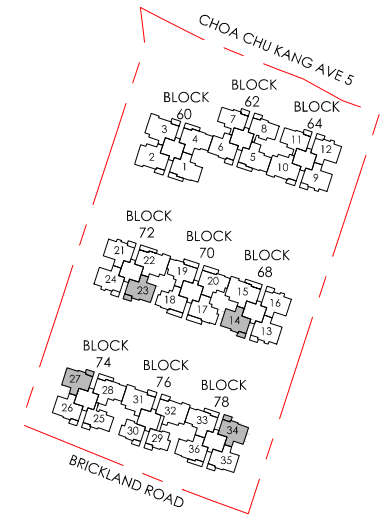
All areas stated herein include PES (private enclosed space), balcony, A/C Ledge and void where applicable. All areas and measurements stated herein are approximate and subject to adjustment on final survey. Layout / location of fan coil units, DB, electrical points, door swing directions and plaster ceiling boards are subject to Developer's sole discretion and final design. Please refer to the key plan for orientation.



TYPE C5a 3 - BEDROOM PREMIUM

STRATA SFA: 97 sq.m. / 1044 sq.ft.

UNIT	MIRRORED		
#03-14	#02-34	#03-23	#02-27
#05-14	#04-34	#05-23	#04-27
#07-14	#06-34	#07-23	#06-27
#09-14	#08-34	#09-23	#08-27
#11-14	#10-34	#11-23	#10-27
#13-14	#12-34	#13-23	#12-27
	#14-34		#14-27



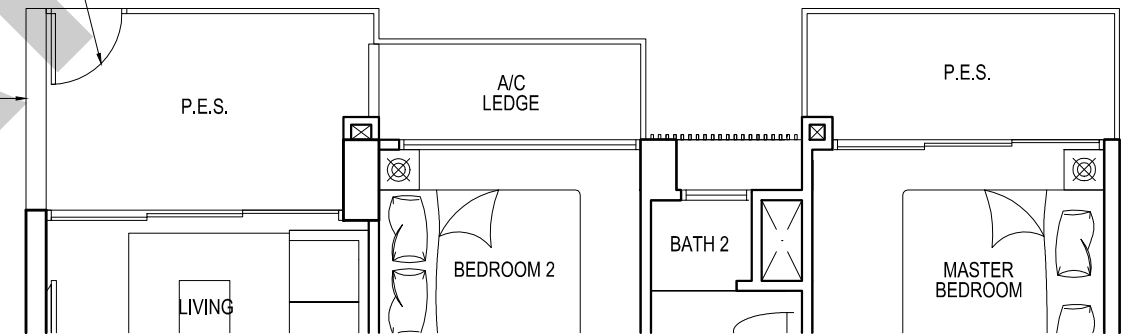
TYPE C5a 3 - BEDROOM PREMIUM

STRATA SFA: 97 sq.m. / 1044 sq.ft.

UNIT	MIRRORED		
#04-14	#03-34	#02-23	#03-27
#06-14	#05-34	#04-23	#05-27
#08-14	#07-34	#06-23	#07-27
#10-14	#09-34	#08-23	#09-27
#12-14	#11-34	#10-23	#11-27
#14-14	#13-34	#12-23	#13-27
	#15-34	#14-23	#15-27

No gate to Units #01-26 and #01-35

1.5m high wall



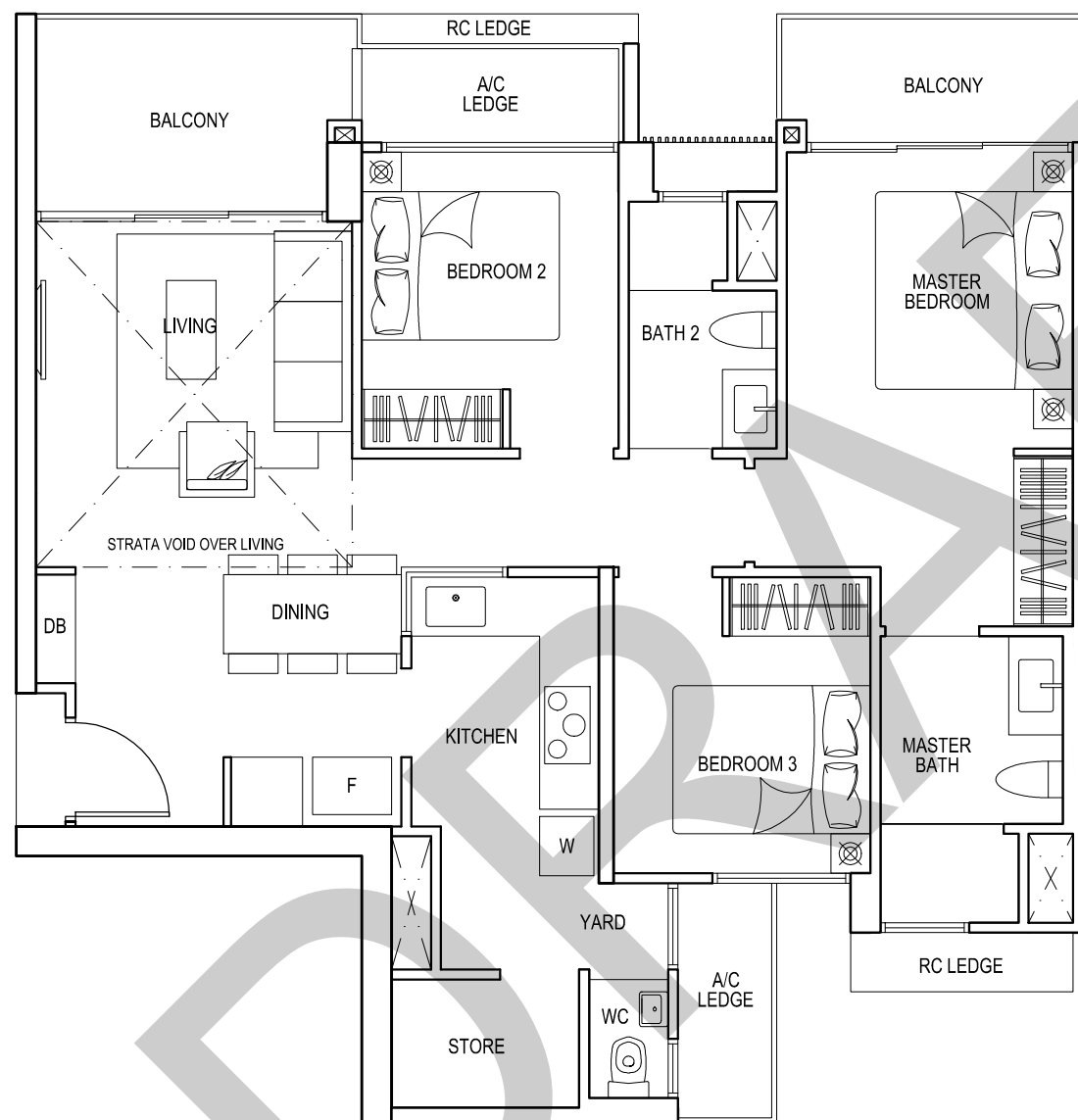
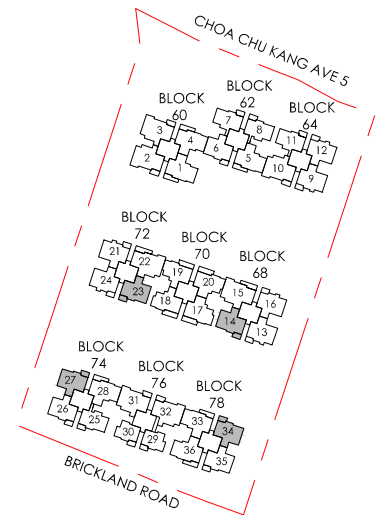
TYPE C5ap 3 - BEDROOM PREMIUM

STRATA SFA: 97 sq.m. / 1044 sq.ft.

UNIT	MIRRORED
#01-34	#01-23
	#01-27



All areas stated herein include PES (private enclosed space), balcony, A/C Ledge and void where applicable. All areas and measurements stated herein are approximate and subject to adjustment on final survey. Layout / location of fan coil units, DB, electrical points, door swing directions and plaster ceiling boards are subject to Developer's sole discretion and final design. Please refer to the key plan for orientation.



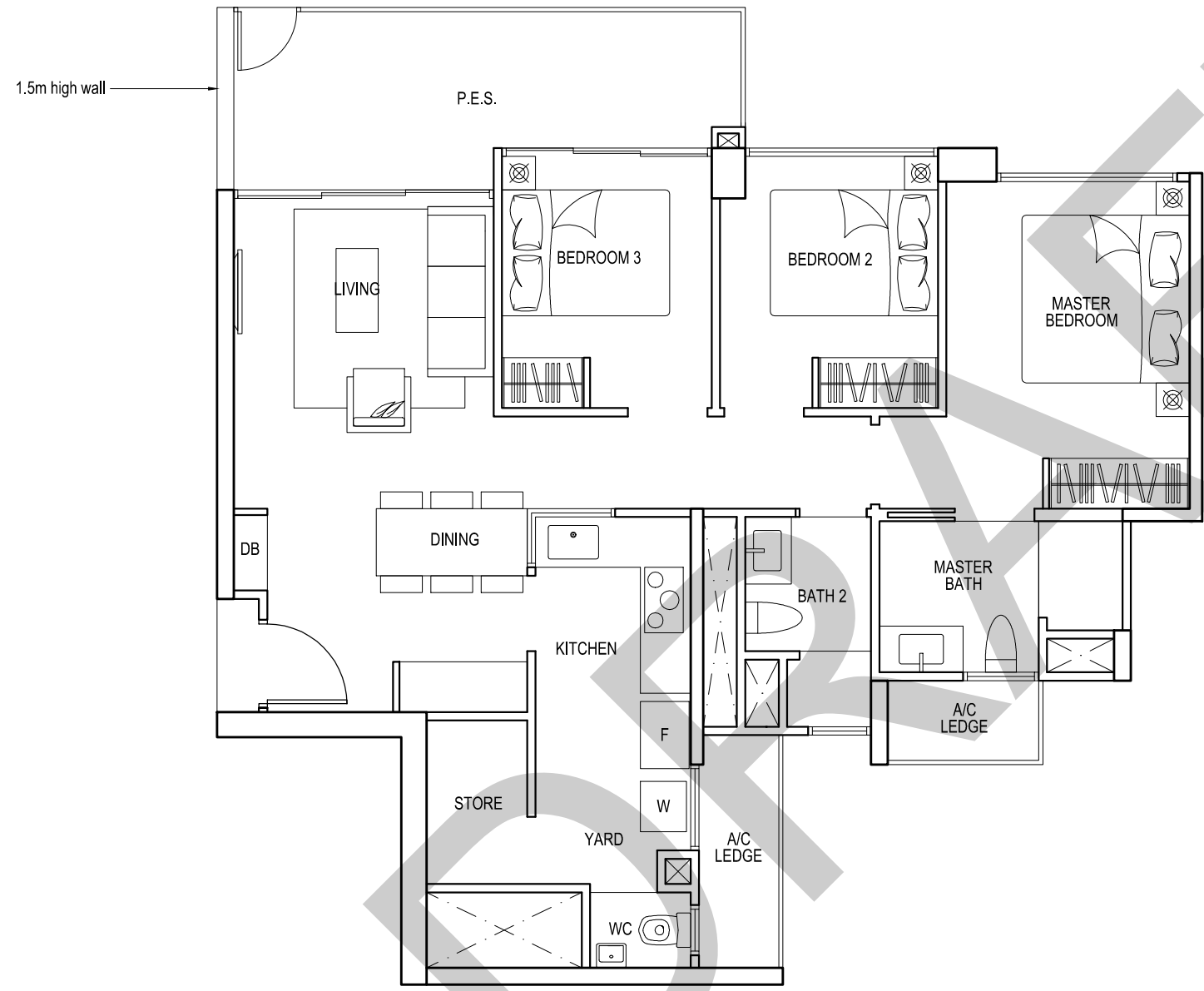
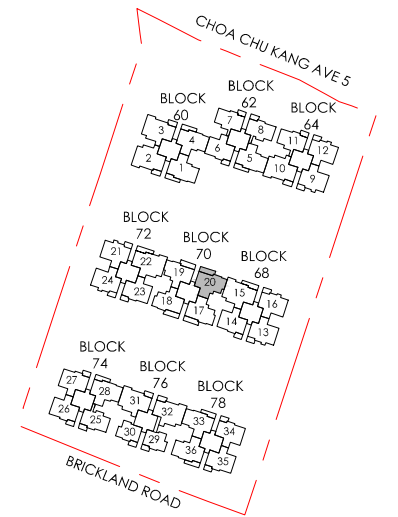
TYPE C5aL
3 - BEDROOM PREMIUM

STRATA SFA: 109 sq.m. / 1173 sq.ft.

UNIT MIRRORED
 #15-14 #15-23
 #16-34 #16-27



All areas stated herein include PES (private enclosed space), balcony, A/C Ledge and void where applicable. All areas and measurements stated herein are approximate and subject to adjustment on final survey. Layout / location of fan coil units, DB, electrical points, door swing directions and plaster ceiling boards are subject to Developer's sole discretion and final design. Please refer to the key plan for orientation.



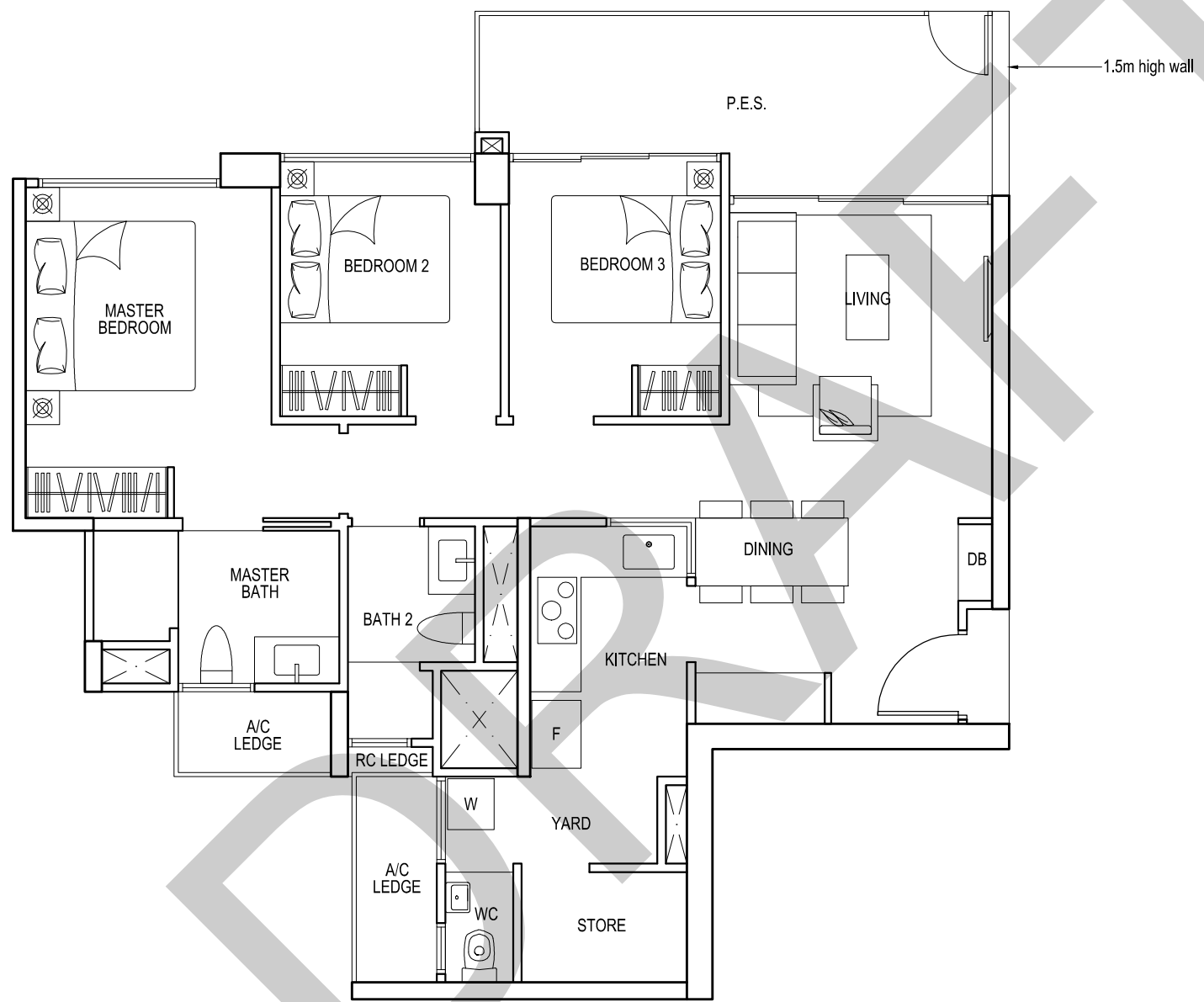
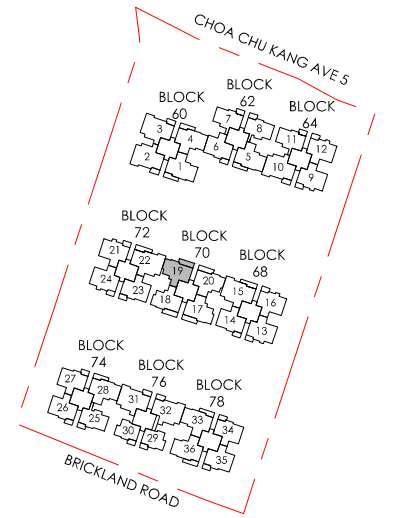
TYPE C6p
3 - BEDROOM PREMIUM

STRATA SFA: 96 sq.m. / 1033 sq.ft.

UNIT
 #01-20



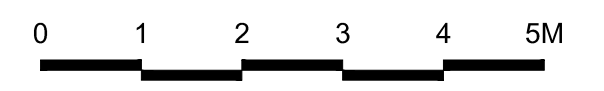
All areas stated herein include PES (private enclosed space), balcony, A/C Ledge and void where applicable. All areas and measurements stated herein are approximate and subject to adjustment on final survey. Layout / location of fan coil units, DB, electrical points, door swing directions and plaster ceiling boards are subject to Developer's sole discretion and final design. Please refer to the key plan for orientation.



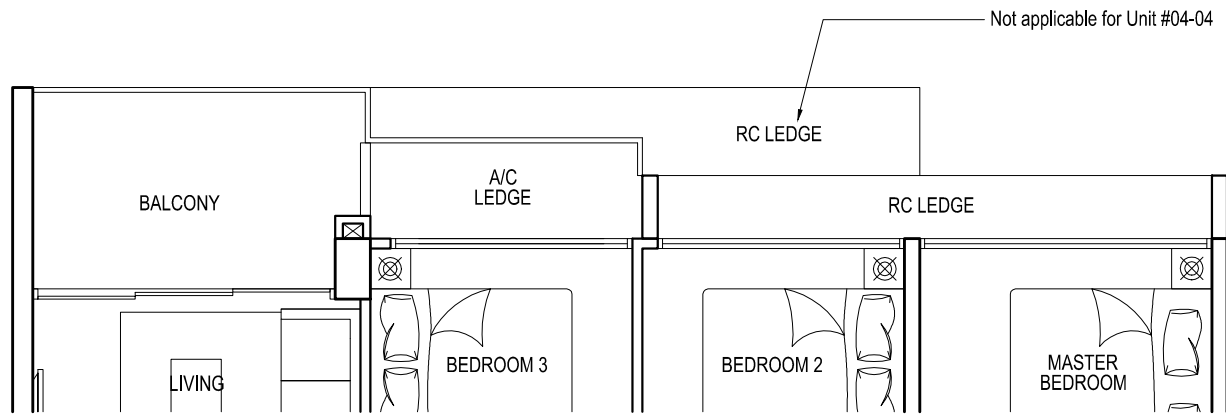
TYPE C7p
3 - BEDROOM PREMIUM

STRATA SFA: 96 sq.m. / 1033 sq.ft.

UNIT
 #01-19



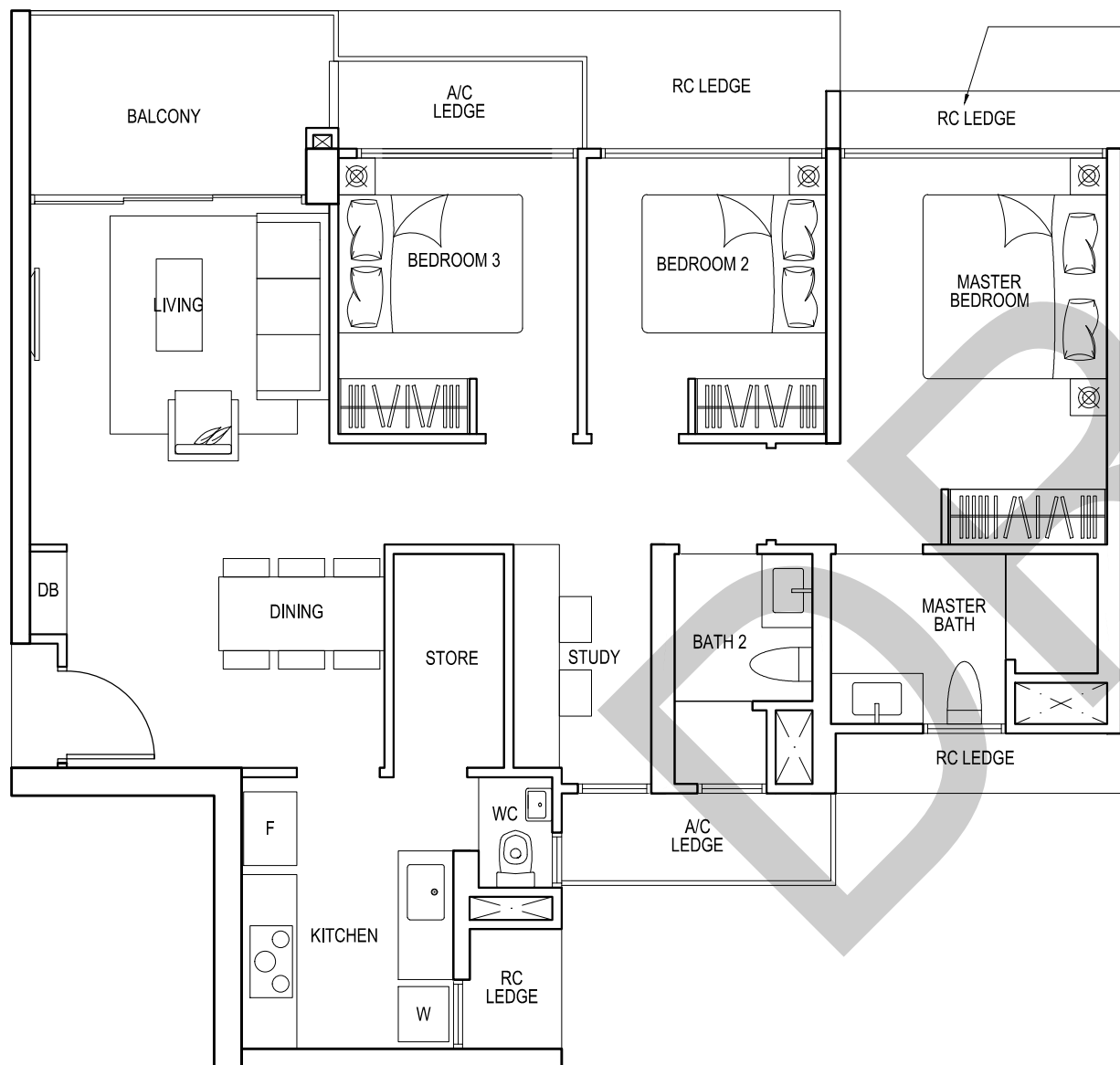
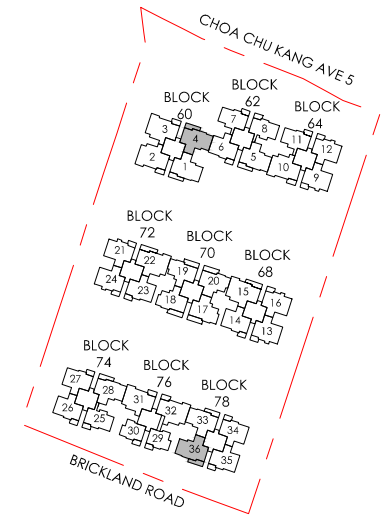
All areas stated herein include PES (private enclosed space), balcony, A/C Ledge and void where applicable. All areas and measurements stated herein are approximate and subject to adjustment on final survey. Layout / location of fan coil units, DB, electrical points, door swing directions and plaster ceiling boards are subject to Developer's sole discretion and final design. Please refer to the key plan for orientation.



TYPE CS3a 3 - BEDROOM COSPACE

STRATA SFA: 99 sq.m. / 1066 sq.ft.

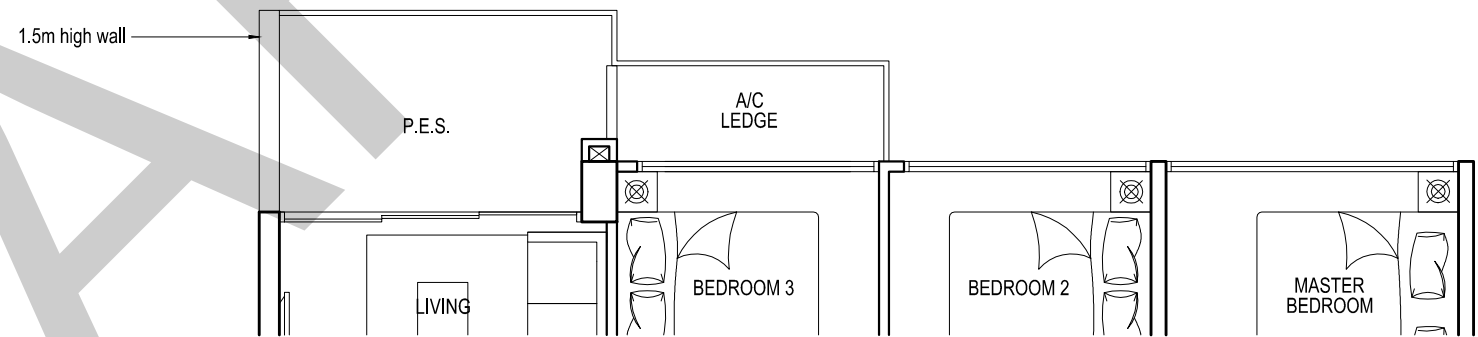
UNIT	
#04-04	#03-36
#06-04	#05-36
#08-04	#07-36
#10-04	#09-36
#12-04	#11-36
#14-04	#13-36
	#15-36



TYPE CS3a 3 - BEDROOM COSPACE

STRATA SFA: 99 sq.m. / 1066 sq.ft.

UNIT	
#05-04	#02-36
#07-04	#04-36
#09-04	#06-36
#11-04	#08-36
#13-04	#10-36
	#12-36
	#14-36



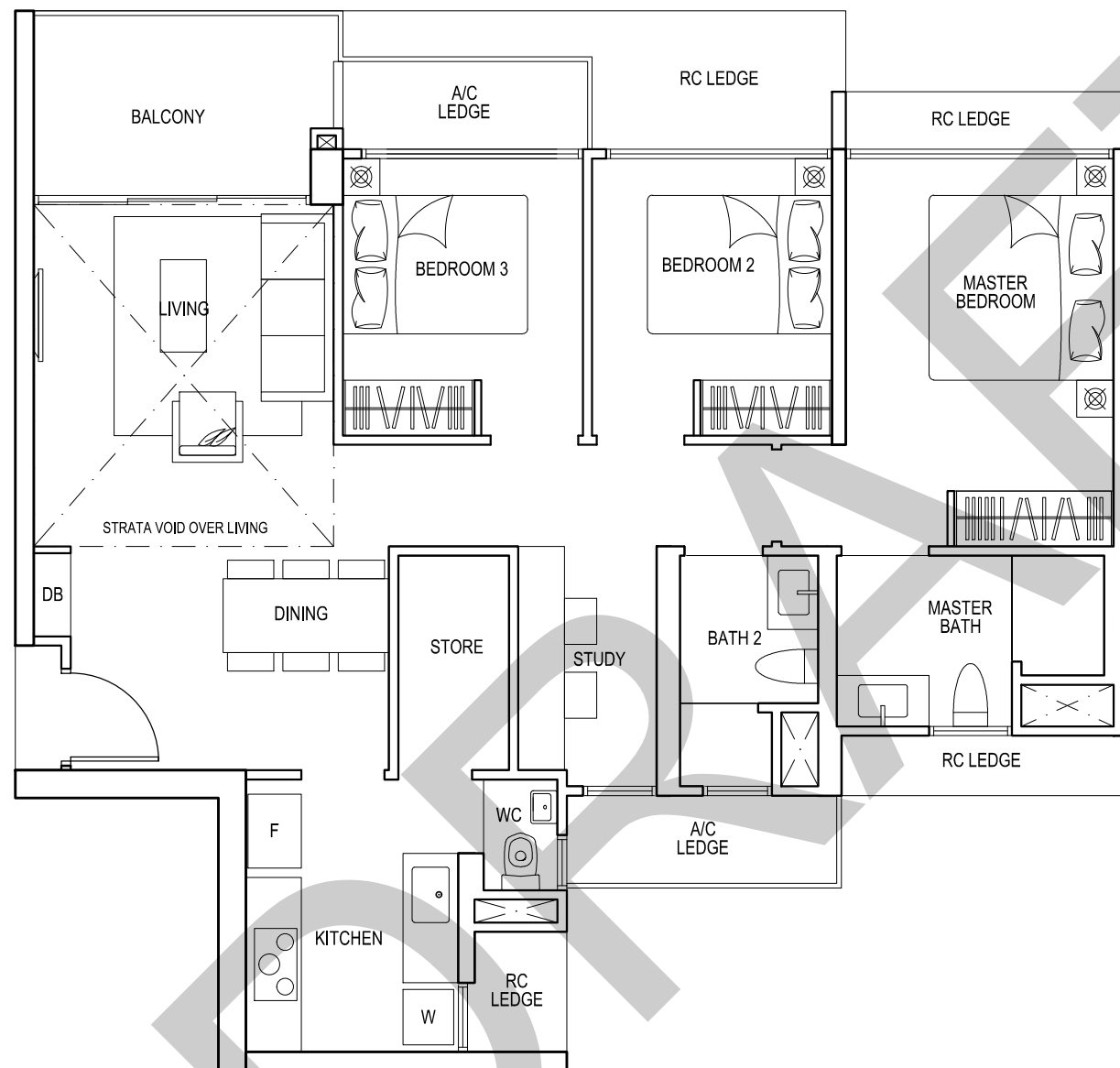
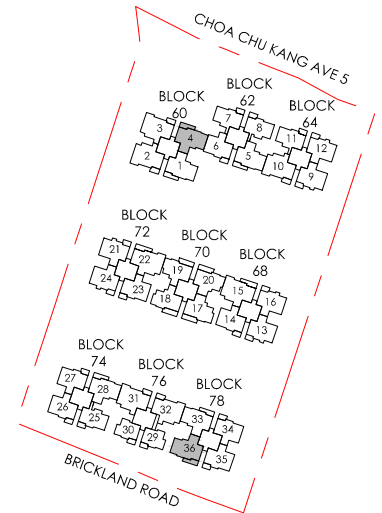
TYPE CS3ap 3 - BEDROOM COSPACE

STRATA SFA: 99 sq.m. / 1066 sq.ft.

UNIT
#01-36



All areas stated herein include PES (private enclosed space), balcony, A/C Ledge and void where applicable. All areas and measurements stated herein are approximate and subject to adjustment on final survey. Layout / location of fan coil units, DB, electrical points, door swing directions and plaster ceiling boards are subject to Developer's sole discretion and final design. Please refer to the key plan for orientation.



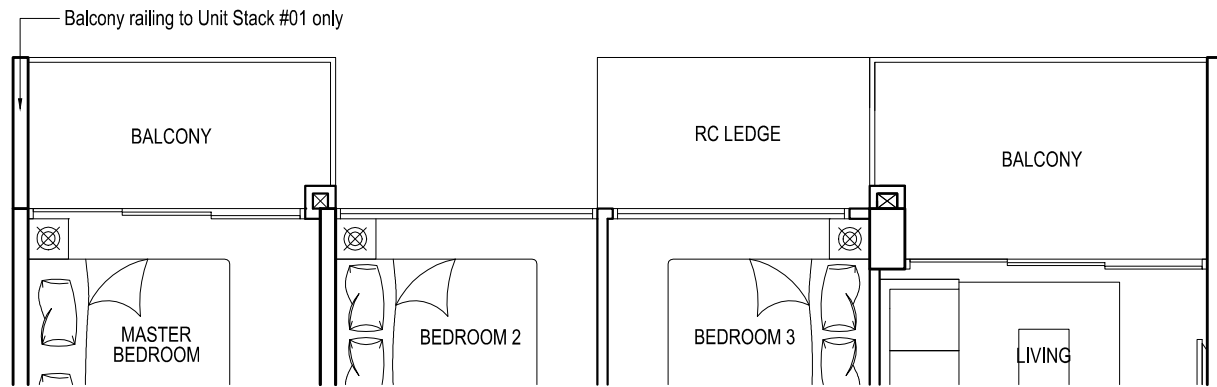
TYPE CS3aL
3 - BEDROOM COSPACE

STRATA SFA: 112 sq.m. / 1206 sq.ft.

UNIT
 #15-04
 #16-36



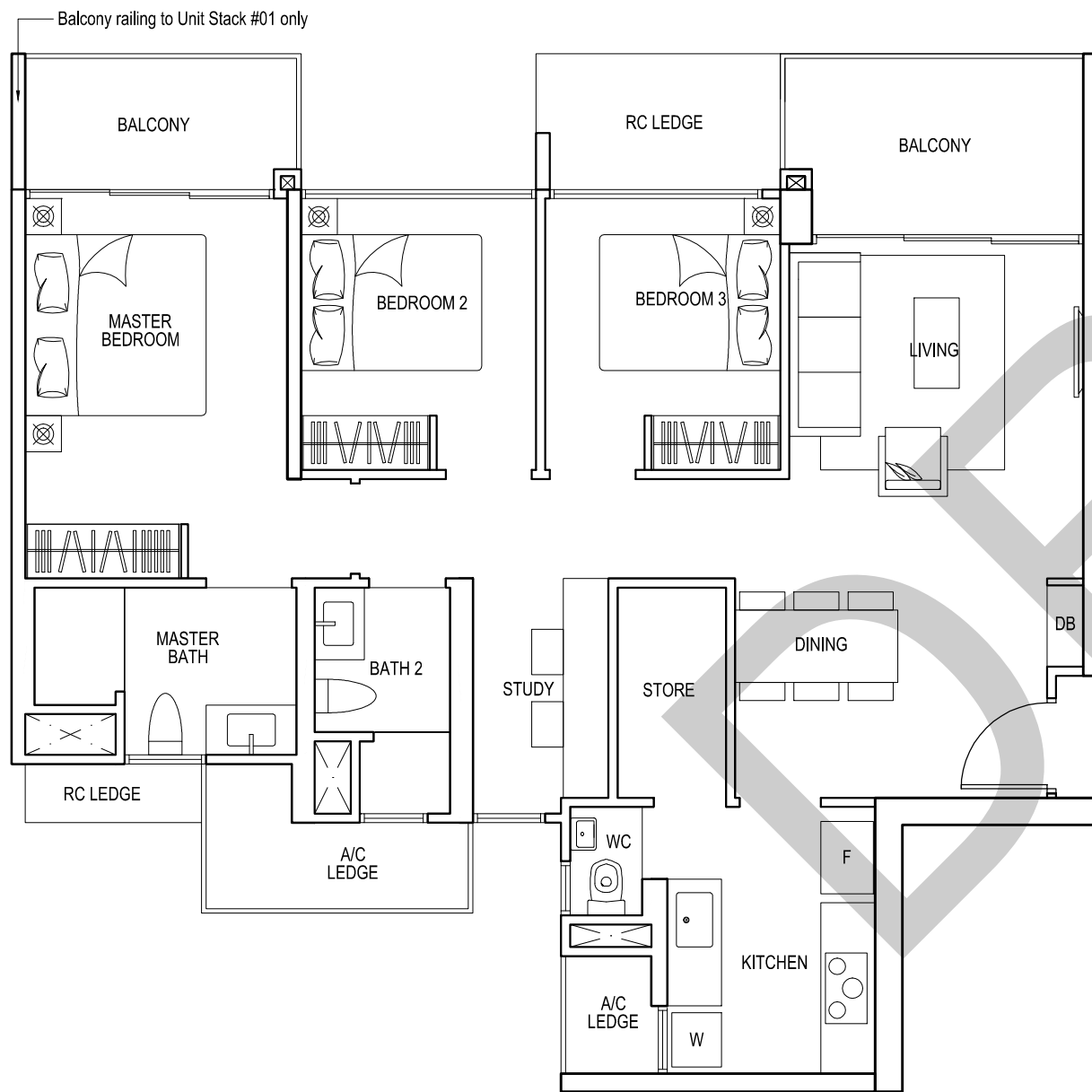
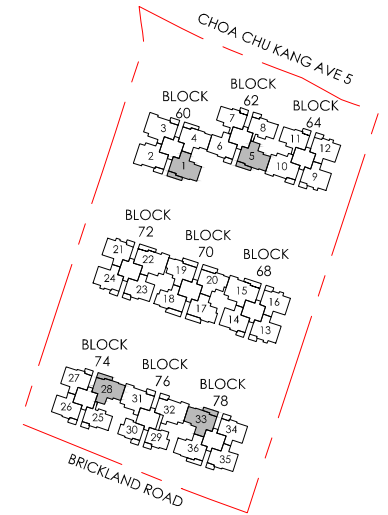
All areas stated herein include PES (private enclosed space), balcony, A/C Ledge and void where applicable. All areas and measurements stated herein are approximate and subject to adjustment on final survey. Layout / location of fan coil units, DB, electrical points, door swing directions and plaster ceiling boards are subject to Developer's sole discretion and final design. Please refer to the key plan for orientation.



TYPE CS3b 3 - BEDROOM COSPACE

STRATA SFA: 103 sq.m. / 1098 sq.ft.

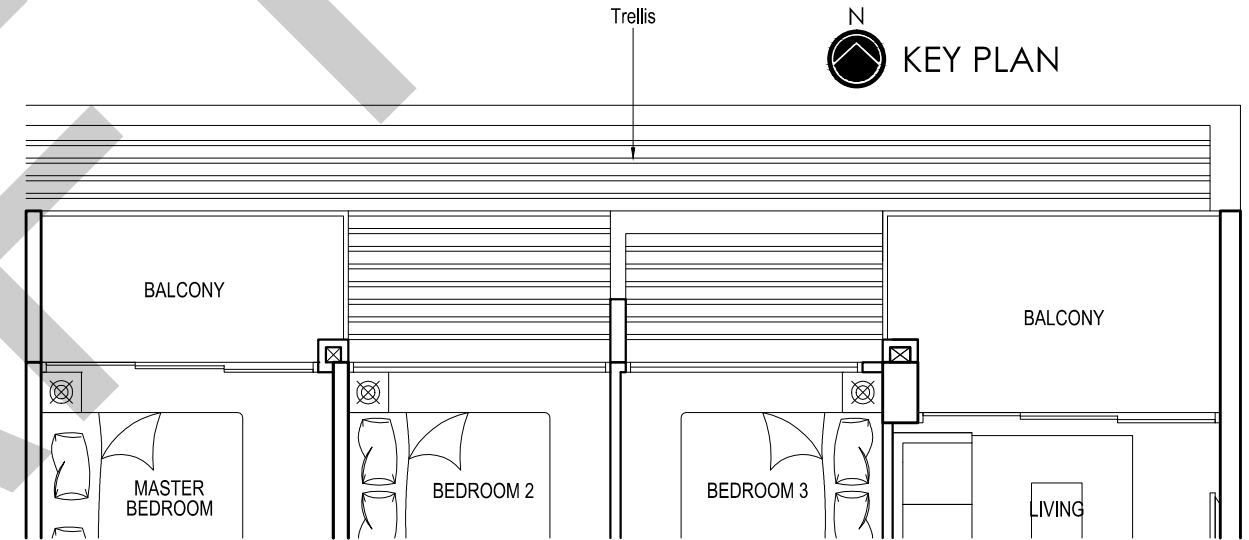
UNIT	MIRRORED		
#02-01	#02-05	#03-33	#03-28
#04-01	#04-05	#05-33	#05-28
#06-01	#06-05	#07-33	#07-28
#08-01	#08-05	#09-33	#09-28
#10-01	#12-05	#11-33	#11-28
#12-01	#14-05	#13-33	#13-28
#14-01		#15-33	#15-28



TYPE CS3b 3 - BEDROOM COSPACE

STRATA SFA: 103 sq.m. / 1098 sq.ft.

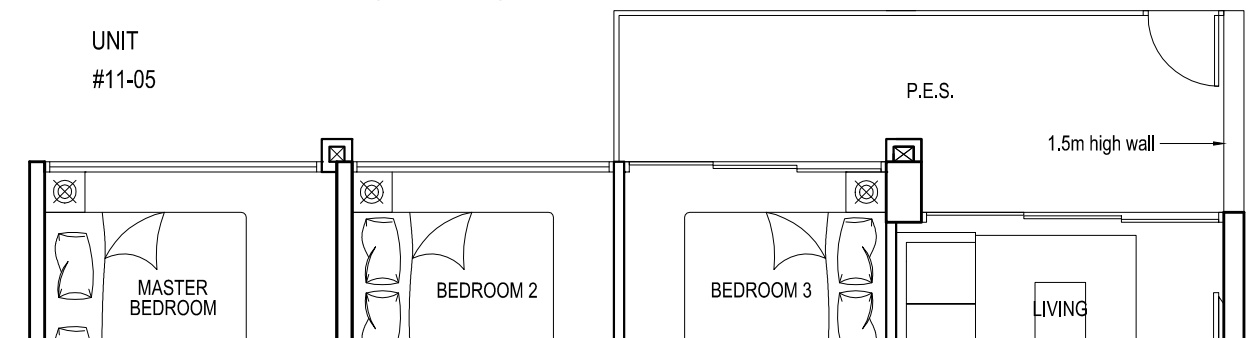
UNIT	MIRRORED		
#03-01	#03-05	#02-33	#02-28
#05-01	#05-05	#04-33	#04-28
#07-01	#07-05	#06-33	#06-28
#09-01	#13-05	#08-33	#08-28
#11-01		#10-33	#10-28
#13-01		#12-33	#12-28
		#14-33	#14-28



TYPE CS3b 3 - BEDROOM COSPACE

STRATA SFA: 102 sq.m. / 1098 sq.ft.

UNIT	MIRRORED
#11-05	



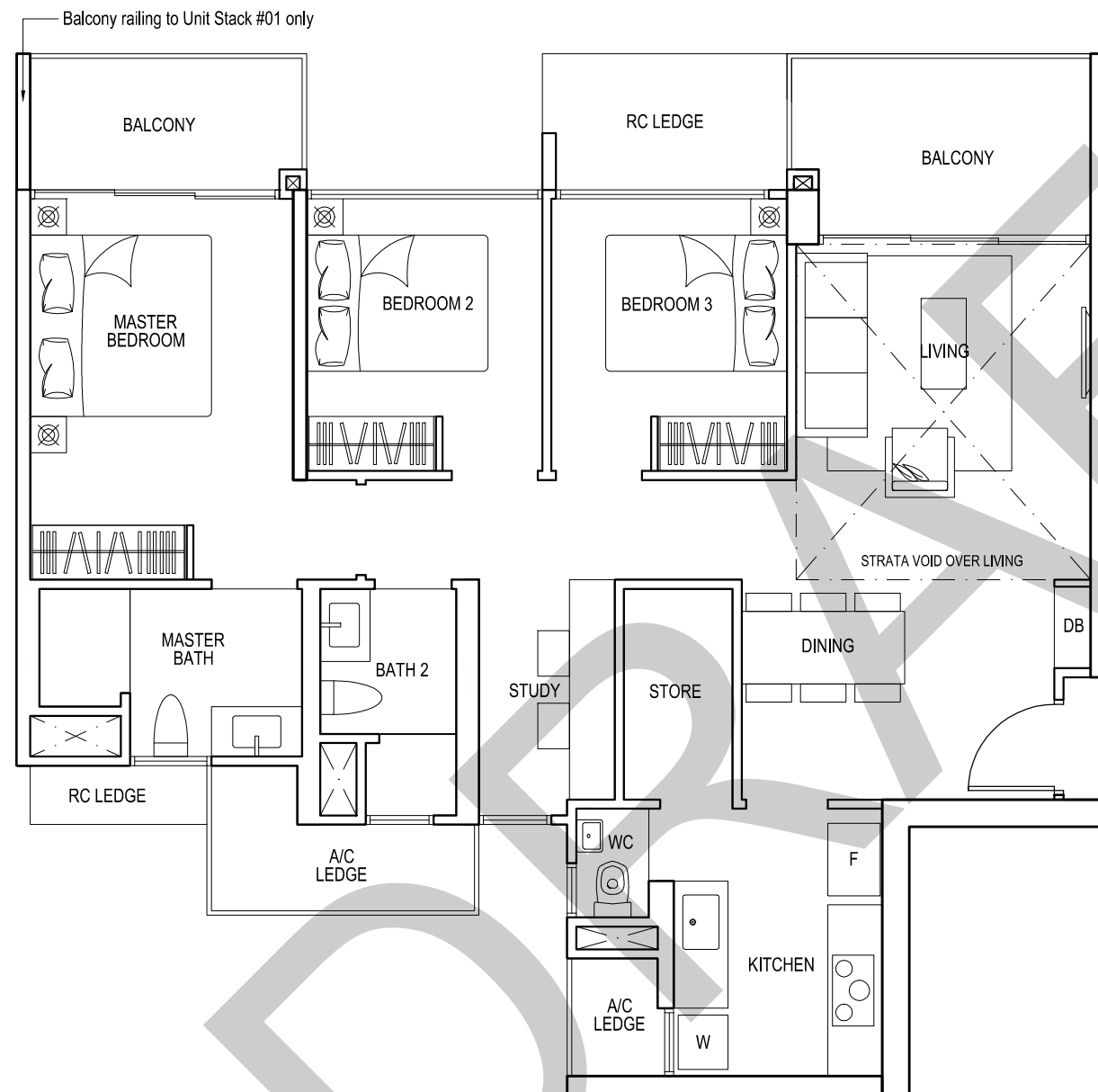
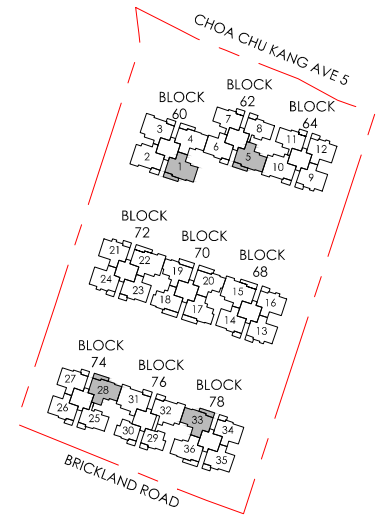
TYPE CS3bp 3 - BEDROOM COSPACE

STRATA SFA: 102 sq.m. / 1098 sq.ft.

UNIT	MIRRORED
#01-01	#01-28
#01-05	
#01-33	



All areas stated herein include PES (private enclosed space), balcony, A/C Ledge and void where applicable. All areas and measurements stated herein are approximate and subject to adjustment on final survey. Layout / location of fan coil units, DB, electrical points, door swing directions and plaster ceiling boards are subject to Developer's sole discretion and final design. Please refer to the key plan for orientation.



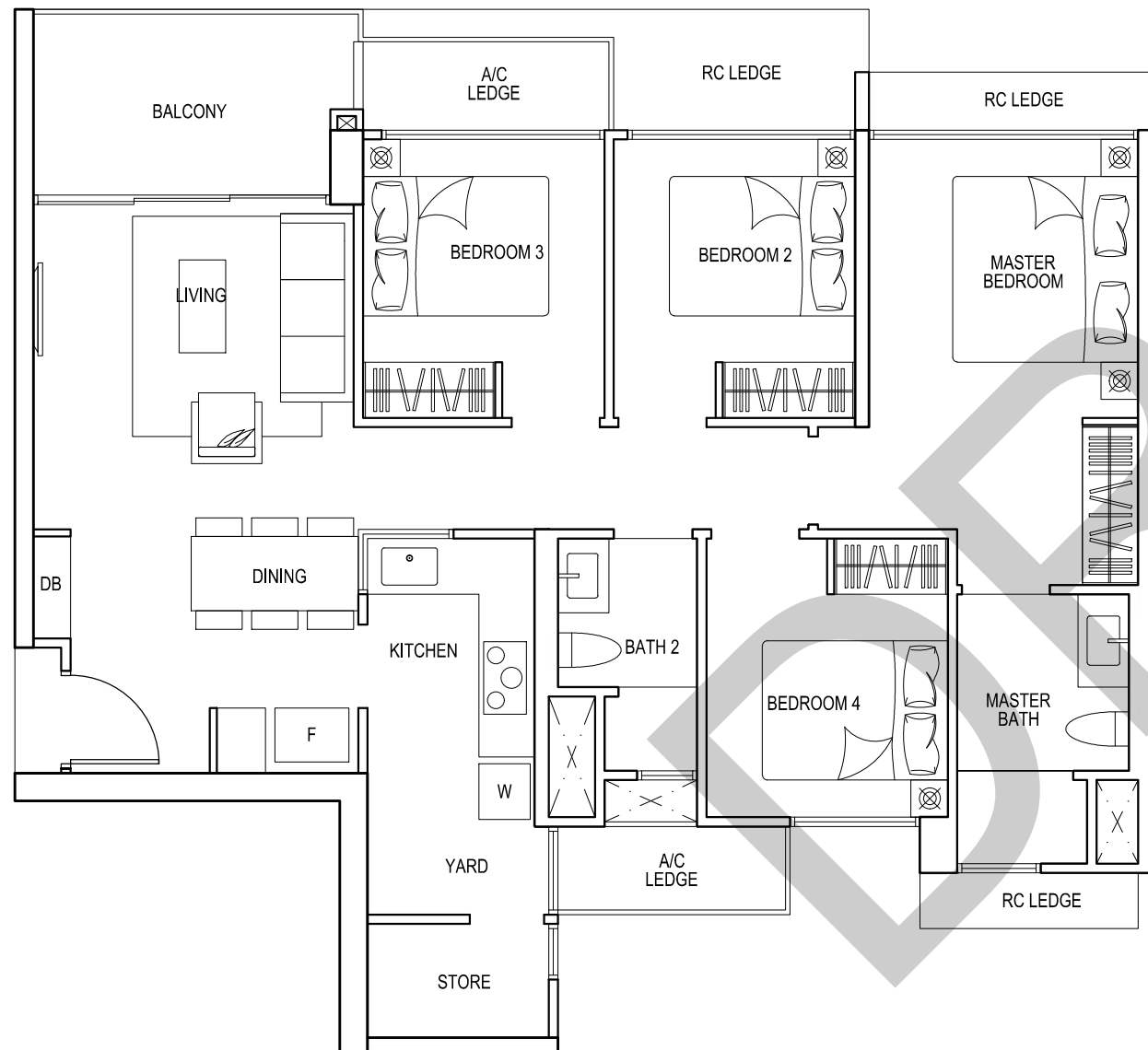
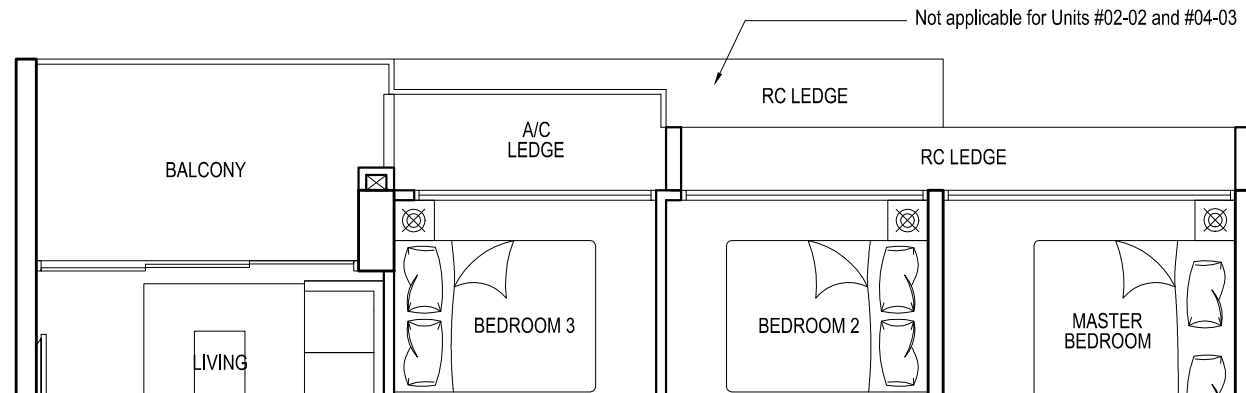
TYPE CS3bL
3 - BEDROOM COSPACE

STRATA SFA: 116 sq.m. / 1249 sq.ft.

UNIT MIRRORED
 #15-01 #16-28
 #15-05
 #16-33



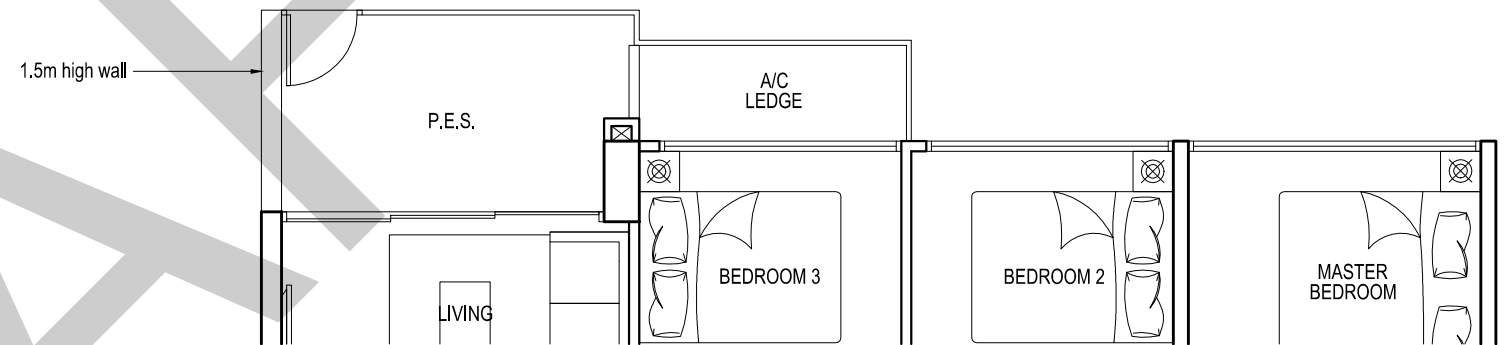
All areas stated herein include PES (private enclosed space), balcony, A/C Ledge and void where applicable. All areas and measurements stated herein are approximate and subject to adjustment on final survey. Layout / location of fan coil units, DB, electrical points, door swing directions and plaster ceiling boards are subject to Developer's sole discretion and final design. Please refer to the key plan for orientation.



TYPE D1 4 - BEDROOM DELUXE

STRATA SFA: 103 sq.m. / 1109 sq.ft.

UNIT	MIRRORED
#02-02	#04-03
#04-02	#06-03
#06-02	#08-03
#08-02	#10-03
#10-02	#12-03
#12-02	#14-03
#14-02	



TYPE D1p 4 - BEDROOM DELUXE

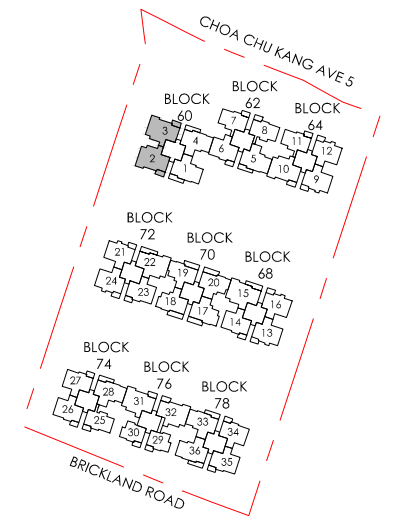
STRATA SFA: 103 sq.m. / 1109 sq.ft.

UNIT
#01-02

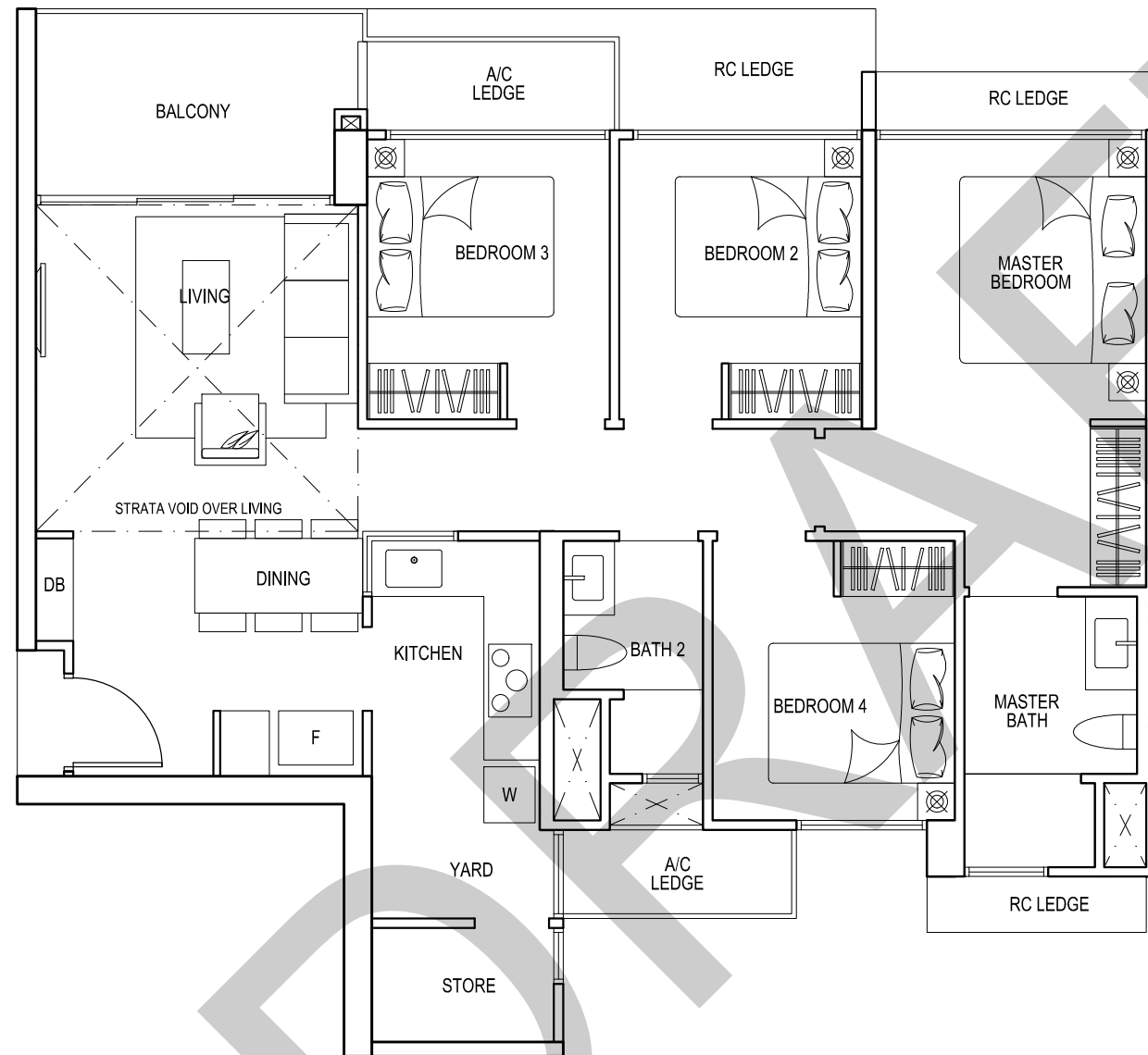
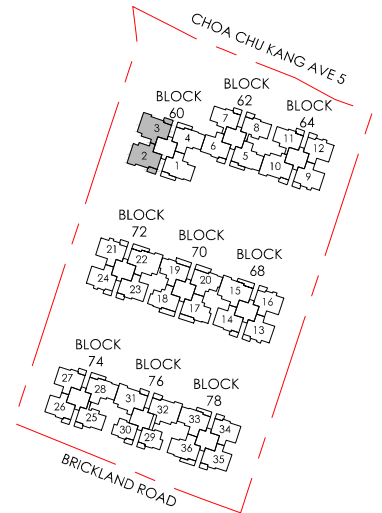
TYPE D1 4 - BEDROOM DELUXE

STRATA SFA: 103 sq.m. / 1109 sq.ft.

UNIT	MIRRORED
#03-02	#05-03
#05-02	#07-03
#07-02	#09-03
#09-02	#11-03
#11-02	#13-03
#13-02	



All areas stated herein include PES (private enclosed space), balcony, A/C Ledge and void where applicable. All areas and measurements stated herein are approximate and subject to adjustment on final survey. Layout / location of fan coil units, DB, electrical points, door swing directions and plaster ceiling boards are subject to Developer's sole discretion and final design. Please refer to the key plan for orientation.



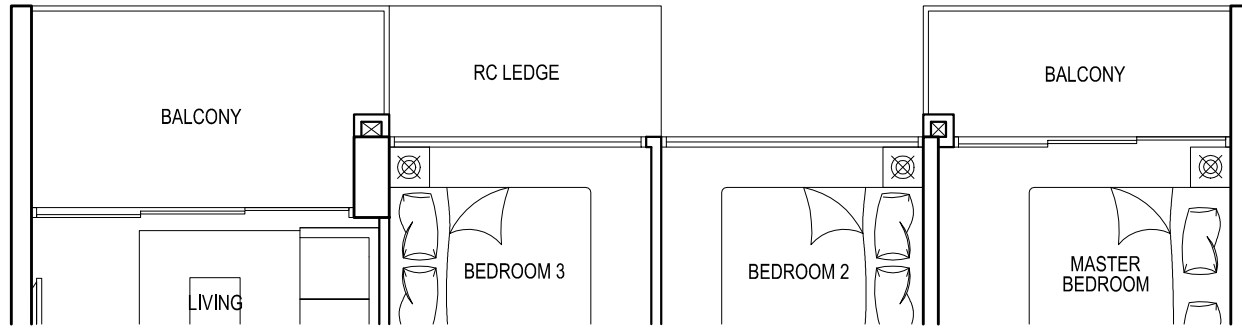
TYPE D1L
4 - BEDROOM DELUXE

STRATA SFA: 116 sq.m. / 1249 sq.ft.

UNIT #15-02 MIRRORED #15-03



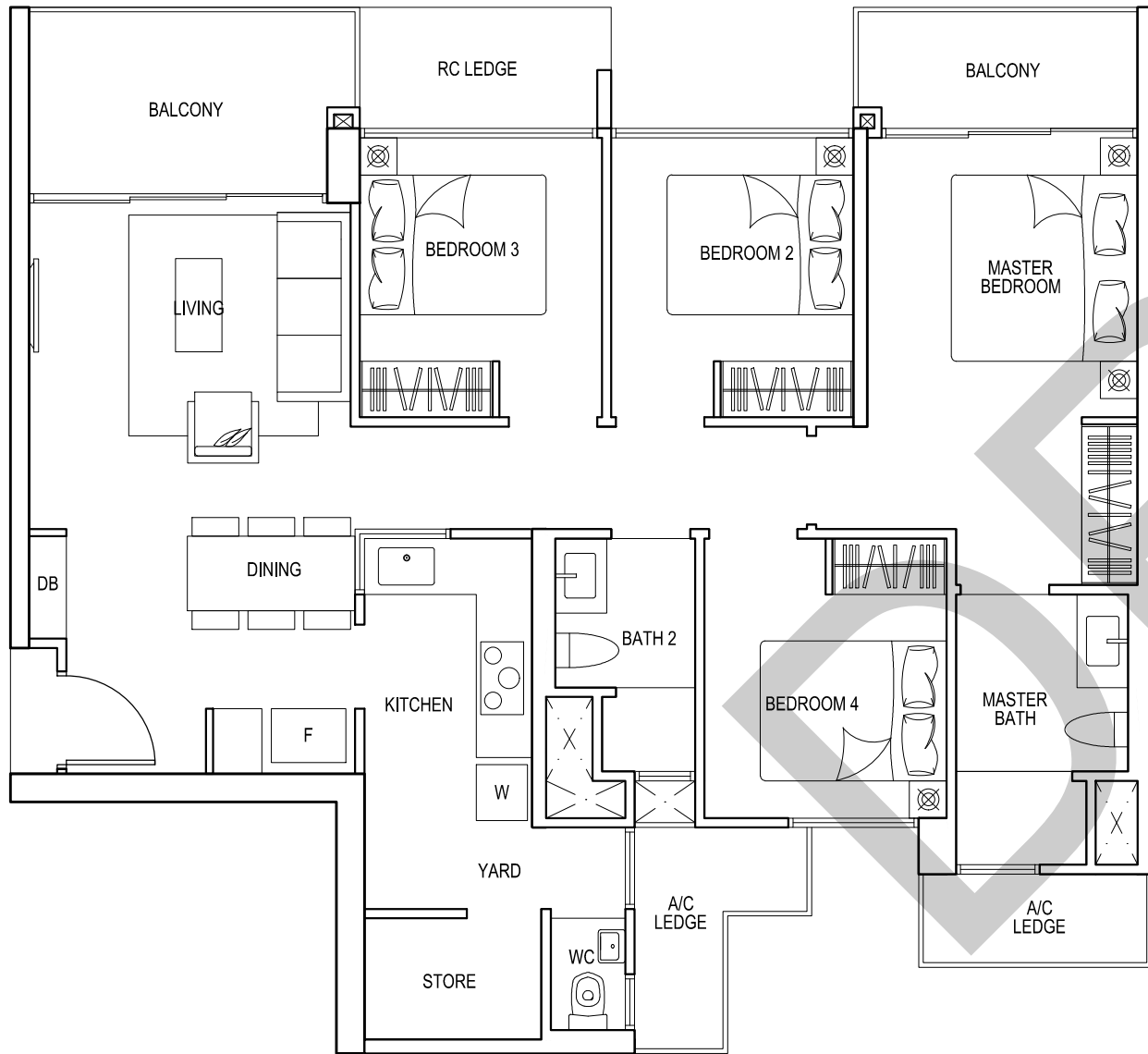
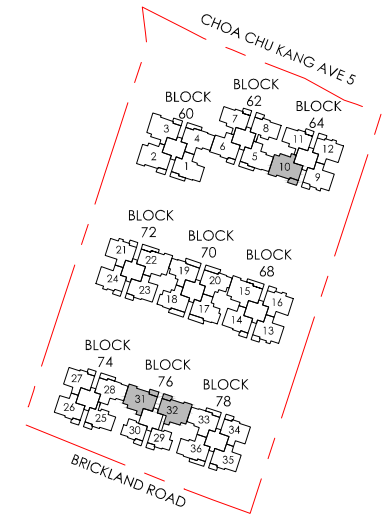
All areas stated herein include PES (private enclosed space), balcony, A/C Ledge and void where applicable. All areas and measurements stated herein are approximate and subject to adjustment on final survey. Layout / location of fan coil units, DB, electrical points, door swing directions and plaster ceiling boards are subject to Developer's sole discretion and final design. Please refer to the key plan for orientation.



TYPE D2 4 - BEDROOM PREMIUM

STRATA SFA: 110 sq.m. / 1184 sq.ft.

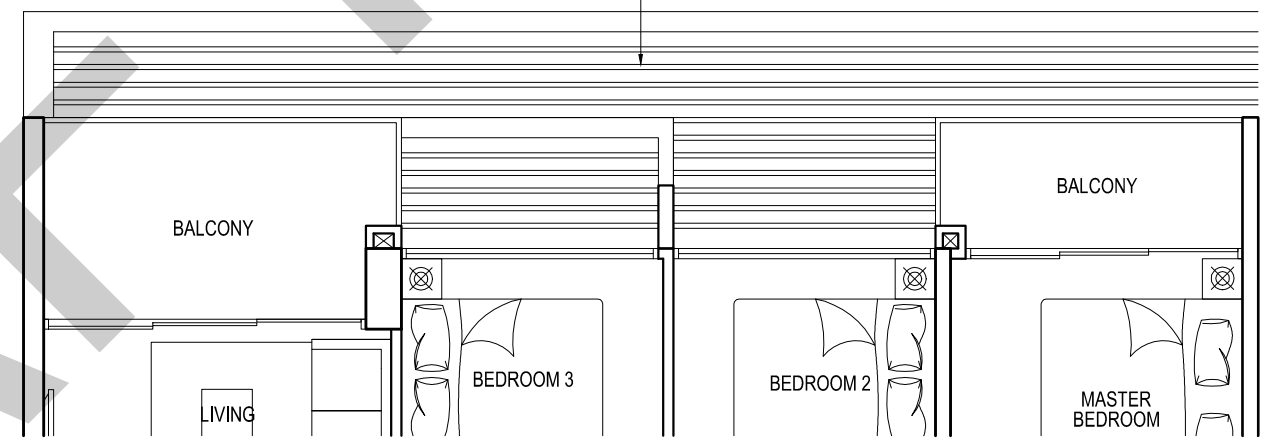
UNIT	MIRRORED	
#02-10	#03-32	#03-31
#04-10	#05-32	#05-31
#06-10	#07-32	#07-31
#08-10	#09-32	#09-31
#12-10	#11-32	#11-31
#14-10	#13-32	#13-31
	#15-32	#15-31



TYPE D2 4 - BEDROOM PREMIUM

STRATA SFA: 110 sq.m. / 1184 sq.ft.

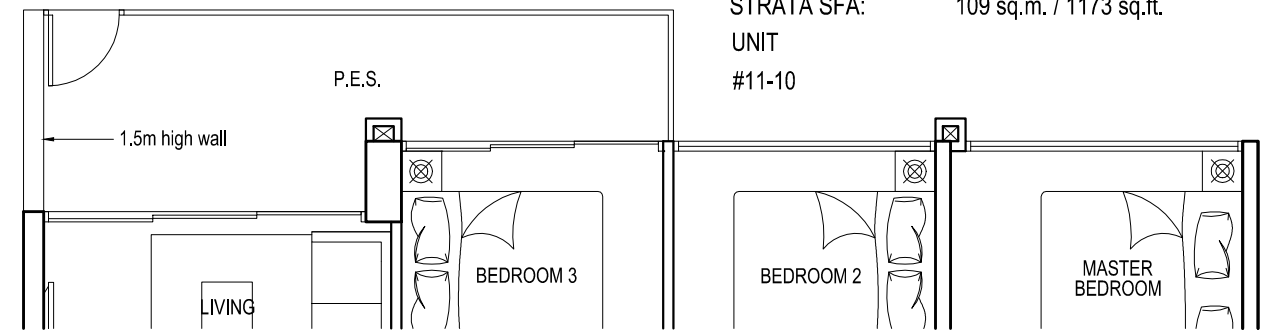
UNIT	MIRRORED	
#03-10	#02-32	#02-31
#05-10	#04-32	#04-31
#07-10	#06-32	#06-31
#13-10	#08-32	#08-31
	#10-32	#10-31
	#12-32	#12-31
	#14-32	#14-31



TYPE D2 4 - BEDROOM PREMIUM

STRATA SFA: 109 sq.m. / 1173 sq.ft.

UNIT #11-10



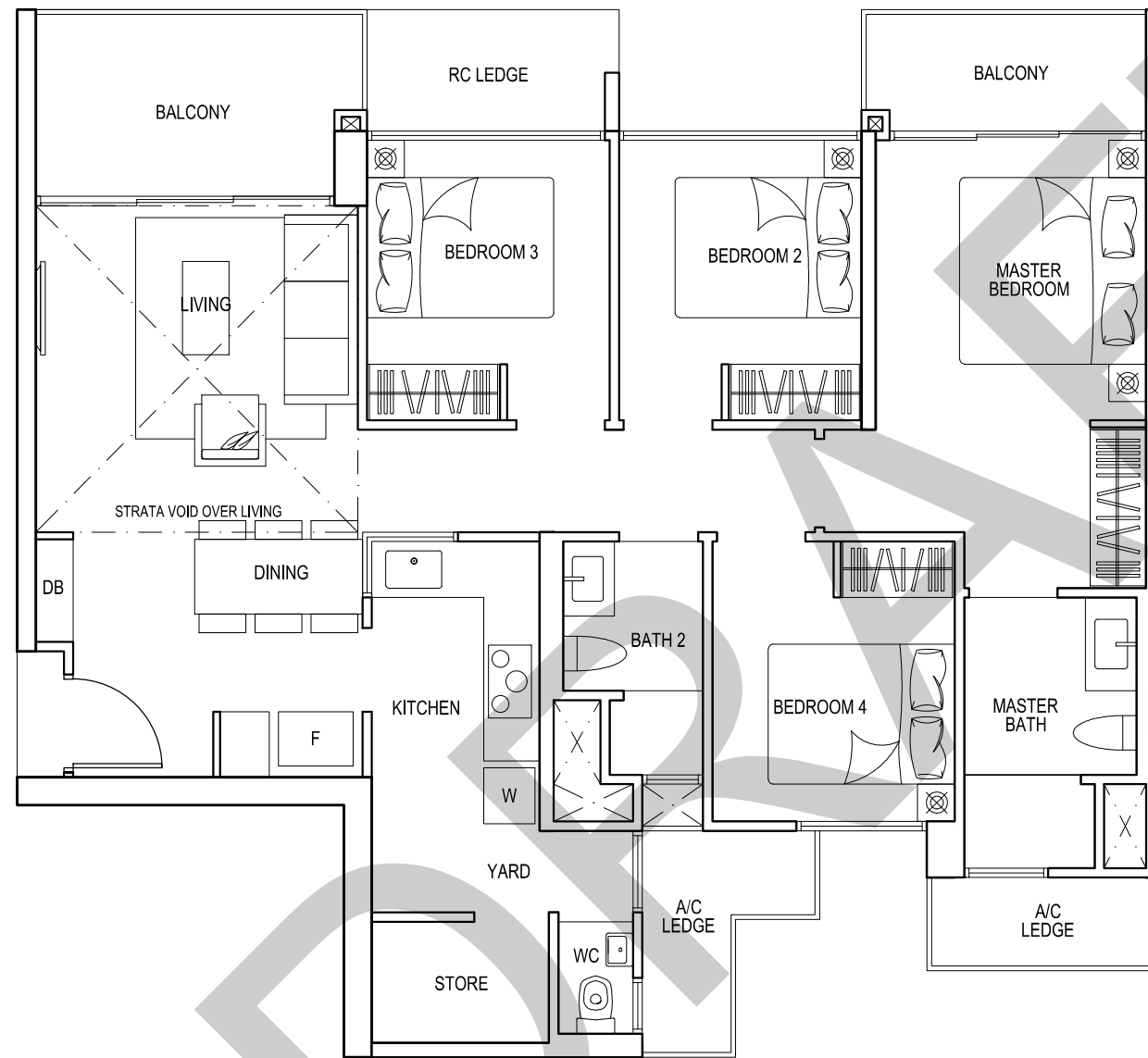
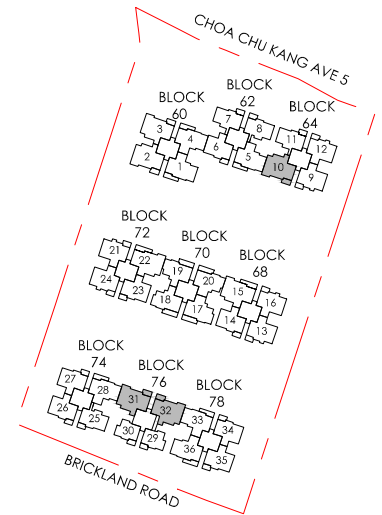
TYPE D2p 4 - BEDROOM PREMIUM

STRATA SFA: 109 sq.m. / 1173 sq.ft.

UNIT	MIRRORED
#01-10	#01-31
#01-32	



All areas stated herein include PES (private enclosed space), balcony, A/C Ledge and void where applicable. All areas and measurements stated herein are approximate and subject to adjustment on final survey. Layout / location of fan coil units, DB, electrical points, door swing directions and plaster ceiling boards are subject to Developer's sole discretion and final design. Please refer to the key plan for orientation.



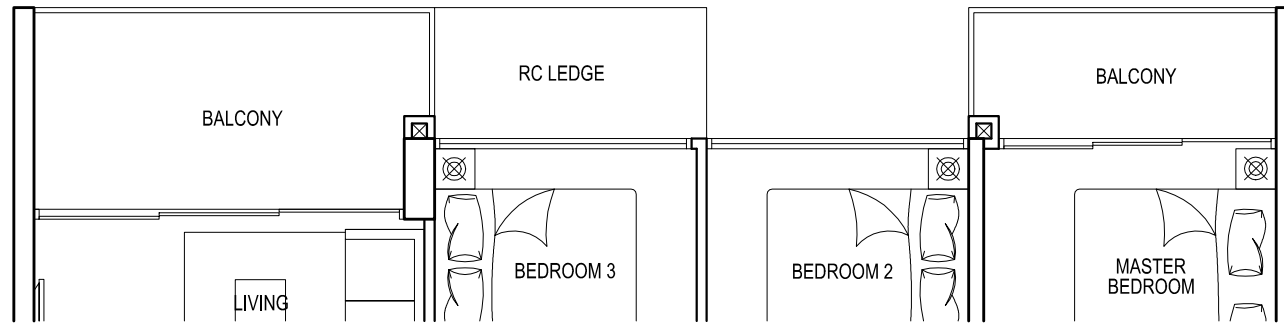
TYPE D2L
4 - BEDROOM PREMIUM

STRATA SFA: 123 sq.m. / 1324 sq.ft.

UNIT MIRRORED
 #15-10 #16-31
 #16-32



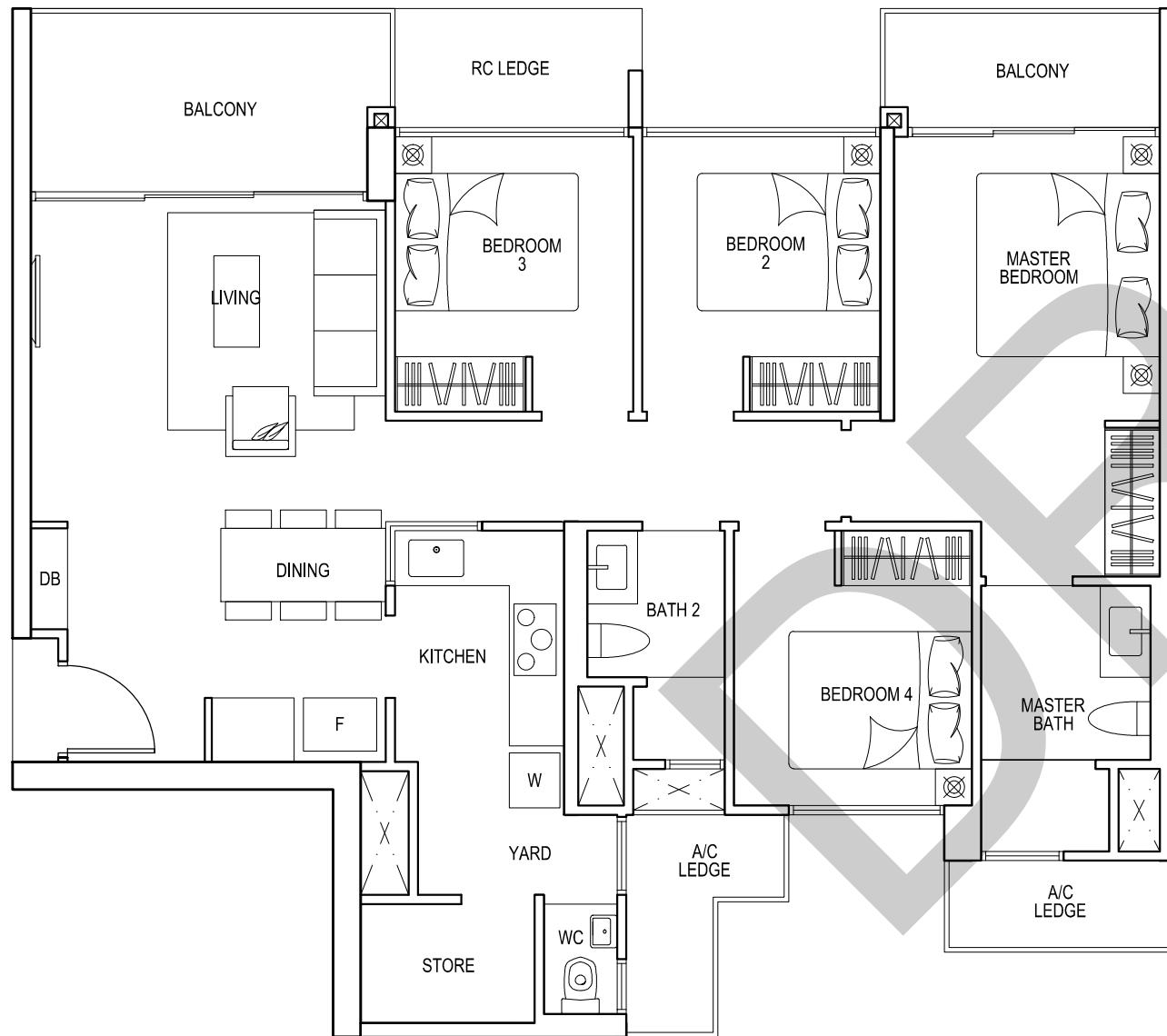
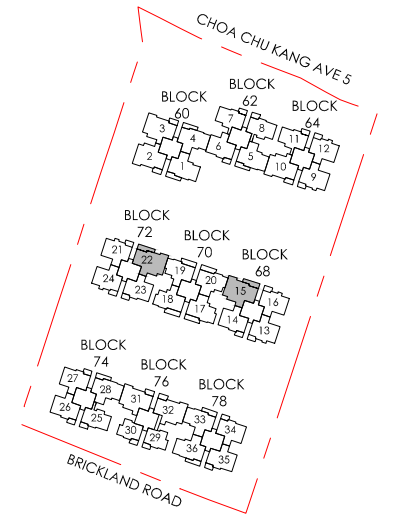
All areas stated herein include PES (private enclosed space), balcony, A/C Ledge and void where applicable. All areas and measurements stated herein are approximate and subject to adjustment on final survey. Layout / location of fan coil units, DB, electrical points, door swing directions and plaster ceiling boards are subject to Developer's sole discretion and final design. Please refer to the key plan for orientation.



TYPE D3 4 - BEDROOM PREMIUM

STRATA SFA: 113 sq.m. / 1216 sq.ft.

UNIT	MIRRORED
#02-22	#04-15
#04-22	#06-15
#06-22	#08-15
#08-22	#10-15
#10-22	#12-15
#12-22	#14-15
#14-22	



TYPE D3 4 - BEDROOM PREMIUM

STRATA SFA: 113 sq.m. / 1216 sq.ft.

UNIT	MIRRORED
#03-22	#03-15
#05-22	#05-15
#07-22	#07-15
#09-22	#09-15
#11-22	#11-15
#13-22	#13-15



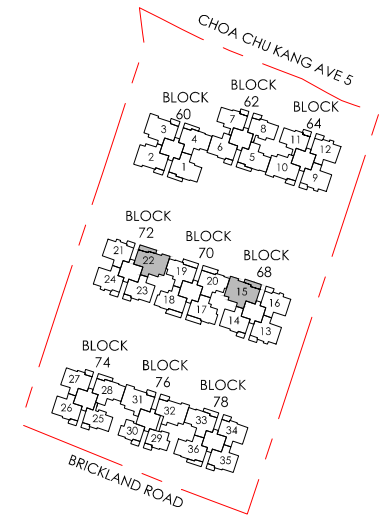
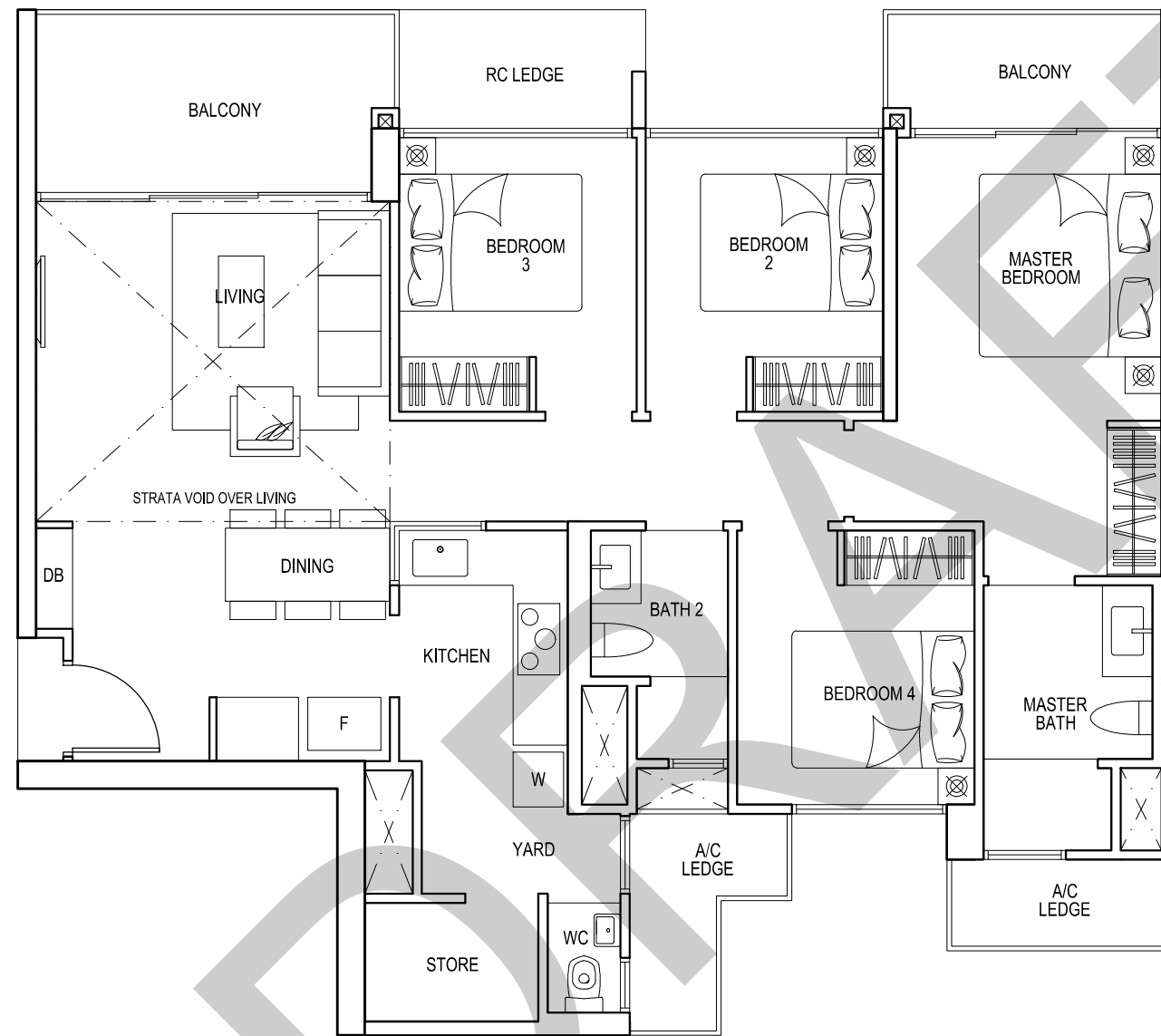
TYPE D3p 4 - BEDROOM PREMIUM

STRATA SFA: 113 sq.m. / 1216 sq.ft.

UNIT
#01-22



All areas stated herein include PES (private enclosed space), balcony, A/C Ledge and void where applicable. All areas and measurements stated herein are approximate and subject to adjustment on final survey. Layout / location of fan coil units, DB, electrical points, door swing directions and plaster ceiling boards are subject to Developer's sole discretion and final design. Please refer to the key plan for orientation.



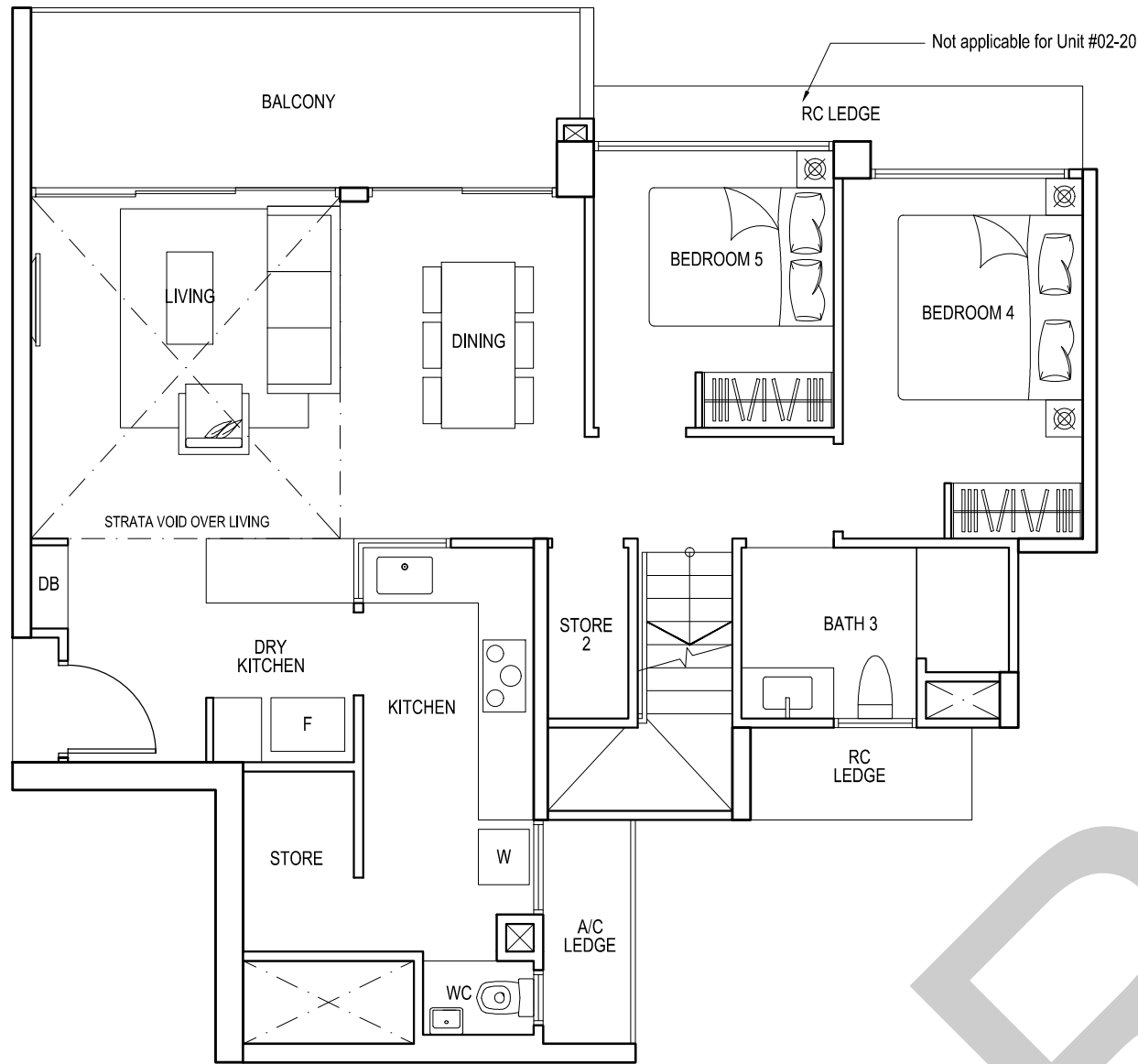
TYPE D3L
4 - BEDROOM PREMIUM

STRATA SFA: 128 sq.m. / 1378 sq.ft.

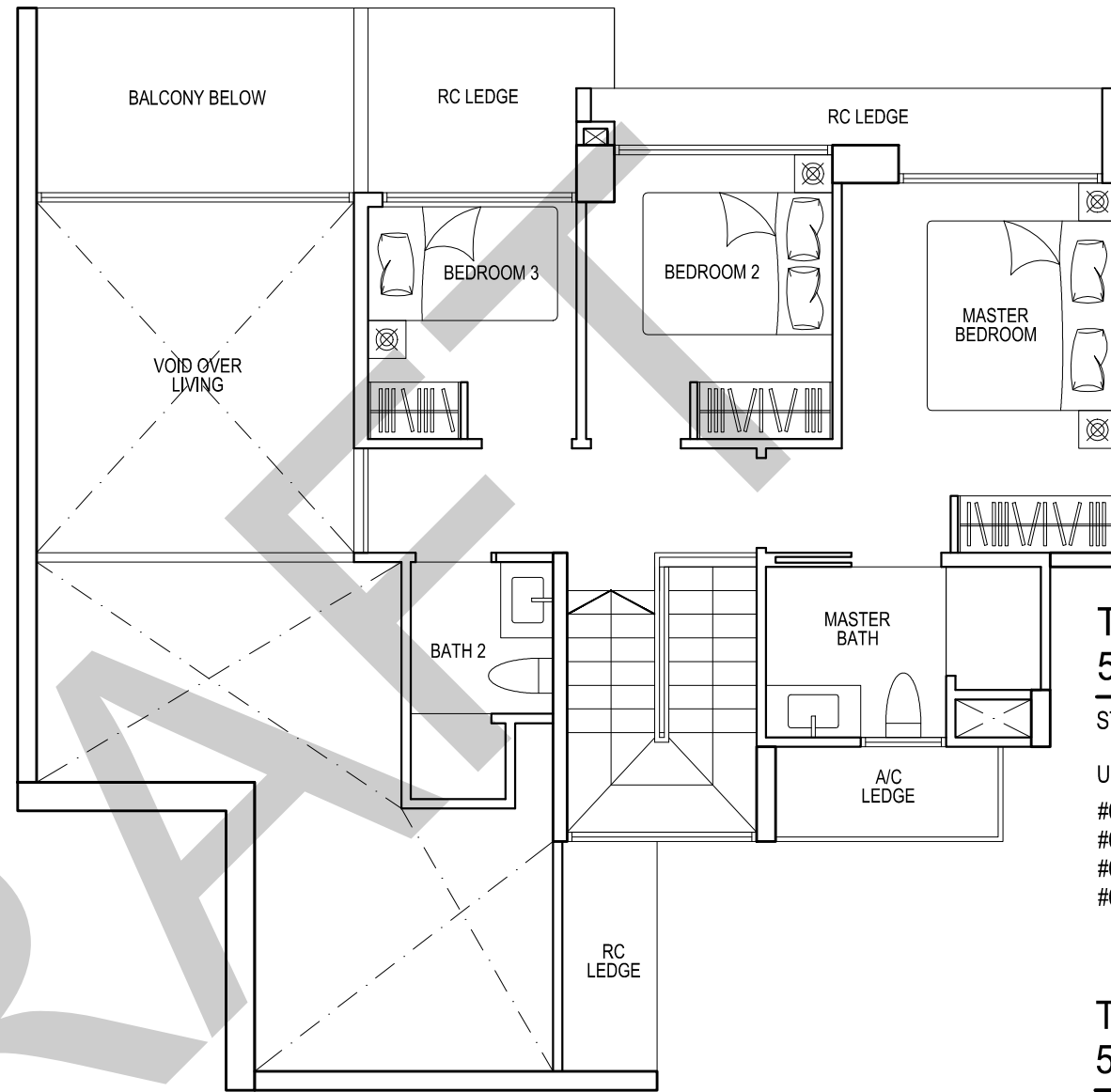
UNIT MIRRORED
 #15-22 #15-15



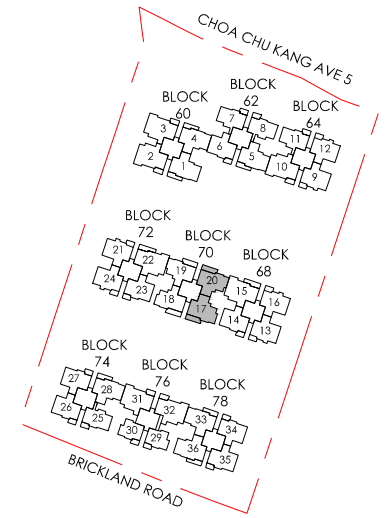
All areas stated herein include PES (private enclosed space), balcony, A/C Ledge and void where applicable. All areas and measurements stated herein are approximate and subject to adjustment on final survey. Layout / location of fan coil units, DB, electrical points, door swing directions and plaster ceiling boards are subject to Developer's sole discretion and final design. Please refer to the key plan for orientation.



LOWER LEVEL



UPPER LEVEL



**TYPE E1
5 - BEDROOM MAISONETTE**

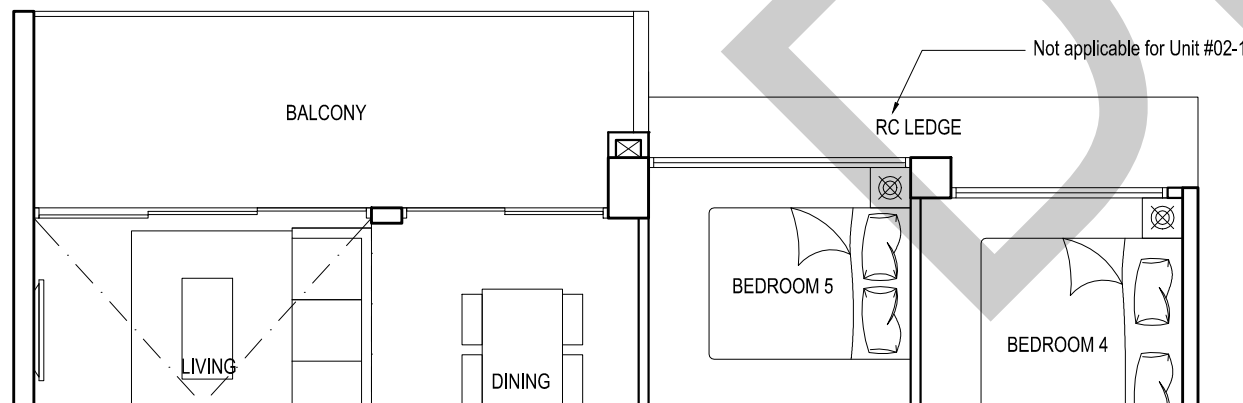
STRATA SFA: 159 sq.m. / 1711 sq.ft.

- UNIT
- #02-20 #10-20
 - #04-20 #12-20
 - #06-20 #14-20
 - #08-20

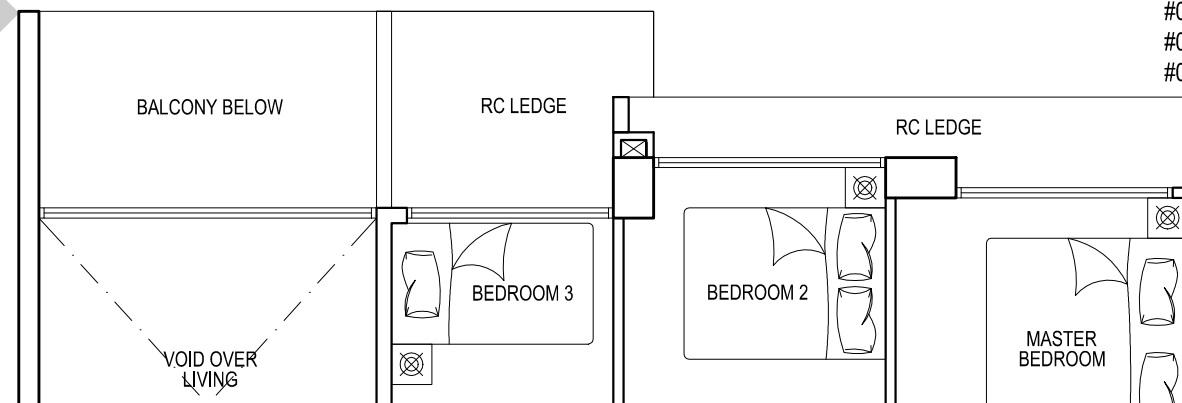
**TYPE E1
5 - BEDROOM MAISONETTE**

STRATA SFA: 159 sq.m. / 1711 sq.ft.

- MIRRORED
- #02-17 #10-17
 - #04-17 #12-17
 - #06-17 #14-17
 - #08-17



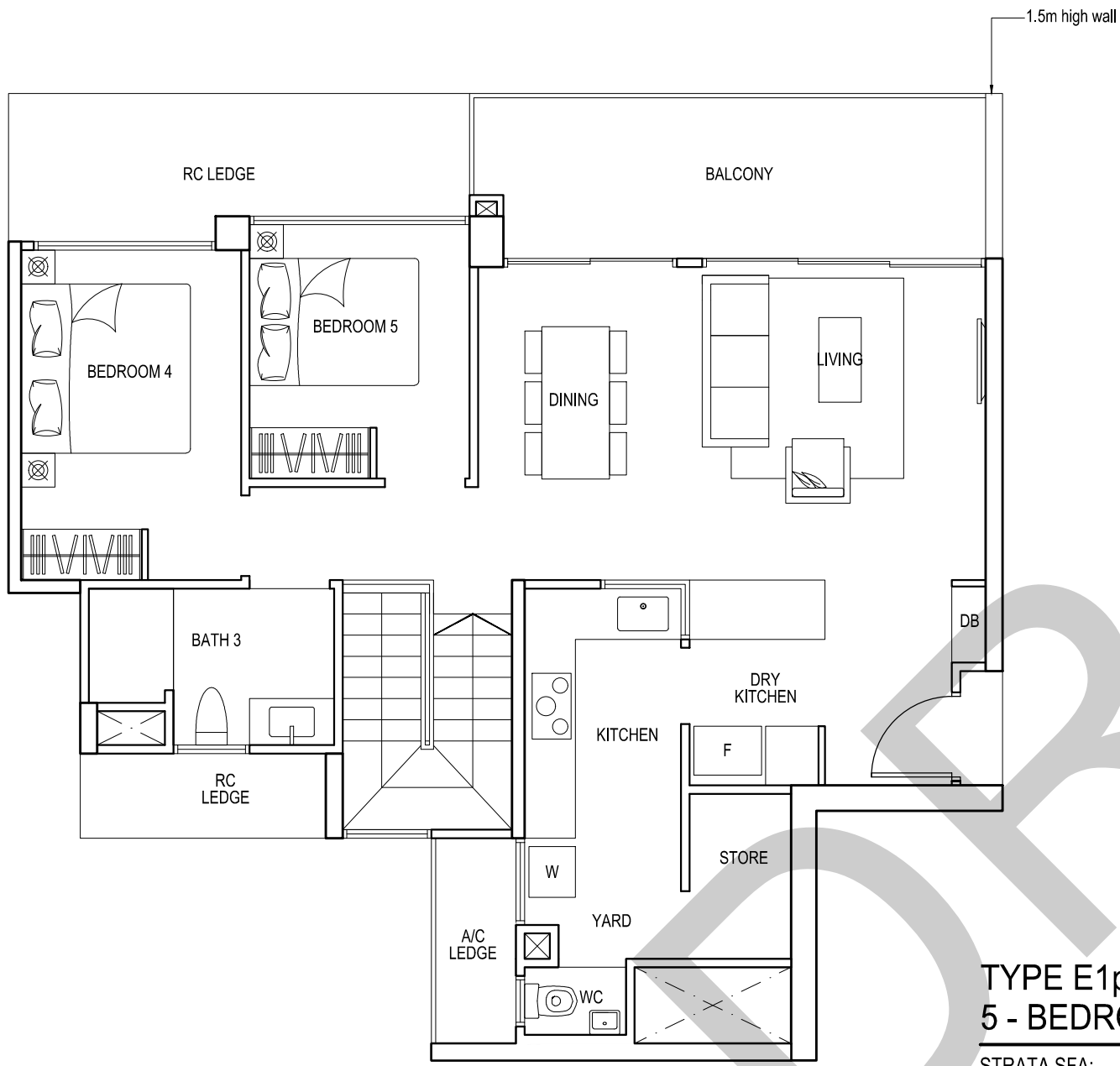
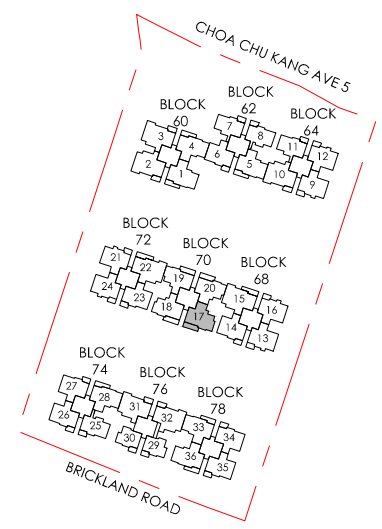
LOWER LEVEL



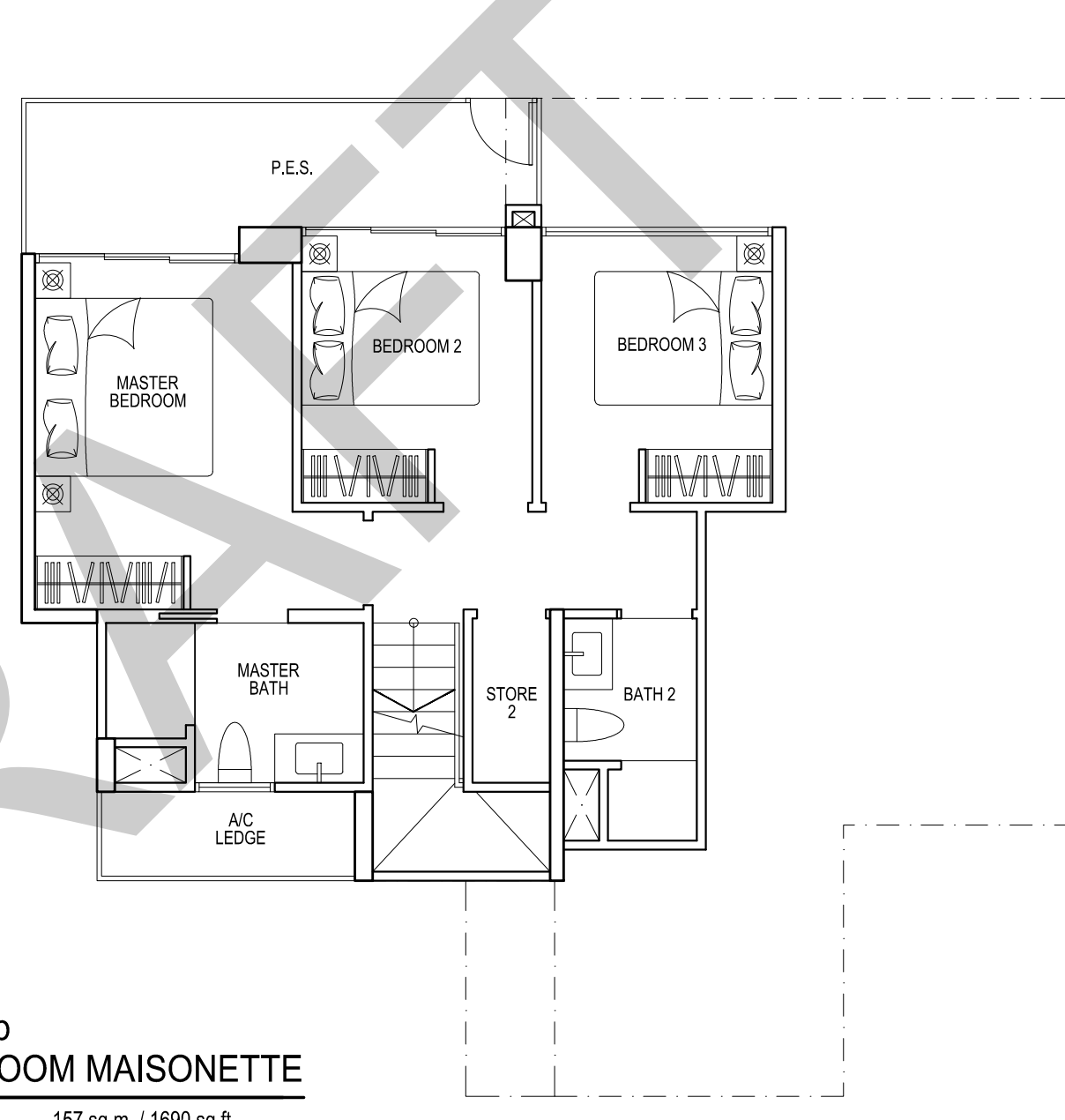
UPPER LEVEL



All areas stated herein include PES (private enclosed space), balcony, A/C Ledge and void where applicable. All areas and measurements stated herein are approximate and subject to adjustment on final survey. Layout / location of fan coil units, DB, electrical points, door swing directions and plaster ceiling boards are subject to Developer's sole discretion and final design. Please refer to the key plan for orientation.



UPPER LEVEL

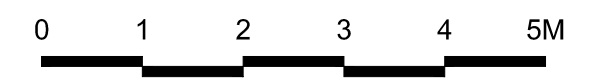


LOWER LEVEL

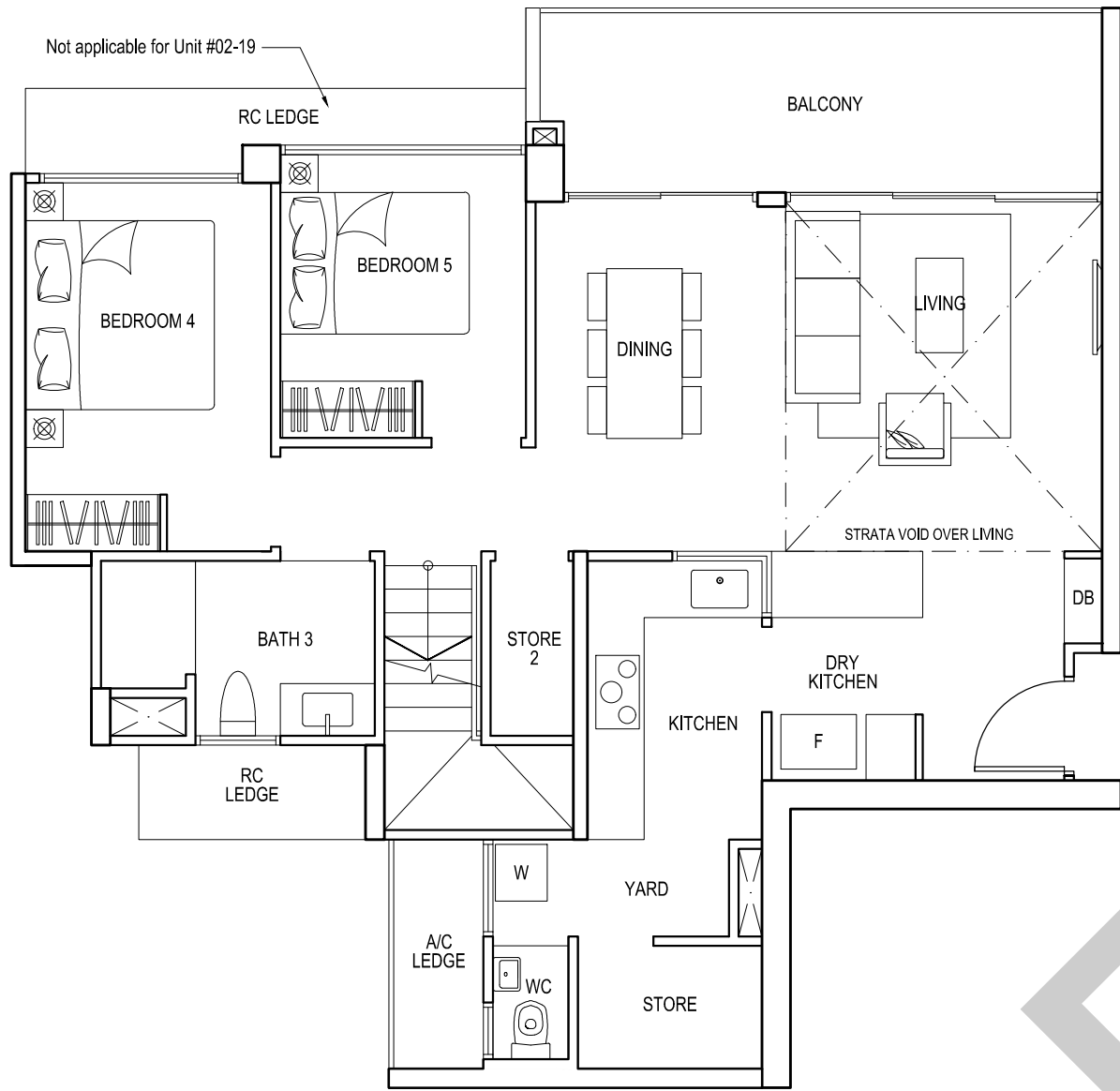
**TYPE E1p
5 - BEDROOM MAISONETTE**

STRATA SFA: 157 sq.m. / 1690 sq.ft.

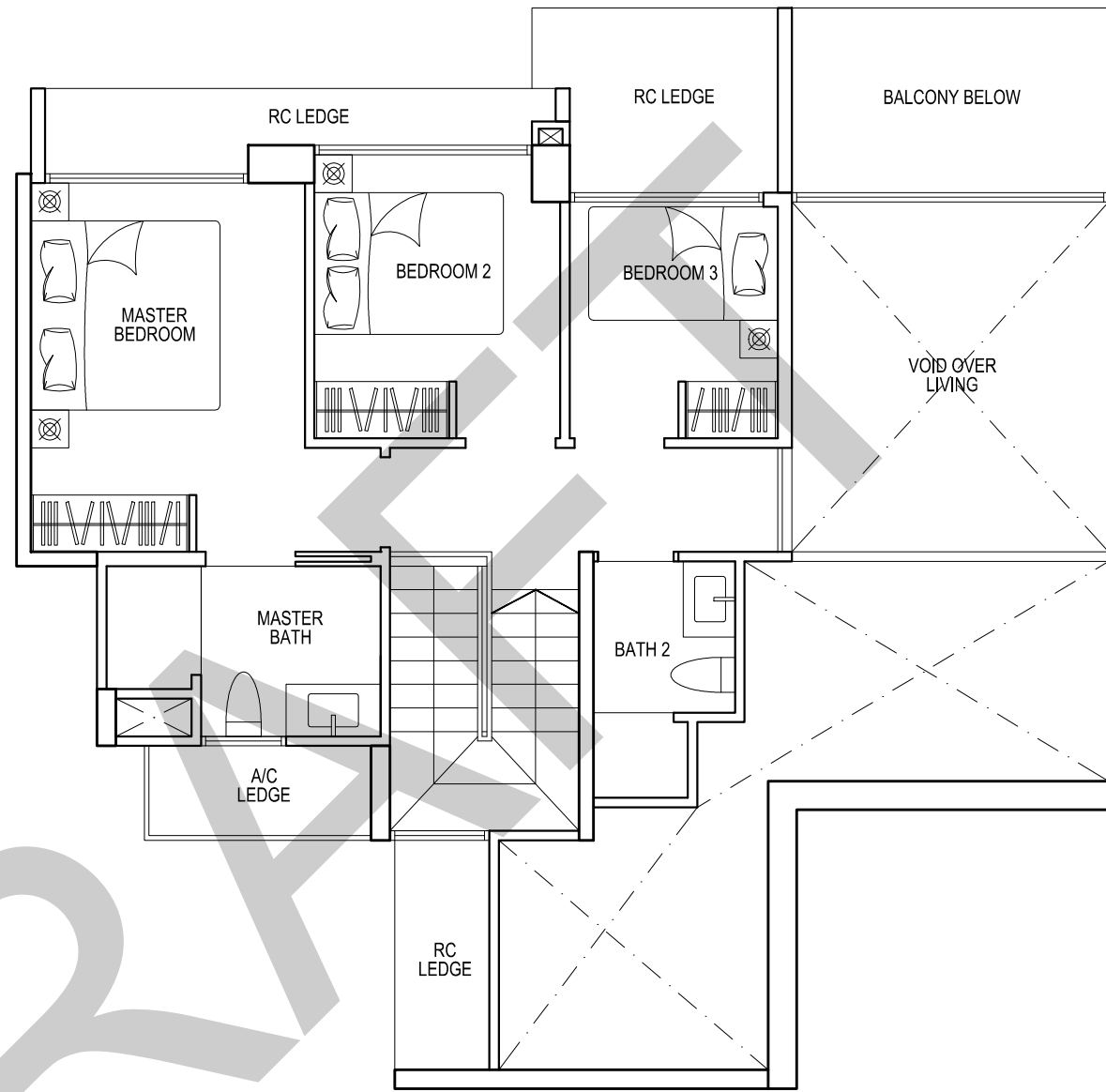
UNIT
#01-17



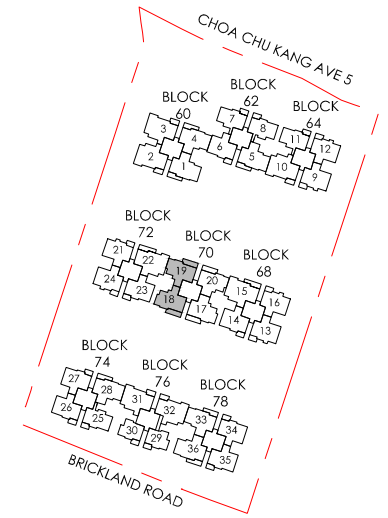
All areas stated herein include PES (private enclosed space), balcony, A/C Ledge and void where applicable. All areas and measurements stated herein are approximate and subject to adjustment on final survey. Layout / location of fan coil units, DB, electrical points, door swing directions and plaster ceiling boards are subject to Developer's sole discretion and final design. Please refer to the key plan for orientation.



LOWER LEVEL



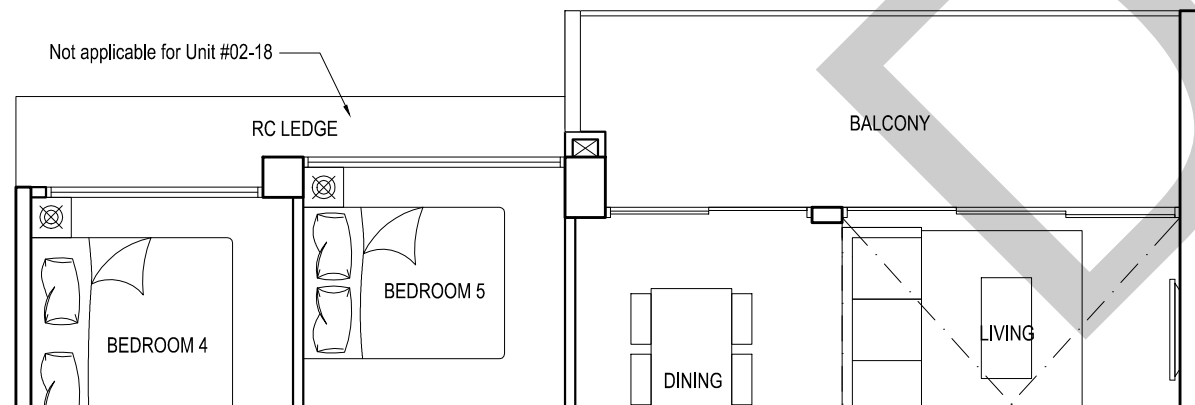
UPPER LEVEL



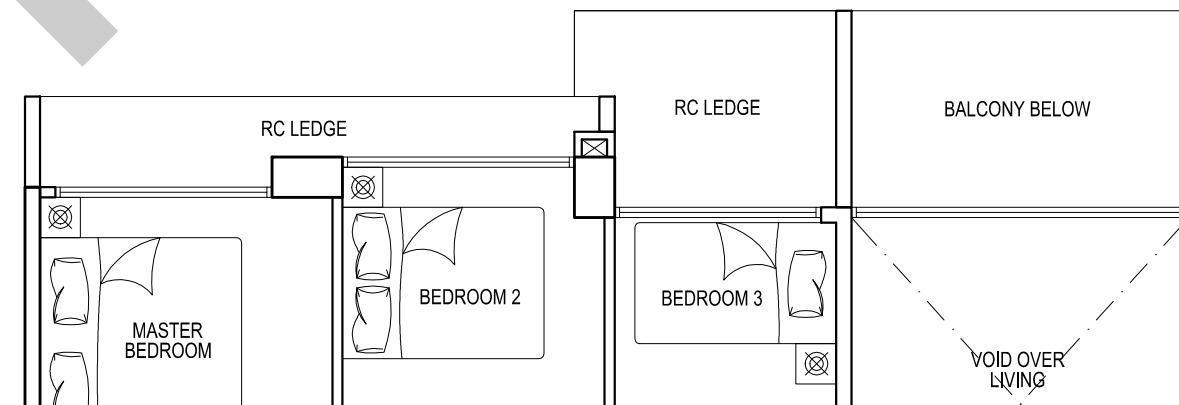
TYPE E2
5 - BEDROOM MAISONETTE

STRATA SFA: 159 sq.m. / 1711 sq.ft.

UNIT	
#02-19	#10-19
#04-19	#12-19
#06-19	#14-19
#08-19	



LOWER LEVEL



UPPER LEVEL

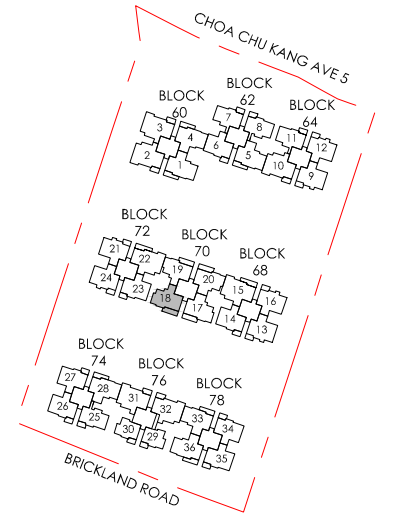
TYPE E2
5 - BEDROOM MAISONETTE

STRATA SFA: 159 sq.m. / 1711 sq.ft.

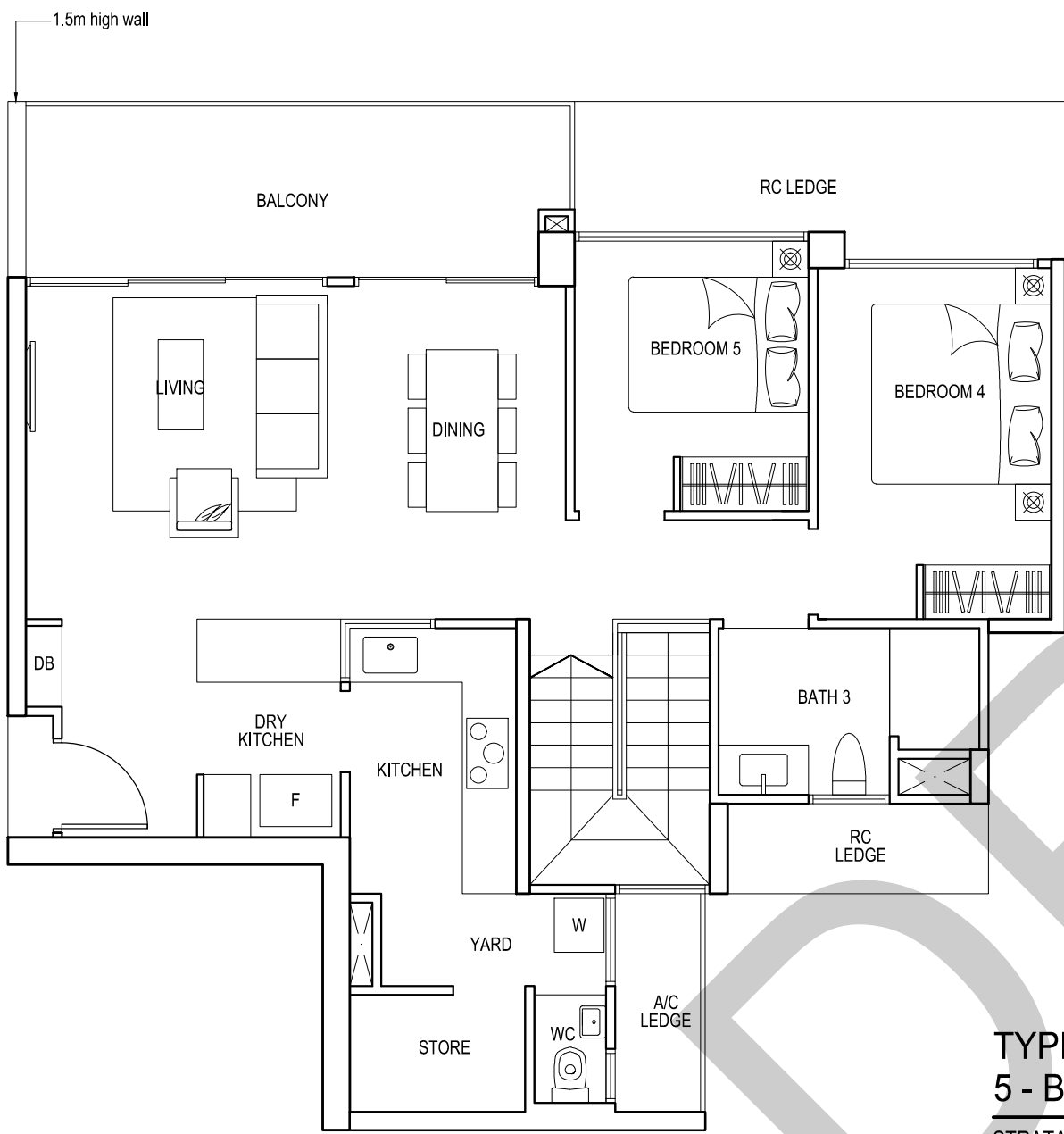
MIRRORED	
#02-18	#10-18
#04-18	#12-18
#06-18	#14-18
#08-18	



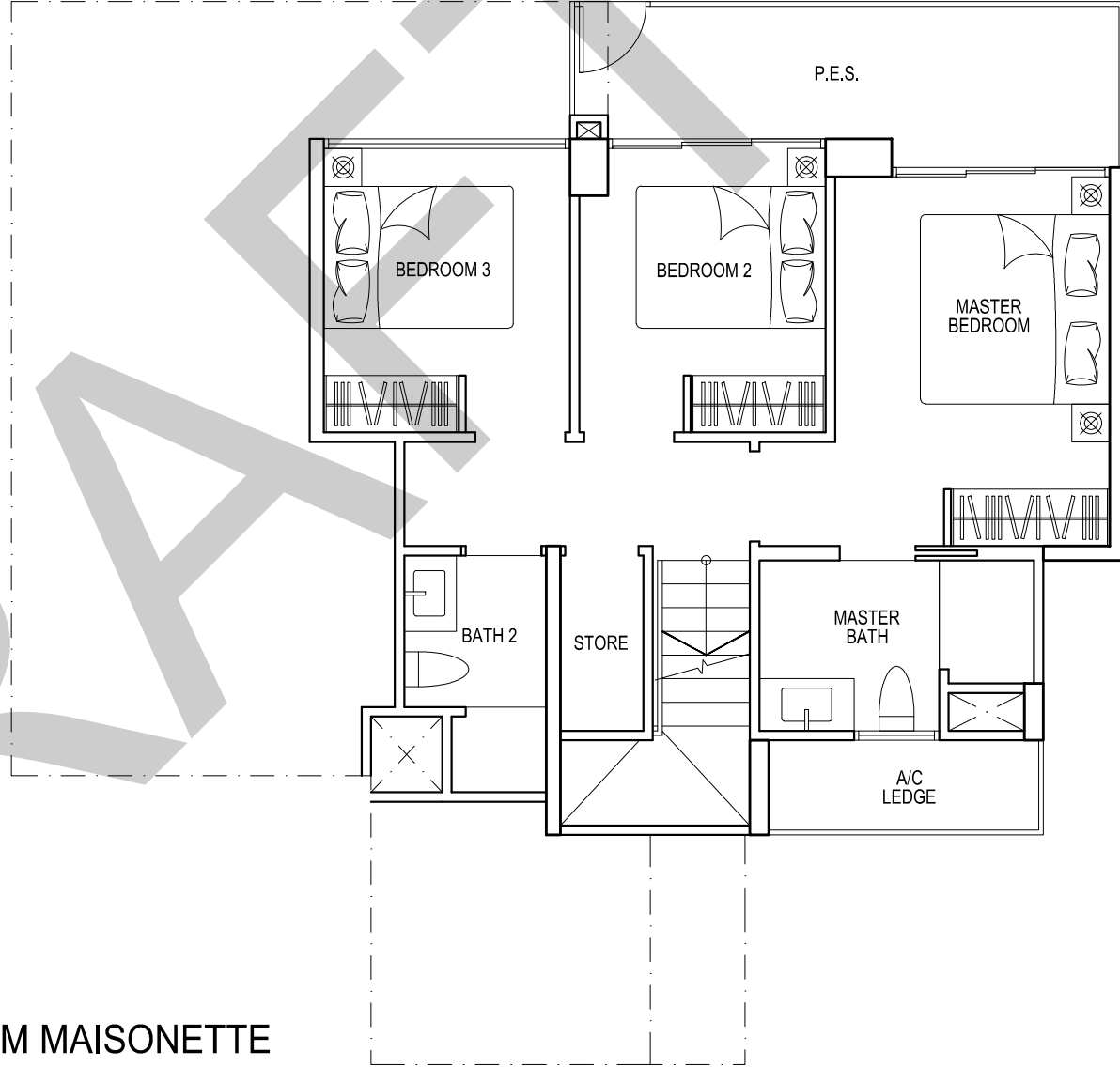
All areas stated herein include PES (private enclosed space), balcony, A/C Ledge and void where applicable. All areas and measurements stated herein are approximate and subject to adjustment on final survey. Layout / location of fan coil units, DB, electrical points, door swing directions and plaster ceiling boards are subject to Developer's sole discretion and final design. Please refer to the key plan for orientation.



N
KEY PLAN



UPPER LEVEL



LOWER LEVEL

TYPE E2p
5 - BEDROOM MAISONETTE

STRATA SFA: 157 sq.m. / 1690 sq.ft.

UNIT
#01-18



All areas stated herein include PES (private enclosed space), balcony, A/C Ledge and void where applicable. All areas and measurements stated herein are approximate and subject to adjustment on final survey. Layout / location of fan coil units, DB, electrical points, door swing directions and plaster ceiling boards are subject to Developer's sole discretion and final design. Please refer to the key plan for orientation.