

# Units Distribution

## BLOCK 45

UNIT FLR	01	02	03
17	D2R	D4(DK)R	C2R
16	D2	D4(DK)	C2
15	D2	D4(DK)	C2
14	D2	D4(DK)	C2
13	D2	D4(DK)	C2
12	D2	D4(DK)	C2
11	D2	D4(DK)	C2
10	D2	D4(DK)	C2
9	D2	D4(DK)	C2
8	D2	D4(DK)	C2
7	D2	D4(DK)	C2
6	D2	D4(DK)	C2
5	D2	D4(DK)	C2
4	D2	D4(DK)	C2
3	D2	D4(DK)	C2
2	D2	D4(DK)	C2
1	D2p	D4(DK)p	C2p

## BLOCK 45A

UNIT FLR	04	05	06	07
17	C2R	C2R	D1R	D1R
16	C2	C2	D1	D1
15	C2	C2	D1	D1
14	C2	C2	D1	D1
13	C2	C2	D1	D1
12	C2	C2	D1	D1
11	C2	C2	D1	D1
10	C2	C2	D1	D1
9	C2	C2	D1	D1
8	C2	C2	D1	D1
7	C2	C2	D1	D1
6	C2	C2	D1	D1
5	C2	C2	D1	D1
4	C2	C2	D1	D1
3			D1	D1
2			D1	
1			D1p	

## BLOCK 45B

UNIT FLR	08	09	10	11
17	D3R	D2R	C2bR	C2aR
16	D3	D2	C2b	C2a
15	D3	D2	C2b	C2a
14	D3	D2	C2b	C2a
13	D3	D2	C2b	C2a
12	D3	D2	C2b	C2a
11	D3	D2	C2b	C2a
10	D3	D2	C2b	C2a
9	D3	D2	C2b	C2a
8	D3	D2	C2b	C2a
7	D3	D2	C2b	C2a
6	D3	D2	C2b	C2a
5	D3	D2	C2b	C2a
4	D3	D2	C2b	C2a
3	D3	D2	C2b	C2a
2	D3	D2	C2b	C2a
1	D3p	D2p-a	C2p	C2ap

## BLOCK 47

UNIT FLR	12	13	14	15
17	C2R	C1T	B1T	C2R
16	C2	C1	B1	C2
15	C2	C1	B1	C2
14	C2	C1	B1	C2
13	C2	C1	B1	C2
12	C2	C1	B1	C2
11	C2	C1	B1	C2
10	C2	C1	B1	C2
9	C2	C1	B1	C2
8	C2	C1	B1	C2
7	C2	C1	B1	C2
6	C2	C1	B1	C2
5	C2	C1	B1	C2
4	C2	C1	B1	C2
3	C2	C1	B1	C2
2	C2	C1	B1	C2
1	C2p-a	C1p	B1p	C2p







## BLOCK 47A

UNIT FLR	16	17	18	19
17	C2R	C2R	C2R	D1R
16	C2	C2	C2	D1
15	C2	C2	C2	D1
14	C2	C2	C2	D1
13	C2	C2	C2	D1
12	C2	C2	C2	D1
11	C2	C2	C2	D1
10	C2	C2	C2	D1
9	C2	C2	C2	D1
8	C2	C2	C2	D1
7	C2	C2	C2	D1
6	C2	C2	C2	D1
5	C2	C2	C2	D1
4	C2	C2	C2	D1
3	C2	C2	C2	D1
2	C2	C2	C2	D1
1	C2p	C2p	C2p-a	D1p

## BLOCK 47B

UNIT FLR	20	21	22	23
17	D3R	D1R	C3(DK)R	E1R
16	D3	D1	C3(DK)	E1
15	D3	D1	C3(DK)	E1
14	D3	D1	C3(DK)	E1
13	D3	D1	C3(DK)	E1
12	D3	D1	C3(DK)	E1
11	D3	D1	C3(DK)	E1
10	D3	D1	C3(DK)	E1
9	D3	D1	C3(DK)	E1
8	D3	D1	C3(DK)	E1
7	D3	D1	C3(DK)	E1
6	D3	D1	C3(DK)	E1
5	D3	D1	C3(DK)	E1
4	D3	D1	C3(DK)	E1
3	D3	D1	C3(DK)	E1
2	D3	D1	C3(DK)	E1
1	D3p	D1p	C3(DK)p	E1p

## LEGEND

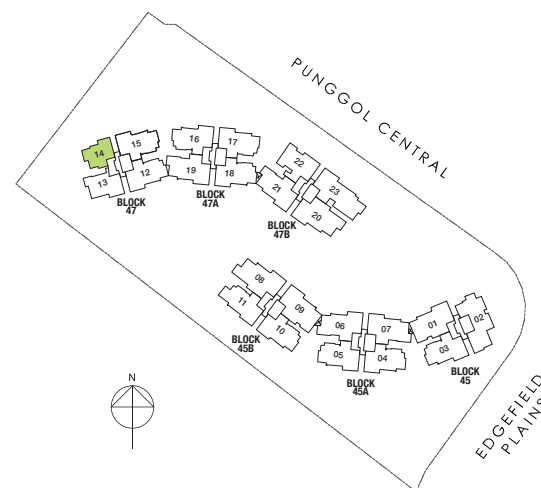
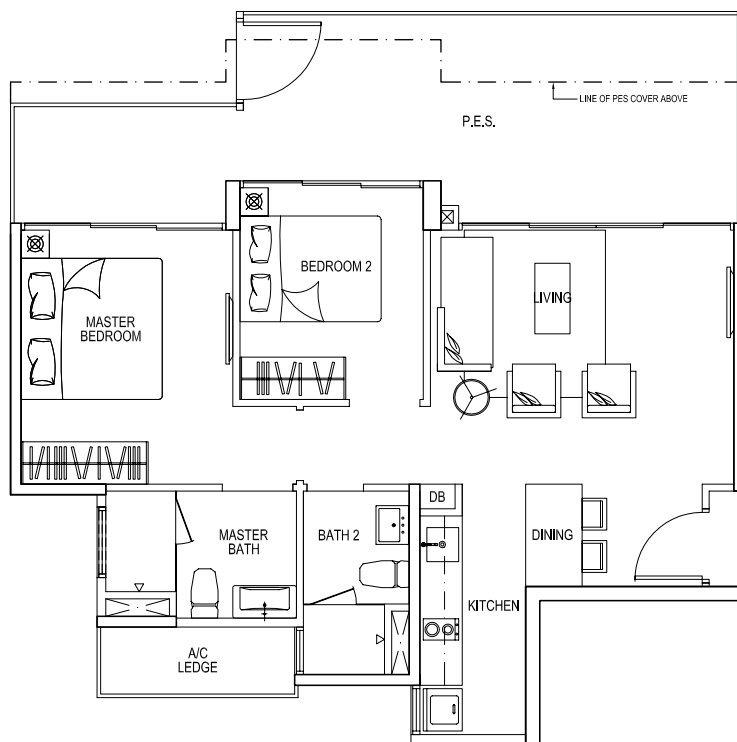
	2 Bedroom		5 Bedroom
	3 Bedroom		PES Units
	4 Bedroom		Penthouse

A/C ledge, balcony, open balcony, terrace, PES, open roof terrace and void (where applicable). Orientations and facings will differ depending on the unit you are purchasing. Please refer to the key plan. All plans are not to scale and are subject to changes as may be approved by the relevant authorities. All floor areas are estimates and are subject to final survey.

Type B1p

87 sqm / 936 sqft

#01-14

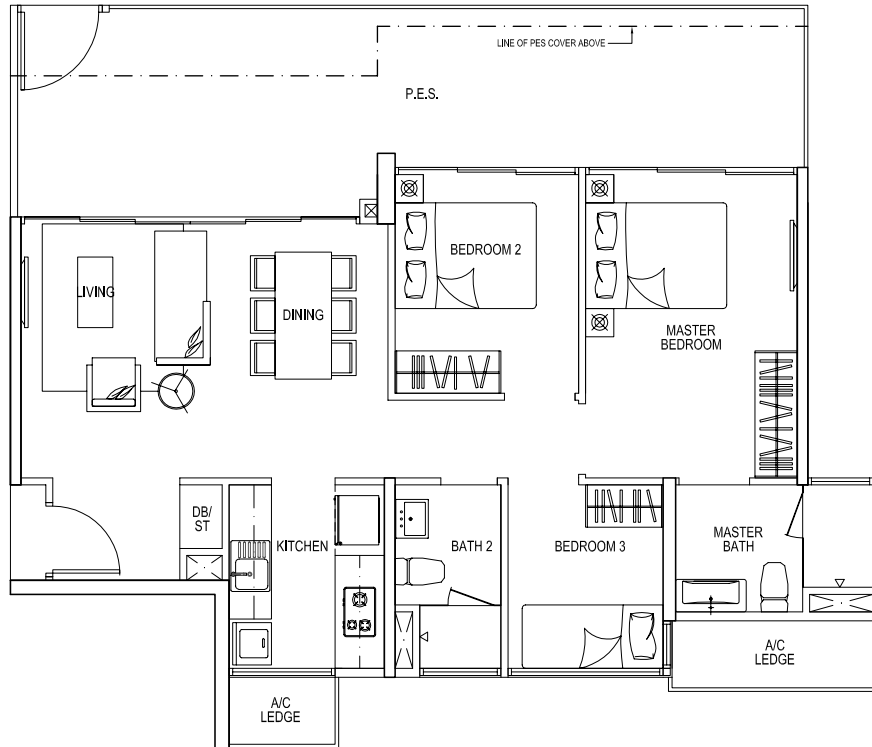


Areas includes A/C ledge, balcony, open balcony, raised planter, PES, open roof terrace and void (where applicable). Orientations and facings will differ depending on the unit you are purchasing. Please refer to the key plan. All plans are not to scale and are subject to changes as may be approved by the relevant authorities. All floor areas are estimates and are subject to final survey.

Type C1p

105 sqm / 1,130 sqft

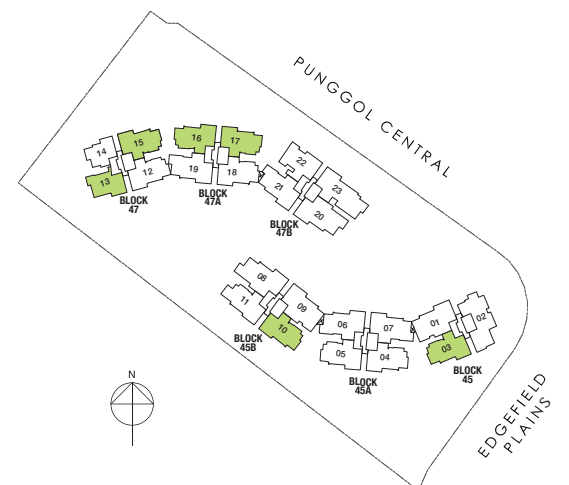
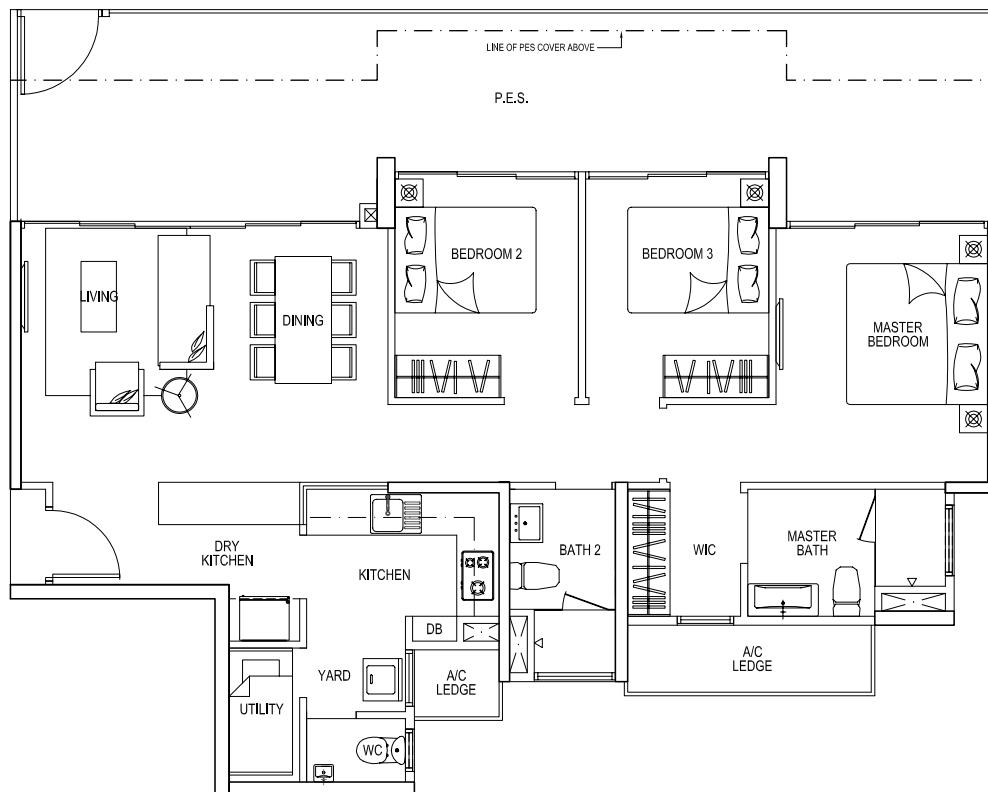
#01-13



Type C2p

130 sqm / 1,399 sqft

- #01-03
- #01-10 (mirror unit)
- #01-15
- #01-16 (mirror unit)
- #01-17



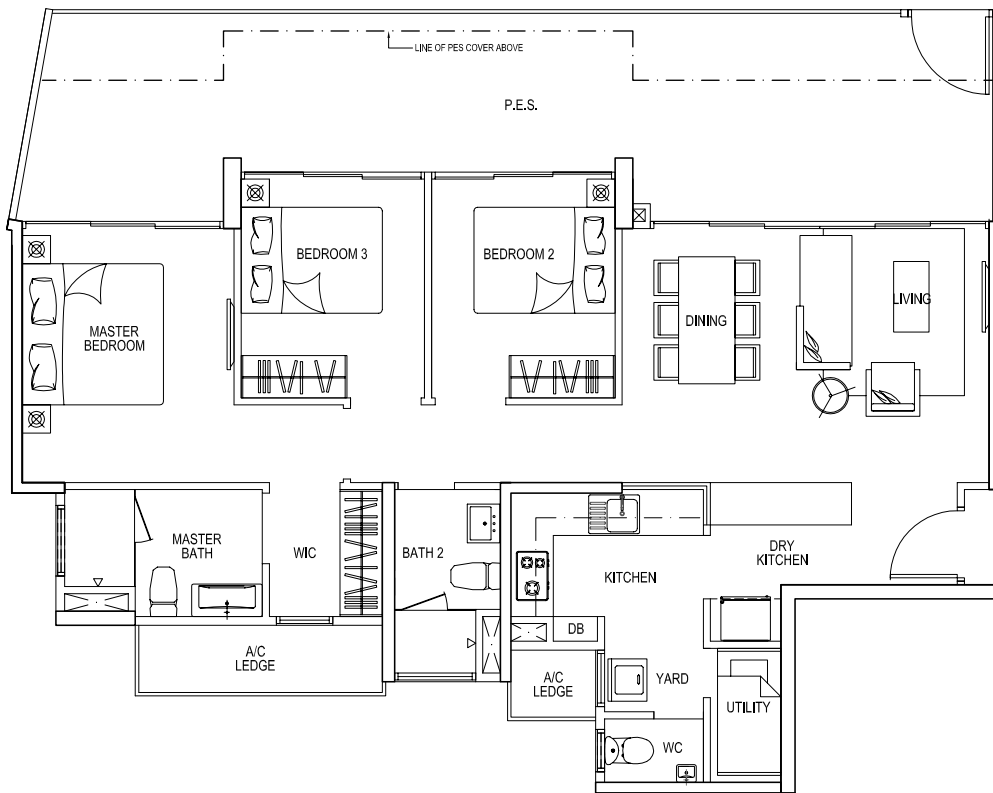
Areas includes A/C ledge, balcony, open balcony, raised planter, PES, open roof terrace and void (where applicable). Orientations and facings will differ depending on the unit you are purchasing. Please refer to the key plan. All plans are not to scale and are subject to changes as may be approved by the relevant authorities. All floor areas are estimates and are subject to final survey.

Type C2p-a

129 sqm / 1,389 sqft

#01-12

#01-18

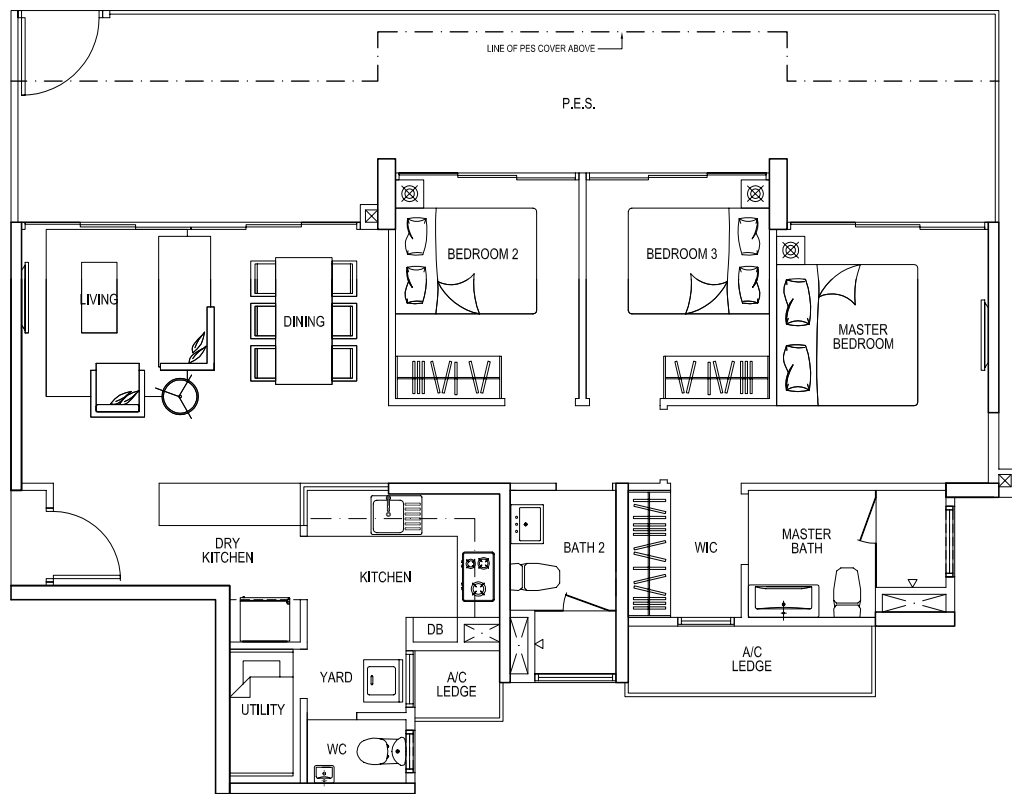


Areas includes A/C ledge, balcony, open balcony, raised planter, PES, open roof terrace and void (where applicable). Orientations and facings will differ depending on the unit you are purchasing. Please refer to the key plan. All plans are not to scale and are subject to changes as may be approved by the relevant authorities. All floor areas are estimates and are subject to final survey.

Type C2ap

130 sqm / 1,399 sqft

#01-11

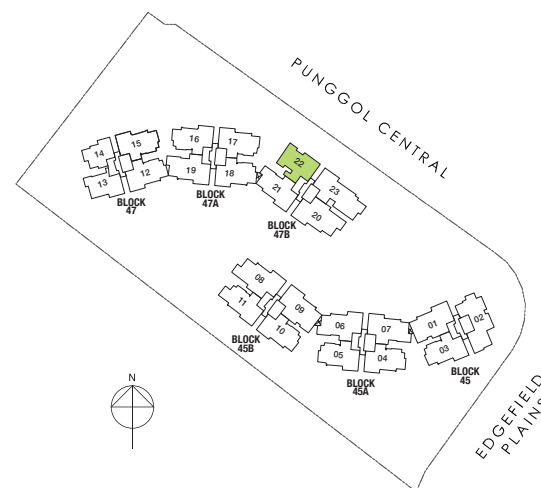
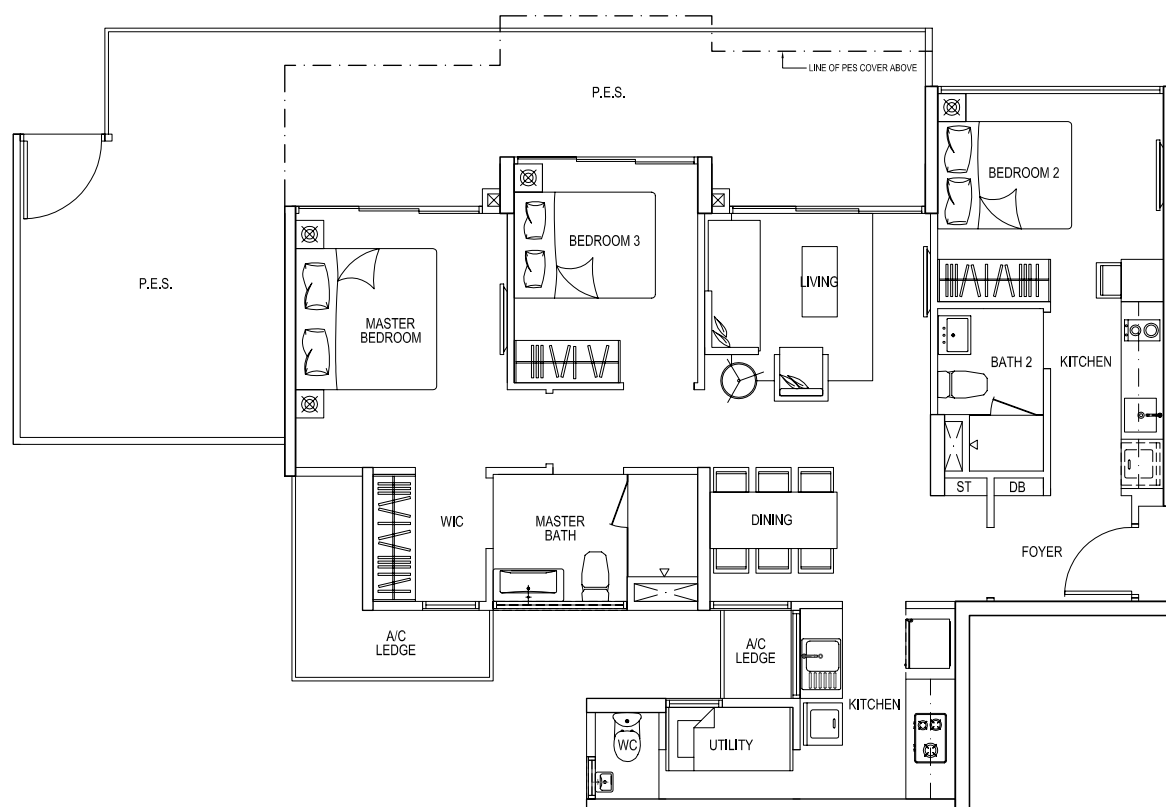


Areas includes A/C ledge, balcony, open balcony, raised planter, PES, open roof terrace and void (where applicable). Orientations and facings will differ depending on the unit you are purchasing. Please refer to the key plan. All plans are not to scale and are subject to changes as may be approved by the relevant authorities. All floor areas are estimates and are subject to final survey.

Type C3(DK)p

133 sqm / 1,432 sqft

#01-22

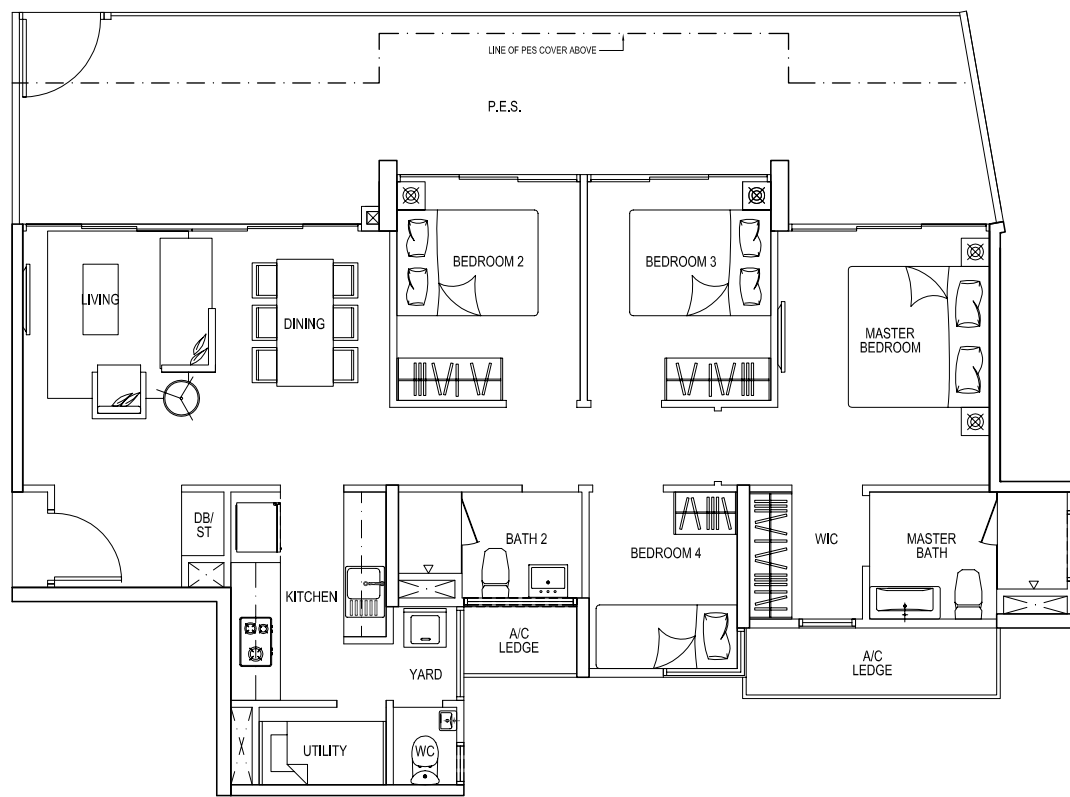


Areas includes A/C ledge, balcony, open balcony, raised planter, PES, open roof terrace and void (where applicable). Orientations and facings will differ depending on the unit you are purchasing. Please refer to the key plan. All plans are not to scale and are subject to changes as may be approved by the relevant authorities. All floor areas are estimates and are subject to final survey.

Type D1p

133 sqm / 1,432 sqft

- #01-06 (mirror unit)
- #01-19
- #01-21



Areas includes A/C ledge, balcony, open balcony, raised planter, PES, open roof terrace and void (where applicable). Orientations and facings will differ depending on the unit you are purchasing. Please refer to the key plan. All plans are not to scale and are subject to changes as may be approved by the relevant authorities. All floor areas are estimates and are subject to final survey.

PES

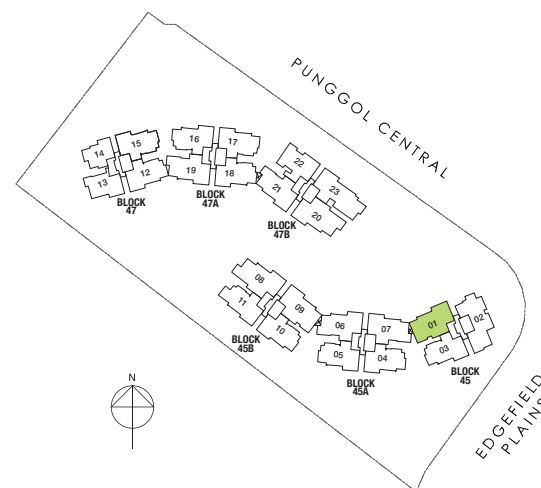
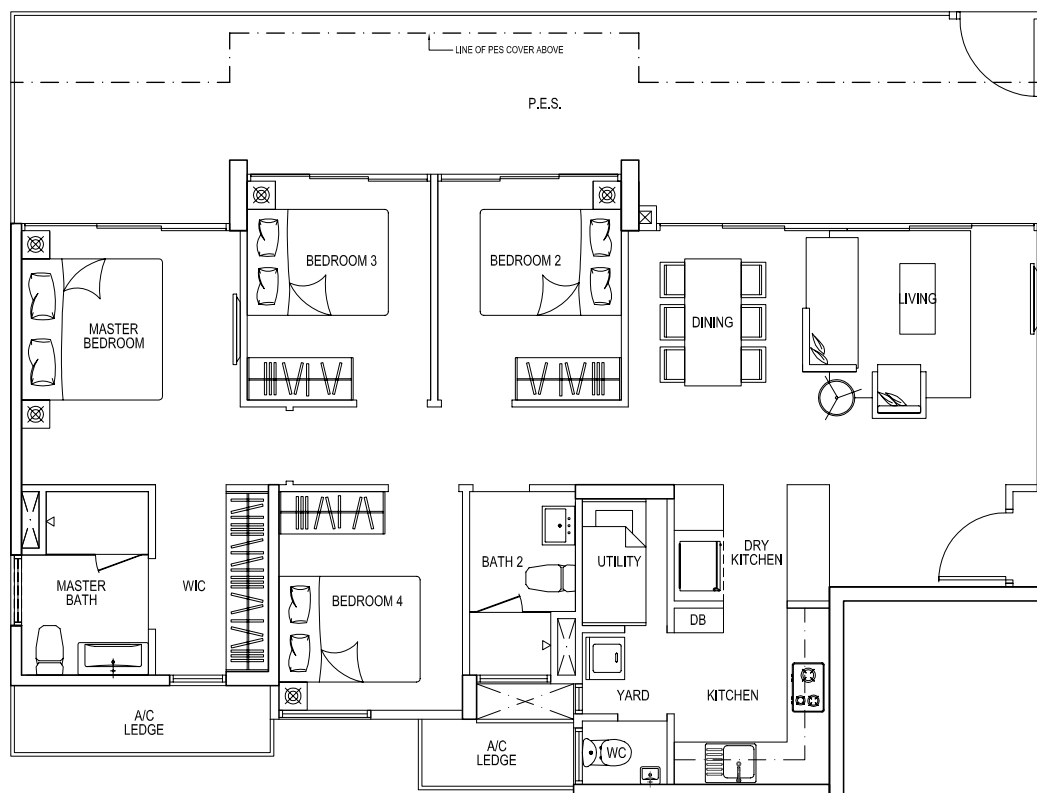
4

BEDROOM

### Type D2p

145 sqm / 1,561 sqft

#01-01



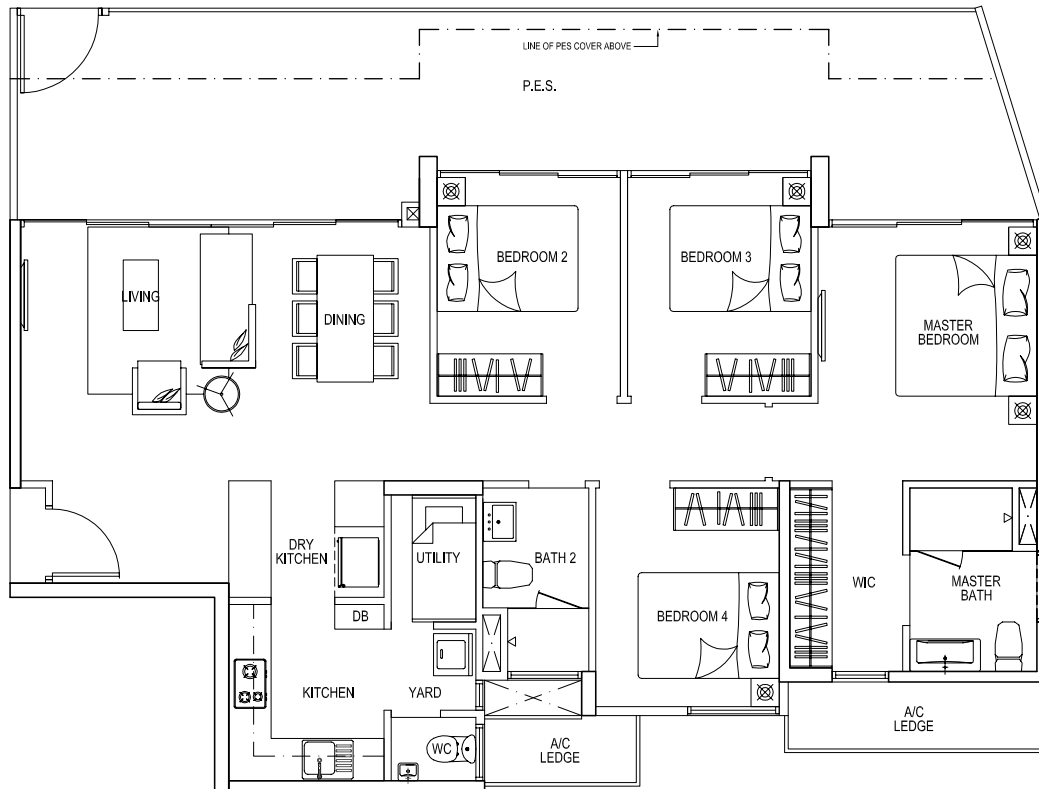
Areas includes A/C ledge, balcony, open balcony, raised planter, PES, open roof terrace and void (where applicable). Orientations and facings will differ depending on the unit you are purchasing. Please refer to the key plan. All plans are not to scale and are subject to changes as may be approved by the relevant authorities. All floor areas are estimates and are subject to final survey.



### Type D2p-a

144 sqm / 1,550 sqft

#01-09

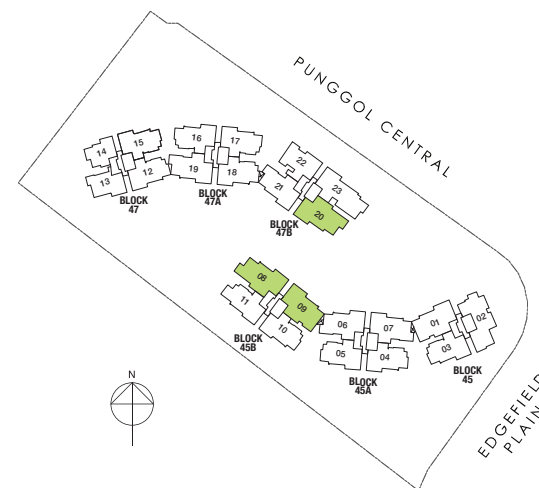
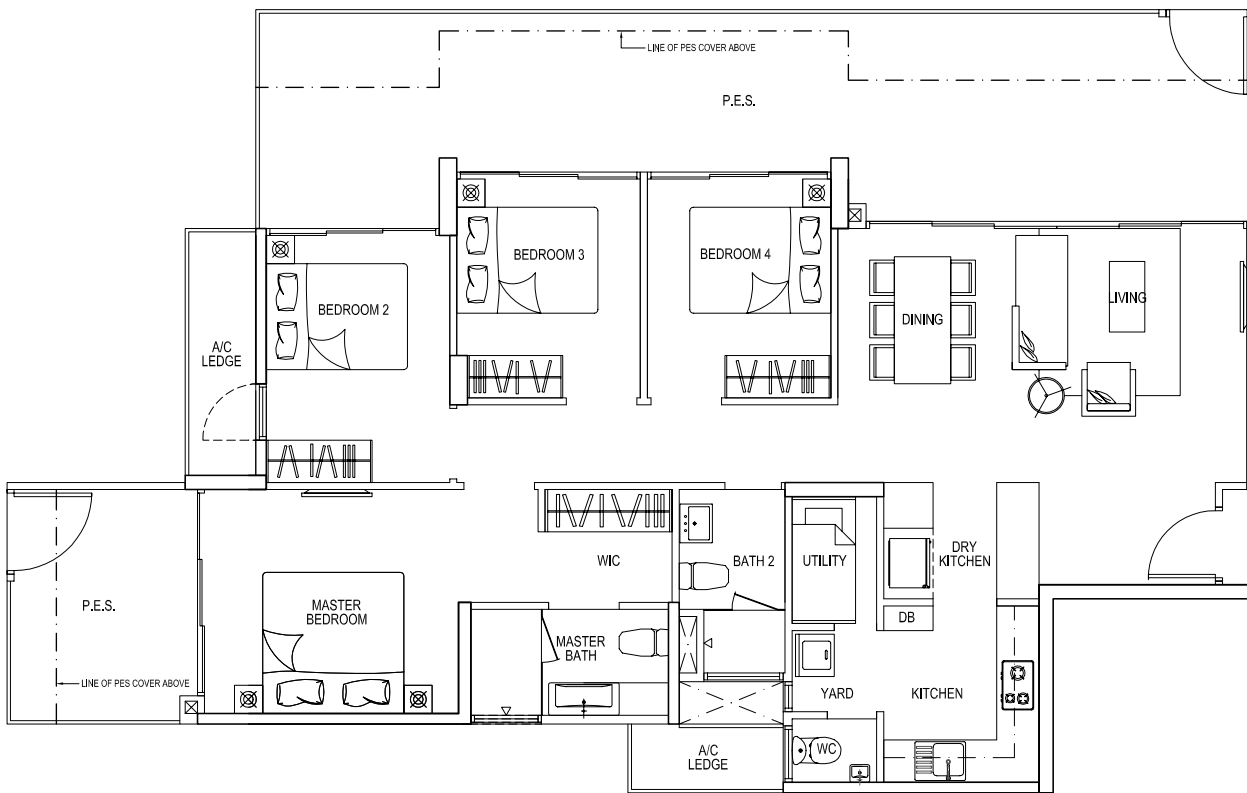


### Type D3p

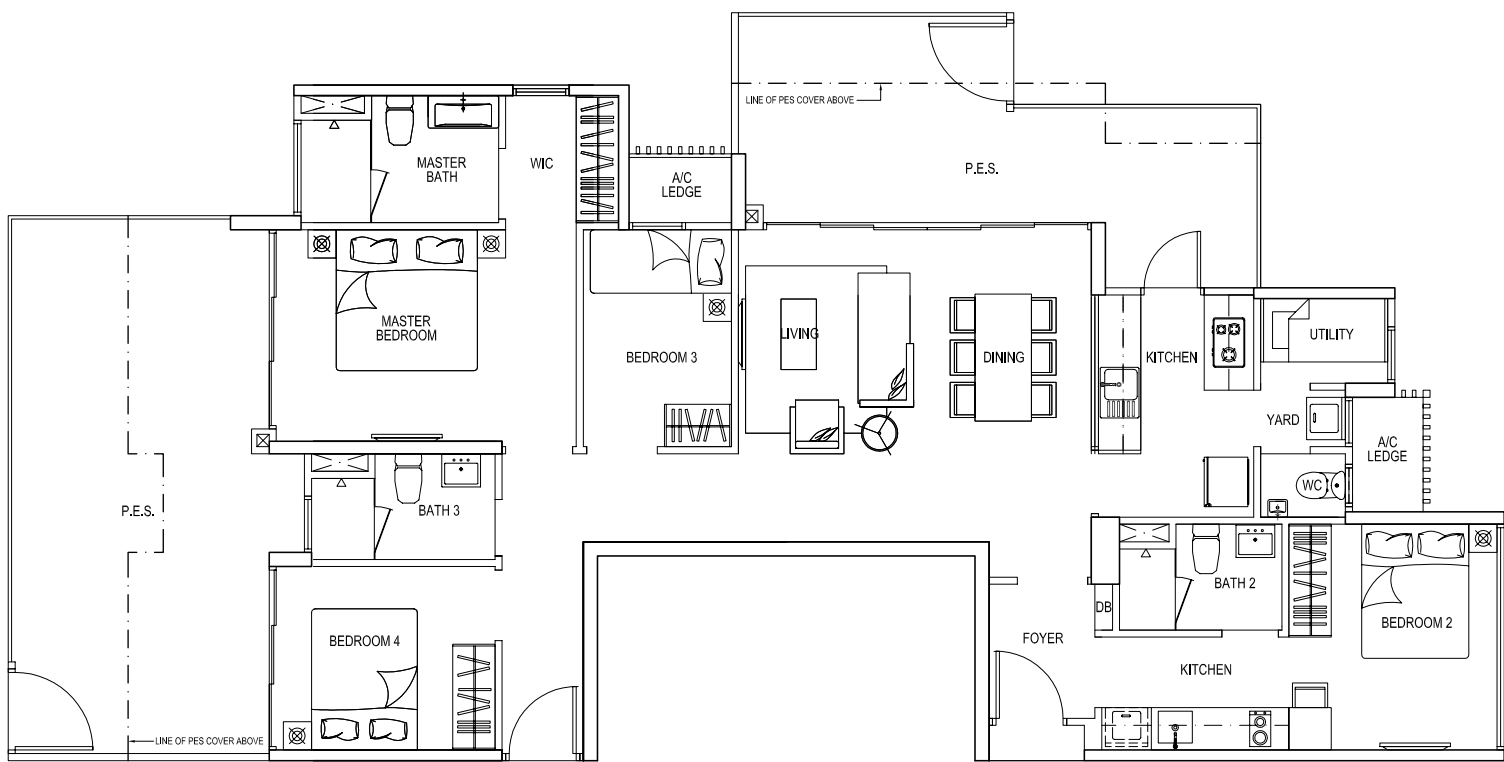
156 sqm / 1,679 sqft

#01-08

#01-20



Areas includes A/C ledge, balcony, open balcony, raised planter, PES, open roof terrace and void (where applicable). Orientations and facings will differ depending on the unit you are purchasing. Please refer to the key plan. All plans are not to scale and are subject to changes as may be approved by the relevant authorities. All floor areas are estimates and are subject to final survey.



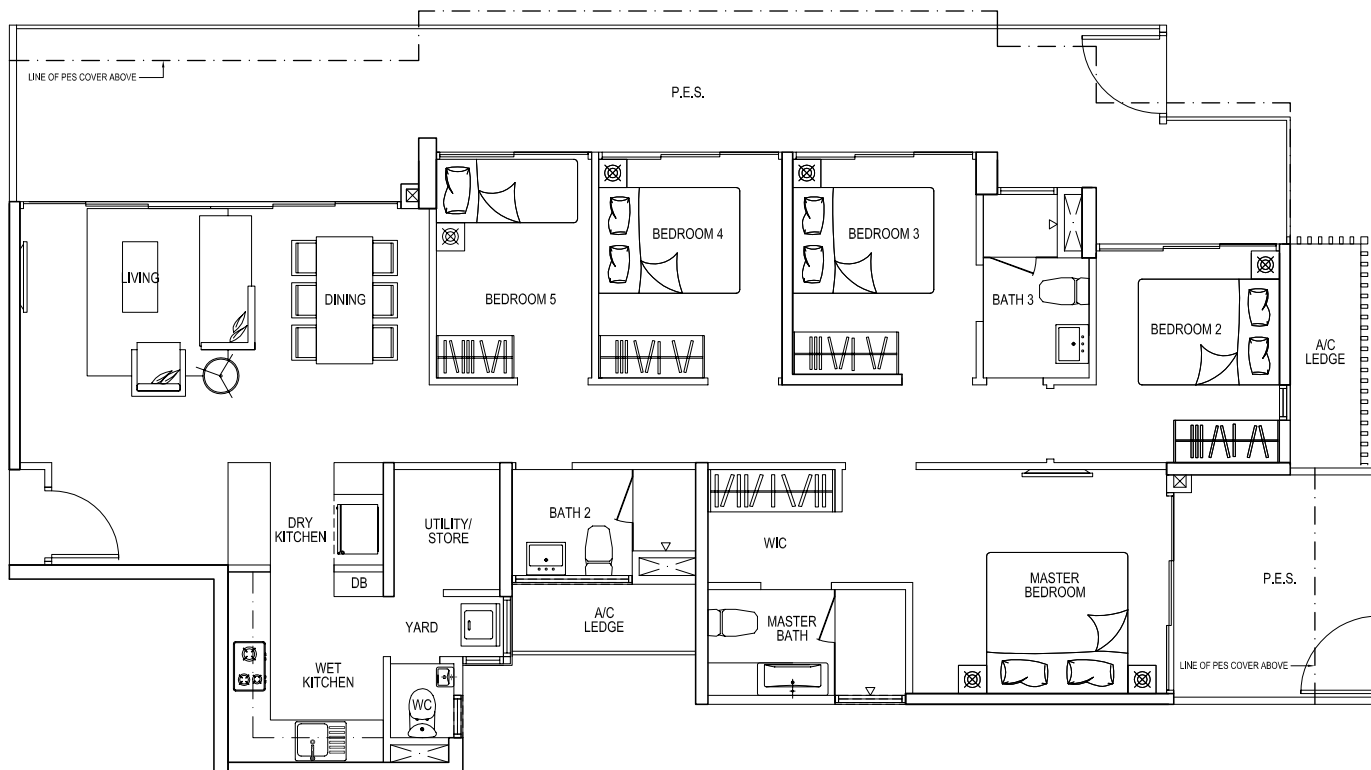
Type D4(DK)p

162 sqm / 1,744 sqft

#01-02



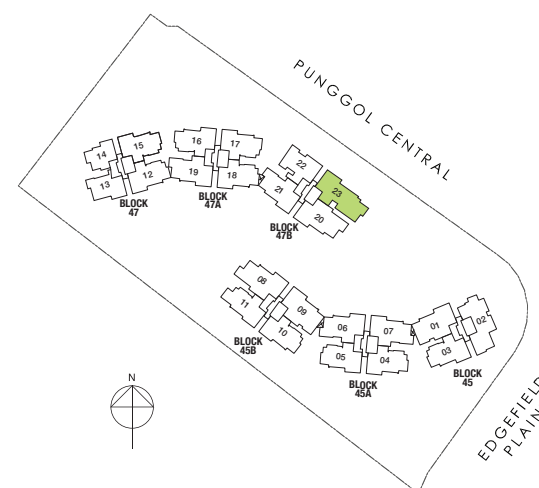
Areas includes A/C ledge, balcony, open balcony, raised planter, PES, open roof terrace and void (where applicable). Orientations and facings will differ depending on the unit you are purchasing. Please refer to the key plan. All plans are not to scale and are subject to changes as may be approved by the relevant authorities. All floor areas are estimates and are subject to final survey.



### Type E1p

171 sqm / 1,841 sqft

#01-23

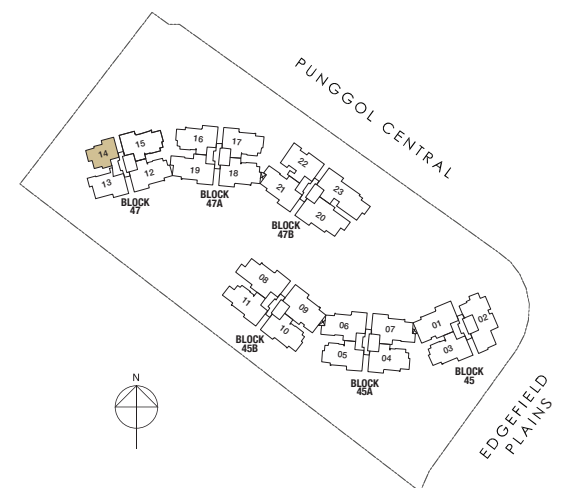
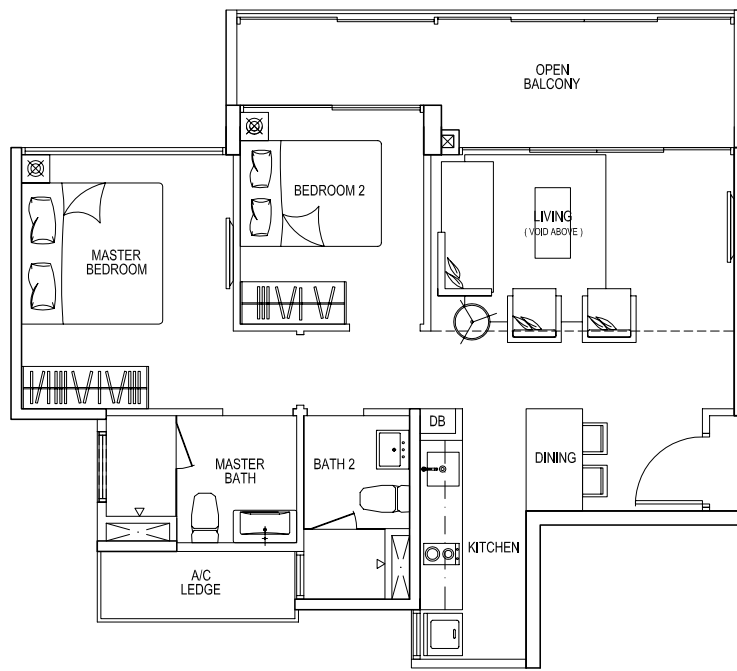


Areas includes A/C ledge, balcony, open balcony, raised planter, PES, open roof terrace and void (where applicable). Orientations and facings will differ depending on the unit you are purchasing. Please refer to the key plan. All plans are not to scale and are subject to changes as may be approved by the relevant authorities. All floor areas are estimates and are subject to final survey.

Type B1T

86 sqm / 926 sqft

#17-14

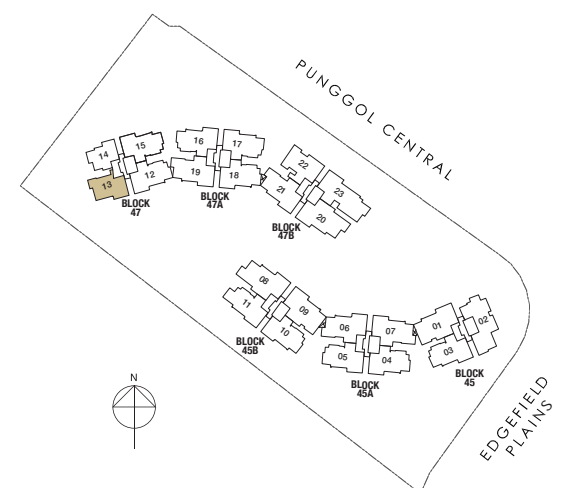
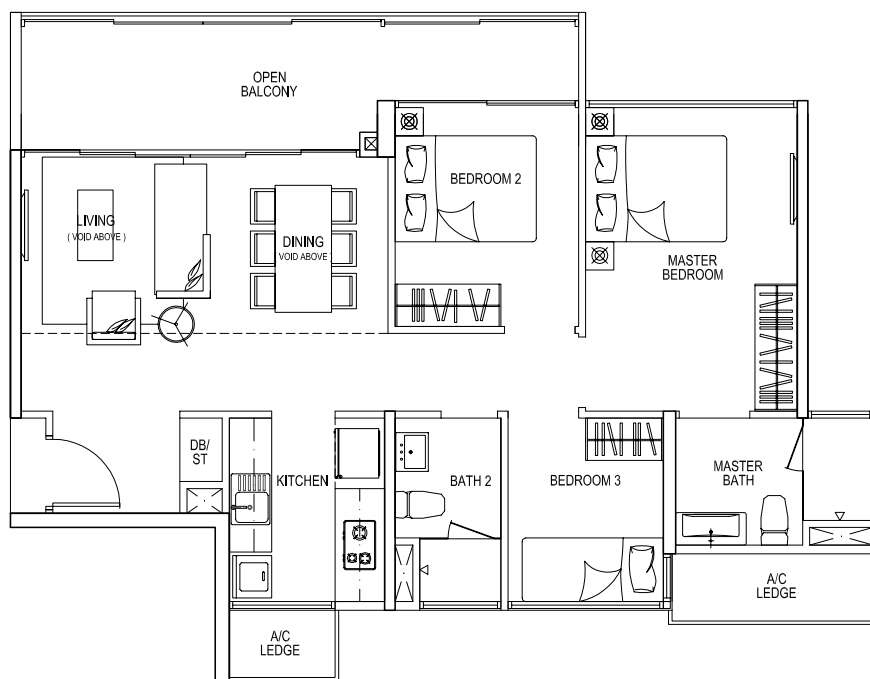


Areas includes A/C ledge, balcony, open balcony, raised planter, PES, open roof terrace and void (where applicable). Orientations and facings will differ depending on the unit you are purchasing. Please refer to the key plan. All plans are not to scale and are subject to changes as may be approved by the relevant authorities. All floor areas are estimates and are subject to final survey.

Type C1T

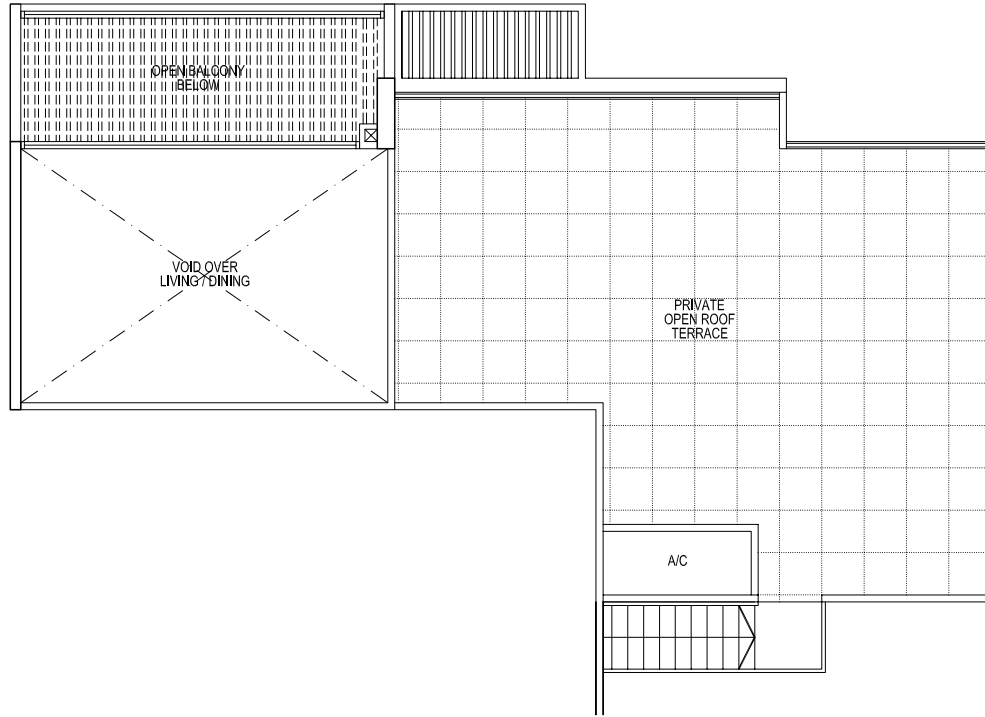
104 sqm / 1,119 sqft

#17-13

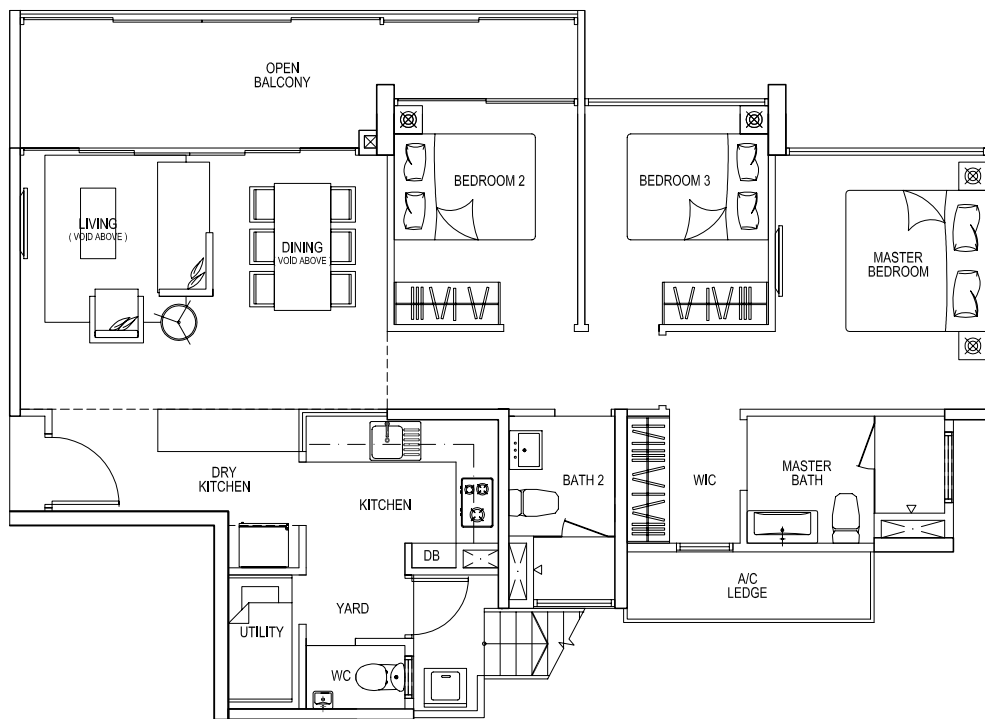


Areas includes A/C ledge, balcony, open balcony, raised planter, PES, open roof terrace and void (where applicable). Orientations and facings will differ depending on the unit you are purchasing. Please refer to the key plan. All plans are not to scale and are subject to changes as may be approved by the relevant authorities. All floor areas are estimates and are subject to final survey.

PENTHOUSE  
**3**  
 BEDROOM



Upper Storey

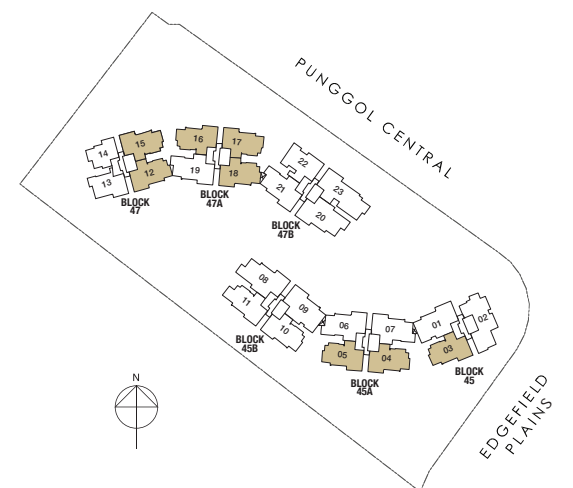


Lower Storey

Type C2R

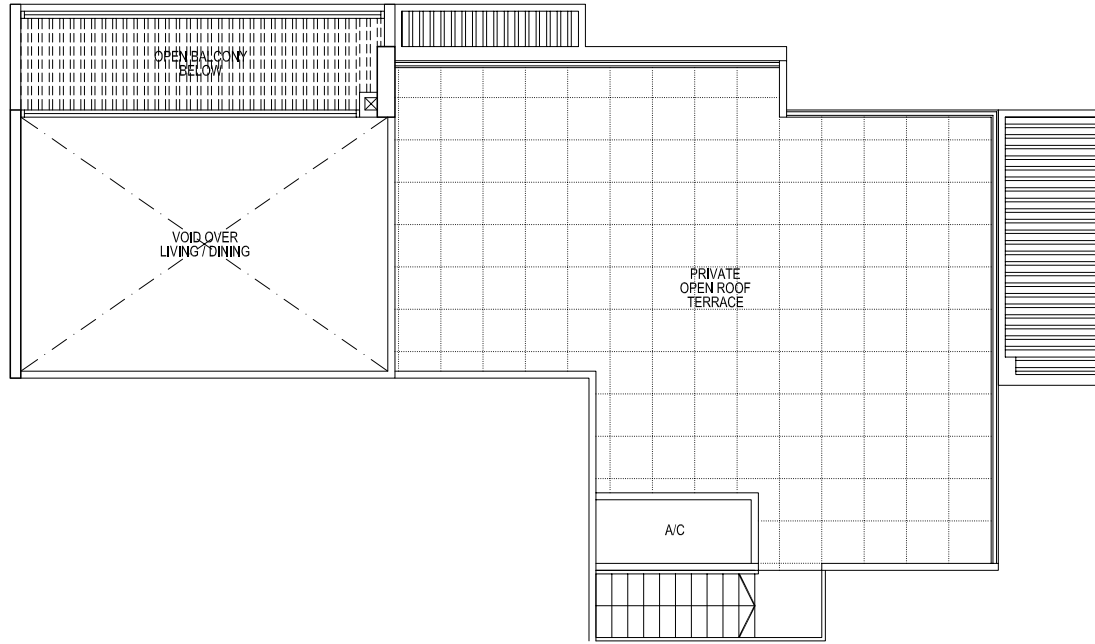
182 sqm / 1,959 sqft

- #17-03
- #17-04 (mirror unit)
- #17-05
- #17-12 (mirror unit)
- #17-15
- #17-16 (mirror unit)
- #17-17
- #17-18 (mirror unit)

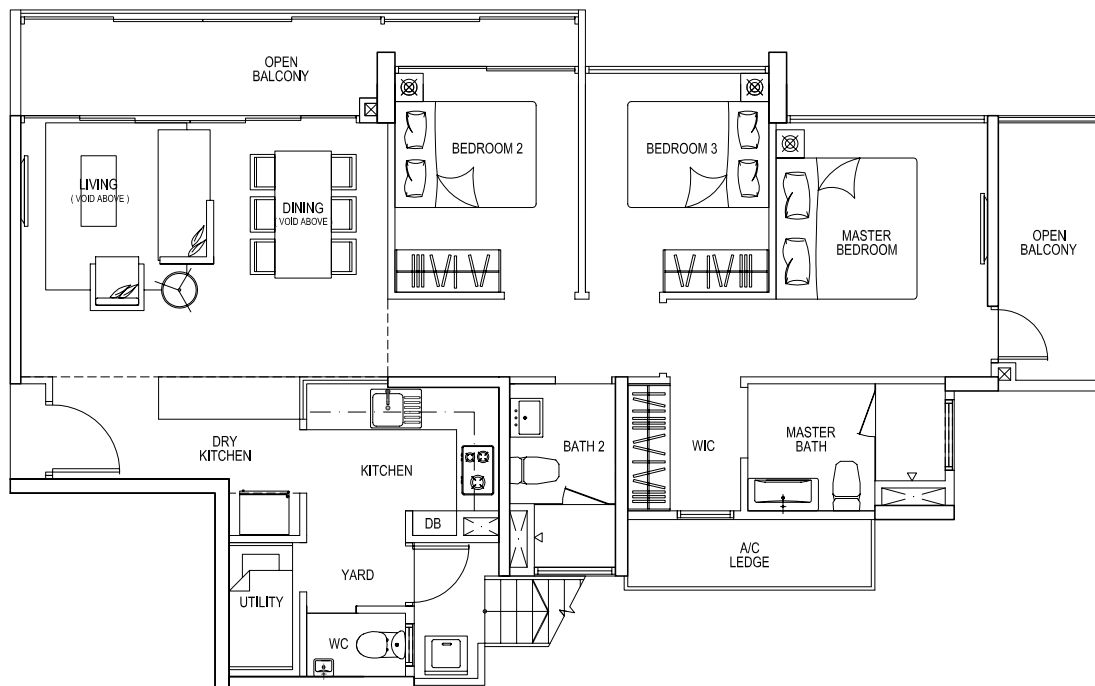


Areas includes A/C ledge, balcony, open balcony, raised planter, PES, open roof terrace and void (where applicable). Orientations and facings will differ depending on the unit you are purchasing. Please refer to the key plan. All plans are not to scale and are subject to changes as may be approved by the relevant authorities. All floor areas are estimates and are subject to final survey.

PENTHOUSE  
**3**  
 BEDROOM



Upper Storey

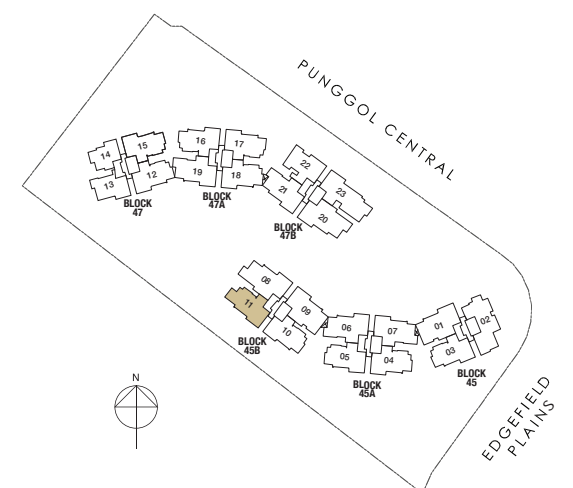


Lower Storey

Type C2aR

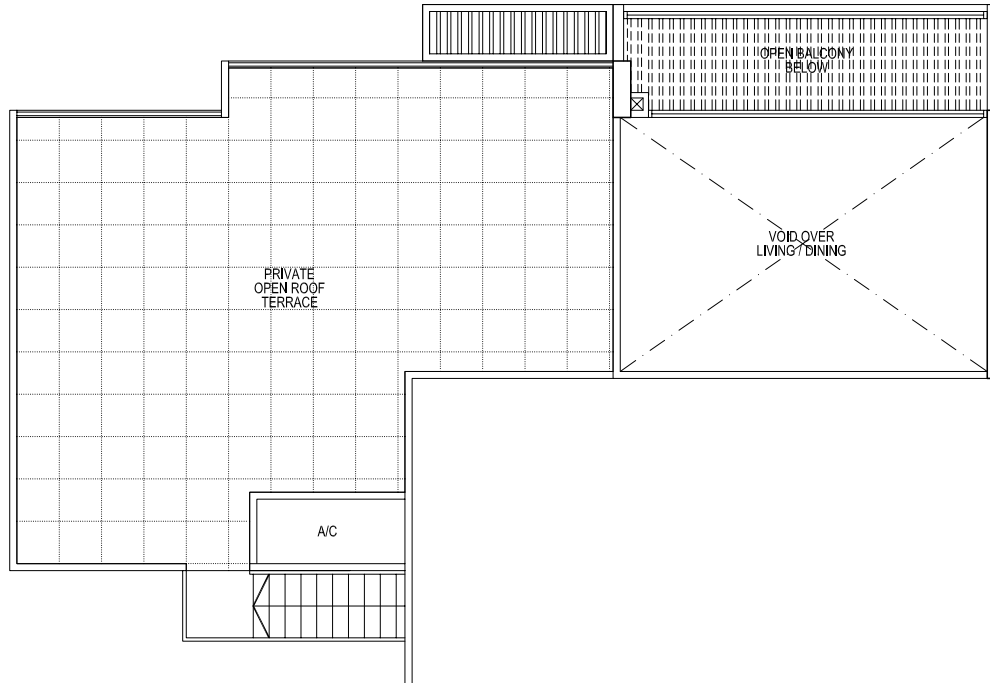
184 sqm / 1,981 sqft

#17-11



Areas includes A/C ledge, balcony, open balcony, raised planter, PES, open roof terrace and void (where applicable). Orientations and facings will differ depending on the unit you are purchasing. Please refer to the key plan. All plans are not to scale and are subject to changes as may be approved by the relevant authorities. All floor areas are estimates and are subject to final survey.

PENTHOUSE  
**3**  
 BEDROOM



Upper Storey

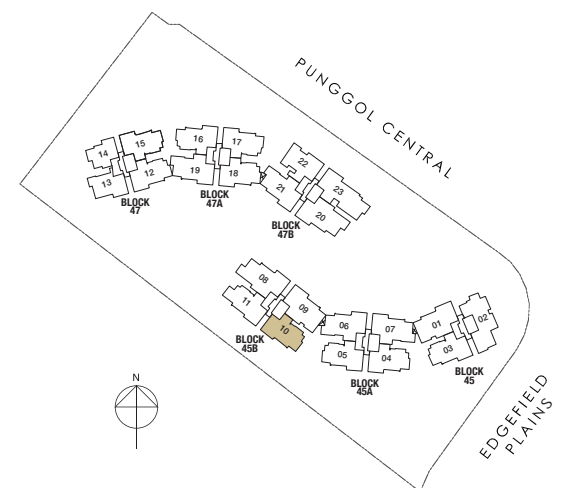


Lower Storey

Type C2bR

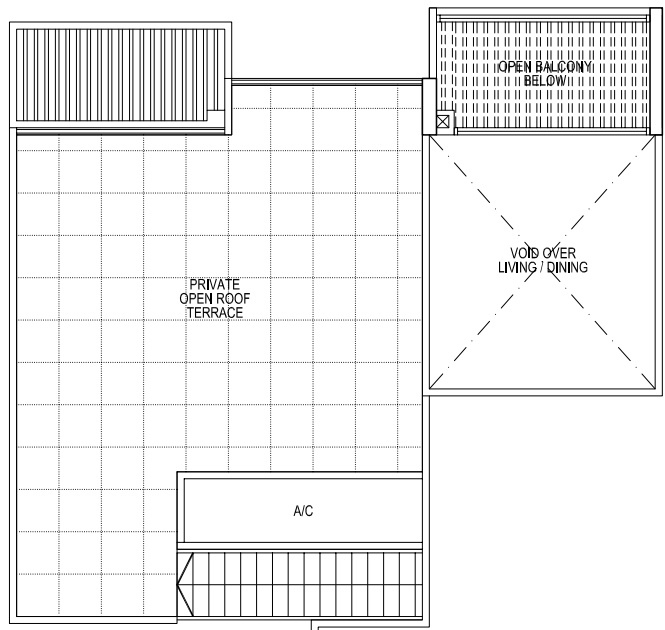
178 sqm / 1,916 sqft

#17-10

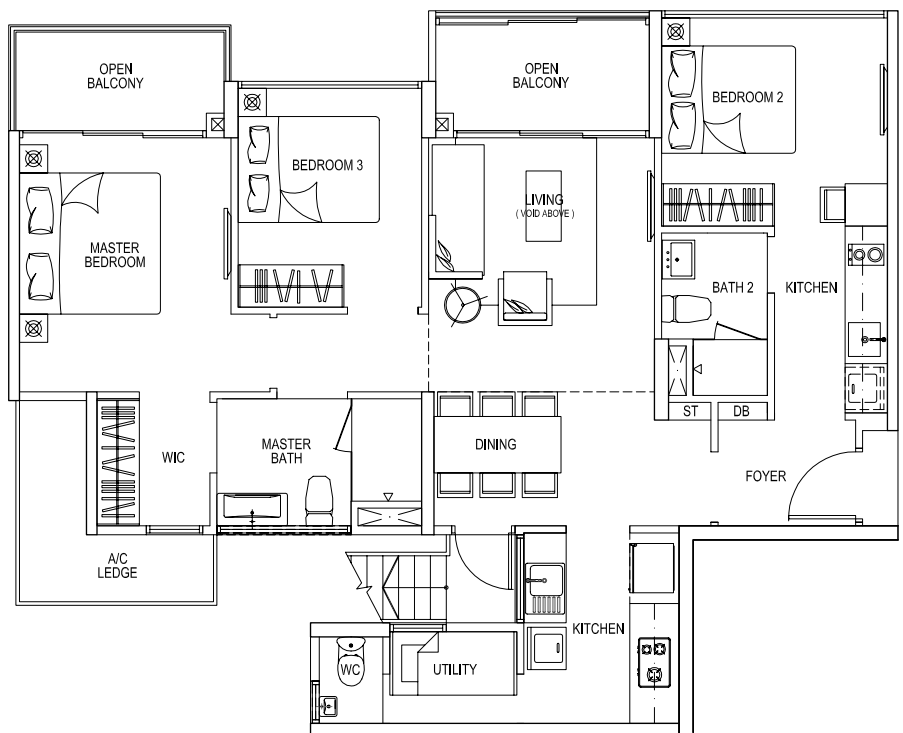


Areas includes A/C ledge, balcony, open balcony, raised planter, PES, open roof terrace and void (where applicable). Orientations and facings will differ depending on the unit you are purchasing. Please refer to the key plan. All plans are not to scale and are subject to changes as may be approved by the relevant authorities. All floor areas are estimates and are subject to final survey.





Upper Storey

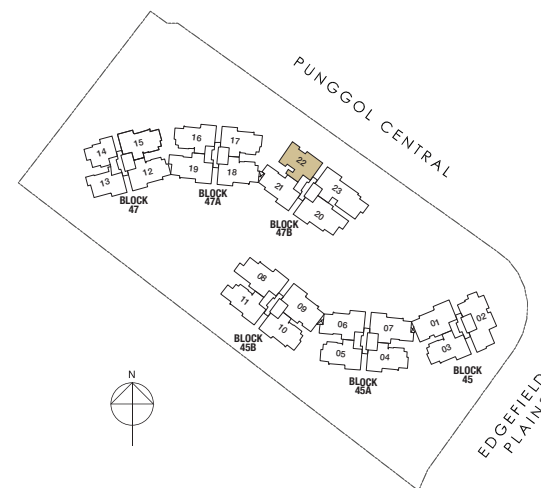


Lower Storey

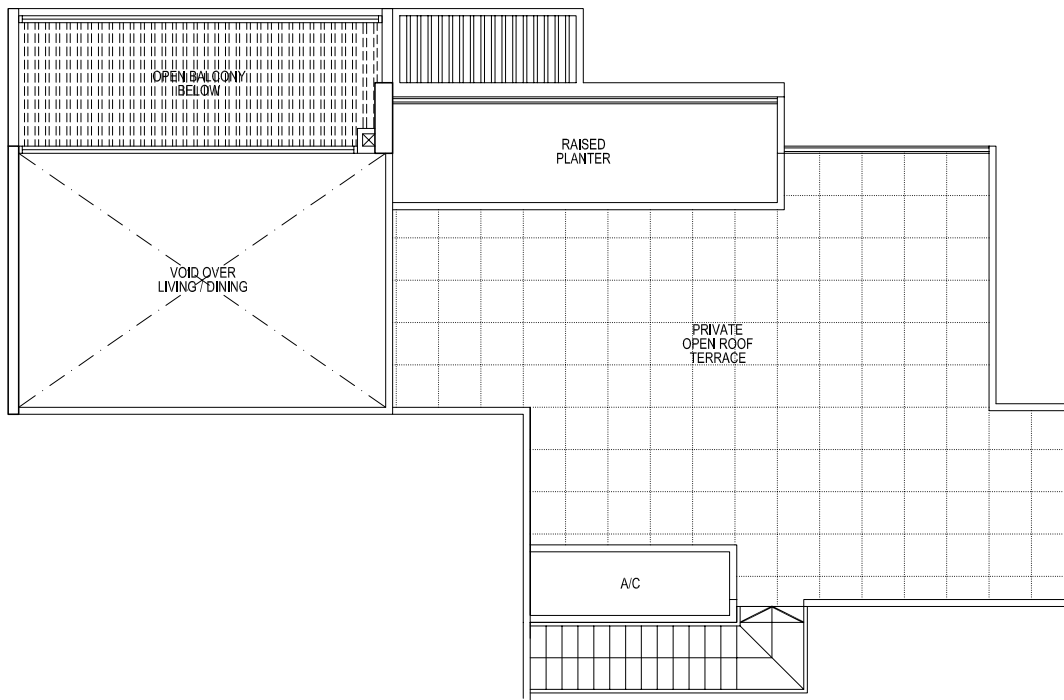
Type C3(DK)R

157 sqm / 1,690 sqft

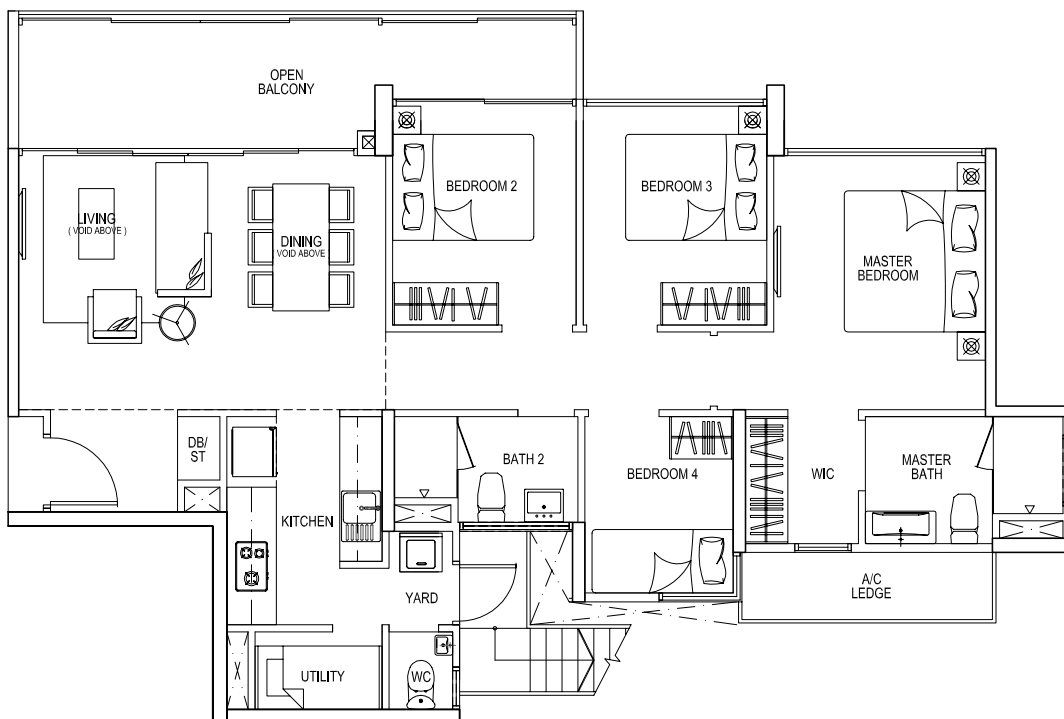
#17-22



Areas includes A/C ledge, balcony, open balcony, raised planter, PES, open roof terrace and void (where applicable). Orientations and facings will differ depending on the unit you are purchasing. Please refer to the key plan. All plans are not to scale and are subject to changes as may be approved by the relevant authorities. All floor areas are estimates and are subject to final survey.



Upper Storey

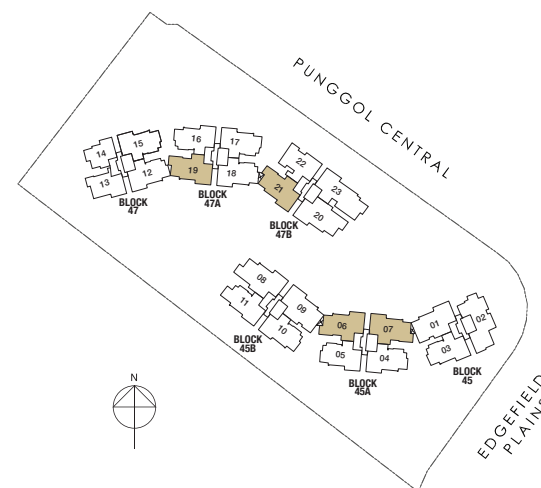


Lower Storey

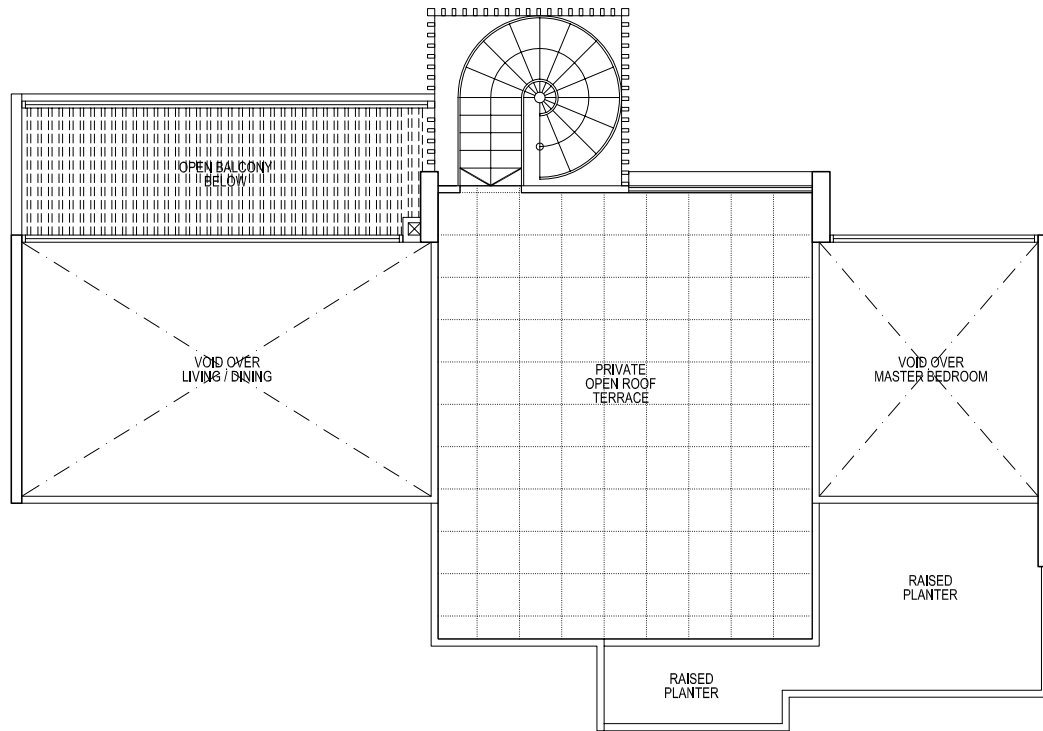
Type D1R

191 sqm / 2,056 sqft

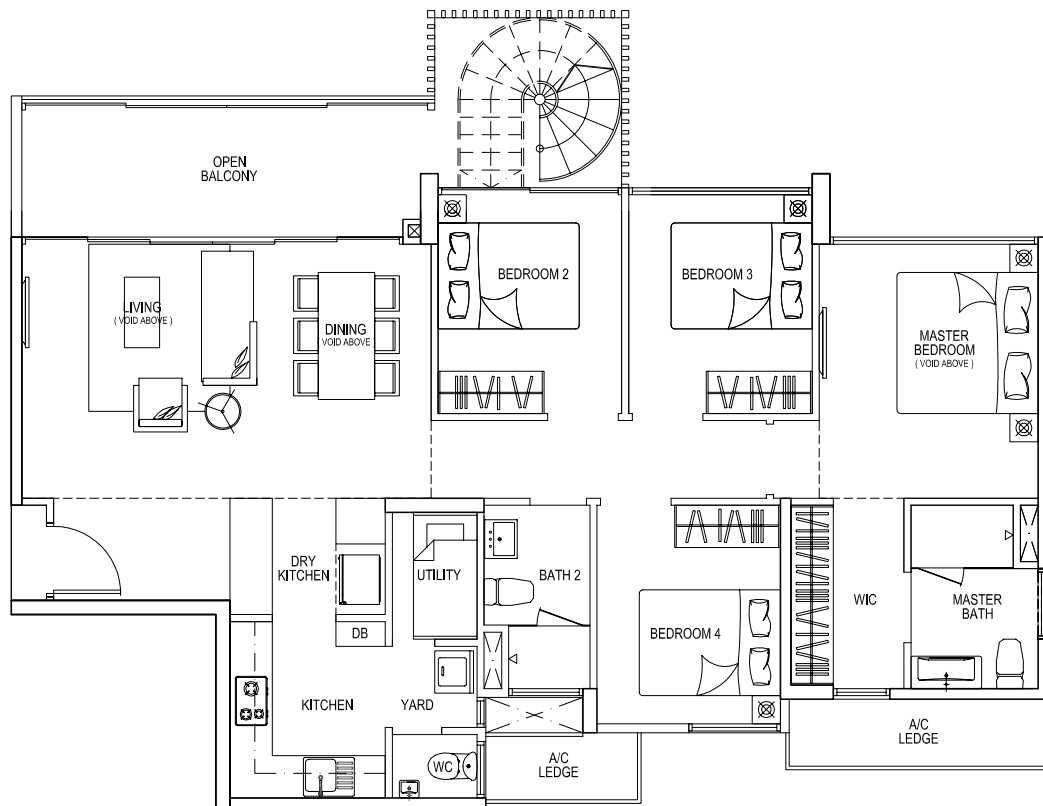
- #17-06 (mirror unit)
- #17-07
- #17-19
- #17-21



Areas includes A/C ledge, balcony, open balcony, raised planter, PES, open roof terrace and void (where applicable). Orientations and facings will differ depending on the unit you are purchasing. Please refer to the key plan. All plans are not to scale and are subject to changes as may be approved by the relevant authorities. All floor areas are estimates and are subject to final survey.



Upper Storey

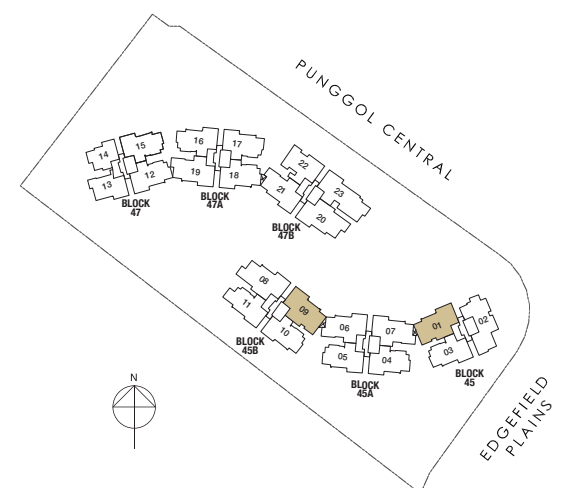


Lower Storey

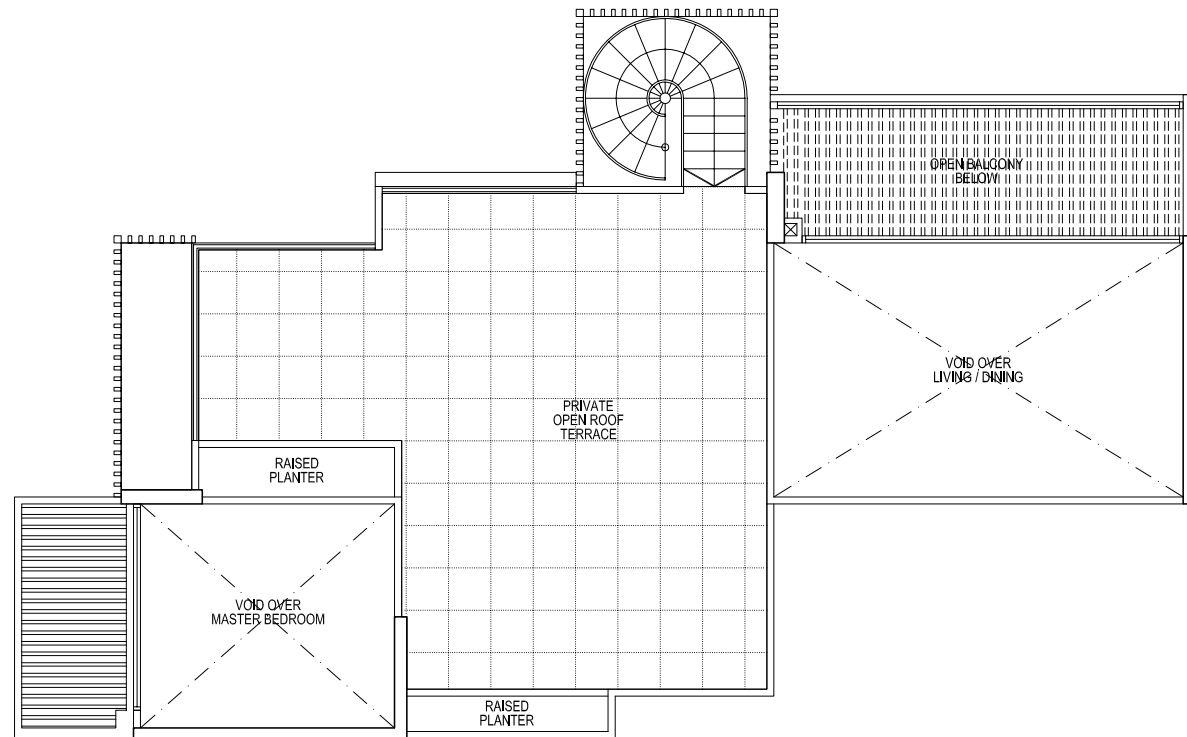
Type D2R

206 sqm / 2,217 sqft

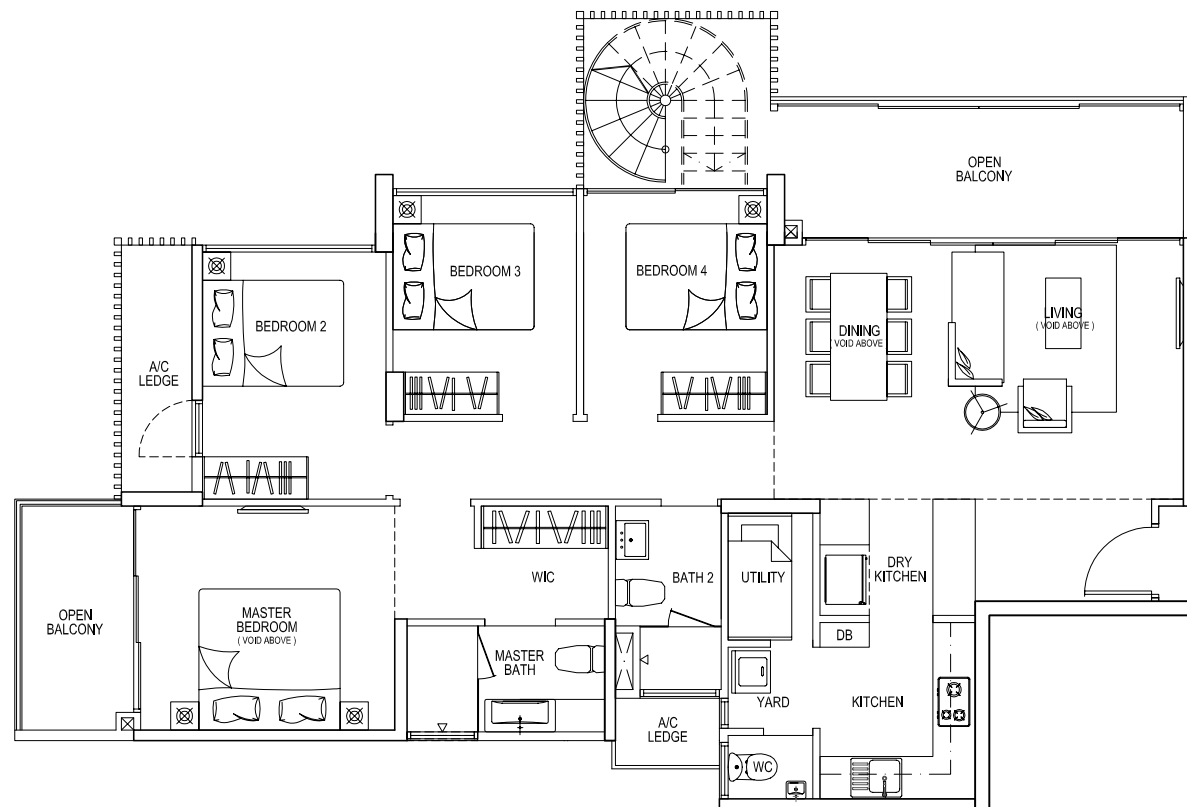
#17-01 (mirror unit)  
#17-09



Areas includes A/C ledge, balcony, open balcony, raised planter, PES, open roof terrace and void (where applicable). Orientations and facings will differ depending on the unit you are purchasing. Please refer to the key plan. All plans are not to scale and are subject to changes as may be approved by the relevant authorities. All floor areas are estimates and are subject to final survey.



Upper Storey

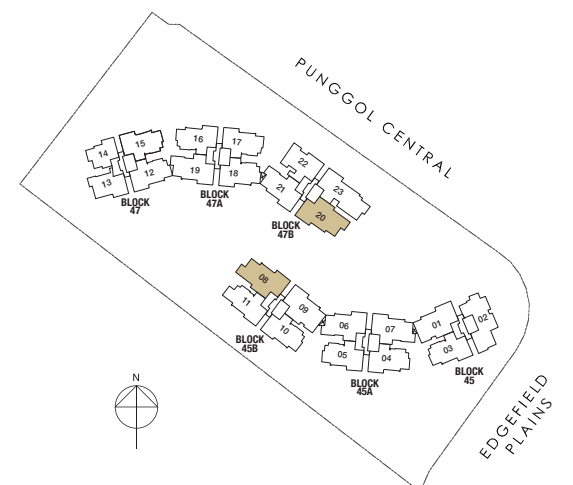


Lower Storey

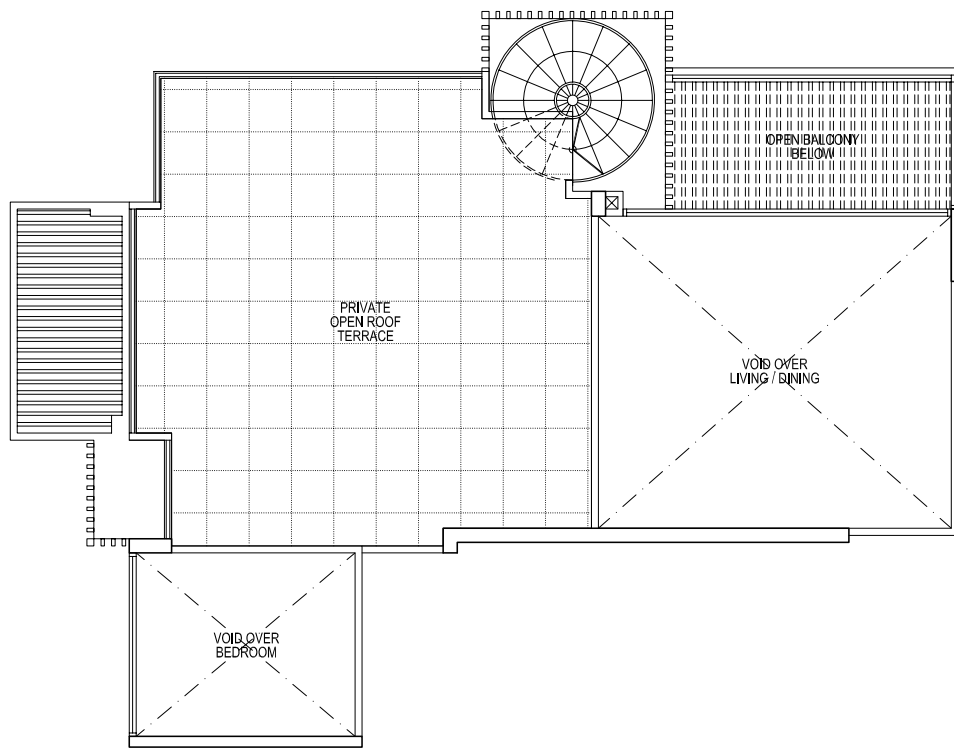
Type D3R

214 sqm / 2,303 sqft

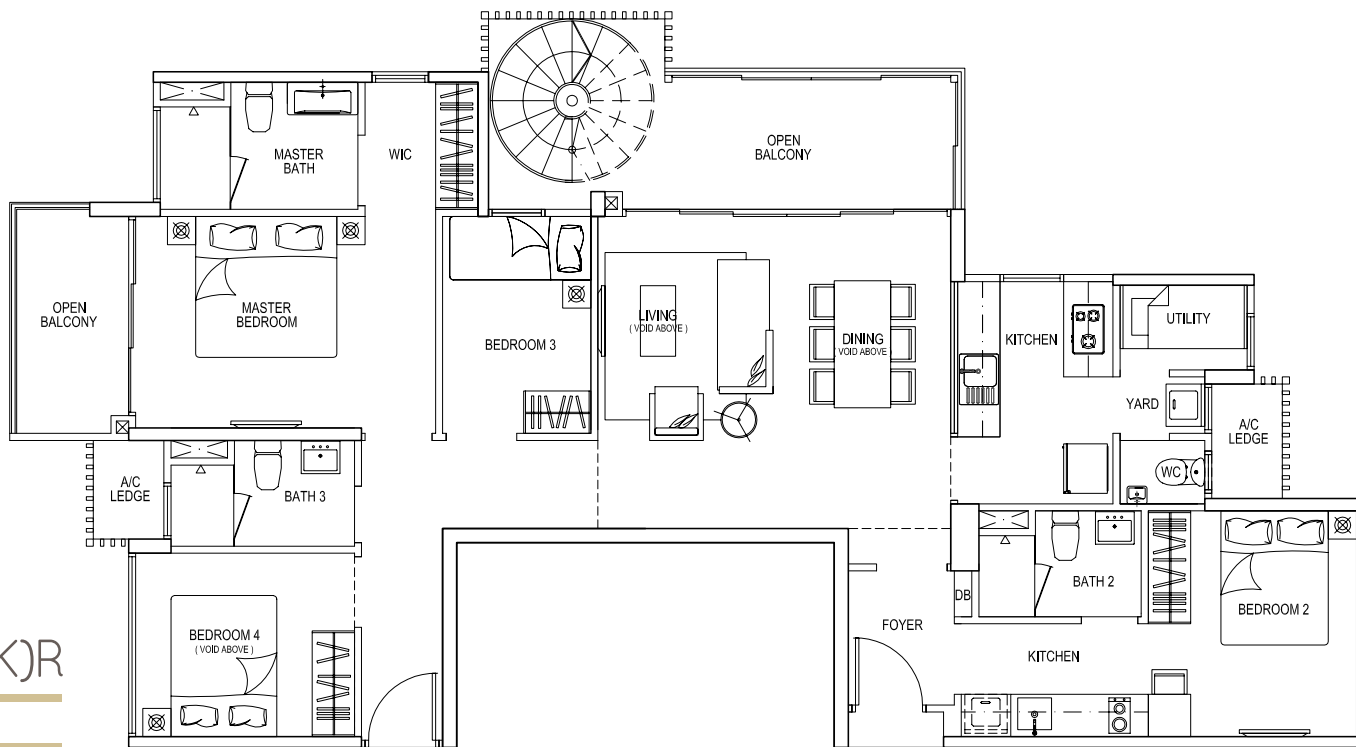
#17-08  
#17-20



Areas includes A/C ledge, balcony, open balcony, raised planter, PES, open roof terrace and void (where applicable). Orientations and facings will differ depending on the unit you are purchasing. Please refer to the key plan. All plans are not to scale and are subject to changes as may be approved by the relevant authorities. All floor areas are estimates and are subject to final survey.



Upper Storey

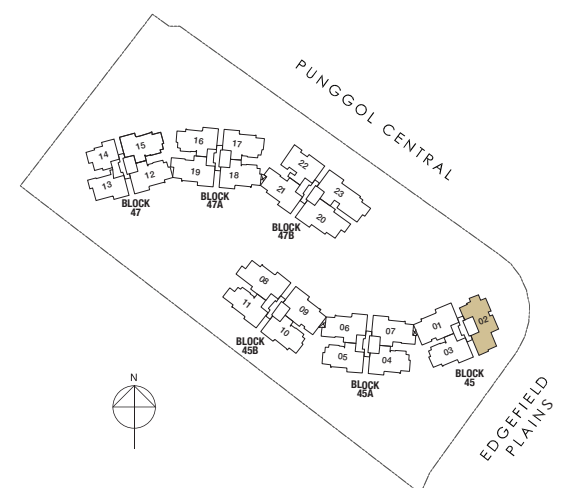


Lower Storey

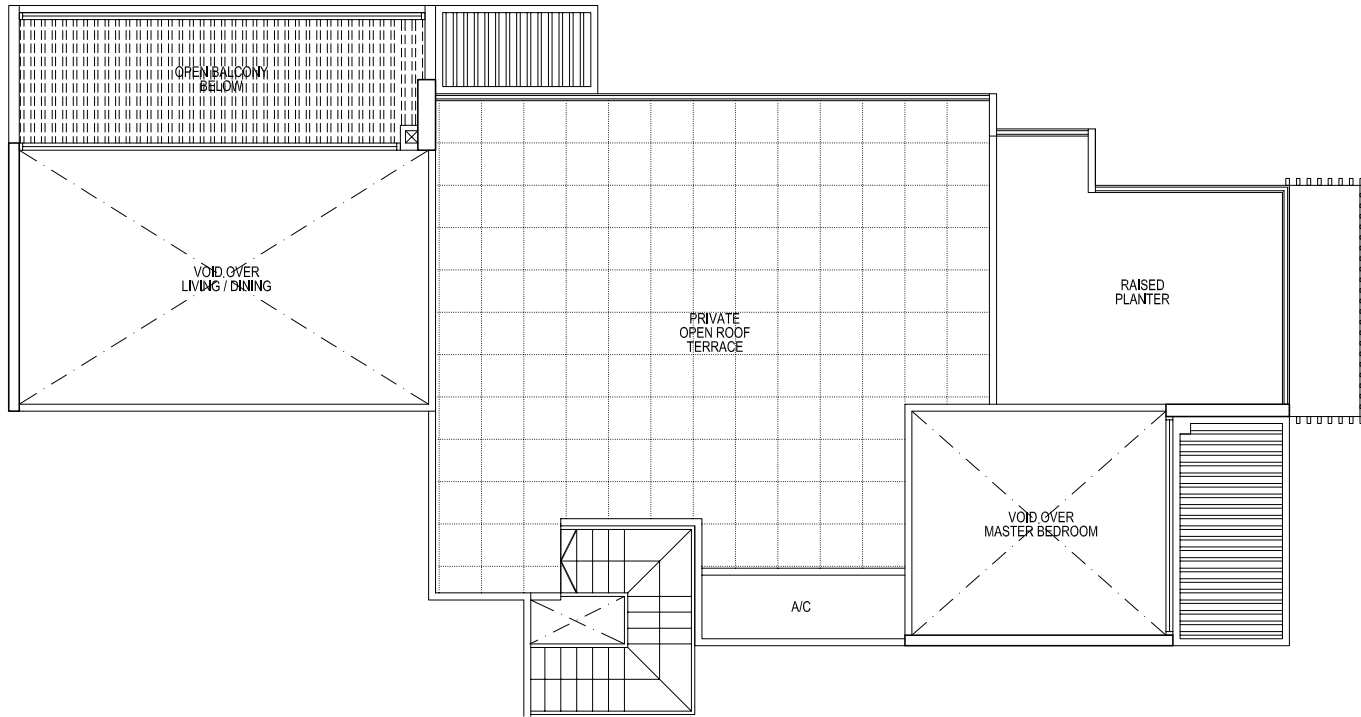
Type D4(DK)R

208 sqm / 2,239 sqft

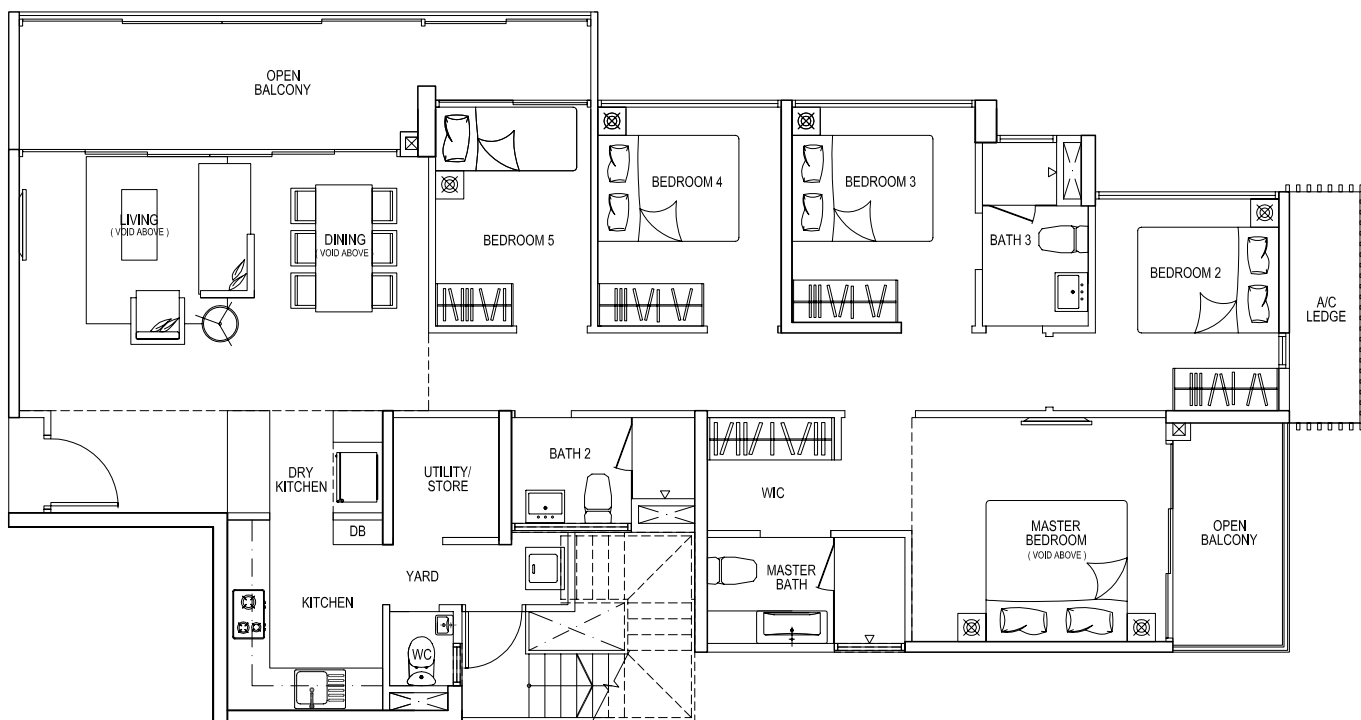
#17-02



Areas includes A/C ledge, balcony, open balcony, raised planter, PES, open roof terrace and void (where applicable). Orientations and facings will differ depending on the unit you are purchasing. Please refer to the key plan. All plans are not to scale and are subject to changes as may be approved by the relevant authorities. All floor areas are estimates and are subject to final survey.



Upper Storey

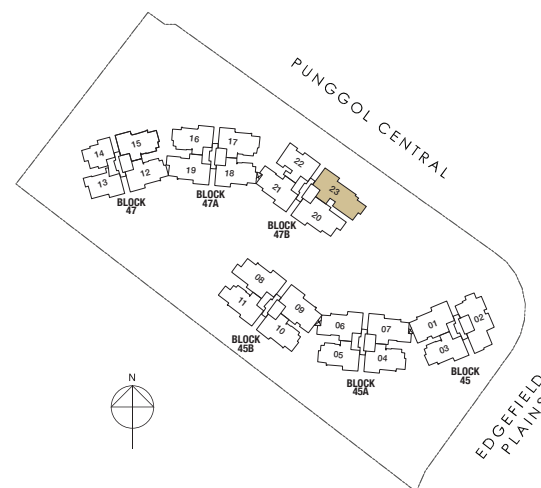


Lower Storey

### Type E1R

248 sqm / 2,669 sqft

#17-23



Areas includes A/C ledge, balcony, open balcony, raised planter, PES, open roof terrace and void (where applicable). Orientations and facings will differ depending on the unit you are purchasing. Please refer to the key plan. All plans are not to scale and are subject to changes as may be approved by the relevant authorities. All floor areas are estimates and are subject to final survey.