

UNIT DISTRIBUTION CHART

	01	02	03	04
12th	PH B7	A2	PH B3	PH D3
11th	B7	A2	B3	D3
10th	B7	A2	B3	D3
9th	B7	A2	B3	D3
8th	B7-a	A2	B3	D3-a
7th	B7-a	A2	B3	D3-a
6th	B7-a	A2	B3	D3-a
5th	B7-a	A2	B3	D3-a
4th	B7	A2	B3	D3
3th	B7	A2	B3	D3
2th	B7	A2	B3	D3
1th	B1d	A1b	B1b	D1b

BLOCK 71

	05	06	07	08
12th	B5	PH C6	PH D2	PH B6
11th	B5	C6	D2	B6
10th	B5	C6	D2	B6
9th	B5	C6	D2	B6
8th	B5	C6	D2-a	B6-a
7th	B5	C6	D2-a	B6-a
6th	B5	C6	D2-a	B6-a
5th	B5	C6	D2-a	B6-a
4th	B5	C6	D2	B6
3th	B5	C6	D2	B6
2th	B4	C6	D2	B6
1th	VOID	C1e	D1a	B1c

BLOCK 73

	18	19	20	21	22
12th	PH C2	A3	PH C3	E2	PH B2
11th	C2	A3	C3	E2	B2
10th	C2	A3	C3	E2	B2
9th	C2	A3	C3	E2	B2
8th	C2-a	A3-a	C3	E2-a	B2-a
7th	C2-a	A3-a	C3	E2-a	B2-a
6th	C2-a	A3-a	C3	E2-a	B2-a
5th	C2-a	A3-a	C3	E2-a	B2-a
4th	C2	A3	C3	E2	B2
3th	C2	A3	C3	E2	B2
2th	C2	A3	C3	C8	B2
1th	C1a	A1c	C1b	C1g	B1a

BLOCK 79

	23	24	25	26
12th	A4	PH C4	PH C5	A2
11th	A4	C4	C5	A2
10th	A4	C4	C5	A2
9th	A4	C4	C5	A2
8th	A4-a	C4	C5-a	A2-a
7th	A4-a	C4	C5-a	A2-a
6th	A4-a	C4	C5-a	A2-a
5th	A4-a	C4	C5-a	A2-a
4th	A4	C4	C5	A2
3th	A4	C4	C5	A2
2th	A4	C4	C5	A2
1th	A1d	C1c	C1d	A1a

BLOCK 81

	09	10	11	12
12th	PH B6	PH D2	PH C6	B5
11th	B6	D2	C6	B5
10th	B6	D2	C6	B5
9th	B6	D2	C6	B5
8th	B6-a	D2-a	C6	B5
7th	B6-a	D2-a	C6	B5
6th	B6-a	D2-a	C6	B5
5th	B6-a	D2-a	C6	B5
4th	B6	D2	C6	B5
3th	B6	D2	C6	B5
2th	B6	D2	C6	B4
1th	B1c	D1a	C1e	VOID

BLOCK 75

	13	14	15	16	17
12th	PH B2	E2	PH C3	A3	PH C2
11th	B2	E2	C3	A3	C2
10th	B2	E2	C3	A3	C2
9th	B2	E2	C3	A3	C2
8th	B2-a	E2-a	C3	A3-a	C2-a
7th	B2-a	E2-a	C3	A3-a	C2-a
6th	B2-a	E2-a	C3	A3-a	C2-a
5th	B2-a	E2-a	C3	A3-a	C2-a
4th	B2	E2	C3	A3	C2
3th	B2	E2	C3	A3	C2
2th	B2	C8	C3	A3	C2
1th	B1a	C1g	C1b	A1c	C1a

BLOCK 77

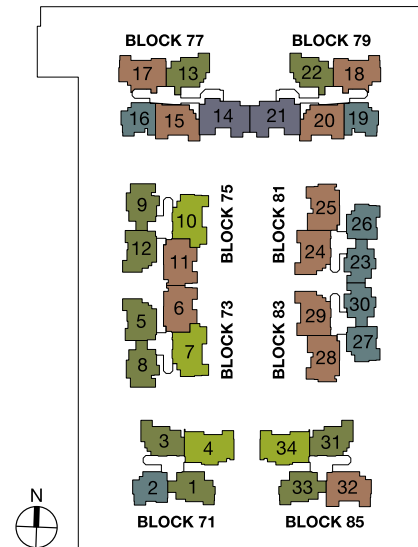
	27	28	29	30
12th	A2	PH C5	PH C4	A4
11th	A2	C5	C4	A4
10th	A2	C5	C4	A4
9th	A2	C5	C4	A4
8th	A2-a	C5-a	C4	A4-a
7th	A2-a	C5-a	C4	A4-a
6th	A2-a	C5-a	C4	A4-a
5th	A2-a	C5-a	C4	A4-a
4th	A2	C5	C4	A4
3th	A2	C5	C4	A4
2th	A2	C5	C4	A4
1th	A1a	C1d	C1c	A1d

BLOCK 83

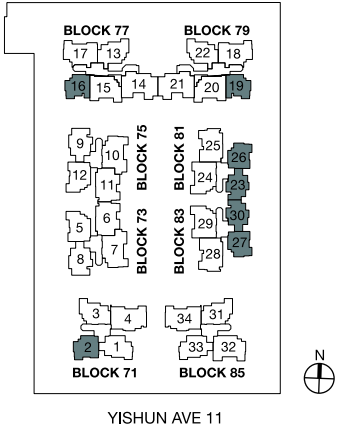
	31	32	33	34
12th	B3	PH C7	PH B7	PH D3
11th	B3	C7	B7	D3
10th	B3	C7	B7	D3
9th	B3	C7	B7	D3
8th	B3	C7	B7-a	D3-a
7th	B3	C7	B7-a	D3-a
6th	B3	C7	B7-a	D3-a
5th	B3	C7	B7-a	D3-a
4th	B3	C7	B7	D3
3th	B3	C7	B7	D3
2th	B3	C7	B7	D3
1th	B1b	C1f	B1d	D1b

BLOCK 85

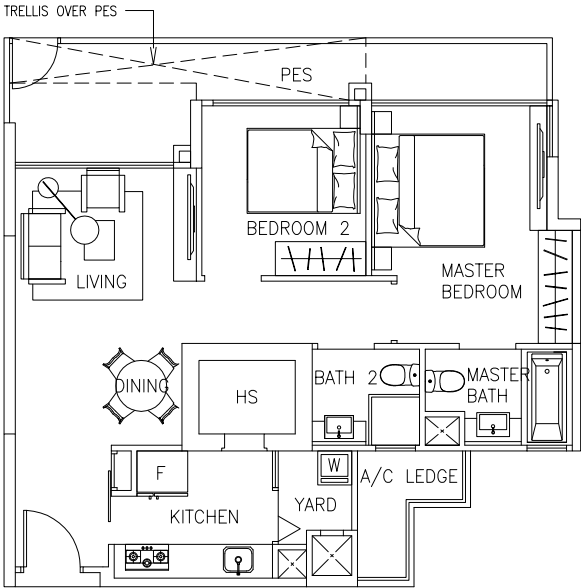
- 2 Bedroom
- 2+1 Bedroom
- 3 Bedroom
- 3+1 Bedroom
- 4 Bedroom
- Penthouse



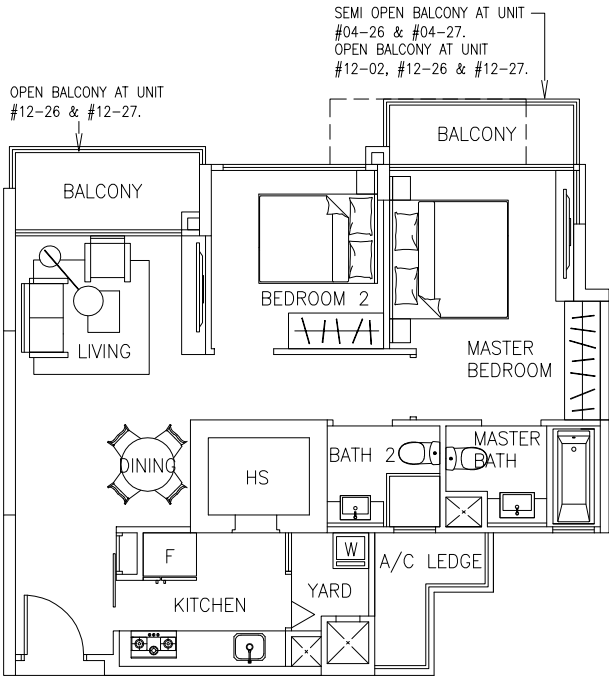
YISHUN AVE 11



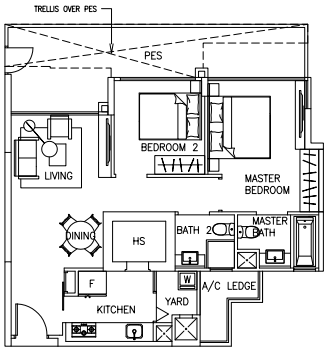
The plans are subject to change as may be required or approved by the relevant authorities. These are not drawn to scale and are for the purpose of a visual representation of the different layouts that are available. All areas are approximate and subject to final survey. The developer and its agents cannot be held liable for any inaccuracies.



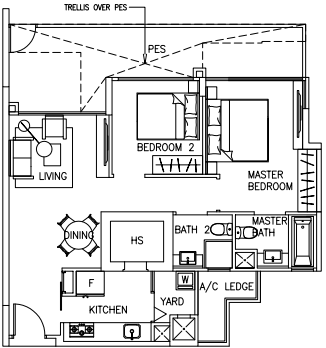
Type A1a  
87 sqm / 936 sqft  
#01-26, #01-27



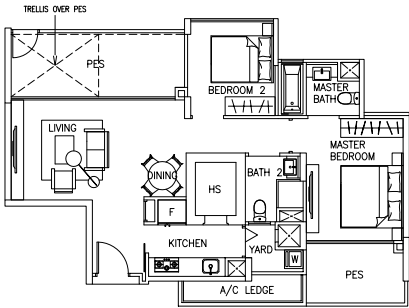
Type A2  
81 sqm / 872 sqft  
#02-02 to #12-02  
#02-26 to #04-26, #09-26 to #12-26  
#02-27 to #04-27, #09-27 to #12-27



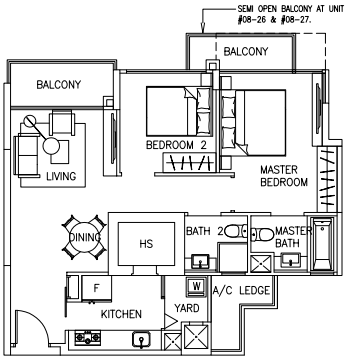
Type A1b  
93 sqm / 1001 sqft  
#01-02



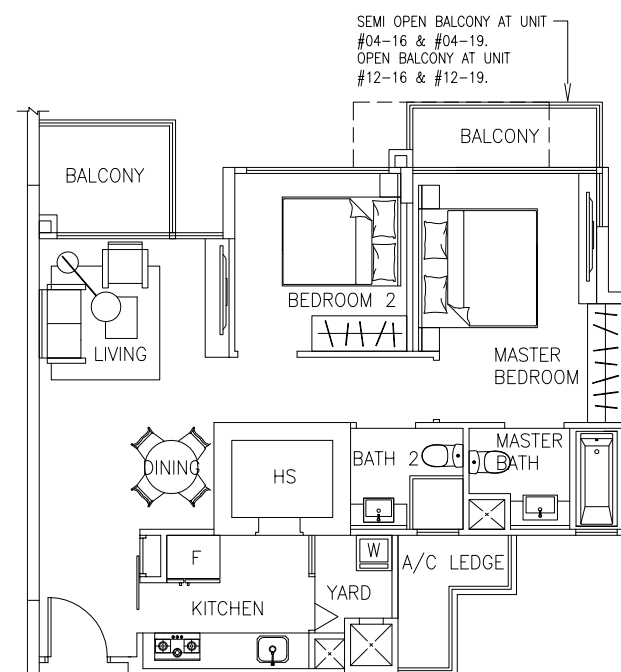
Type A1c  
93 sqm / 1001 sqft  
#01-16, #01-19



Type A1d  
93 sqm / 1001 sqft  
#01-23, #01-30



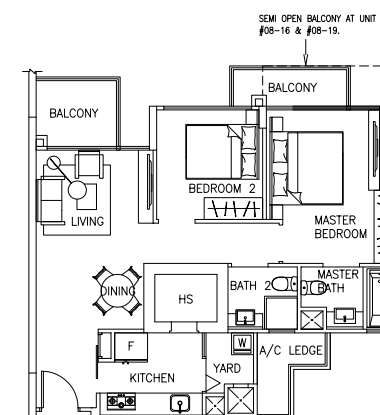
Type A2a  
81 sqm / 872 sqft  
#05-26 to #08-26  
#05-27 to #08-27



### Type A3

81 sqm / 872 sqft

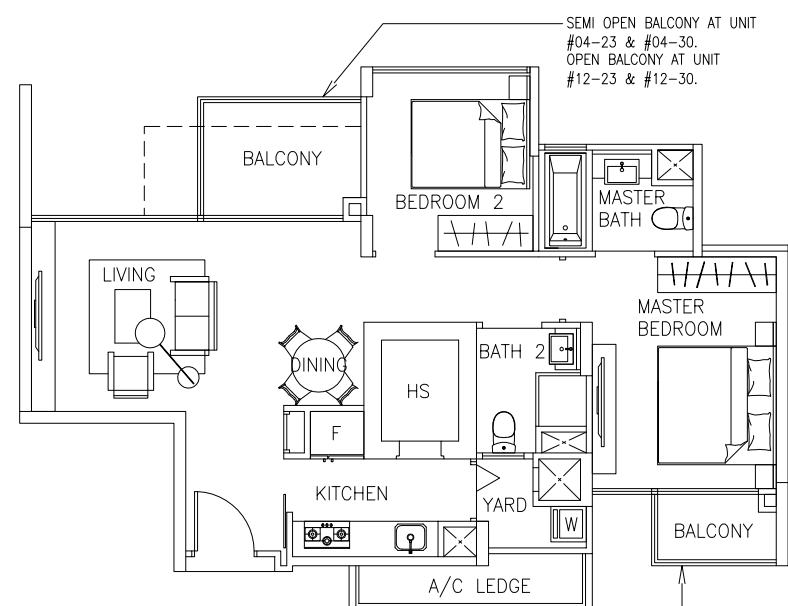
#02-16 to #04-16, #09-16 to #12-16  
#02-19 to #04-19, #09-19 to #12-19



### Type A3a

81 sqm / 872 sqft

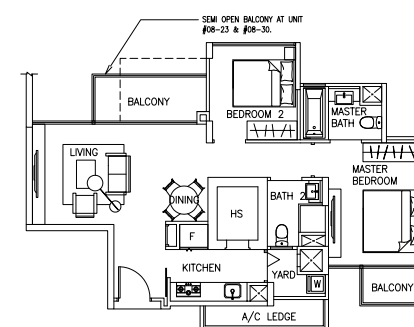
#05-16 to #08-16  
#05-19 to #08-19



### Type A4

82 sqm / 883 sqft

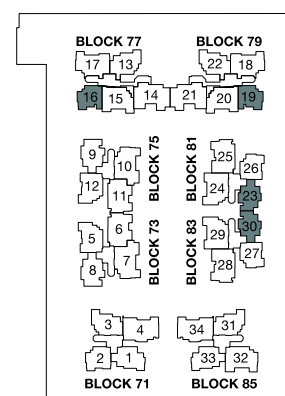
#02-23 to #04-23, #09-23 to #12-23  
#02-30 to #04-30, #09-30 to #12-30



### Type A4a

82 sqm / 883 sqft

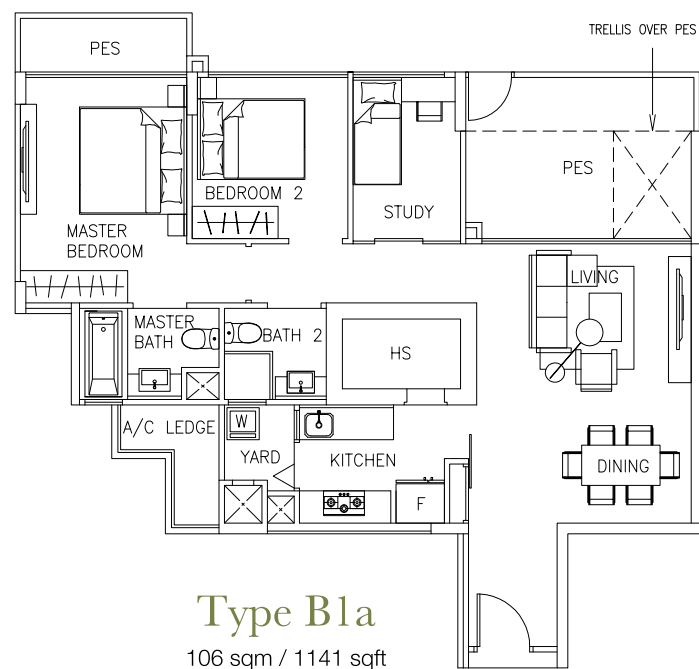
#05-23 to #08-23  
#05-30 to #08-30



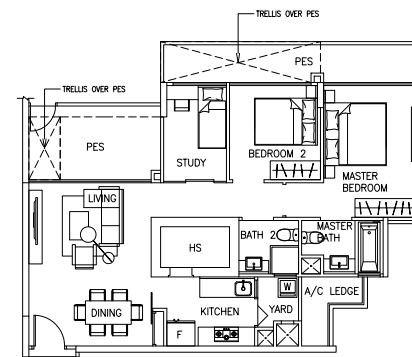
YISHUN AVE 11



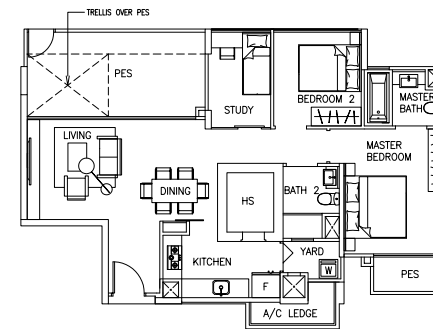
The plans are subject to change as may be required or approved by the relevant authorities. These are not drawn to scale and are for the purpose of a visual representation of the different layouts that are available. All areas are approximate and subject to final survey. The developer and its agents cannot be held liable for any inaccuracies.



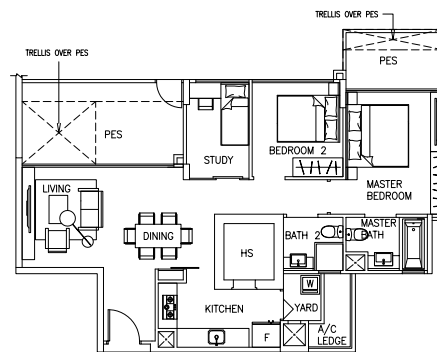
**Type B1a**  
106 sqm / 1141 sqft  
#01-13, #01-22



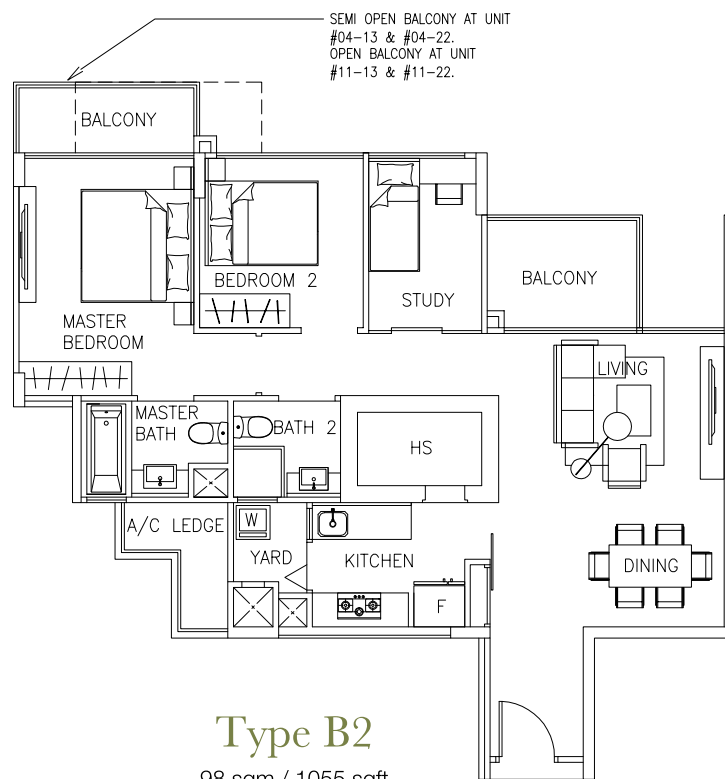
**Type B1b**  
106 sqm / 1141 sqft  
#01-03, #01-31



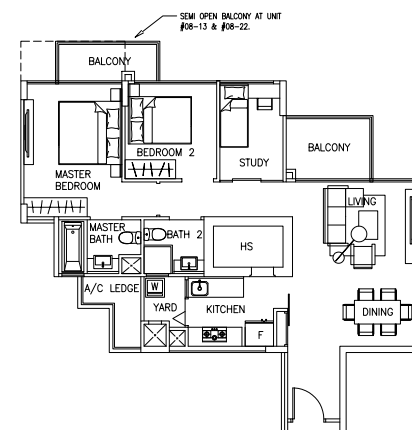
**Type B1c**  
106 sqm / 1141 sqft  
#01-08, #01-09



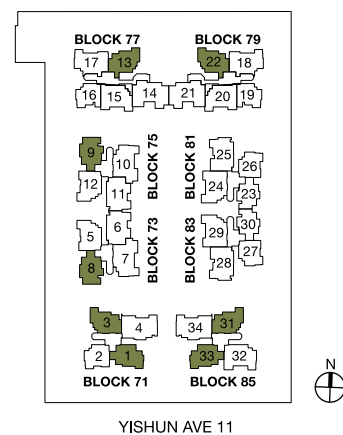
**Type B1d**  
106 sqm / 1141 sqft  
#01-01, #01-33



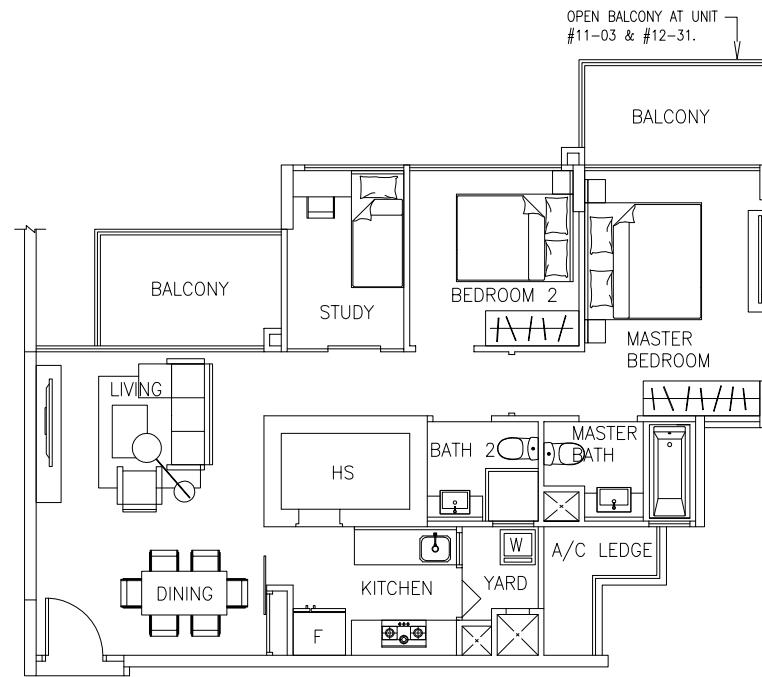
**Type B2**  
98 sqm / 1055 sqft  
#02-13 to #04-13, #09-13 to #11-13  
#02-22 to #04-22, #09-22 to #11-22



**Type B2a**  
98 sqm / 1055 sqft  
#05-13 to #08-13  
#05-22 to #08-22



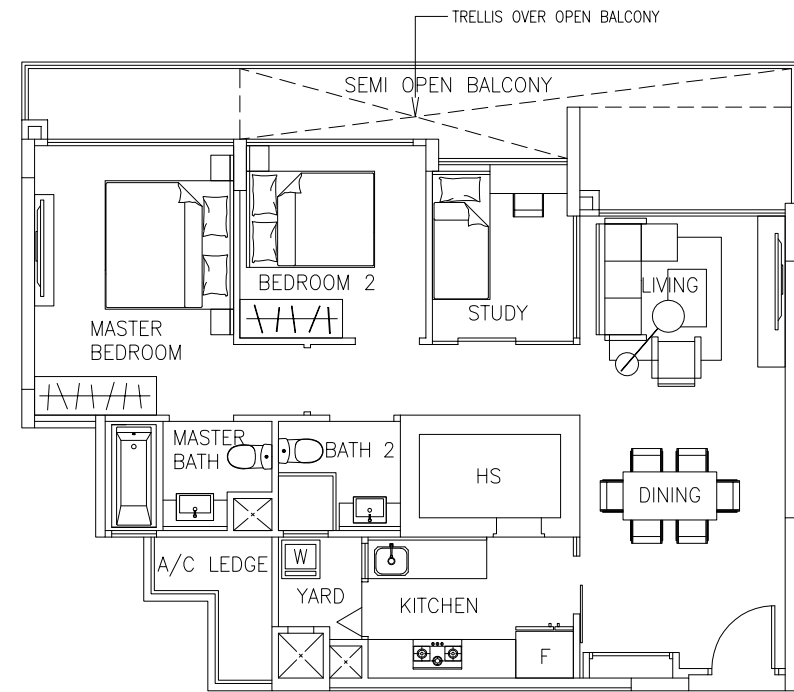
The plans are subject to change as may be required or approved by the relevant authorities. These are not drawn to scale and are for the purpose of a visual representation of the different layouts that are available. All areas are approximate and subject to final survey. The developer and its agents cannot be held liable for any inaccuracies.



### Type B3

96 sqm / 1033 sqft

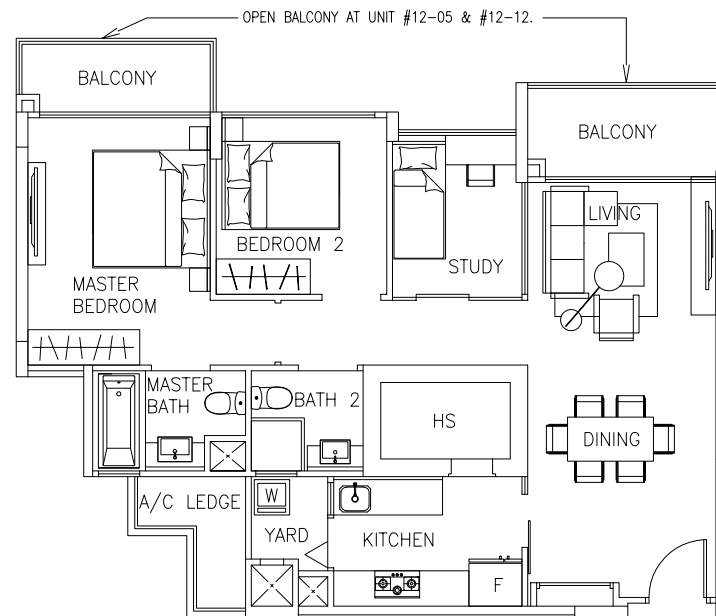
#02-03 to #11-03  
#02-31 to #12-31



### Type B4

105 sqm / 1130 sqft

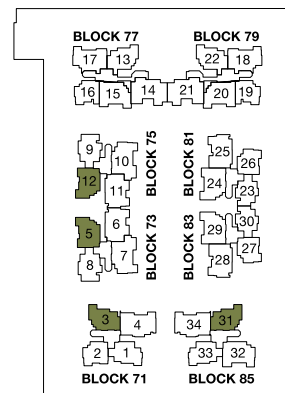
#02-05, #02-12



### Type B5

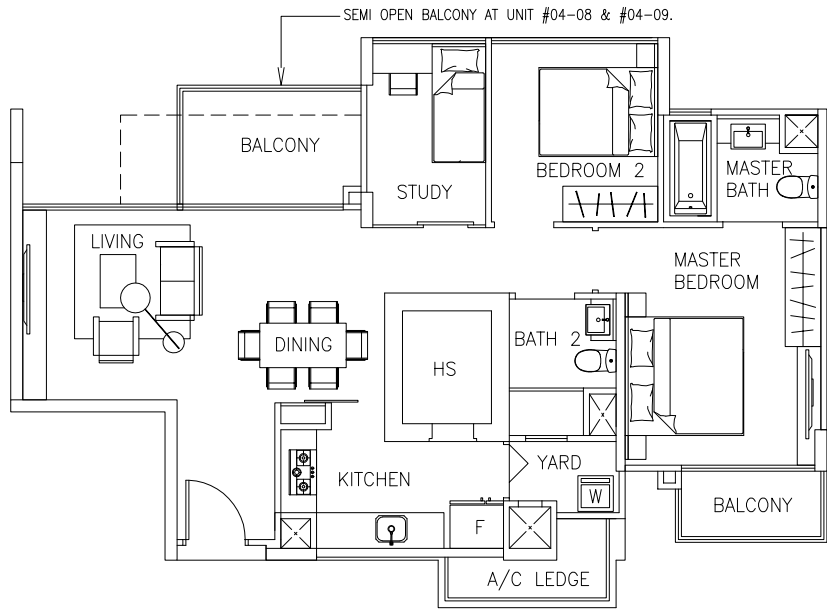
96 sqm / 1033 sqft

#03-05 to #12-05  
#03-12 to #12-12



YISHUN AVE 11

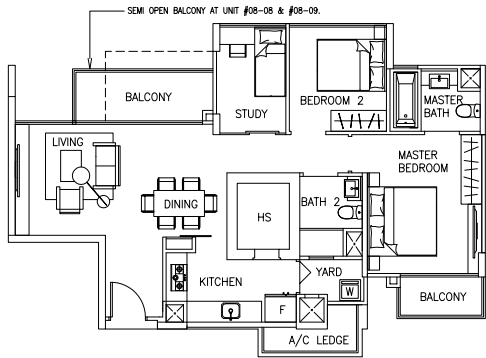
The plans are subject to change as may be required or approved by the relevant authorities. These are not drawn to scale and are for the purpose of a visual representation of the different layouts that are available. All areas are approximate and subject to final survey. The developer and its agents cannot be held liable for any inaccuracies.



Type B6

96 sqm / 1033 sqft

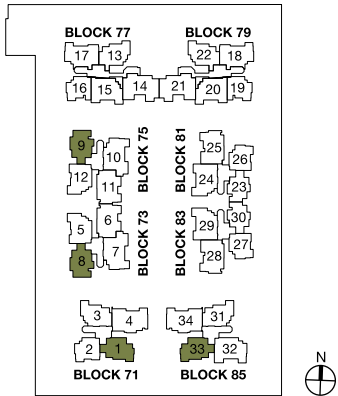
#02-08 to #04-08, #09-08 to #11-08  
#02-09 to #04-09, #09-09 to #11-09



Type B6a

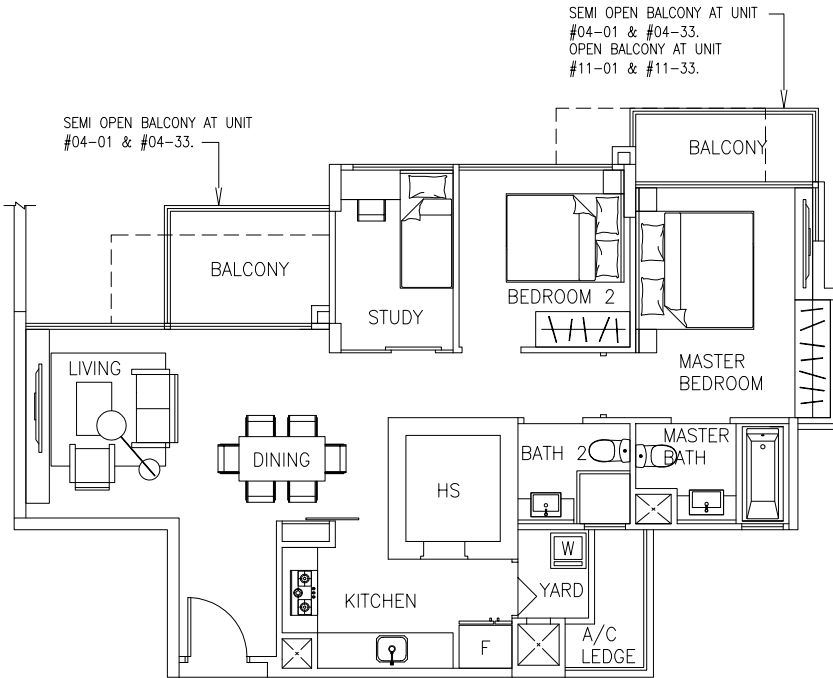
96 sqm / 1033 sqft

#05-08 to #08-08  
#05-09 to #08-09



YISHUN AVE 11

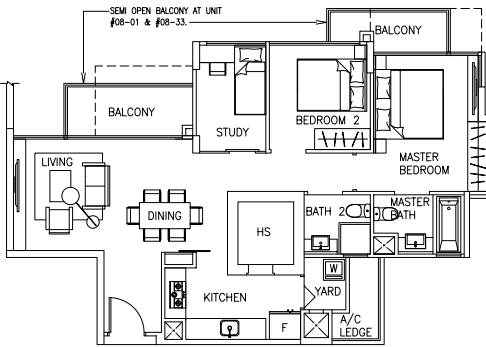
The plans are subject to change as may be required or approved by the relevant authorities. These are not drawn to scale and are for the purpose of a visual representation of the different layouts that are available. All areas are approximate and subject to final survey. The developer and its agents cannot be held liable for any inaccuracies.



Type B7

95 sqm / 1023 sqft

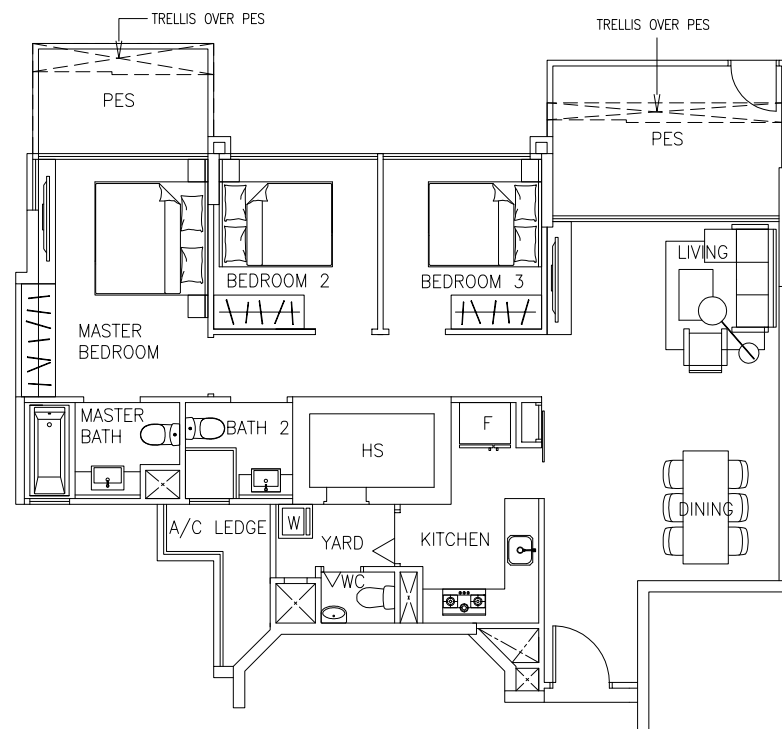
#02-01 to #04-01, #09-01 to #11-01  
#02-33 to #04-33, #09-33 to #11-33



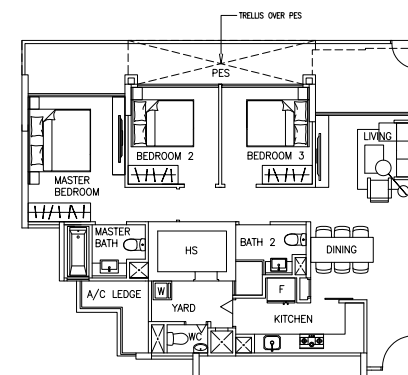
Type B7a

95 sqm / 1023 sqft

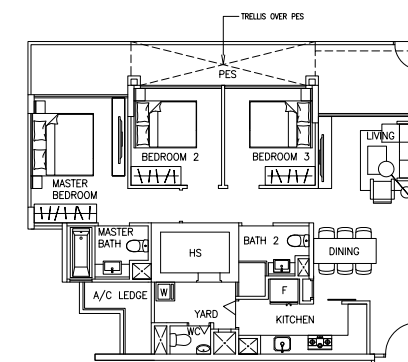
#05-01 to #08-01  
#05-33 to #08-33



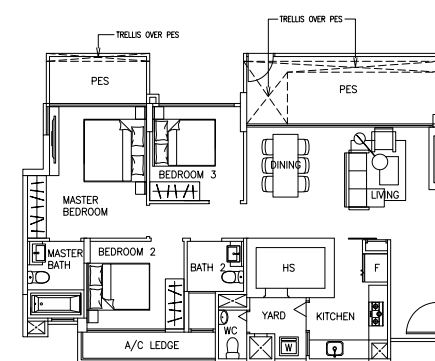
**Type C1a**  
118 sqm / 1270 sqft  
#01-17, #01-18



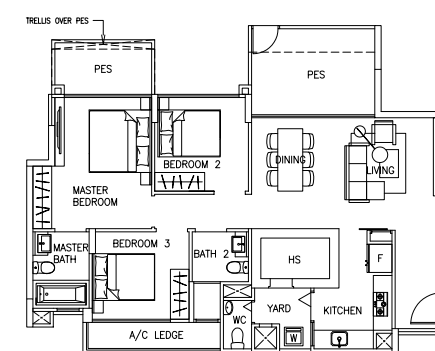
**Type C1b**  
118 sqm / 1270 sqft  
#01-15, #01-20



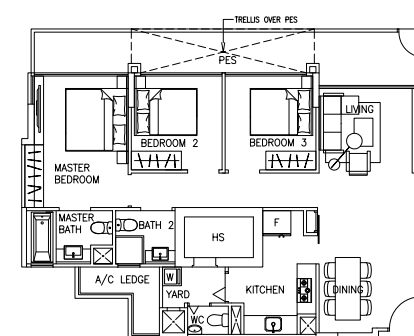
**Type C1c**  
117 sqm / 1259 sqft  
#01-24, #01-29



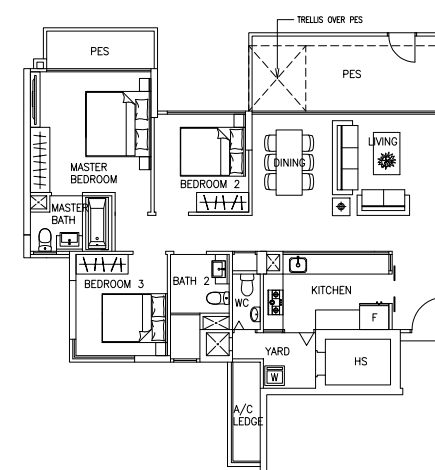
**Type C1d**  
118 sqm / 1270 sqft  
#01-25, #01-28



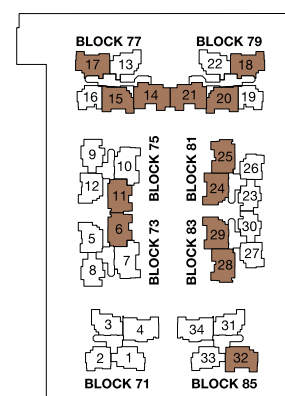
**Type C1e**  
116 sqm / 1249 sqft  
#01-06, #01-11



**Type C1f**  
118 sqm / 1270 sqft  
#01-32



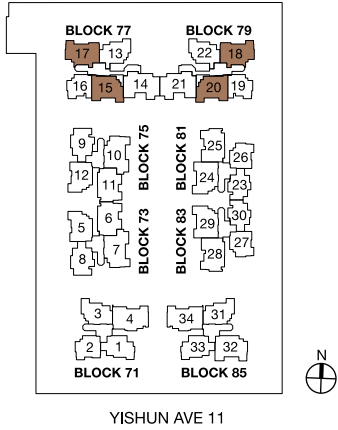
**Type C1g**  
122 sqm / 1313 sqft  
#01-14, #01-21



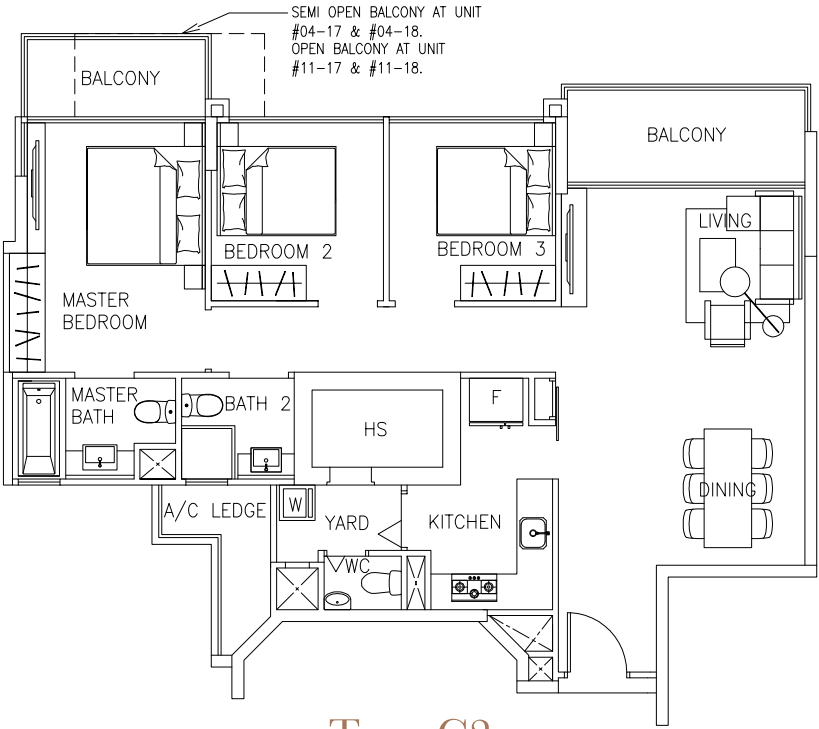
YISHUN AVE 11

The plans are subject to change as may be required or approved by the relevant authorities. These are not drawn to scale and are for the purpose of a visual representation of the different layouts that are available. All areas are approximate and subject to final survey. The developer and its agents cannot be held liable for any inaccuracies.





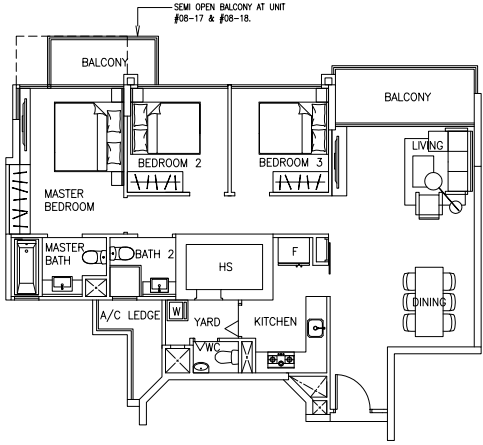
The plans are subject to change as may be required or approved by the relevant authorities. These are not drawn to scale and are for the purpose of a visual representation of the different layouts that are available. All areas are approximate and subject to final survey. The developer and its agents cannot be held liable for any inaccuracies.



Type C2

111 sqm / 1195 sqft

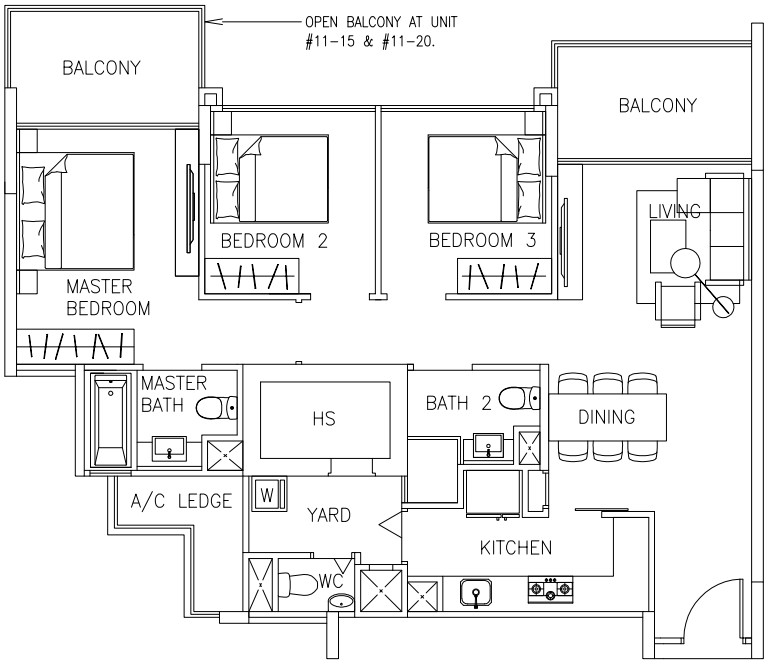
#02-17 to #04-17, #09-17 to #11-17  
#02-18 to #04-18, #09-18 to #11-18



Type C2a

111 sqm / 1195 sqft

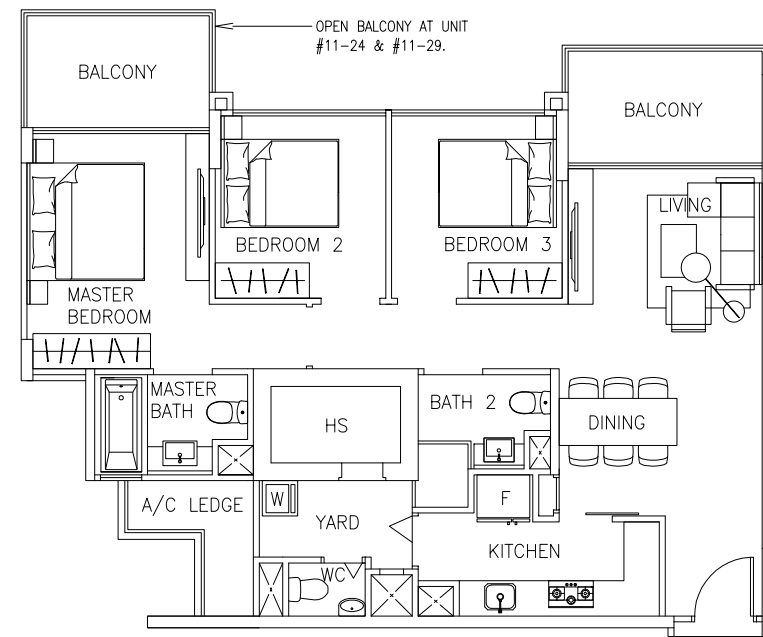
#05-17 to #08-17  
#05-18 to #08-18



Type C3

110 sqm / 1184 sqft

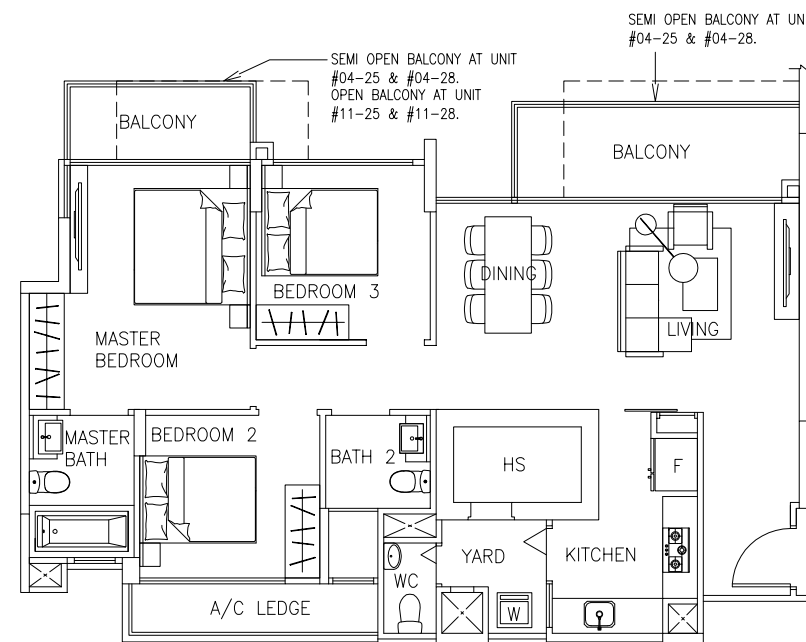
#02-15 to #11-15  
#02-20 to #11-20



### Type C4

109 sqm / 1173 sqft

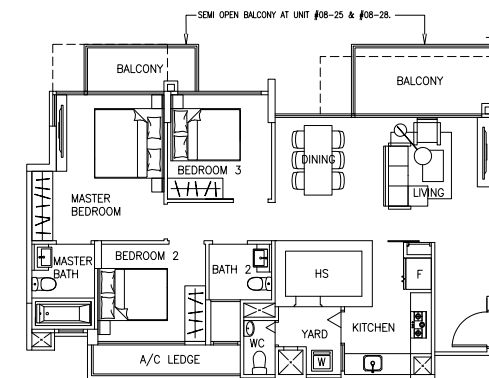
#02-24 to #11-24  
#02-29 to #11-29



### Type C5

111 sqm / 1195 sqft

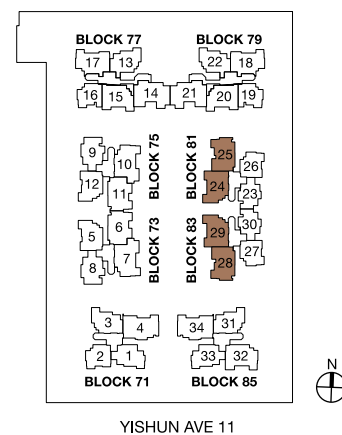
#02-25 to #04-25, #09-25 to #11-25  
#02-28 to #04-28, #09-28 to #11-28



### Type C5a

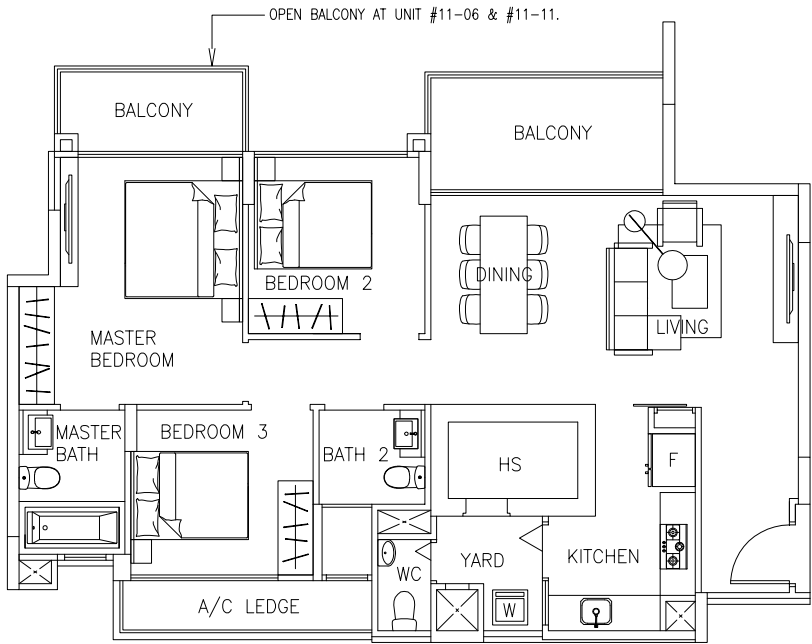
111 sqm / 1195 sqft

#05-25 to #08-25  
#05-28 to #08-28



YISHUN AVE 11

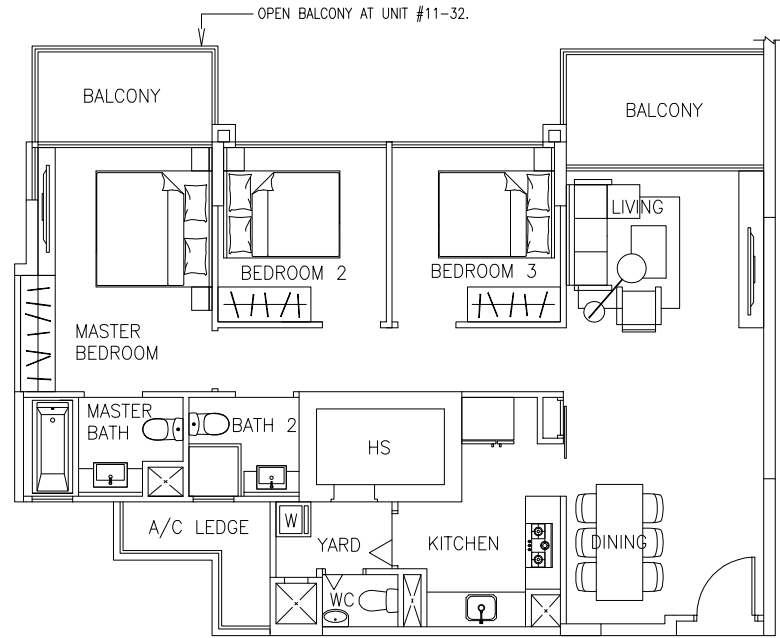
The plans are subject to change as may be required or approved by the relevant authorities. These are not drawn to scale and are for the purpose of a visual representation of the different layouts that are available. All areas are approximate and subject to final survey. The developer and its agents cannot be held liable for any inaccuracies.



### Type C6

112 sqm / 1206 sqft

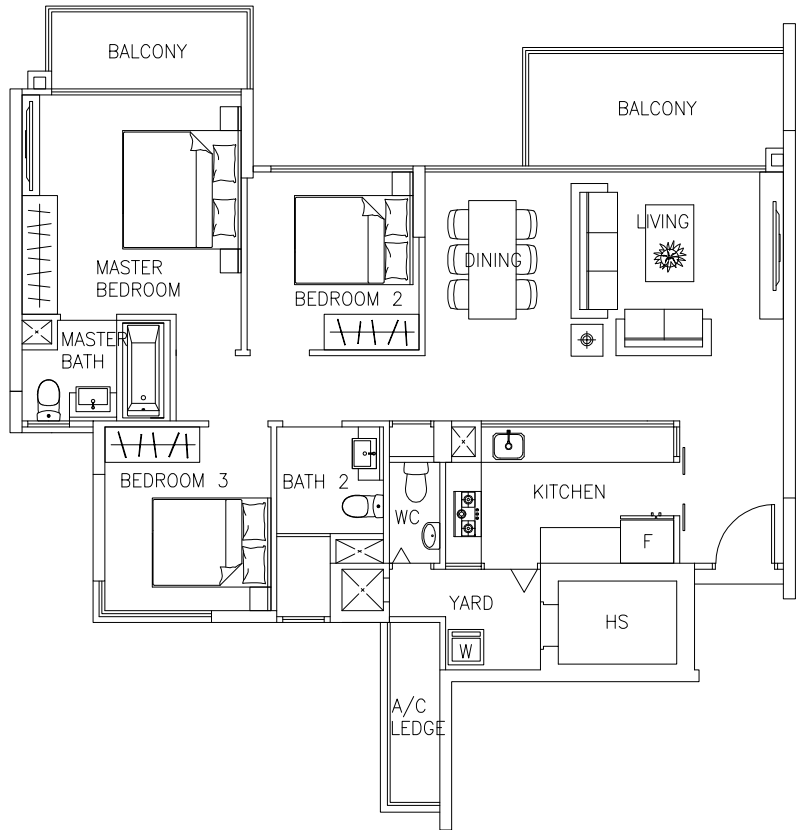
#02-06 to #11-06  
#02-11 to #11-11



### Type C7

111 sqm / 1195 sqft

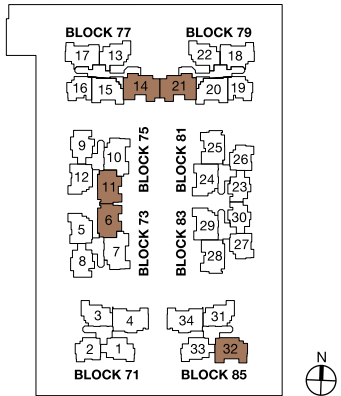
#02-32 to #11-32



### Type C8

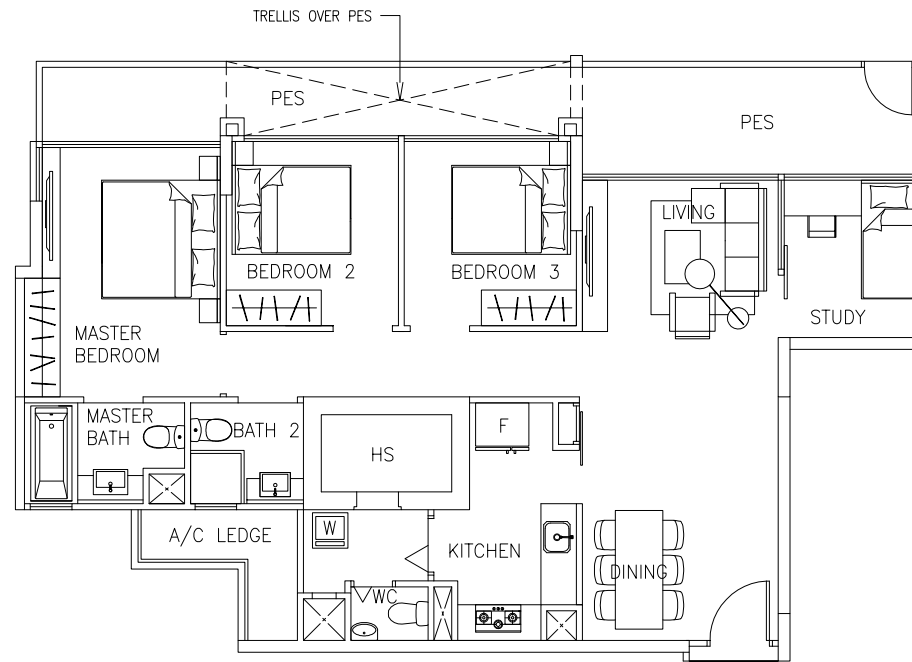
117 sqm / 1259 sqft

#02-14, #02-21

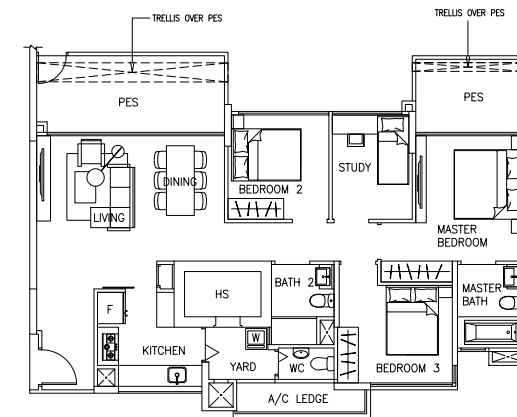


YISHUN AVE 11

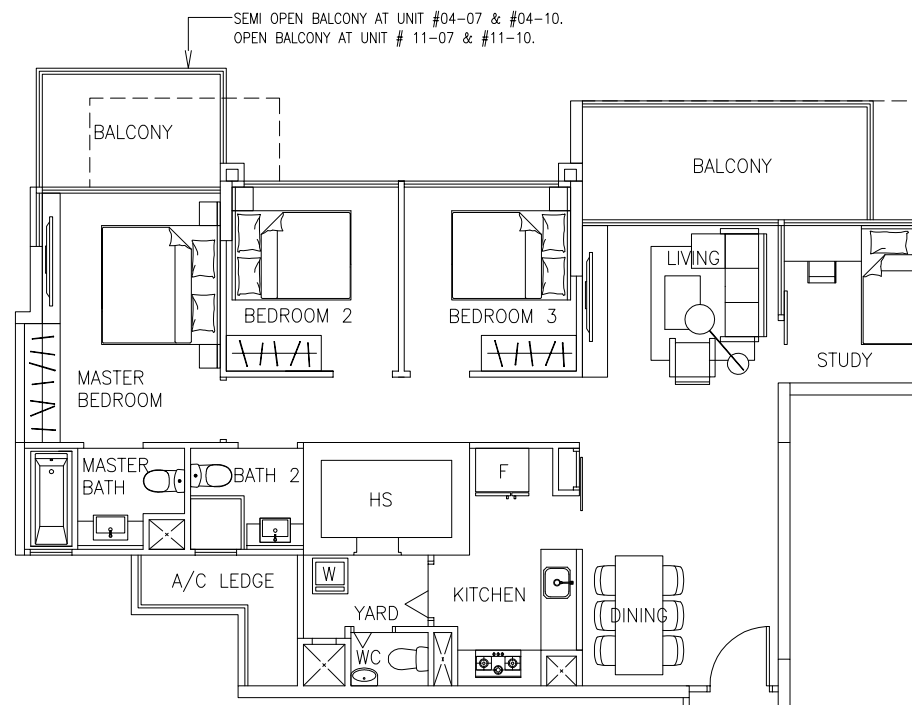
The plans are subject to change as may be required or approved by the relevant authorities. These are not drawn to scale and are for the purpose of a visual representation of the different layouts that are available. All areas are approximate and subject to final survey. The developer and its agents cannot be held liable for any inaccuracies.



**Type D1a**  
127 sqm / 1367 sqft  
#01-07, #01-10

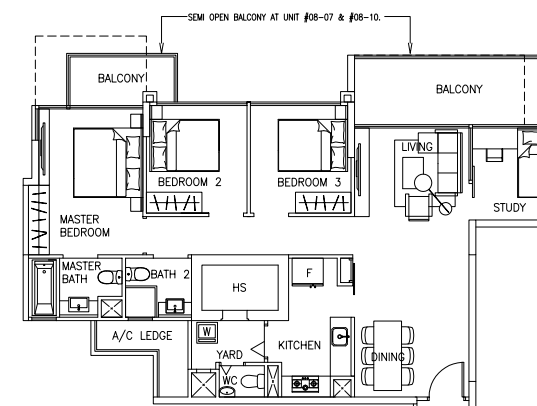


**Type D1b**  
126 sqm / 1356 sqft  
#01-04, #01-34

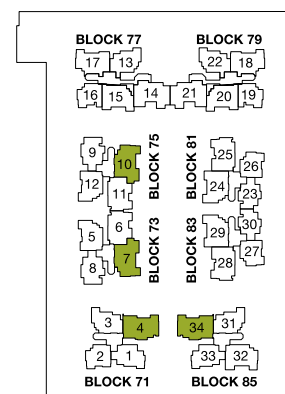


**Type D2**  
121 sqm / 1302 sqft

#02-07 to #04-07, #09-07 to #11-07  
#02-10 to #04-10, #09-10 to #11-10

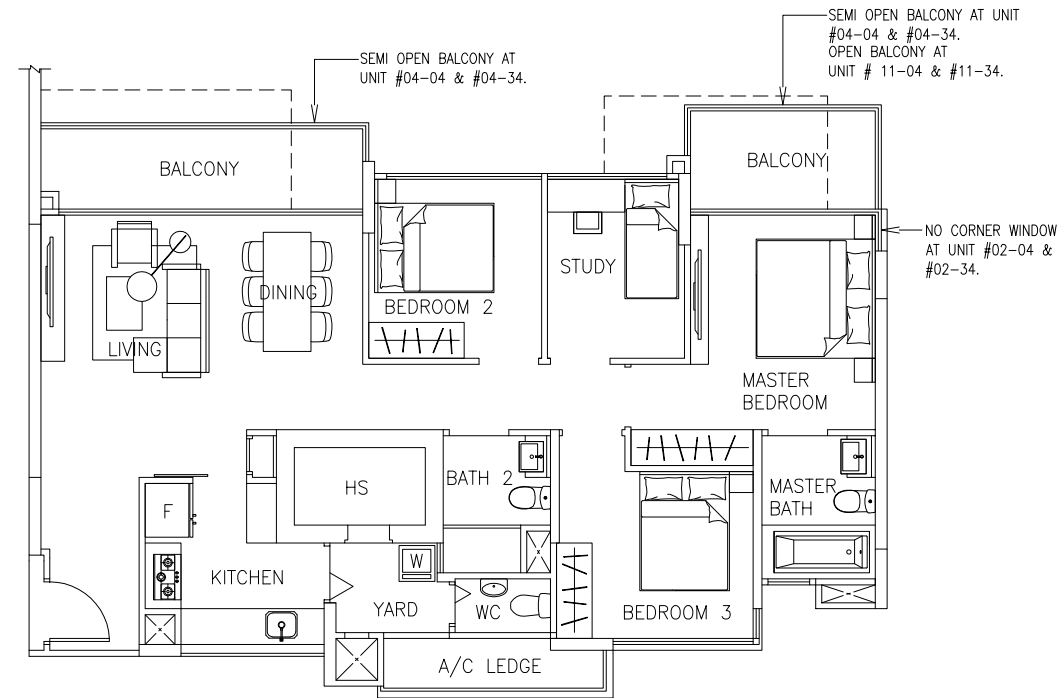


**Type D2-a**  
121 sqm / 1302 sqft  
#05-07 to #08-07  
#05-10 to #08-10



YISHUN AVE 11

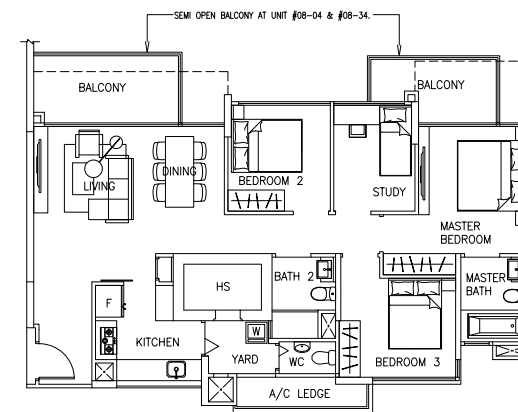
The plans are subject to change as may be required or approved by the relevant authorities. These are not drawn to scale and are for the purpose of a visual representation of the different layouts that are available. All areas are approximate and subject to final survey. The developer and its agents cannot be held liable for any inaccuracies.



Type D3

120 sqm / 1292 sqft

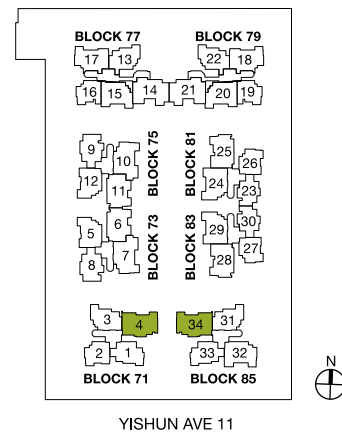
#02-04 to #04-04, #09-04 to #11-04  
#02-34 to #04-34, #09-34 to #11-34



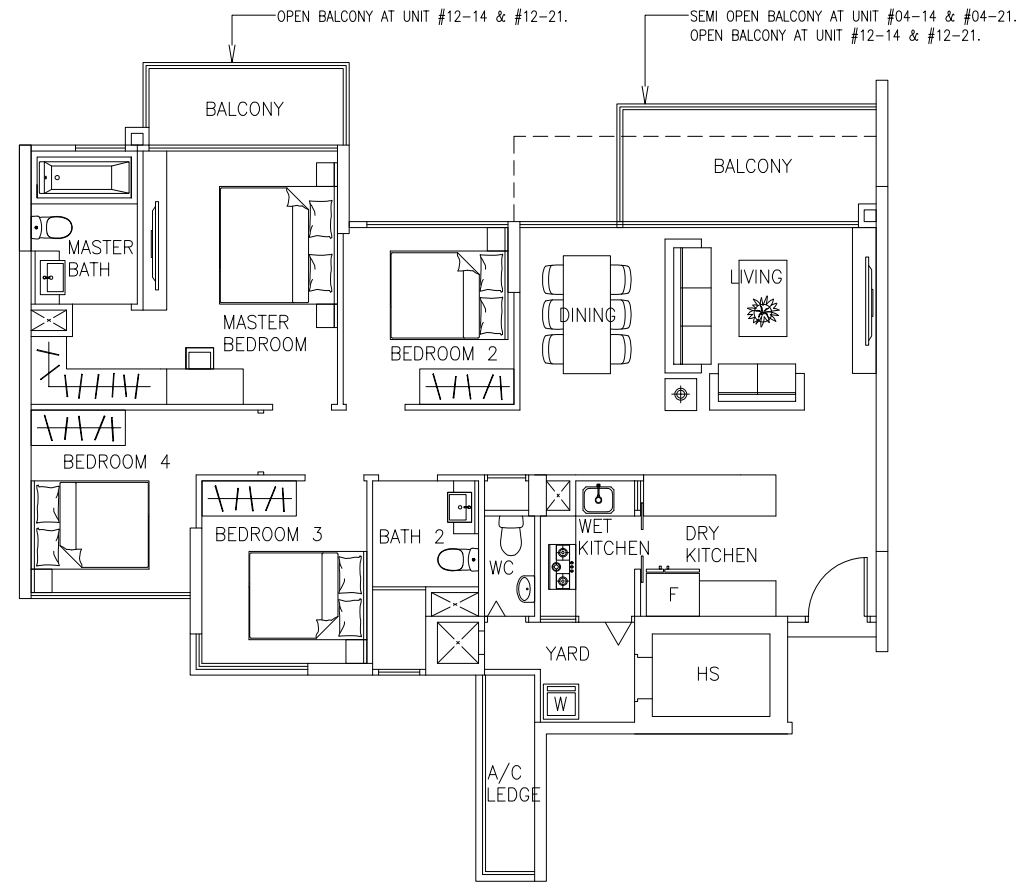
Type D3-a

121 sqm / 1302 sqft

#05-04 to #08-04  
#05-34 to #08-34



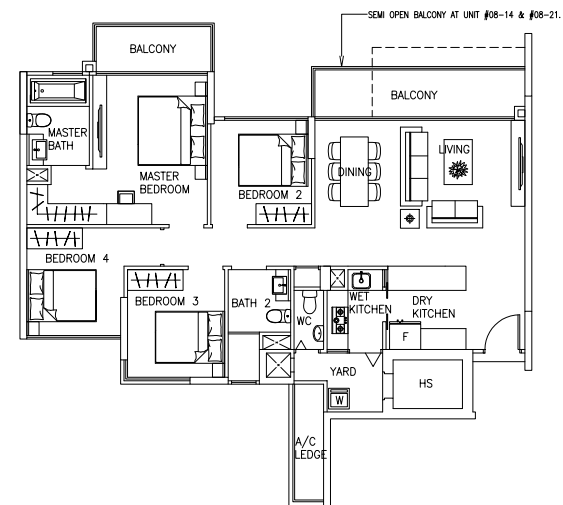
The plans are subject to change as may be required or approved by the relevant authorities. These are not drawn to scale and are for the purpose of a visual representation of the different layouts that are available. All areas are approximate and subject to final survey. The developer and its agents cannot be held liable for any inaccuracies.



## Type E2

131 sqm / 1410 sqft

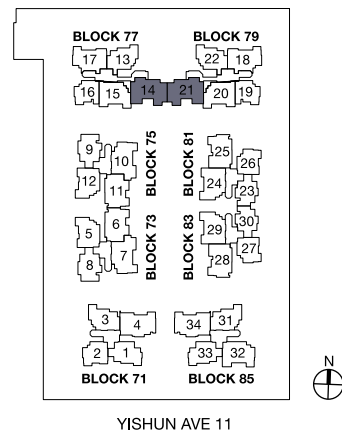
#03-14, #04-14, #09-14 to #12-14  
#03-21, #04-21, #09-21 to #12-21



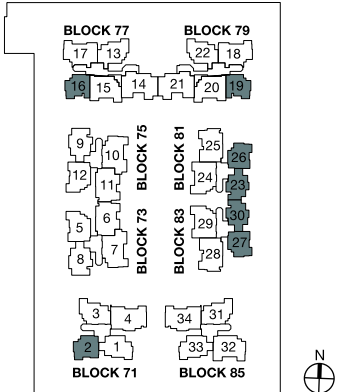
## Type E2-a

131 sqm / 1410 sqft

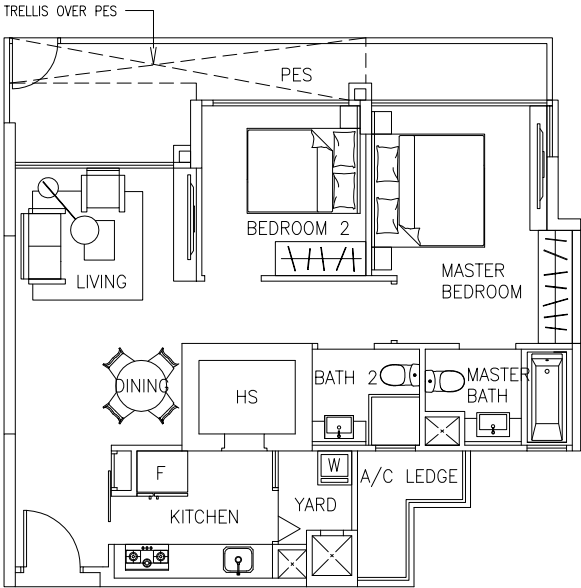
#05-14 to #08-14  
#05-21 to #08-21



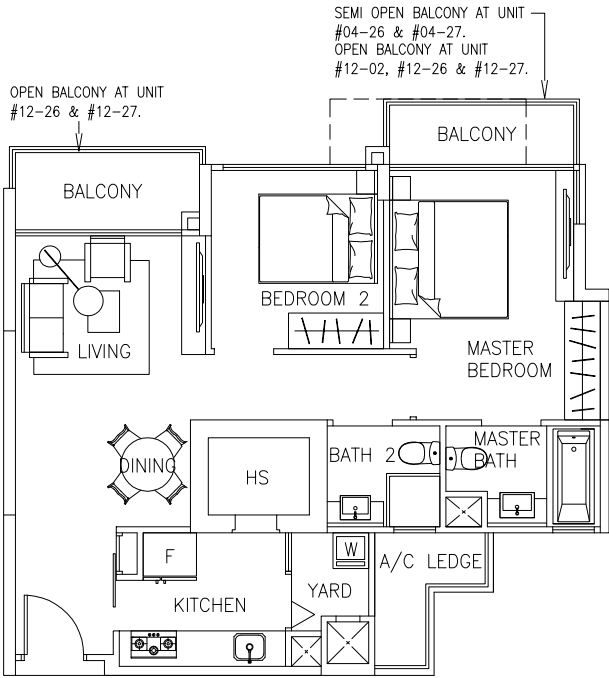
The plans are subject to change as may be required or approved by the relevant authorities. These are not drawn to scale and are for the purpose of a visual representation of the different layouts that are available. All areas are approximate and subject to final survey. The developer and its agents cannot be held liable for any inaccuracies.



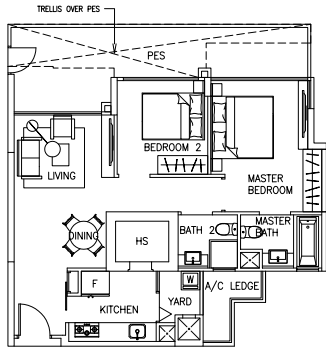
The plans are subject to change as may be required or approved by the relevant authorities. These are not drawn to scale and are for the purpose of a visual representation of the different layouts that are available. All areas are approximate and subject to final survey. The developer and its agents cannot be held liable for any inaccuracies.



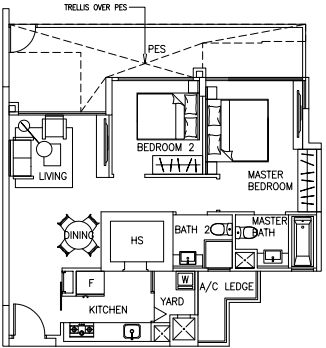
Type A1a  
87 sqm / 936 sqft  
#01-26, #01-27



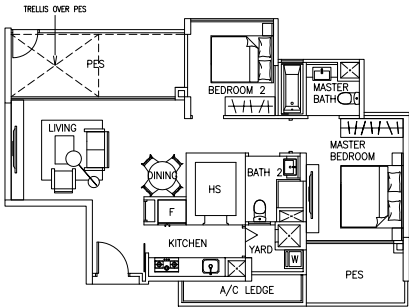
Type A2  
81 sqm / 872 sqft  
#02-02 to #12-02  
#02-26 to #04-26, #09-26 to #12-26  
#02-27 to #04-27, #09-27 to #12-27



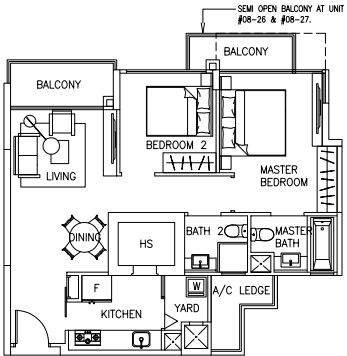
Type A1b  
93 sqm / 1001 sqft  
#01-02



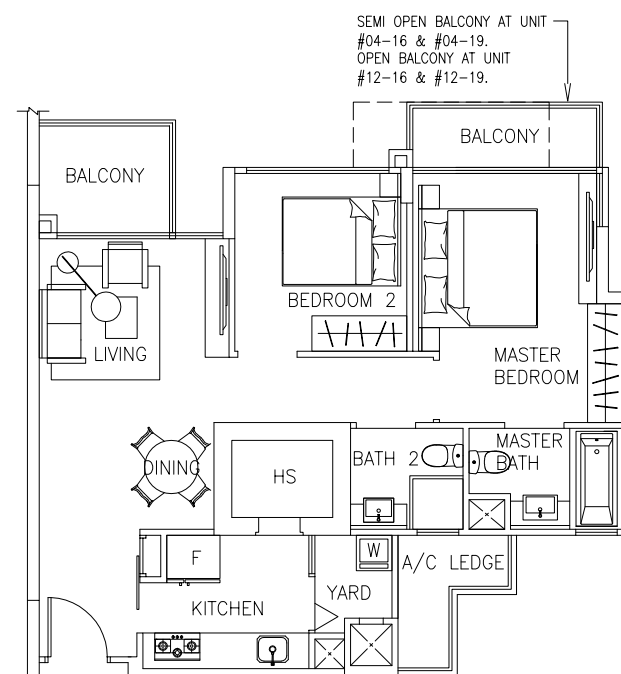
Type A1c  
93 sqm / 1001 sqft  
#01-16, #01-19



Type A1d  
93 sqm / 1001 sqft  
#01-23, #01-30



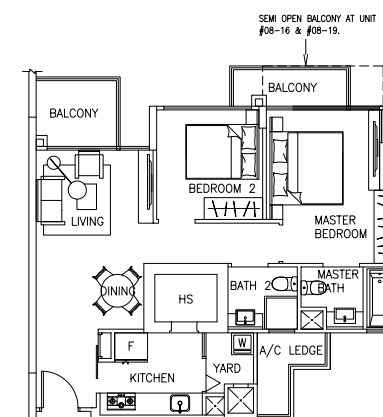
Type A2a  
81 sqm / 872 sqft  
#05-26 to #08-26  
#05-27 to #08-27



### Type A3

81 sqm / 872 sqft

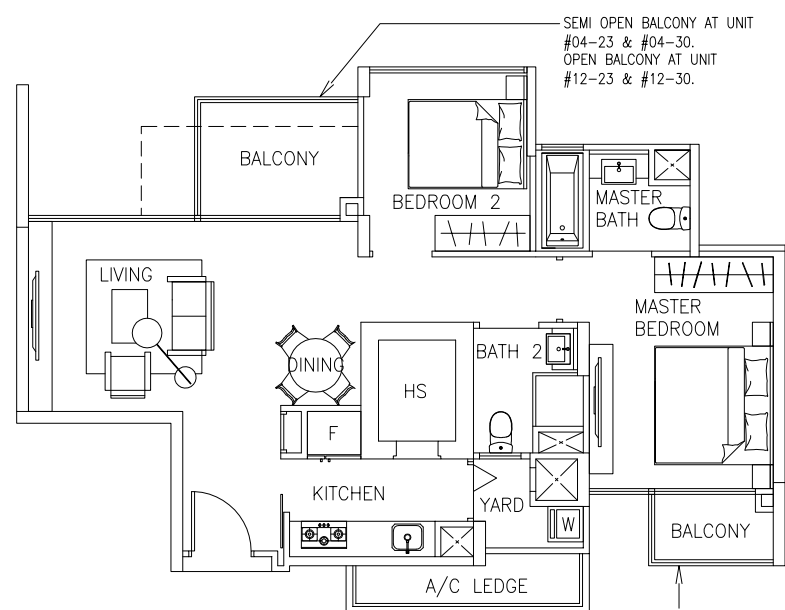
#02-16 to #04-16, #09-16 to #12-16  
#02-19 to #04-19, #09-19 to #12-19



### Type A3a

81 sqm / 872 sqft

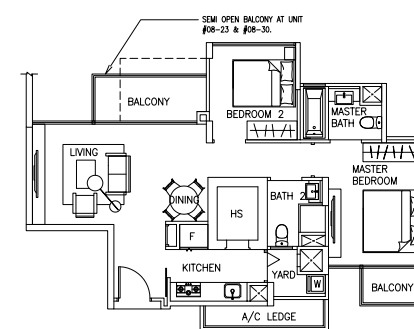
#05-16 to #08-16  
#05-19 to #08-19



### Type A4

82 sqm / 883 sqft

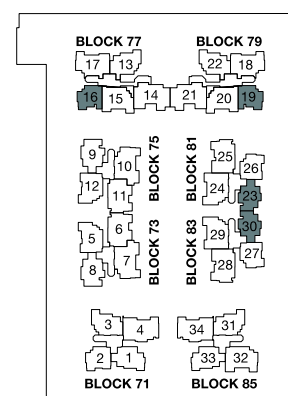
#02-23 to #04-23, #09-23 to #12-23  
#02-30 to #04-30, #09-30 to #12-30



### Type A4a

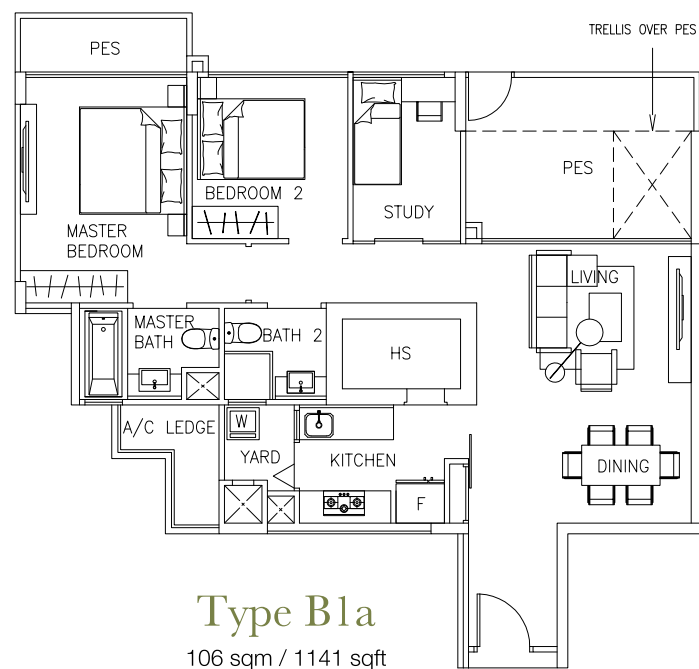
82 sqm / 883 sqft

#05-23 to #08-23  
#05-30 to #08-30

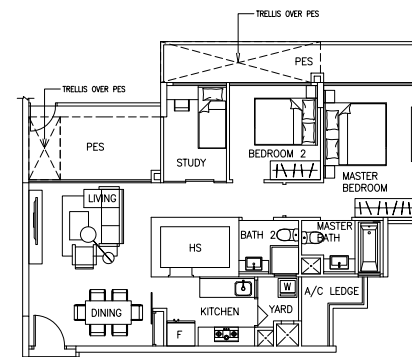


The plans are subject to change as may be required or approved by the relevant authorities. These are not drawn to scale and are for the purpose of a visual representation of the different layouts that are available. All areas are approximate and subject to final survey. The developer and its agents cannot be held liable for any inaccuracies.

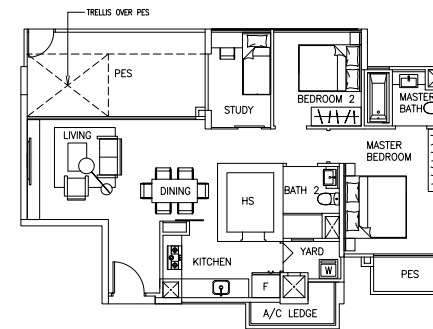




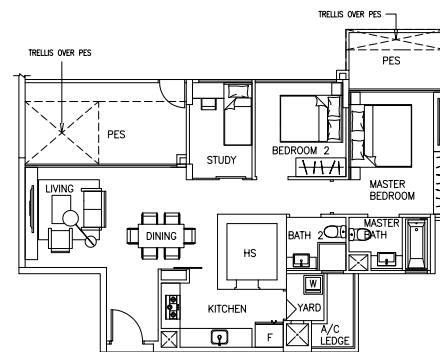
**Type B1a**  
106 sqm / 1141 sqft  
#01-13, #01-22



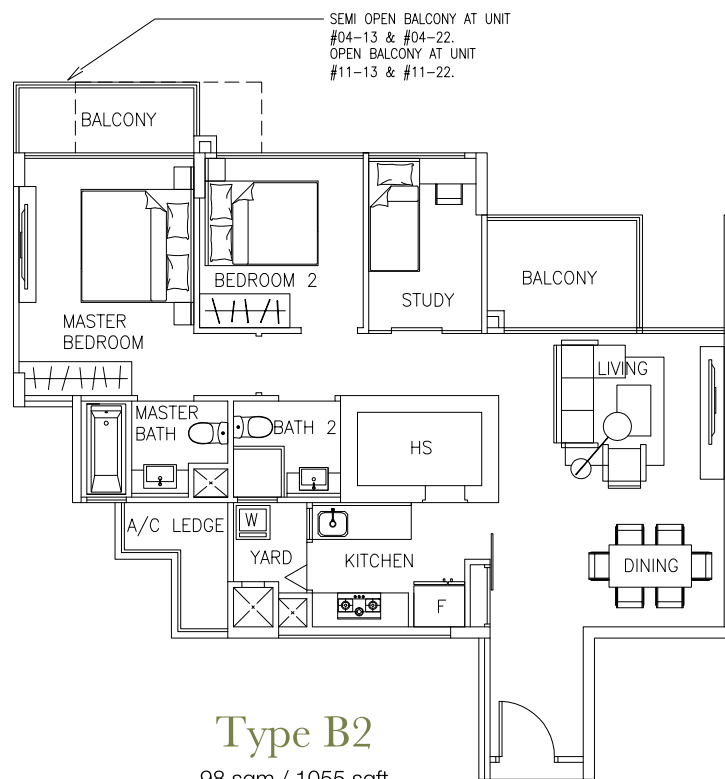
**Type B1b**  
106 sqm / 1141 sqft  
#01-03, #01-31



**Type B1c**  
106 sqm / 1141 sqft  
#01-08, #01-09

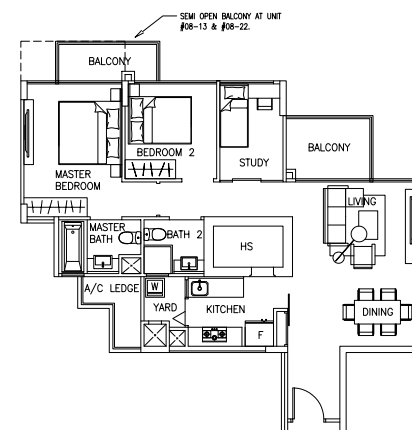


**Type B1d**  
106 sqm / 1141 sqft  
#01-01, #01-33

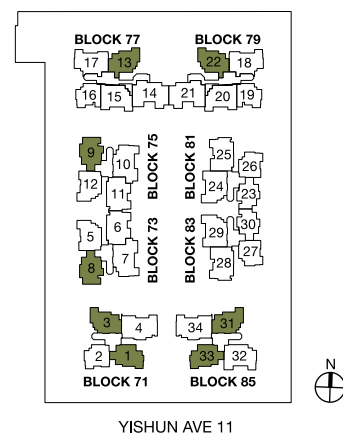


**Type B2**  
98 sqm / 1055 sqft

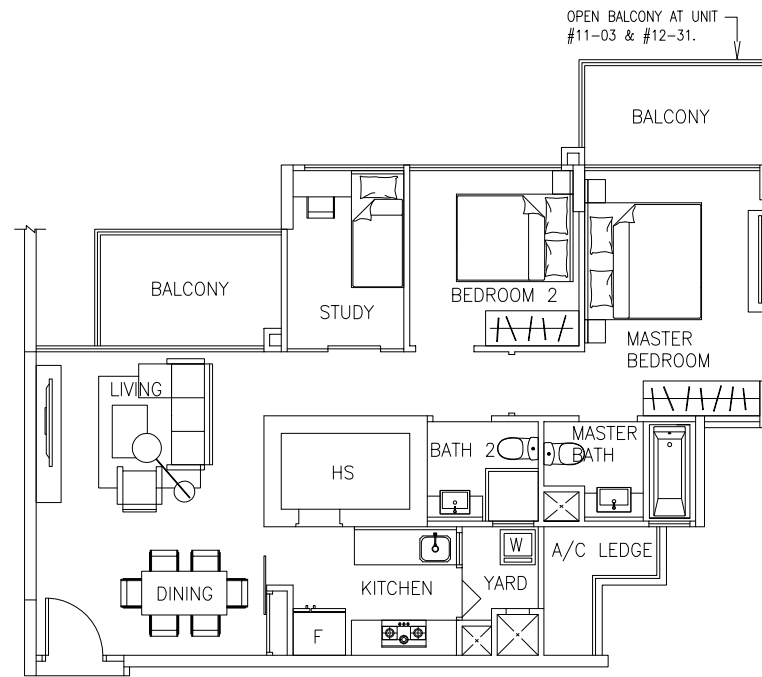
#02-13 to #04-13, #09-13 to #11-13  
#02-22 to #04-22, #09-22 to #11-22



**Type B2a**  
98 sqm / 1055 sqft  
#05-13 to #08-13  
#05-22 to #08-22



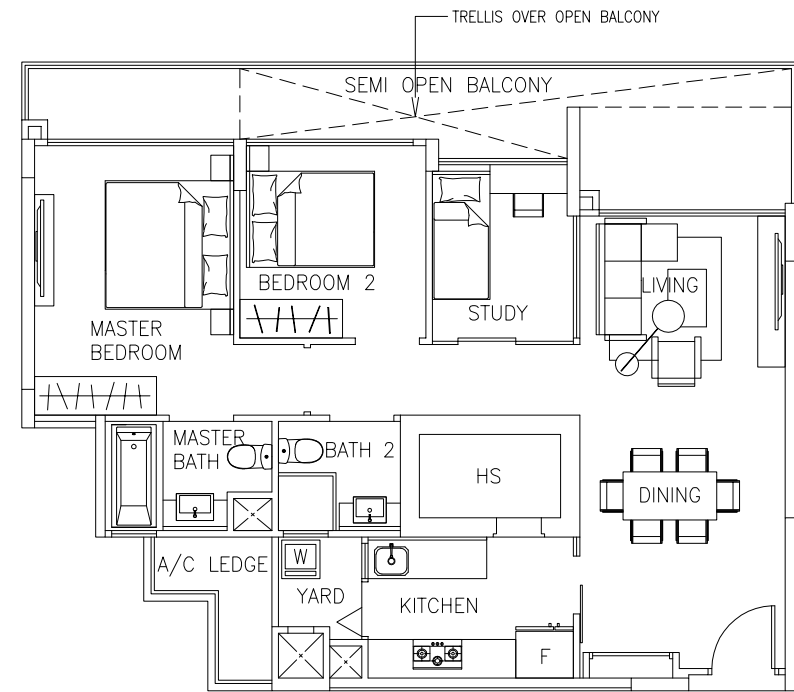
The plans are subject to change as may be required or approved by the relevant authorities. These are not drawn to scale and are for the purpose of a visual representation of the different layouts that are available. All areas are approximate and subject to final survey. The developer and its agents cannot be held liable for any inaccuracies.



### Type B3

96 sqm / 1033 sqft

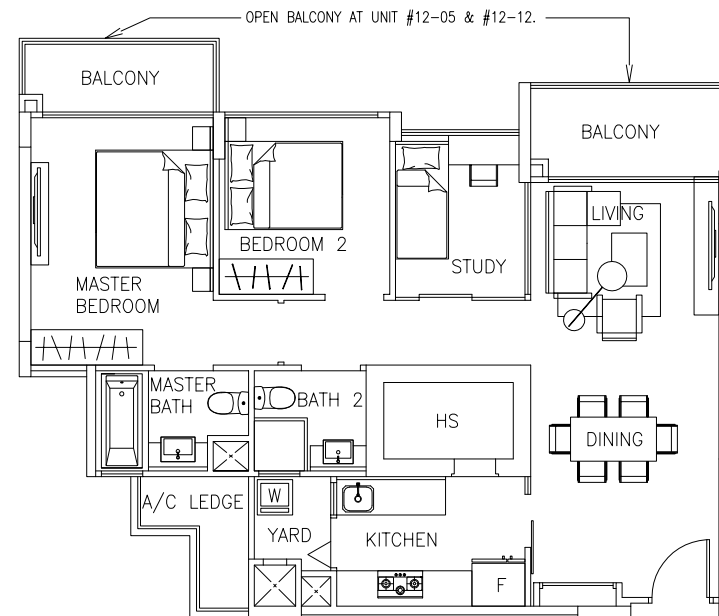
#02-03 to #11-03  
#02-31 to #12-31



### Type B4

105 sqm / 1130 sqft

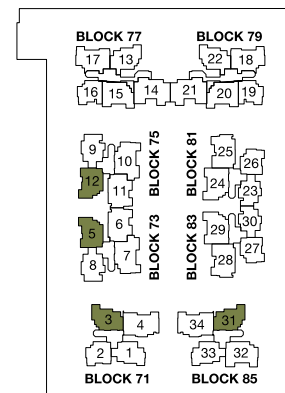
#02-05, #02-12



### Type B5

96 sqm / 1033 sqft

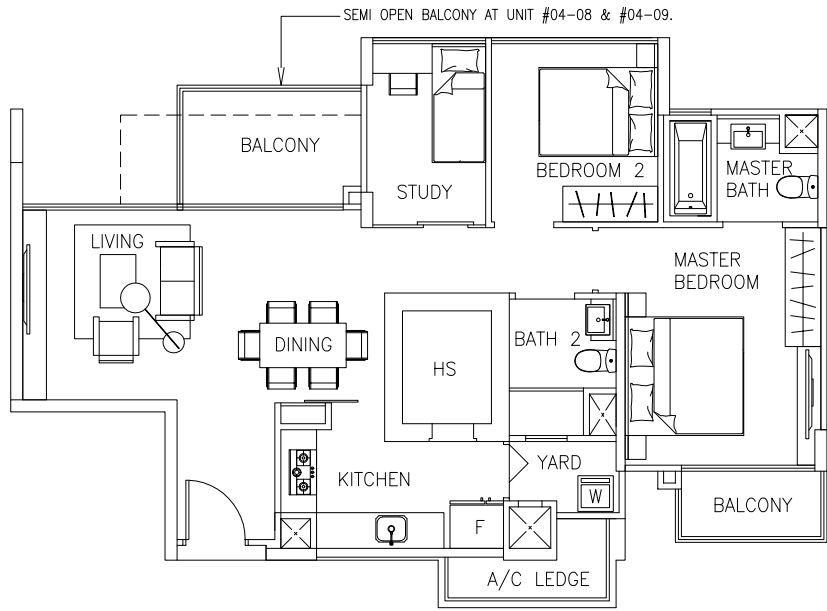
#03-05 to #12-05  
#03-12 to #12-12



YISHUN AVE 11



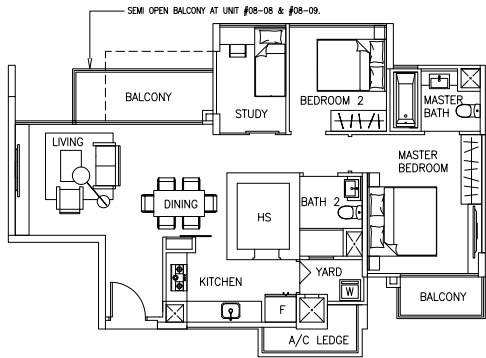
The plans are subject to change as may be required or approved by the relevant authorities. These are not drawn to scale and are for the purpose of a visual representation of the different layouts that are available. All areas are approximate and subject to final survey. The developer and its agents cannot be held liable for any inaccuracies.



Type B6

96 sqm / 1033 sqft

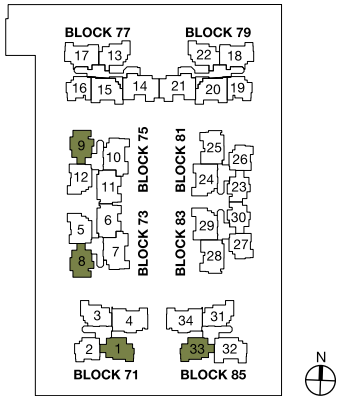
#02-08 to #04-08, #09-08 to #11-08  
#02-09 to #04-09, #09-09 to #11-09



Type B6a

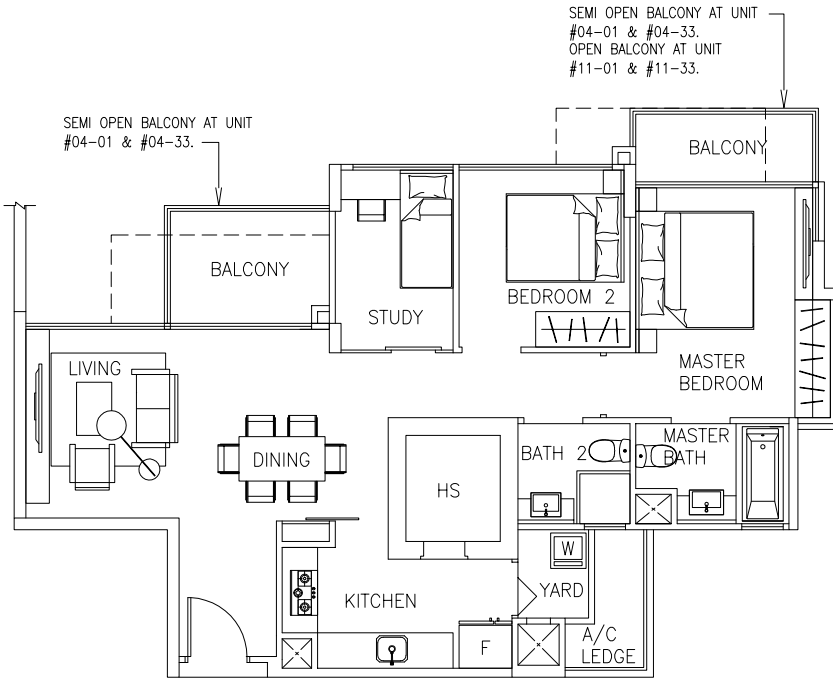
96 sqm / 1033 sqft

#05-08 to #08-08  
#05-09 to #08-09



YISHUN AVE 11

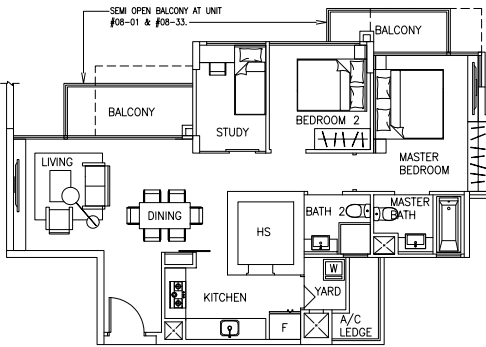
The plans are subject to change as may be required or approved by the relevant authorities. These are not drawn to scale and are for the purpose of a visual representation of the different layouts that are available. All areas are approximate and subject to final survey. The developer and its agents cannot be held liable for any inaccuracies.



Type B7

95 sqm / 1023 sqft

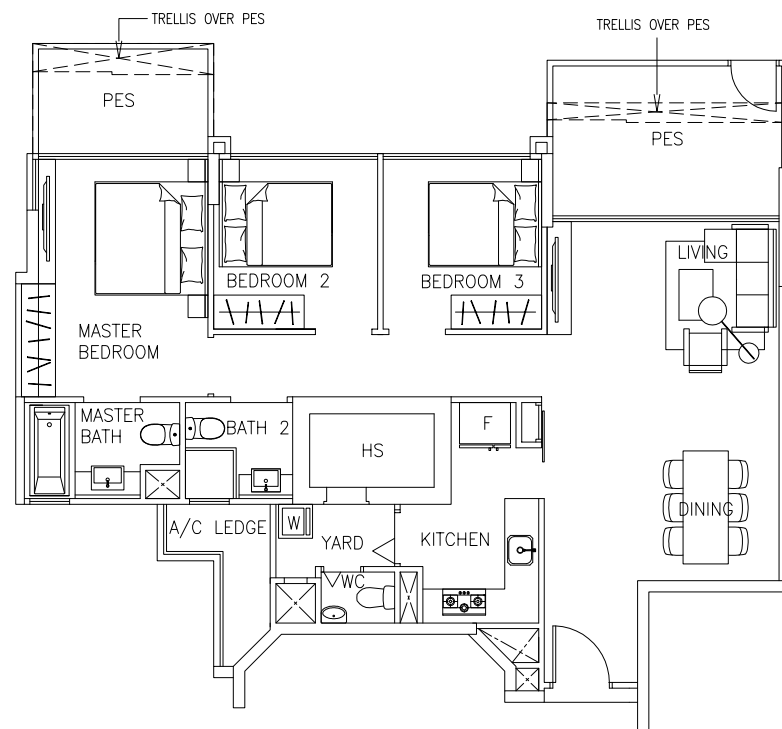
#02-01 to #04-01, #09-01 to #11-01  
#02-33 to #04-33, #09-33 to #11-33



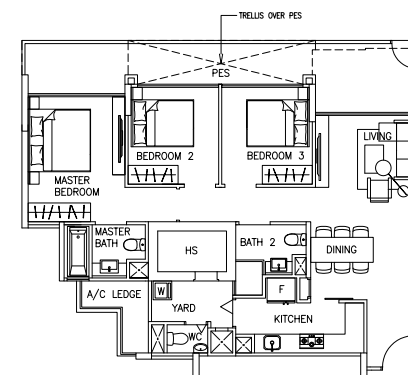
Type B7a

95 sqm / 1023 sqft

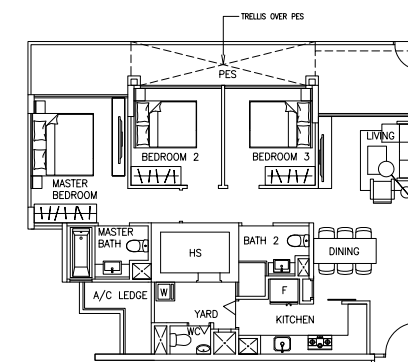
#05-01 to #08-01  
#05-33 to #08-33



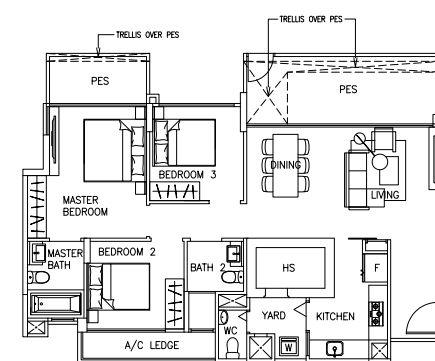
**Type C1a**  
118 sqm / 1270 sqft  
#01-17, #01-18



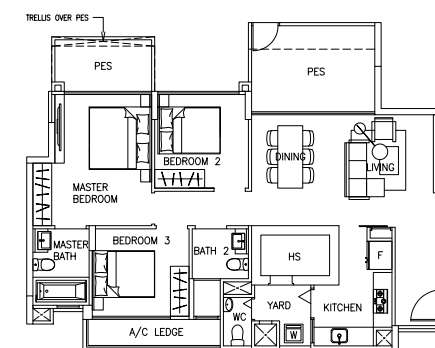
**Type C1b**  
118 sqm / 1270 sqft  
#01-15, #01-20



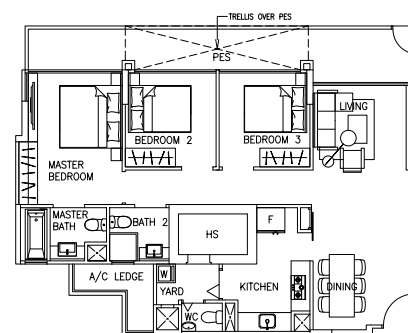
**Type C1c**  
117 sqm / 1259 sqft  
#01-24, #01-29



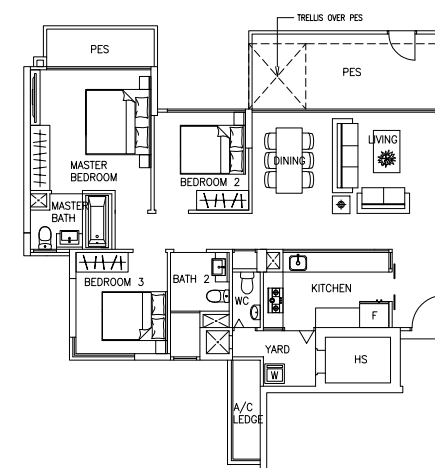
**Type C1d**  
118 sqm / 1270 sqft  
#01-25, #01-28



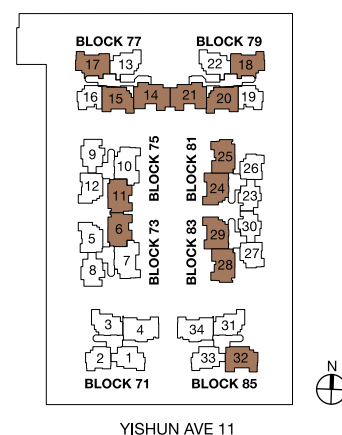
**Type C1e**  
116 sqm / 1249 sqft  
#01-06, #01-11



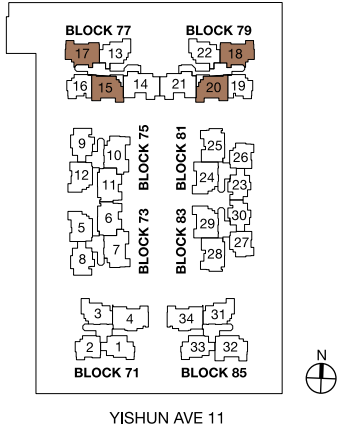
**Type C1f**  
118 sqm / 1270 sqft  
#01-32



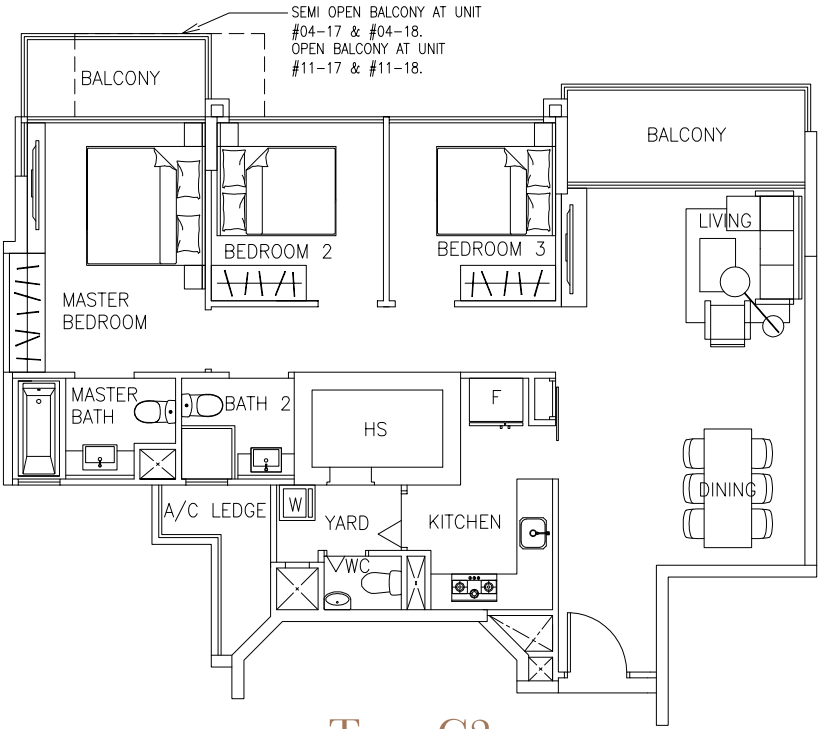
**Type C1g**  
122 sqm / 1313 sqft  
#01-14, #01-21



The plans are subject to change as may be required or approved by the relevant authorities. These are not drawn to scale and are for the purpose of a visual representation of the different layouts that are available. All areas are approximate and subject to final survey. The developer and its agents cannot be held liable for any inaccuracies.



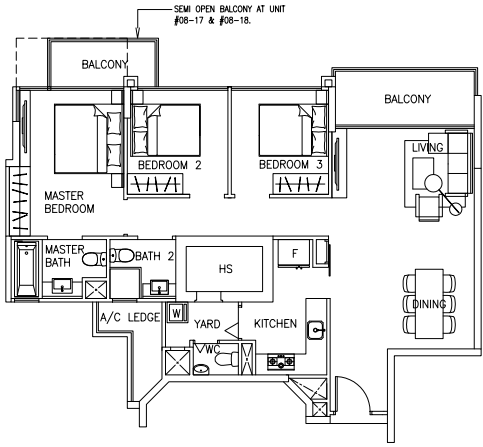
The plans are subject to change as may be required or approved by the relevant authorities. These are not drawn to scale and are for the purpose of a visual representation of the different layouts that are available. All areas are approximate and subject to final survey. The developer and its agents cannot be held liable for any inaccuracies.



Type C2

111 sqm / 1195 sqft

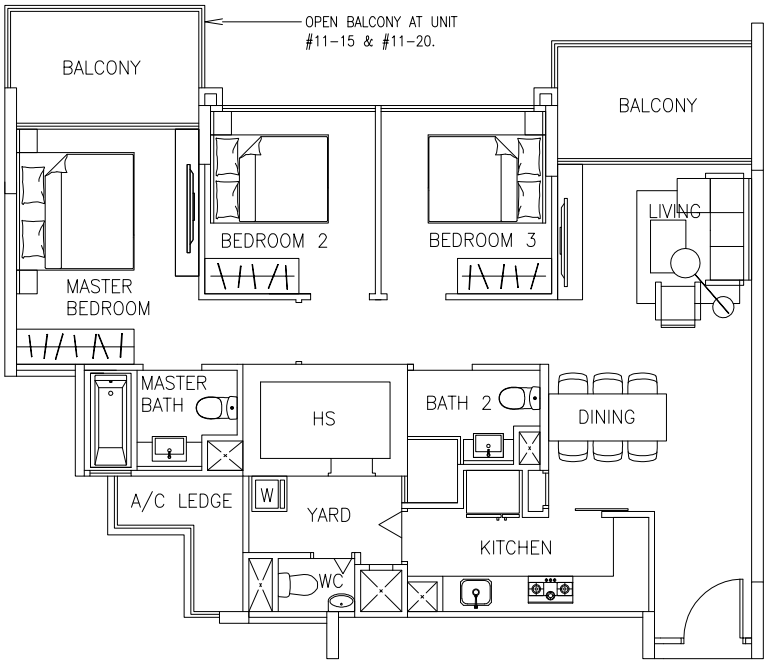
#02-17 to #04-17, #09-17 to #11-17  
#02-18 to #04-18, #09-18 to #11-18



Type C2a

111 sqm / 1195 sqft

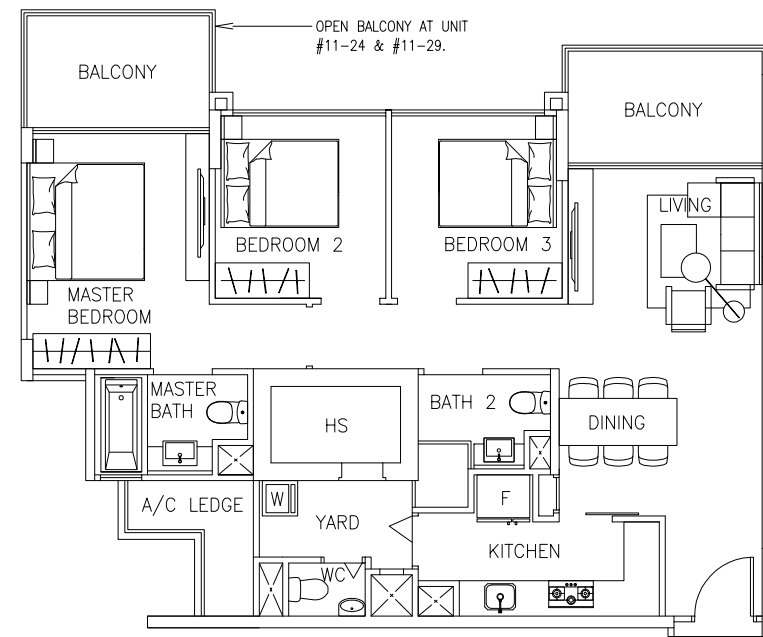
#05-17 to #08-17  
#05-18 to #08-18



Type C3

110 sqm / 1184 sqft

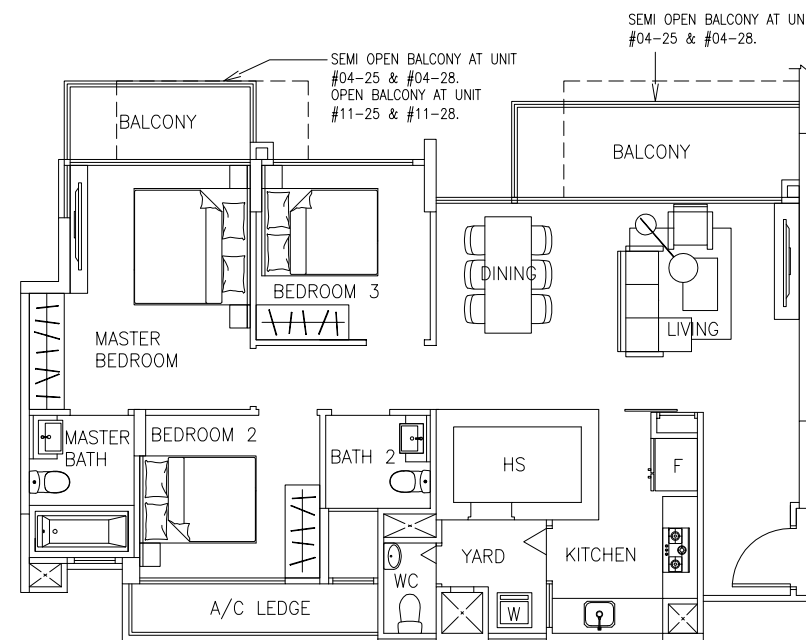
#02-15 to #11-15  
#02-20 to #11-20



### Type C4

109 sqm / 1173 sqft

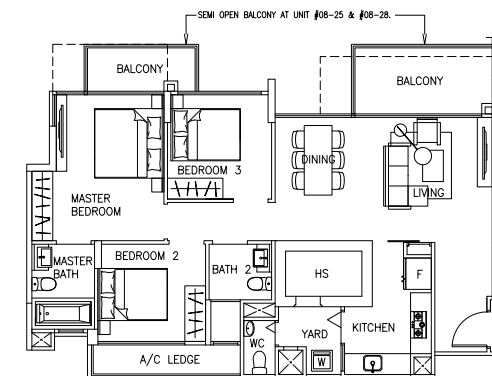
#02-24 to #11-24  
#02-29 to #11-29



### Type C5

111 sqm / 1195 sqft

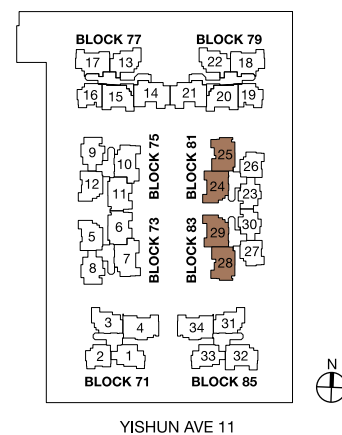
#02-25 to #04-25, #09-25 to #11-25  
#02-28 to #04-28, #09-28 to #11-28



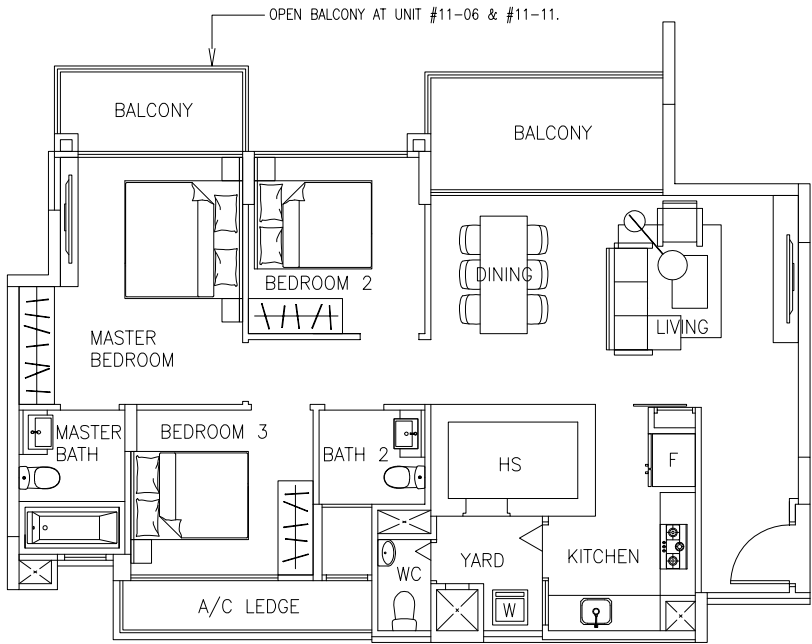
### Type C5a

111 sqm / 1195 sqft

#05-25 to #08-25  
#05-28 to #08-28



The plans are subject to change as may be required or approved by the relevant authorities. These are not drawn to scale and are for the purpose of a visual representation of the different layouts that are available. All areas are approximate and subject to final survey. The developer and its agents cannot be held liable for any inaccuracies.

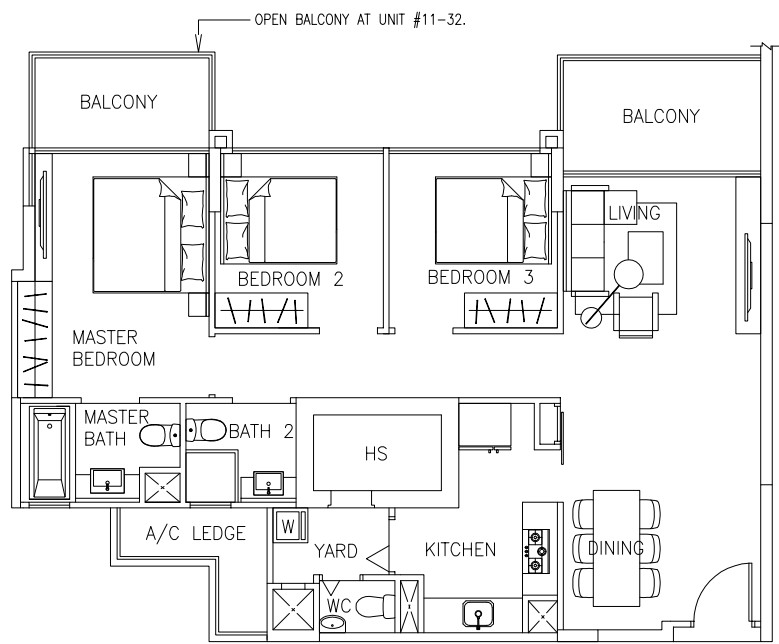


Type C6

112 sqm / 1206 sqft

#02-06 to #11-06

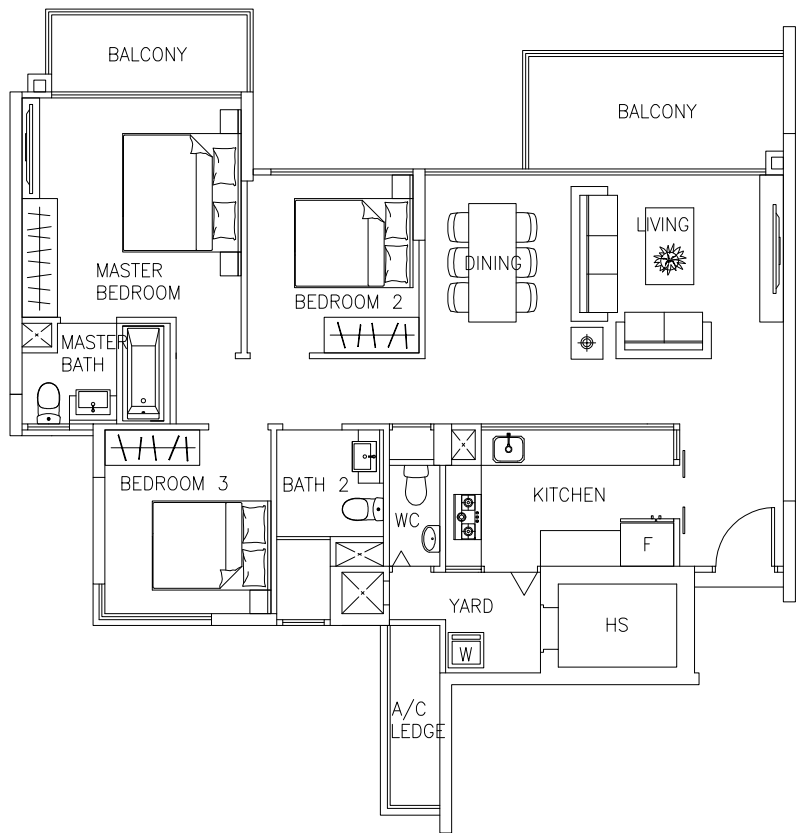
#02-11 to #11-11



Type C7

111 sqm / 1195 sqft

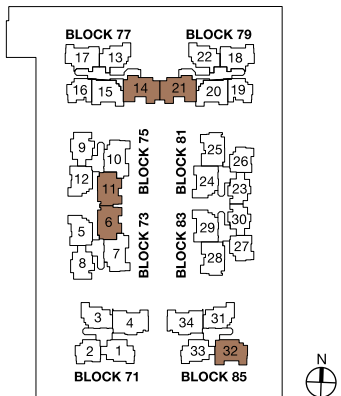
#02-32 to #11-32



Type C8

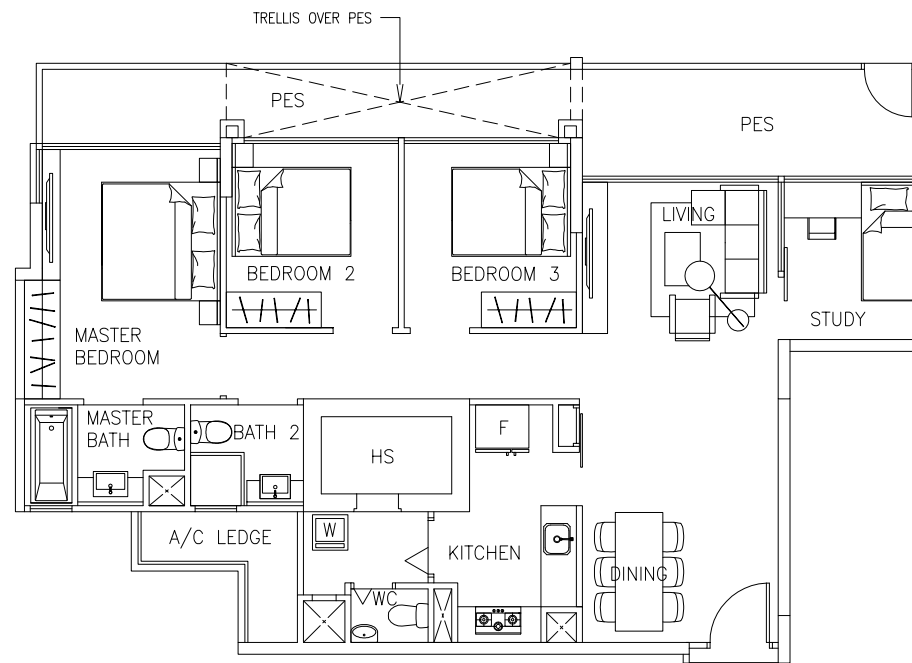
117 sqm / 1259 sqft

#02-14, #02-21



YISHUN AVE 11

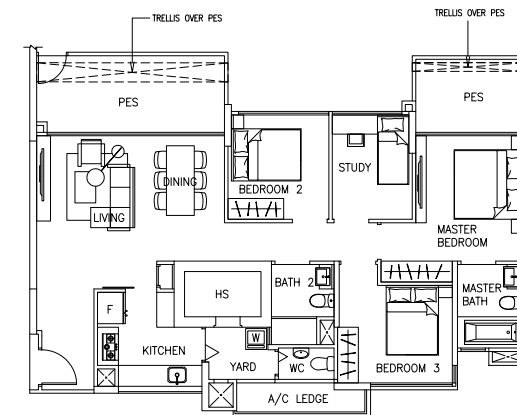
The plans are subject to change as may be required or approved by the relevant authorities. These are not drawn to scale and are for the purpose of a visual representation of the different layouts that are available. All areas are approximate and subject to final survey. The developer and its agents cannot be held liable for any inaccuracies.



### Type D1a

127 sqm / 1367 sqft

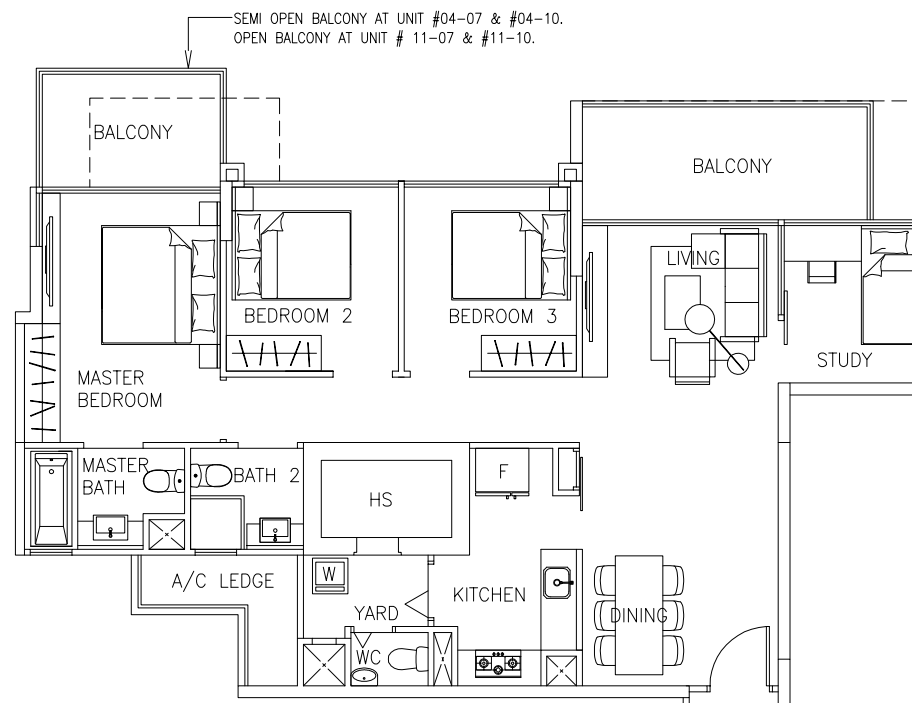
#01-07, #01-10



### Type D1b

126 sqm / 1356 sqft

#01-04, #01-34

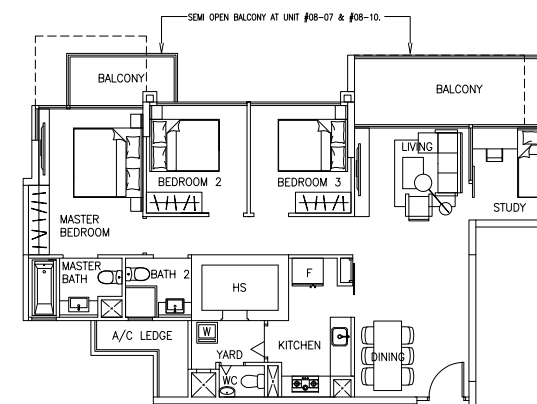


### Type D2

121 sqm / 1302 sqft

#02-07 to #04-07, #09-07 to #11-07

#02-10 to #04-10, #09-10 to #11-10

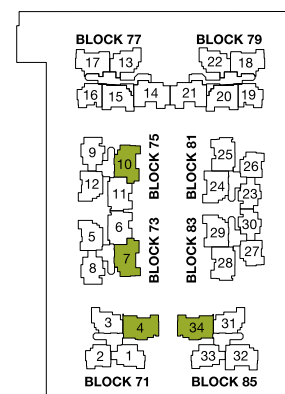


### Type D2-a

121 sqm / 1302 sqft

#05-07 to #08-07

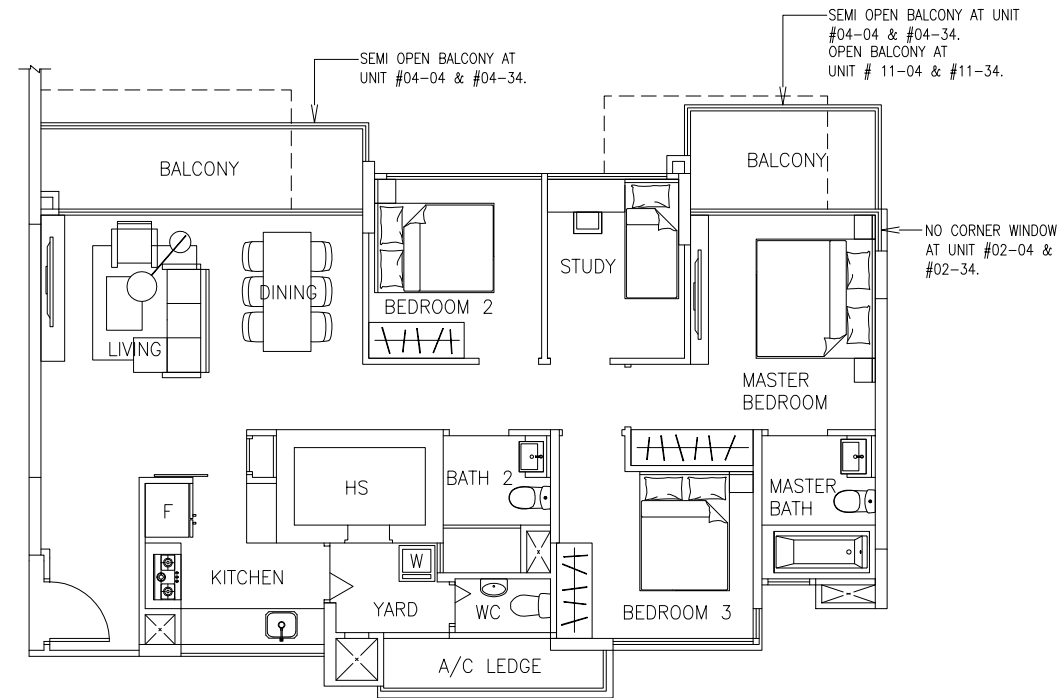
#05-10 to #08-10



YISHUN AVE 11

The plans are subject to change as may be required or approved by the relevant authorities. These are not drawn to scale and are for the purpose of a visual representation of the different layouts that are available. All areas are approximate and subject to final survey. The developer and its agents cannot be held liable for any inaccuracies.

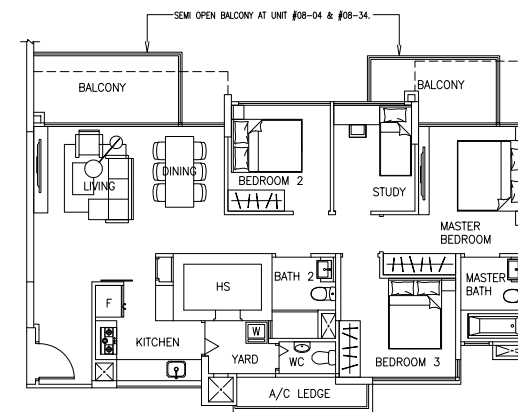




Type D3

120 sqm / 1292 sqft

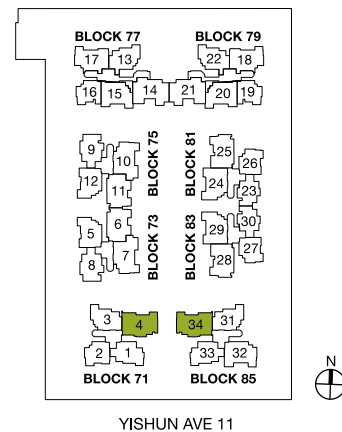
#02-04 to #04-04, #09-04 to #11-04  
#02-34 to #04-34, #09-34 to #11-34



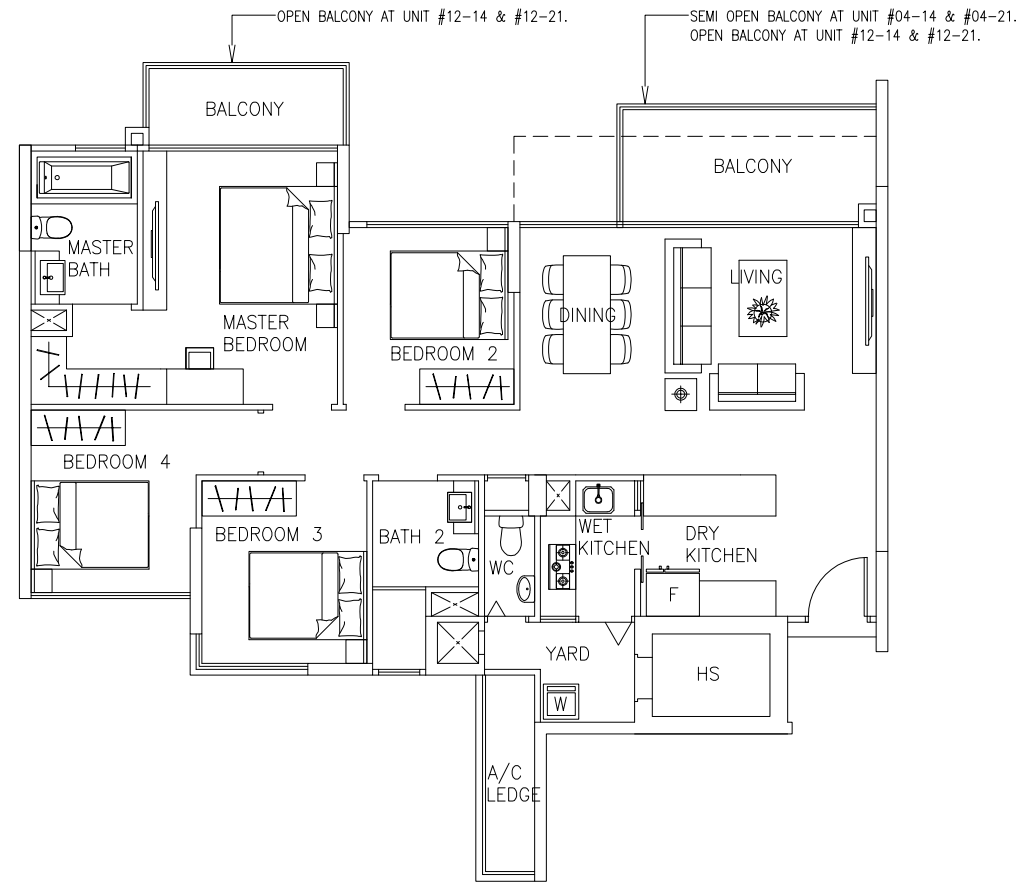
Type D3-a

121 sqm / 1302 sqft

#05-04 to #08-04  
#05-34 to #08-34



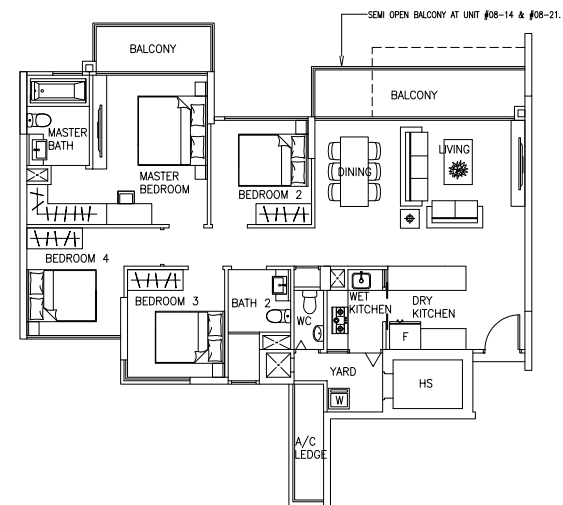
The plans are subject to change as may be required or approved by the relevant authorities. These are not drawn to scale and are for the purpose of a visual representation of the different layouts that are available. All areas are approximate and subject to final survey. The developer and its agents cannot be held liable for any inaccuracies.



## Type E2

131 sqm / 1410 sqft

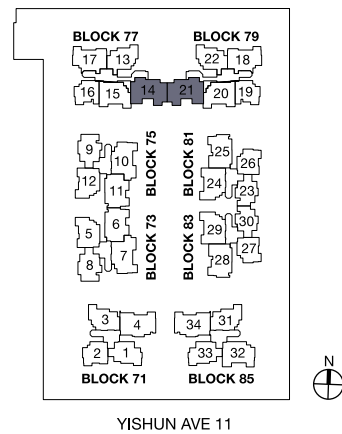
#03-14, #04-14, #09-14 to #12-14  
#03-21, #04-21, #09-21 to #12-21



## Type E2-a

131 sqm / 1410 sqft

#05-14 to #08-14  
#05-21 to #08-21



The plans are subject to change as may be required or approved by the relevant authorities. These are not drawn to scale and are for the purpose of a visual representation of the different layouts that are available. All areas are approximate and subject to final survey. The developer and its agents cannot be held liable for any inaccuracies.