



Unit Distribution Chart

BLOCK 2

STOREY	UNIT	1	2	3	4	5
24	A2a	C9a	B3a	C8a	A2	
23	A2	C9	B3	C8	A2	
22	A2	C9	B3	C8	A2	
21	A2	C9	B3	C8	A2	
20	A2	C9	B3	C8	A2	
19	A2	C9	B3	C8	A2	
18	A2	C9	B3	C8	A2	
17	A2	C9	B3	C8	A2	
16	A2	C9	B3	C8	A2	
15	A2	C9	B3	C8	A2	
14	A2	C9	B3	C8	A2	
13	A2	C9	B3	C8	A2	
12	A2	C9	B3	C8	A2	
11	A2	C9	B3	C8	A2	
10	A2	C9	B3	C8	A2	
9	A2	C9	B3	C8	A2	
8	A2	C9	B3	C8	A2	
7	A2	C9	B3	C8	A2	
6	A2	C9	B3	C8	A2	
5	A2	C9	B3	C8	A2	
4	A2	C9	B3	C8	A2	
3	A2	C9	B3	C8	A2	
2	A2	C9	B3	C8	A2	
1	A2P	C9P	B3P	C8P	A2P	

BLOCK 4

STOREY	UNIT	6	7	8	9	10
25	A2	C9b	B3b	C8	A2	
24	A2	C9b	B3b	C8	A2	
23	A2	C9	B3	C8	A2	
22	A2	C9	B3	C8	A2	
21	A2	C9	B3	C8	A2	
20	A2	C9	B3	C8	A2	
19	A2	C9	B3	C8	A2	
18	A2	C9	B3	C8	A2	
17	A2	C9	B3	C8	A2	
16	A2	C9	B3	C8	A2	
15	A2	C9	B3	C8	A2	
14	A2	C9	B3	C8	A2	
13	A2	C9	B3	C8	A2	
12	A2	C9	B3	C8	A2	
11	A2	C9	B3	C8	A2	
10	A2	C9	B3	C8	A2	
9	A2	C9	B3	C8	A2	
8	A2	C9	B3	C8	A2	
7	A2	C9	B3	C8	A2	
6	A2	C9	B3	C8	A2	
5	A2	C9	B3	C8	A2	
4	A2	C9	B3	C8	A2	
3	A2	C9	B3	C8	A2	
2	A2	C9	B3	C8	A2	
1	A2P	C9P	B3P	C8P	A2P	

BLOCK 6

STOREY	UNIT	11	12	13	14	15
25	A1	C9c	B3c	C8	A1	
24	A1	C9c	B3c	C8	A1	
23	A1	C9	B3	C8	A1	
22	A1	C9	B3	C8	A1	
21	A1	C9	B3	C8	A1	
20	A1	C9	B3	C8	A1	
19	A1	C9	B3	C8	A1	
18	A1	C9	B3	C8	A1	
17	A1	C9	B3	C8	A1	
16	A1	C9	B3	C8	A1	
15	A1	C9	B3	C8	A1	
14	A1	C9	B3	C8	A1	
13	A1	C9	B3	C8	A1	
12	A1	C9	B3	C8	A1	
11	A1	C9	B3	C8	A1	
10	A1	C9	B3	C8	A1	
9	A1	C9	B3	C8	A1	
8	A1	C9	B3	C8	A1	
7	A1	C9	B3	C8	A1	
6	A1	C9	B3	C8	A1	
5	A1	C9	B3	C8	A1	
4	A1	C9	B3	C8	A1	
3	A1	C9	B3	C8	A1	
2	A1	C9	B3	C8	A1	
1	A1P	C9P	B3P	C8P	A1P	

BLOCK 8

STOREY	UNIT	16	17	18	19	20	21
22	B4	C7	C7	B5	C6	C4	
21	B4	C7	C7	B5	C6	C4	
20	B4	C7	C7	B5	C6	C4	
19	B4	C7	C7	B5	C6	C4	
18	B4	C7	C7	B5	C6	C4	
17	B4	C7	C7	B5	C6	C4	
16	B4	C7	C7	B5	C6	C4	
15	B4	C7	C7	B5	C6	C4	
14	B4	C7	C7	B5	C6	C4	
13	B4	C7	C7	B5	C6	C4	
12	B4	C7	C7	B5	C6	C4	
11	B4	C7	C7	B5	C6	C4	
10	B4	C7	C7	B5	C6	C4	
9	B4	C7	C7	B5	C6	C4	
8	B4	C7	C7	B5	C6	C4	
7	B4	C7	C7	B5	C6	C4	
6	B4	C7	C7	B5	C6	C4	
5	B4	C7	C7	B5	C6	C4	
4	B4	C7	C7	B5	C6	C4	
3	B4	C7	C7	B5	C6	C4	
2	B4	C7	C7	B5	C6	C4	
1	B4P	C7P	C7P	B5P	C6P	C4P	

BLOCK 10

STOREY	UNIT	22	23	24	25	26	27
24	C6	C6c	B5b	D1	D1	B4	
23	C6	C6	B5	D1	D1	B4	
22	C6	C6	B5	D1	D1	B4	
21	C6	C6	B5	D1	D1	B4	
20	C6	C6	B5	D1	D1	B4	
19	C6	C6	B5	D1	D1	B4	
18	C6	C6	B5	D1	D1	B4	
17	C6	C6	B5	D1	D1	B4	
16	C6	C6	B5	D1	D1	B4	
15	C6	C6	B5	D1	D1	B4	
14	C6	C6	B5	D1	D1	B4	
13	C6	C6	B5	D1	D1	B4	
12	C6	C6	B5	D1	D1	B4	
11	C6	C6	B5	D1	D1	B4	
10	C6	C6	B5	D1	D1	B4	
9	C6	C6	B5	D1	D1	B4	
8	C6	C6	B5	D1	D1	B4	
7	C6	C6	B5	D1	D1	B4	
6	C6	C6	B5	D1	D1	B4	
5	C6	C6	B5	D1	D1	B4	
4	C6	C6	B5	D1	D1	B4	
3	C6	C6	B5	D1	D1	B4	
2	C6	C6	B5	D1	D1	B4	
1	C6P	C6P	B5P	D1P	D1P	B4P	

BLOCK 12

STOREY	UNIT	28	29	30	31	32	33
24	C6a	C6b	B5a	C7a	C7	B4	
23	C6	C6	B5	C7	C7	B4	
22	C6	C6	B5	C7	C7	B4	
21	C6	C6	B5	C7	C7	B4	
20	C6	C6	B5	C7	C7	B4	
19	C6	C6	B5	C7	C7	B4	
18	C6	C6	B5	C7	C7	B4	
17	C6	C6	B5	C7	C7	B4	
16	C6	C6	B5	C7	C7	B4	
15	C6	C6	B5	C7	C7	B4	
14	C6	C6	B5	C7	C7	B4	
13	C6	C6	B5	C7	C7	B4	
12	C6	C6	B5	C7	C7	B4	
11	C6	C6	B5	C7	C7	B4	
10	C6	C6	B5	C7	C7	B4	
9	C6	C6	B5	C7	C7	B4	
8	C6	C6	B5	C7	C7	B4	
7	C6	C6	B5	C7	C7	B4	
6	C6	C6	B5	C7	C7	B4	
5	C6	C6	B5	C7	C7	B4	
4	C6	C6	B5	C7	C7	B4	
3	C6	C6	B5	C7	C7	B4	
2	C6	C6	B5	C7	C7	B4	
1	C6P	C6P	B5P	C7P	C7P	B4P	

BLOCK 14

STOREY \ UNIT	34	35	36	37	38
25	B1b	D4	B3	D3a	B1a
24	B1b	D4	B3	D3a	B1a
23	B1	D4	B3	D3	B1
22	B1	D4	B3	D3	B1
21	B1	D4	B3	D3	B1
20	B1	D4	B3	D3	B1
19	B1	D4	B3	D3	B1
18	B1	D4	B3	D3	B1
17	B1	D4	B3	D3	B1
16	B1	D4	B3	D3	B1
15	B1	D4	B3	D3	B1
14	B1	D4	B3	D3	B1
13	B1	D4	B3	D3	B1
12	B1	D4	B3	D3	B1
11	B1	D4	B3	D3	B1
10	B1	D4	B3	D3	B1
9	B1	D4	B3	D3	B1
8	B1	D4	B3	D3	B1
7	B1	D4	B3	D3	B1
6	B1	D4	B3	D3	B1
5	B1	D4	B3	D3	B1
4	B1	D4	B3	D3	B1
3	B1	D4	B3	D3	B1
2	B1	D4	B3	D3	B1
1		D4P	A4P	D3P	

BLOCK 16

STOREY \ UNIT	39	40	41	42
21	C3	D5	B2	E1
20	C3	D5	B2	E1
19	C3	D5	B2	E1
18	C3	D5	B2	E1
17	C3	D5	B2	E1
16	C3	D5	B2	E1
15	C3	D5	B2	E1
14	C3	D5	B2	E1
13	C3	D5	B2	E1
12	C3	D5	B2	E1
11	C3	D5	B2	E1
10	C3	D5	B2	E1
9	C3	D5	B2	E1
8	C3	D5	B2	E1
7	C3	D5	B2	E1
6	C3	D5	B2	E1
5	C3	D5	B2	E1
4	C3	D5	B2	E1
3	C3	D5	B2	E1
2	C3	D5	B2	E1
1		D5P	A3P	E1P

BLOCK 18

STOREY \ UNIT	43	44	45	46
21	C3	D2	B2	D5
20	C3	D2	B2	D5
19	C3	D2	B2	D5
18	C3	D2	B2	D5
17	C3	D2	B2	D5
16	C3	D2	B2	D5
15	C3	D2	B2	D5
14	C3	D2	B2	D5
13	C3	D2	B2	D5
12	C3	D2	B2	D5
11	C3	D2	B2	D5
10	C3	D2	B2	D5
9	C3	D2	B2	D5
8	C3	D2	B2	D5
7	C3	D2	B2	D5
6	C3	D2	B2	D5
5	C3	D2	B2	D5
4	C3	D2	B2	D5
3	C3	D2	B2	D5
2	C3	D2	B2	D5
1		D2P	A3P	D5P

LEGEND

- 1-BEDROOM
- 1 + STUDY
- 2-BEDROOM
- 2 + STUDY
- 3-BEDROOM
- 3 + FLEXROOM
- 4-BEDROOM
- 4 + FLEXROOM
- 5-BEDROOM

BLOCK 20

STOREY \ UNIT	47	48	49	50
20	C5	C1	C2	C2
19	C5	C1	C2	C2
18	C5	C1	C2	C2
17	C5	C1	C2	C2
16	C5	C1	C2	C2
15	C5	C1	C2	C2
14	C5	C1	C2	C2
13	C5	C1	C2	C2
12	C5	C1	C2	C2
11	C5	C1	C2	C2
10	C5	C1	C2	C2
9	C5	C1	C2	C2
8	C5	C1	C2	C2
7	C5	C1	C2	C2
6	C5	C1	C2	C2
5	C5P	C1P	C2P	C2P

BLOCK 22

STOREY \ UNIT	51	52	53	54
20	C2	C2	C1	C5
19	C2	C2	C1	C5
18	C2	C2	C1	C5
17	C2	C2	C1	C5
16	C2	C2	C1	C5
15	C2	C2	C1	C5
14	C2	C2	C1	C5
13	C2	C2	C1	C5
12	C2	C2	C1	C5
11	C2	C2	C1	C5
10	C2	C2	C1	C5
9	C2	C2	C1	C5
8	C2	C2	C1	C5
7	C2	C2	C1	C5
6	C2	C2	C1	C5
5	C2P	C2P	C1P	C5P

BLOCK 24

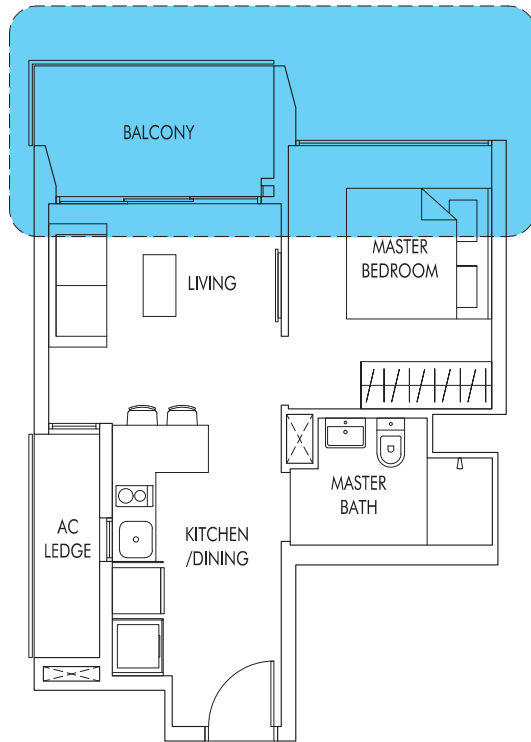
STOREY \ UNIT	55	56	57	58
19	C5	C1	C2	C2
18	C5	C1	C2	C2
17	C5	C1	C2	C2
16	C5	C1	C2	C2
15	C5	C1	C2	C2
14	C5	C1	C2	C2
13	C5	C1	C2	C2
12	C5	C1	C2	C2
11	C5	C1	C2	C2
10	C5	C1	C2	C2
9	C5	C1	C2	C2
8	C5	C1	C2	C2
7	C5	C1	C2	C2
6	C5	C1	C2	C2
5	C5P	C1P	C2P	C2P

BLOCK 26

STOREY \ UNIT	59	60	61	62
19	C2	C2	C1	C5
18	C2	C2	C1	C5
17	C2	C2	C1	C5
16	C2	C2	C1	C5
15	C2	C2	C1	C5
14	C2	C2	C1	C5
13	C2	C2	C1	C5
12	C2	C2	C1	C5
11	C2	C2	C1	C5
10	C2	C2	C1	C5
9	C2	C2	C1	C5
8	C2	C2	C1	C5
7	C2	C2	C1	C5
6	C2	C2	C1	C5
5	C2P	C2P	C1P	C5P



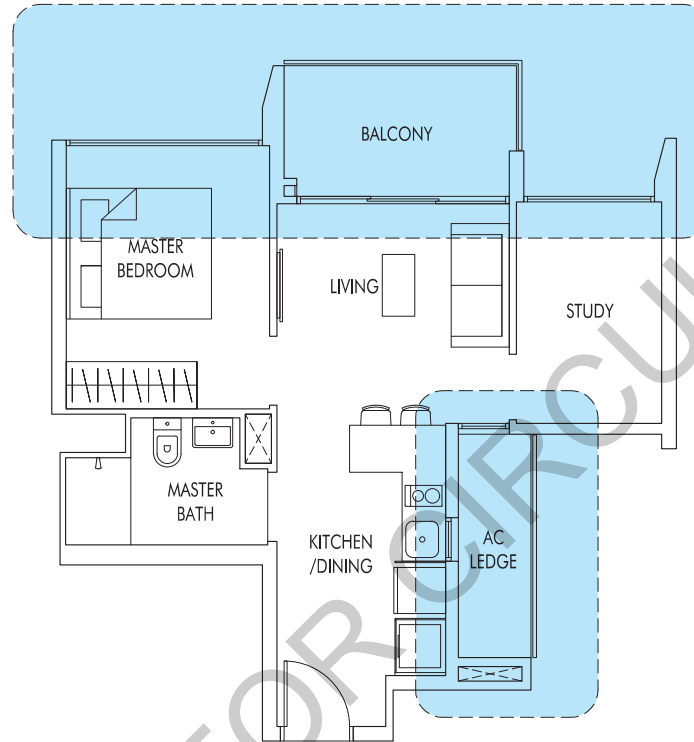
1 Bedroom / 1 + Study



TYPE A1

46 sq m | 495 sq ft

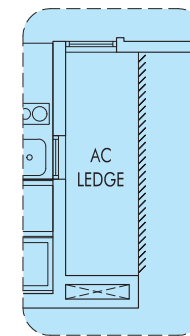
#02-11 to #25-11 (mirror)
#02-15 to #25-15



TYPE A2

53 sq m | 570 sq ft

#02-01 to #23-01
#02-05 to #24-05 (mirror)
#02-06 to #25-06
#02-10 to #25-10 (mirror)

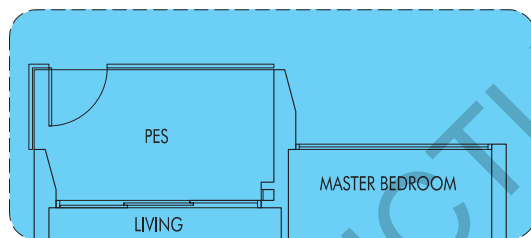


TYPE A2a

53 sq m | 570 sq ft

WITH VERTICAL LOUVERS
AS PER DSTA REQUIREMENT

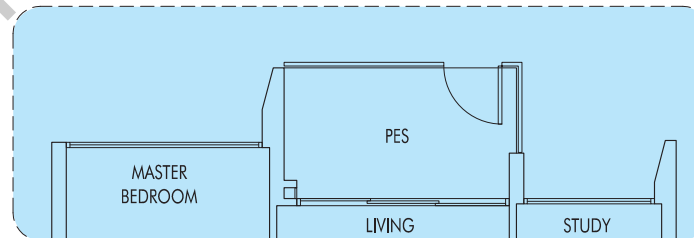
#24-01



TYPE A1P

46 sq m | 495 sq ft
(including PES of 6 sq m/65 sq ft)

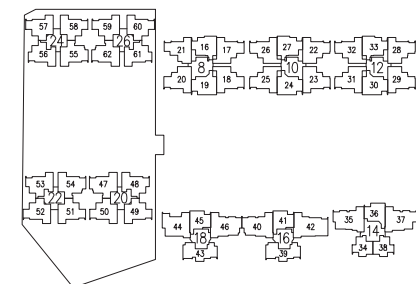
#01-11 (mirror)
#01-15



TYPE A2P

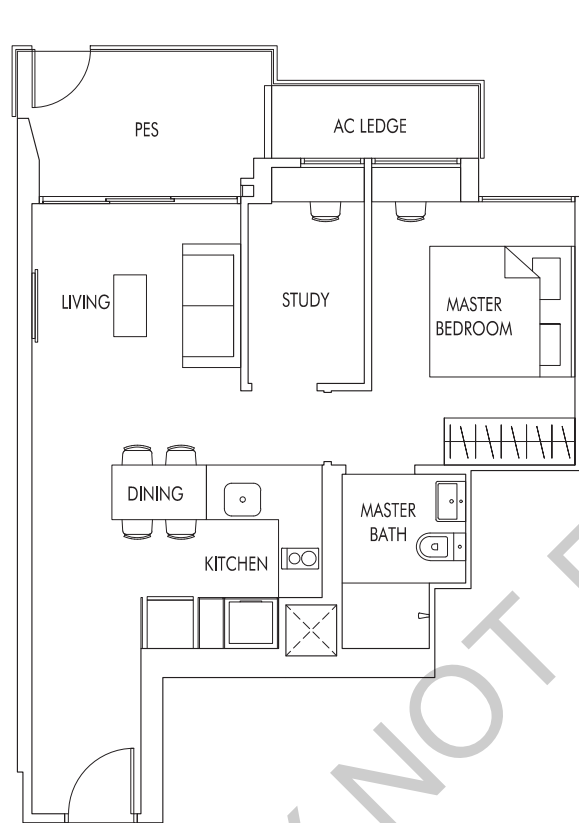
53 sq m | 570 sq ft
(including PES of 6 sq m/65 sq ft)

#01-01
#01-05 (mirror)
#01-06
#01-10 (mirror)



1 + Study

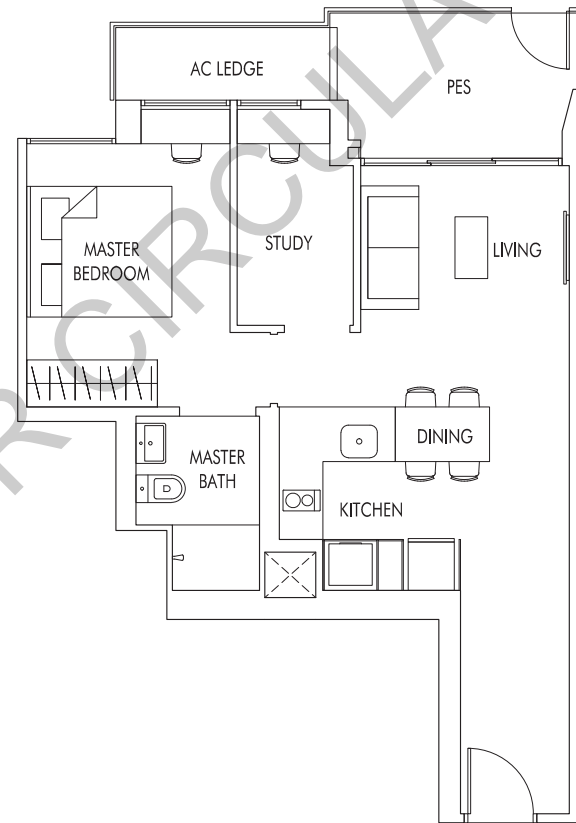
"Our first nest in Singapore's Biggest EC project!
The 1st EC to feature 1-Bedroom and 1+Study!"



TYPE A3P

59 sq m | 635 sq ft
(including PES of 7 sq m/75 sq ft)

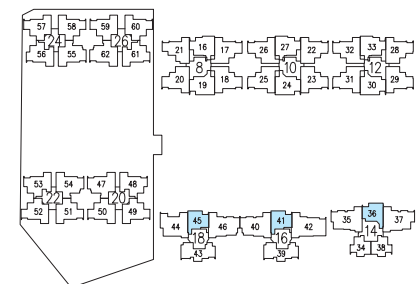
#01-41
#01-45



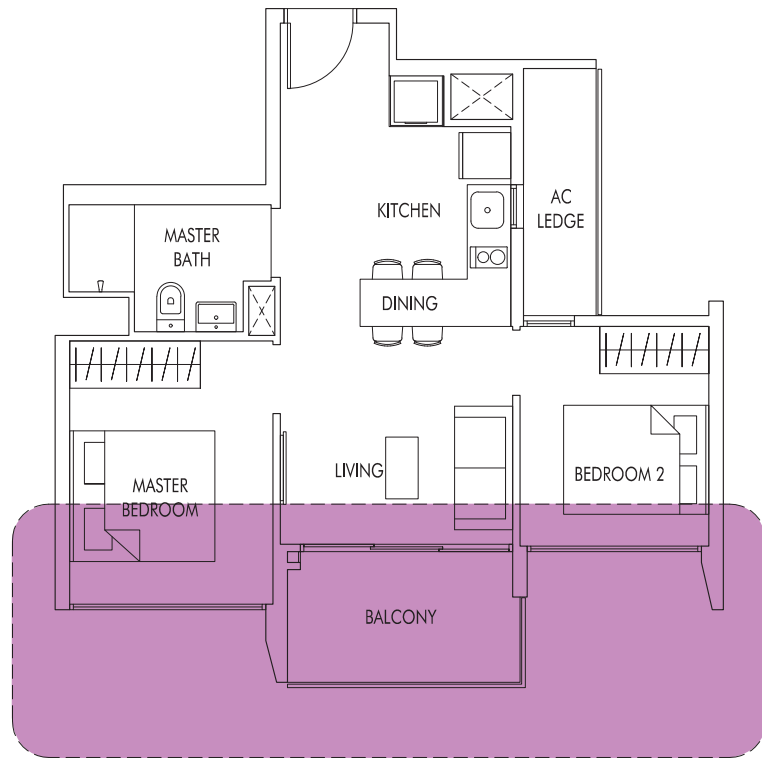
TYPE A4P

60 sq m | 646 sq ft
(including PES of 7 sq m/75 sq ft)

#01-36



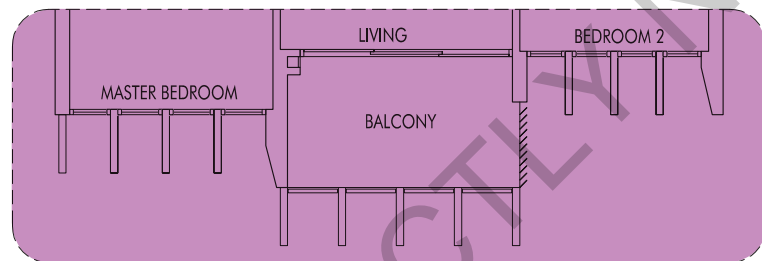
2 Bedroom



TYPE B1

57 sq m | 614 sq ft

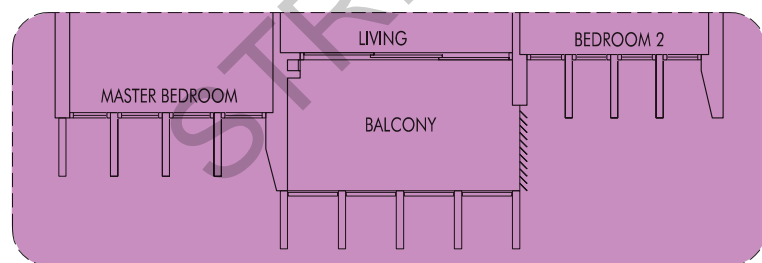
#02-34 to #23-34 (mirror)
#02-38 to #23-38



TYPE B1a

57 sq m | 614 sq ft
WITH VERTICAL LOUVERS & FINS
AS PER DSTA REQUIREMENT

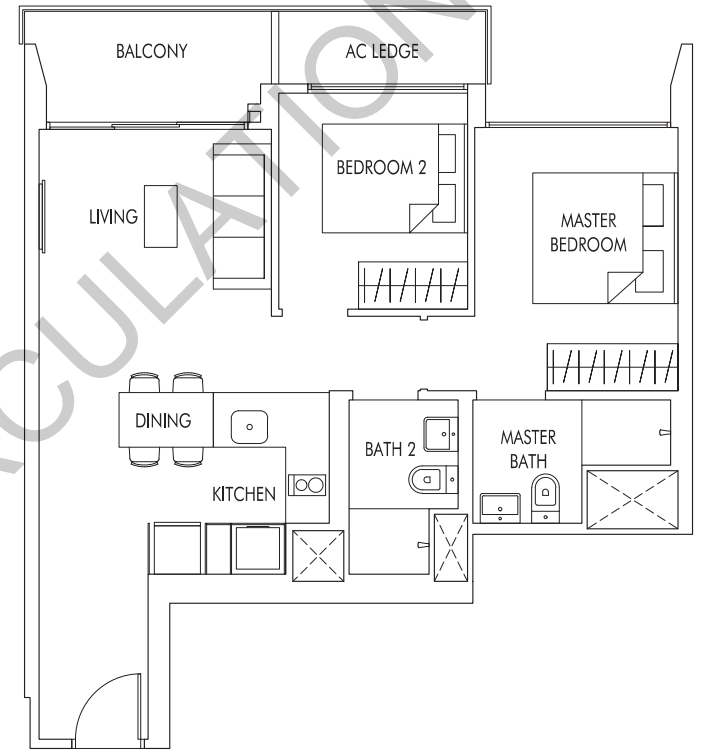
#24-38
#25-38



TYPE B1b

57 sq m | 614 sq ft
WITH VERTICAL LOUVERS & FINS
AS PER DSTA REQUIREMENT

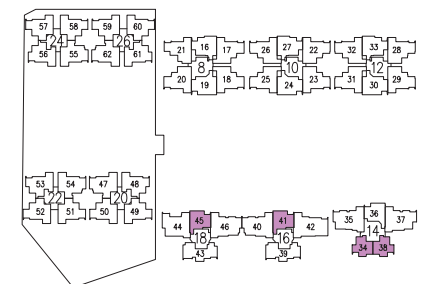
#24-34 (mirror)
#25-34 (mirror)



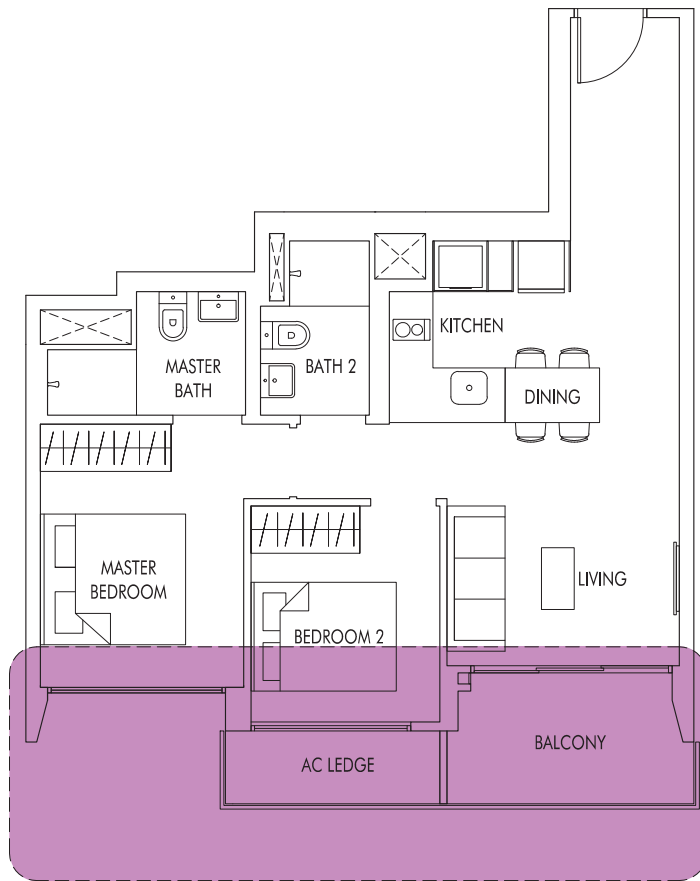
TYPE B2

66 sq m | 710 sq ft

#02-41 to #21-41
#02-45 to #21-45



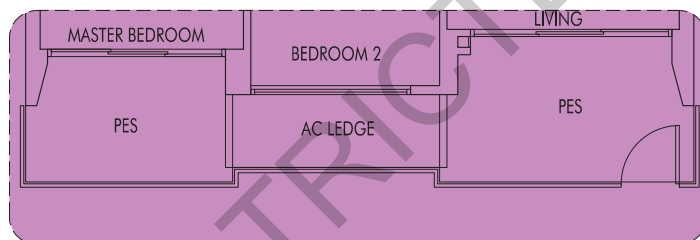
2 Bedroom



TYPE B3

68 sq m | 732 sq ft

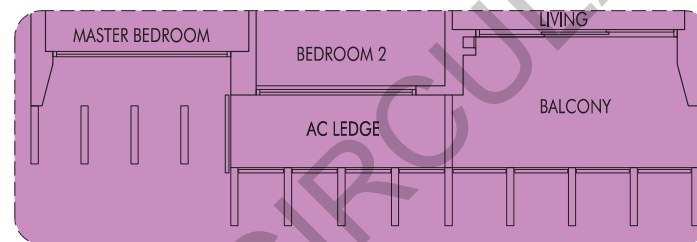
#02-03 to #23-03
 #02-08 to #23-08
 #02-13 to #23-13
 #02-36 to #25-36 (mirror)



TYPE B3P

74 sq m | 797 sq ft
 (including PES of 12 sq m/129 sq ft)

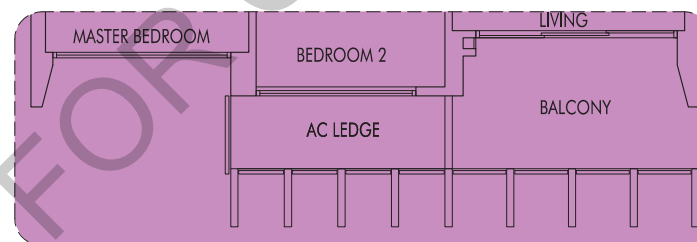
#01-03
 #01-08
 #01-13



TYPE B3a

68 sq m | 732 sq ft
 WITH VERTICAL LOUVERS & FINS
 AS PER DSTA REQUIREMENT

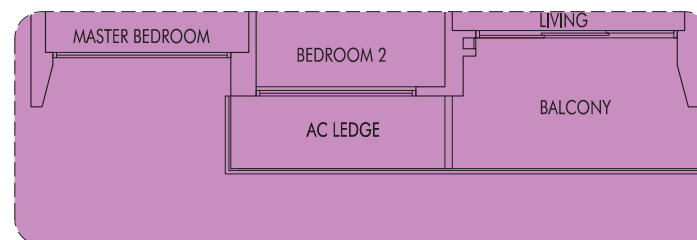
#24-03



TYPE B3b

68 sq m | 732 sq ft
 WITH VERTICAL LOUVERS & FINS
 AS PER DSTA REQUIREMENT

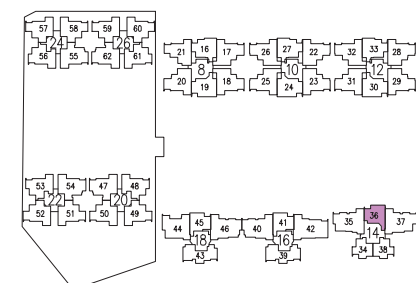
#24-08
 #25-08



TYPE B3c

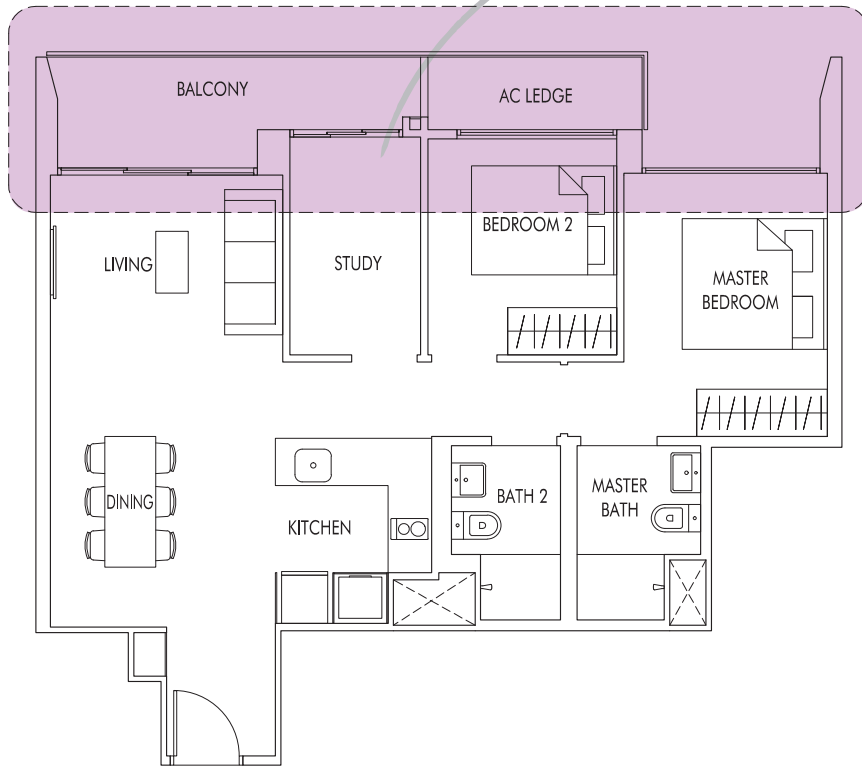
68 sq m | 732 sq ft
 WITH VERTICAL LOUVERS
 AS PER DSTA REQUIREMENT

#24-13
 #25-13



2 + Study

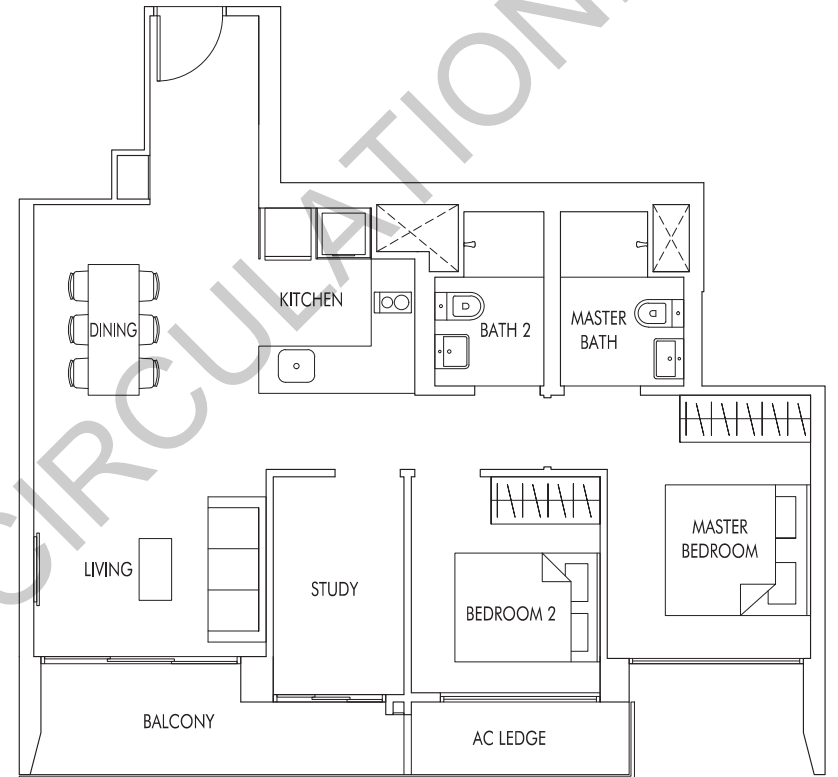
"I can turn the extra room into an office, allowing me to keep an eye on my toddler at home."



TYPE B4

79 sq m | 850 sq ft

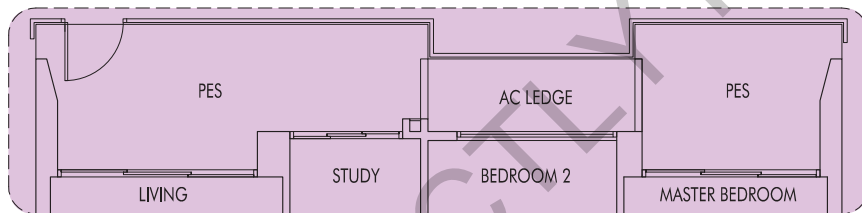
#02-16 to #22-16 (mirror)
#02-27 to #24-27
#02-33 to #24-33



TYPE B5

81 sq m | 872 sq ft

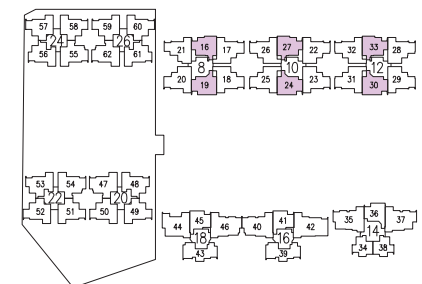
#02-19 to #22-19 (mirror)
#02-24 to #23-24
#02-30 to #23-30



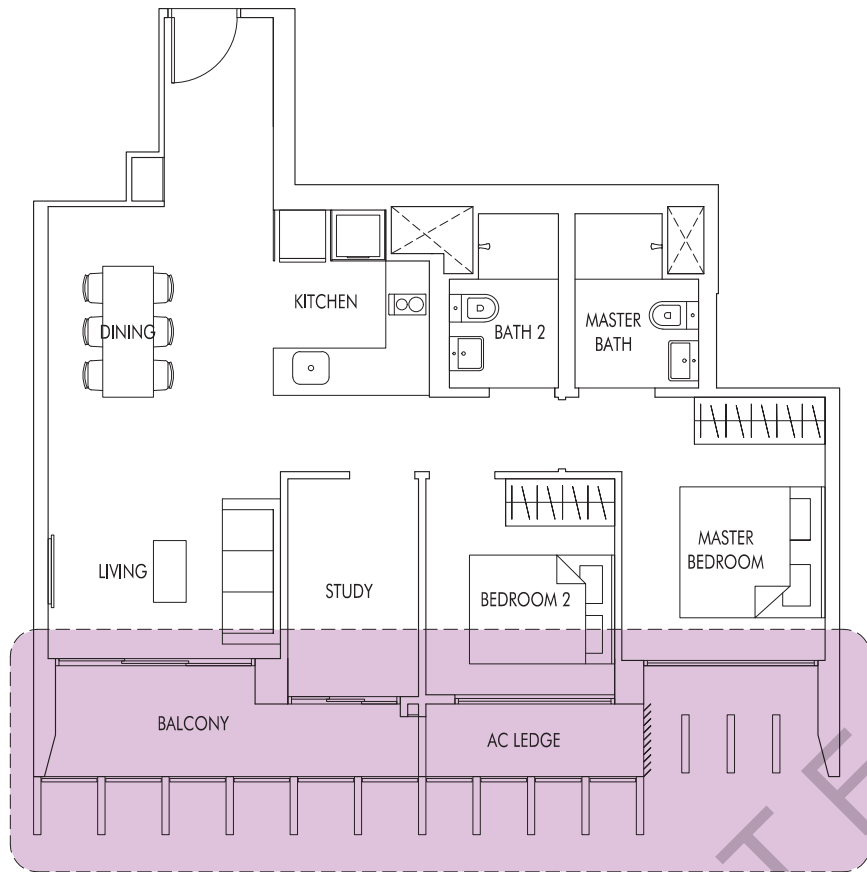
TYPE B4P

87 sq m | 936 sq ft
(including PES of 15 sq m/161 sq ft)

#01-16 (mirror)
#01-27
#01-33

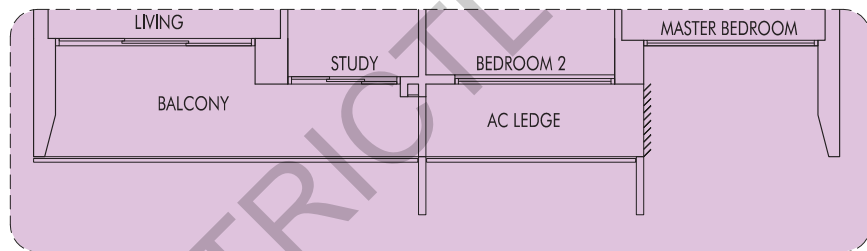


2 Bedroom / 2 + Study



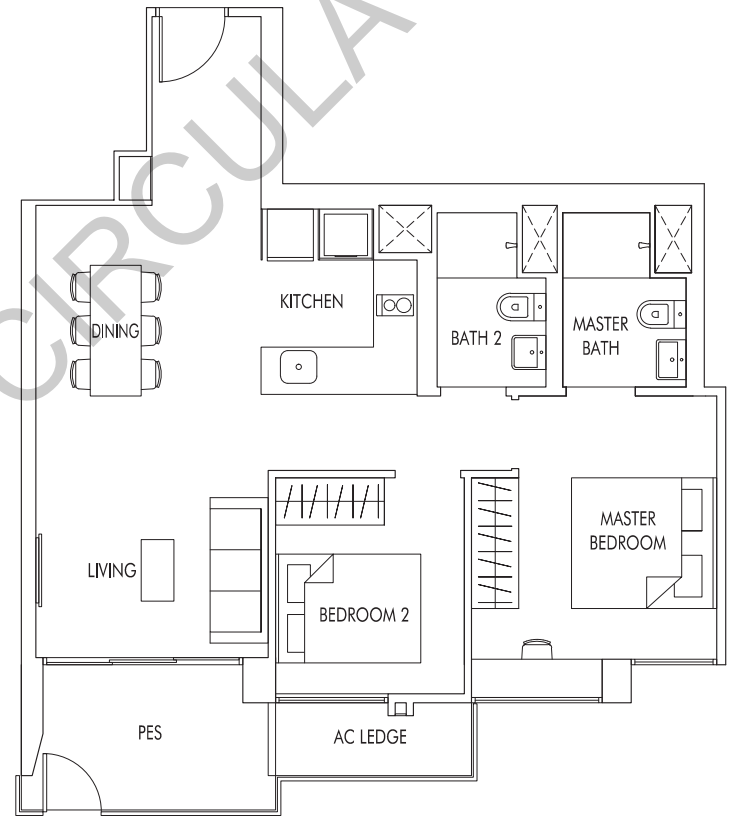
TYPE B5a
81 sq m | 872 sq ft
WITH VERTICAL LOUVERS & FINS
AS PER DSTA REQUIREMENT

#24-30



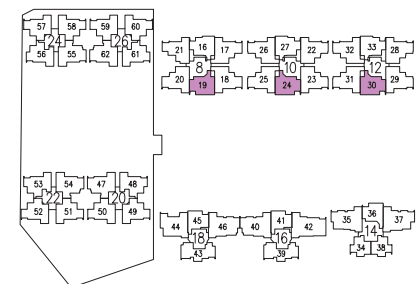
TYPE B5b
81 sq m | 872 sq ft
WITH VERTICAL LOUVERS & FINS
AS PER DSTA REQUIREMENT

#24-24

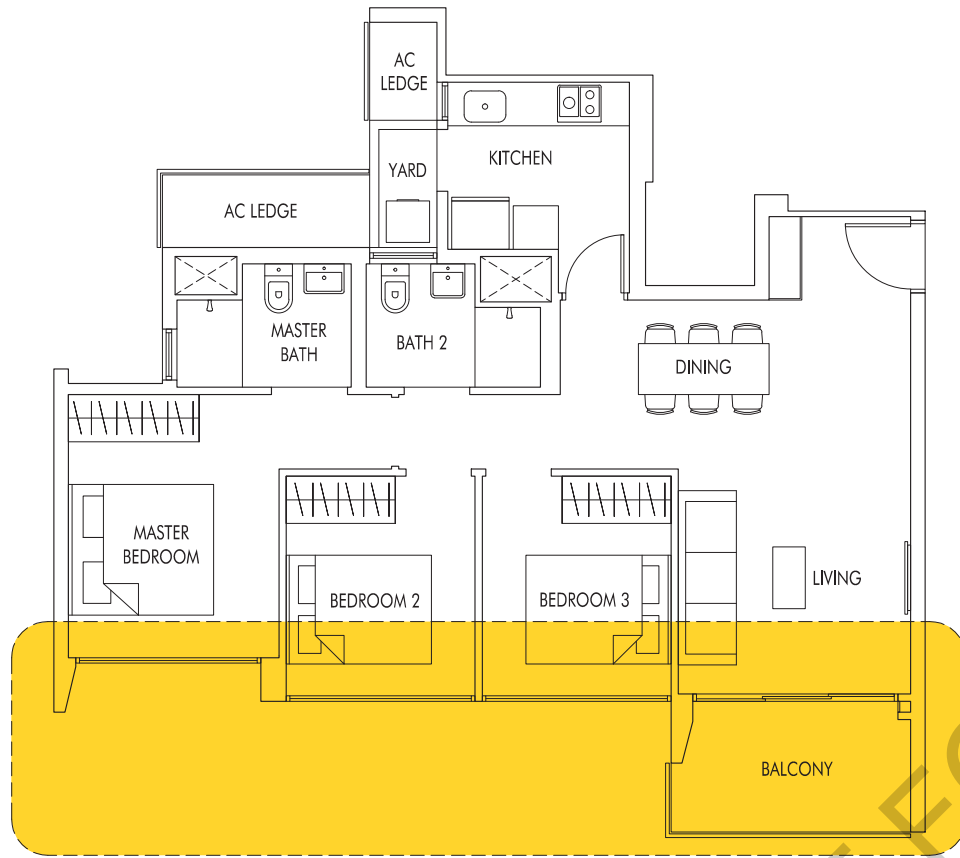


TYPE B5P
75 sq m | 807 sq ft
(including PES of 7 sq m/75 sq ft)

#01-19 (mirror)
#01-24
#01-30



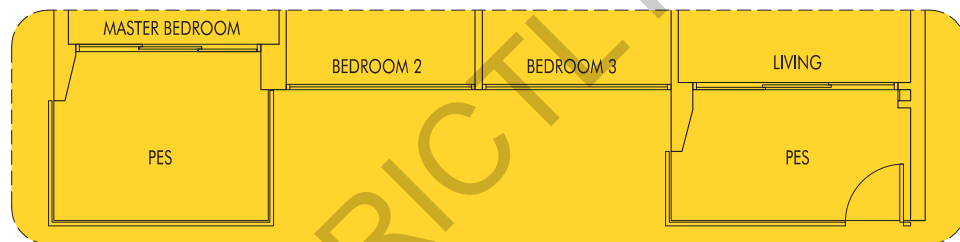
3 Bedroom



TYPE C1

86 sq m | 926 sq ft

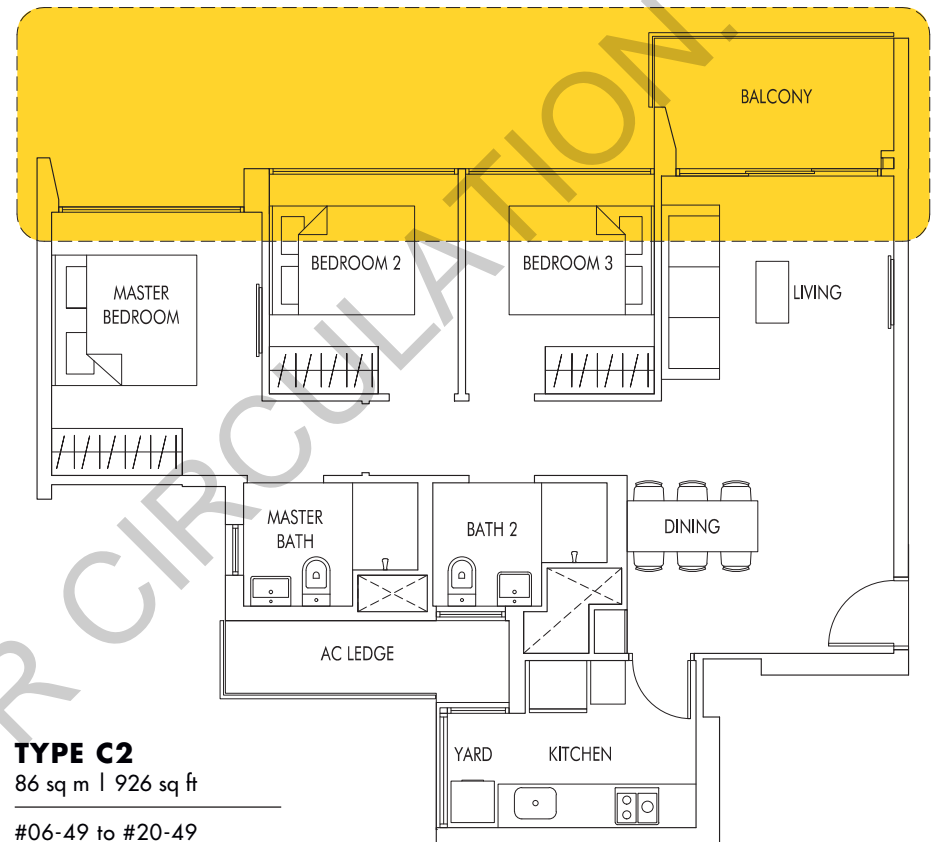
#06-48 to #20-48
#06-53 to #20-53 (mirror)
#06-56 to #19-56
#06-61 to #19-61 (mirror)



TYPE C1P

93 sq m | 1001 sq ft
(including PES of 13 sq m/140 sq ft)

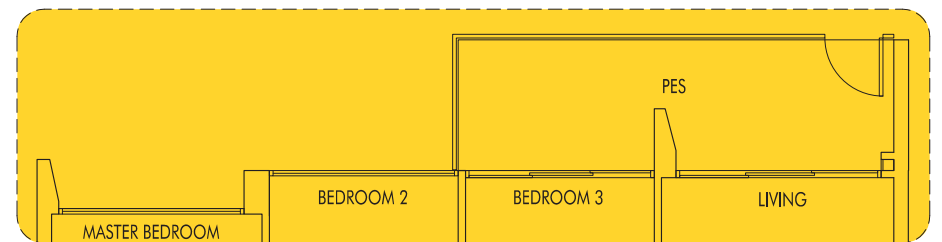
#05-48
#05-53 (mirror)
#05-56
#05-61 (mirror)



TYPE C2

86 sq m | 926 sq ft

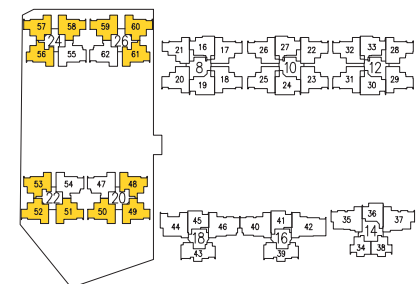
#06-49 to #20-49
#06-50 to #20-50 (mirror)
#06-51 to #20-51
#06-52 to #20-52 (mirror)
#06-57 to #19-57
#06-58 to #19-58 (mirror)
#06-59 to #19-59
#06-60 to #19-60 (mirror)



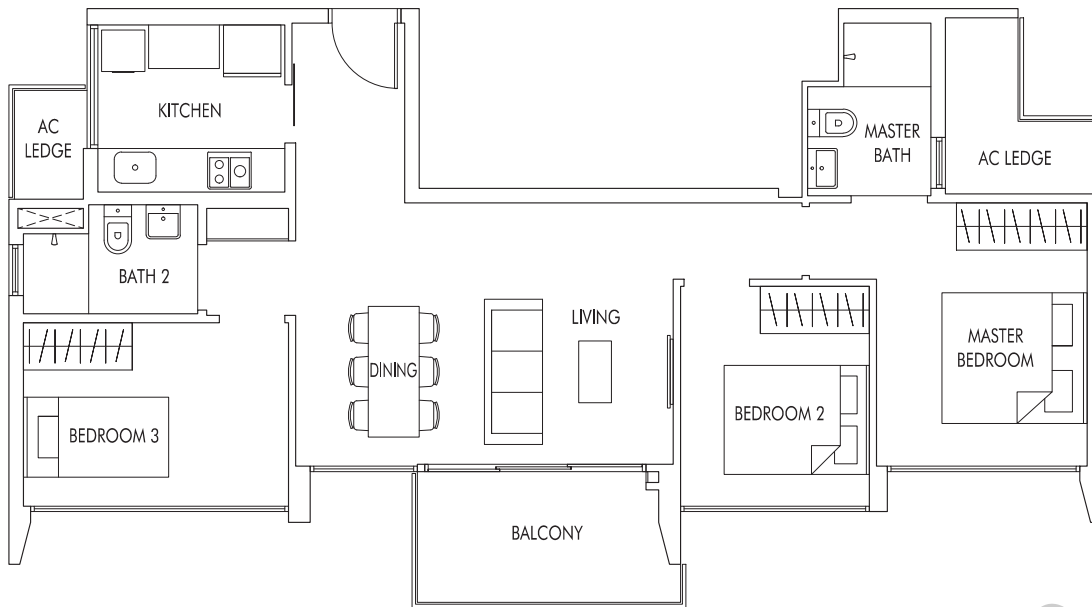
TYPE C2P

91 sq m | 980 sq ft
(including PES of 11 sq m/118 sq ft)

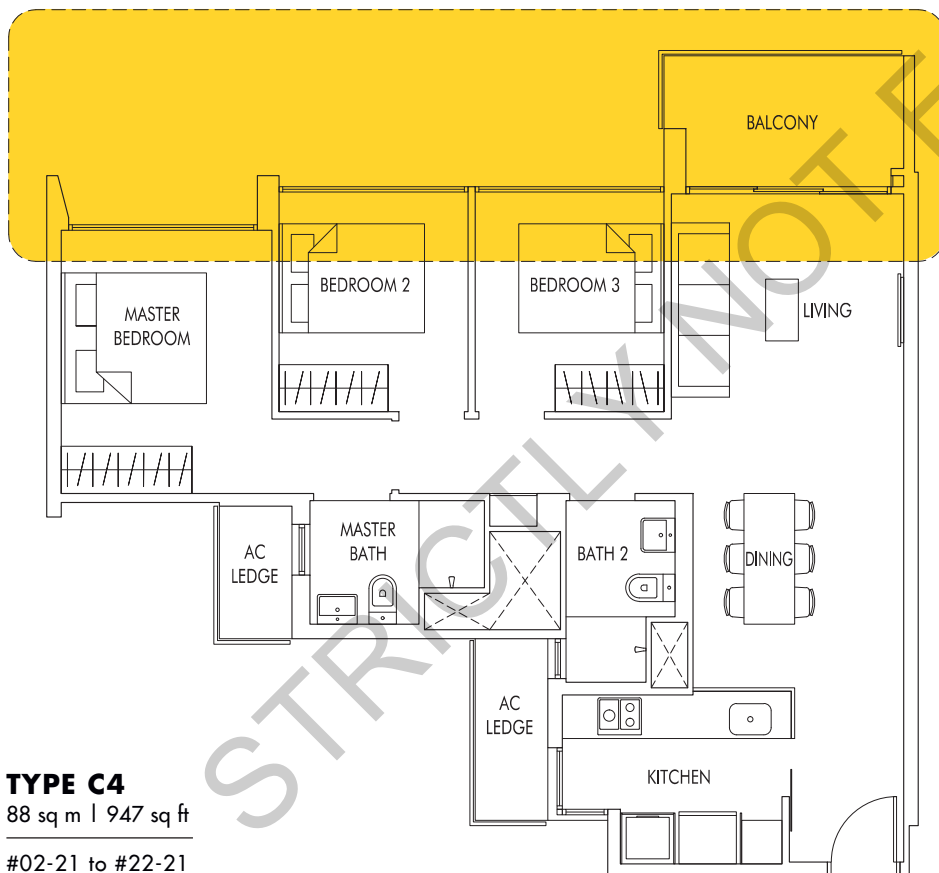
#05-49
#05-50 (mirror)
#05-51
#05-52 (mirror)
#05-57
#05-58 (mirror)
#05-59
#05-60 (mirror)



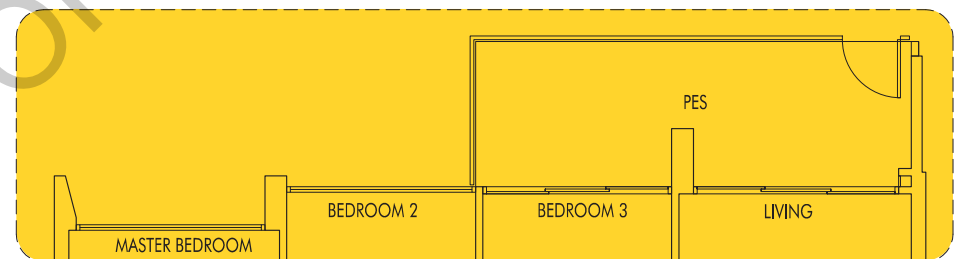
3 Bedroom



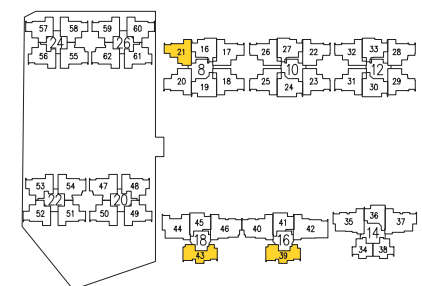
TYPE C3
86 sq m | 926 sq ft
#02-39 to #21-39
#02-43 to #21-43



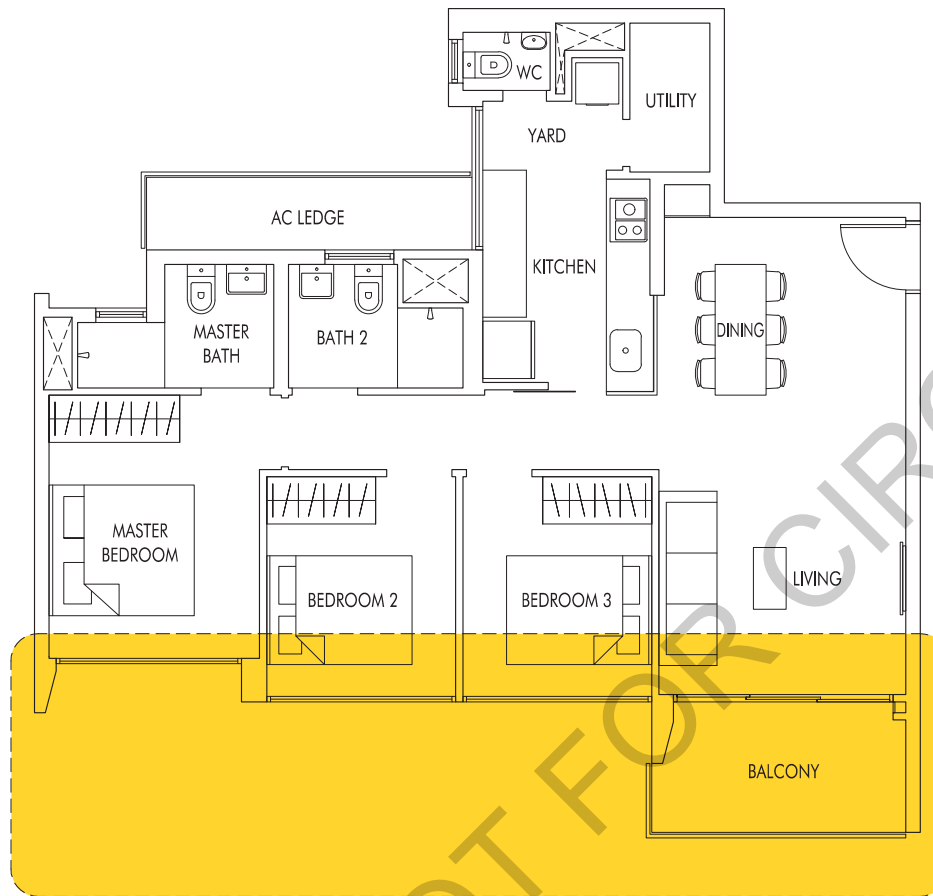
TYPE C4
88 sq m | 947 sq ft
#02-21 to #22-21



TYPE C4P
94 sq m | 1012 sq ft
(including PES of 12 sq m/129 sq ft)
#01-21



3 Bedroom



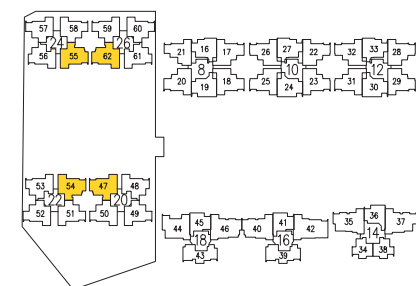
TYPE C5
93 sq m | 1001 sq ft

#06-47 to #20-47 (mirror)
#06-54 to #20-54
#06-55 to #19-55 (mirror)
#06-62 to #19-62

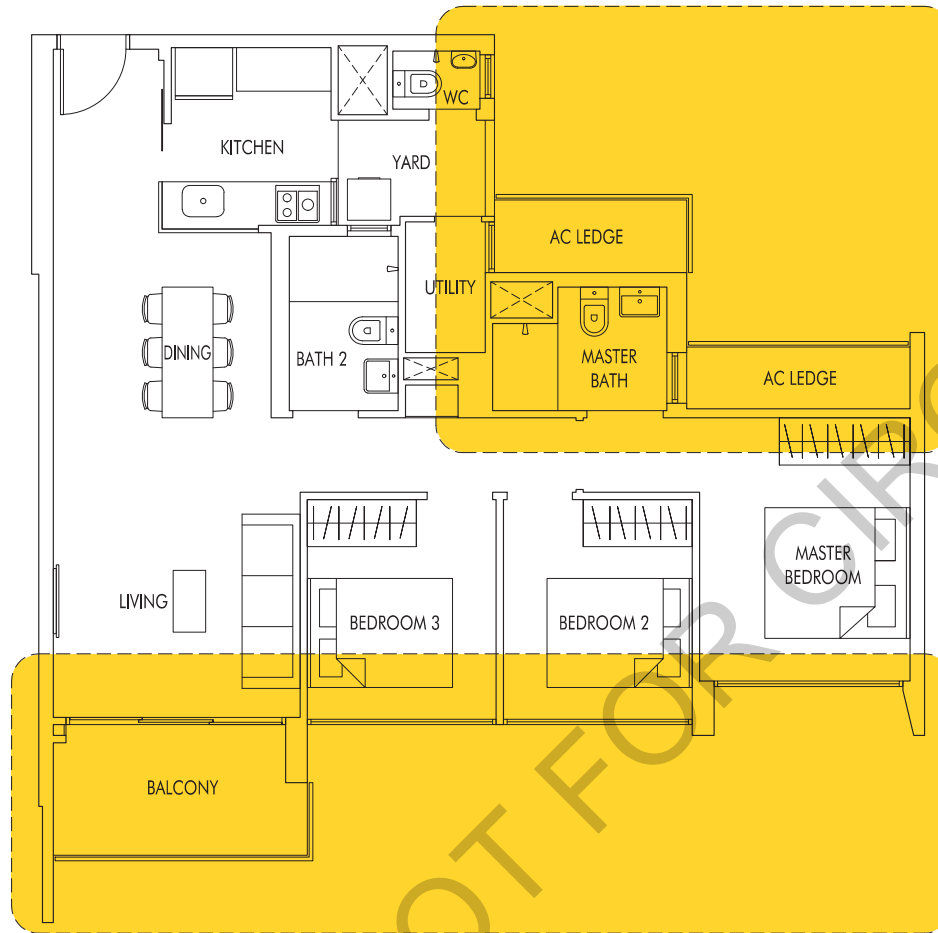


TYPE C5P
100 sq m | 1076 sq ft
(including PES of 13 sq m/140 sq ft)

#05-47 (mirror)
#05-54
#05-55 (mirror)
#05-62



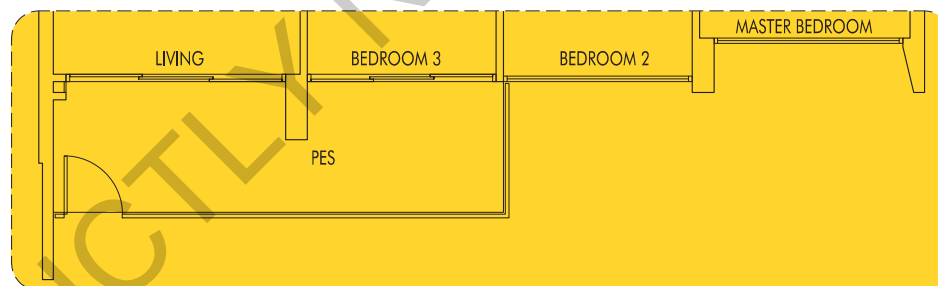
3 Bedroom



TYPE C6

97 sq m | 1044 sq ft

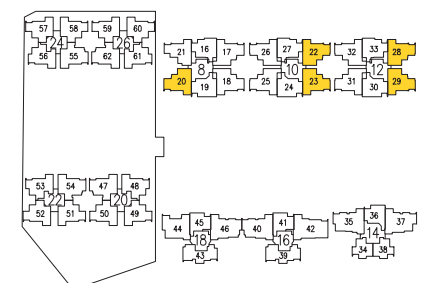
- #02-20 to #22-20 (mirror)
- #02-22 to #24-22 (mirror)
- #02-23 to #23-23
- #02-28 to #23-28 (mirror)
- #02-29 to #23-29



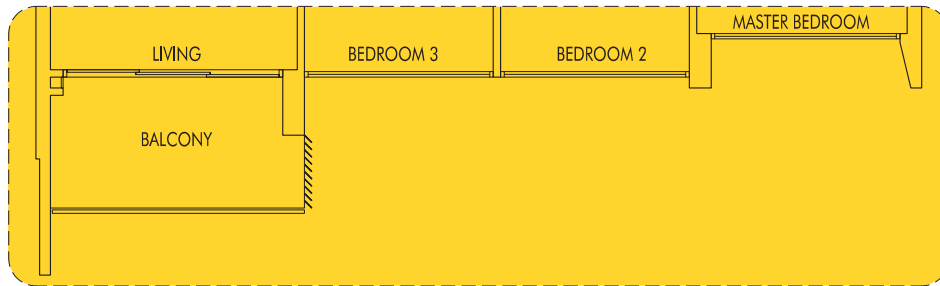
TYPE C6P

102 sq m | 1098 sq ft
(including PES of 11 sq m/118 sq ft)

- #01-20 (mirror)
- #01-22 (mirror)
- #01-23
- #01-28 (mirror)
- #01-29



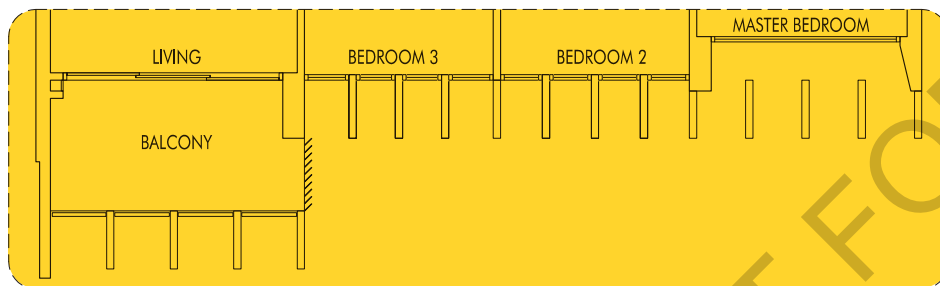
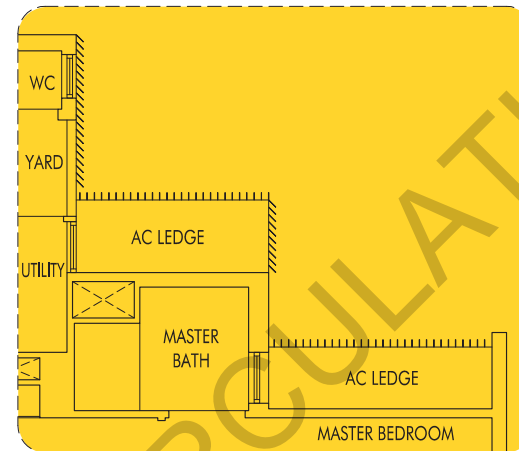
3 Bedroom



TYPE C6a

97 sq m | 1044 sq ft
WITH VERTICAL LOUVERS & FINS
AS PER DSTA REQUIREMENT

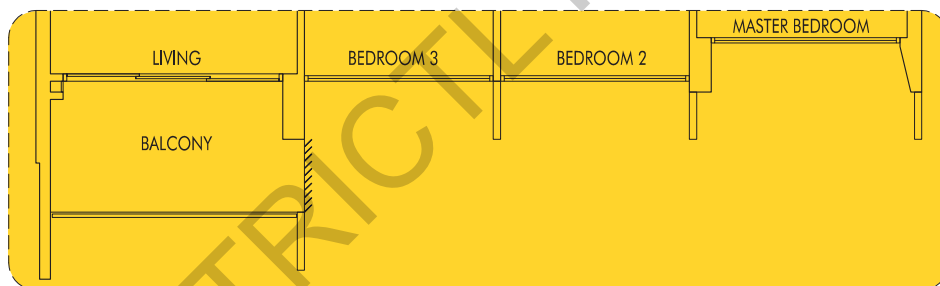
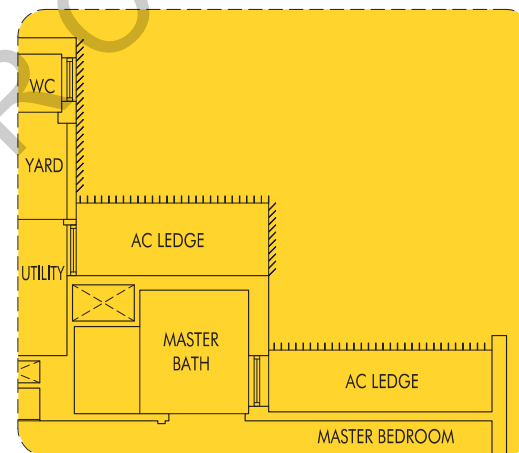
#24-28 (mirror)



TYPE C6b

97 sq m | 1044 sq ft
WITH VERTICAL LOUVERS & FINS
AS PER DSTA REQUIREMENT

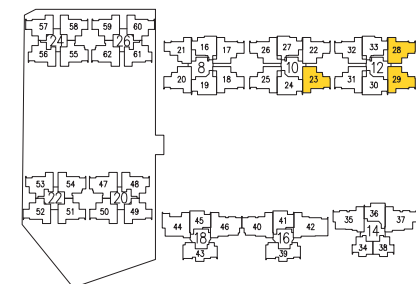
#24-29



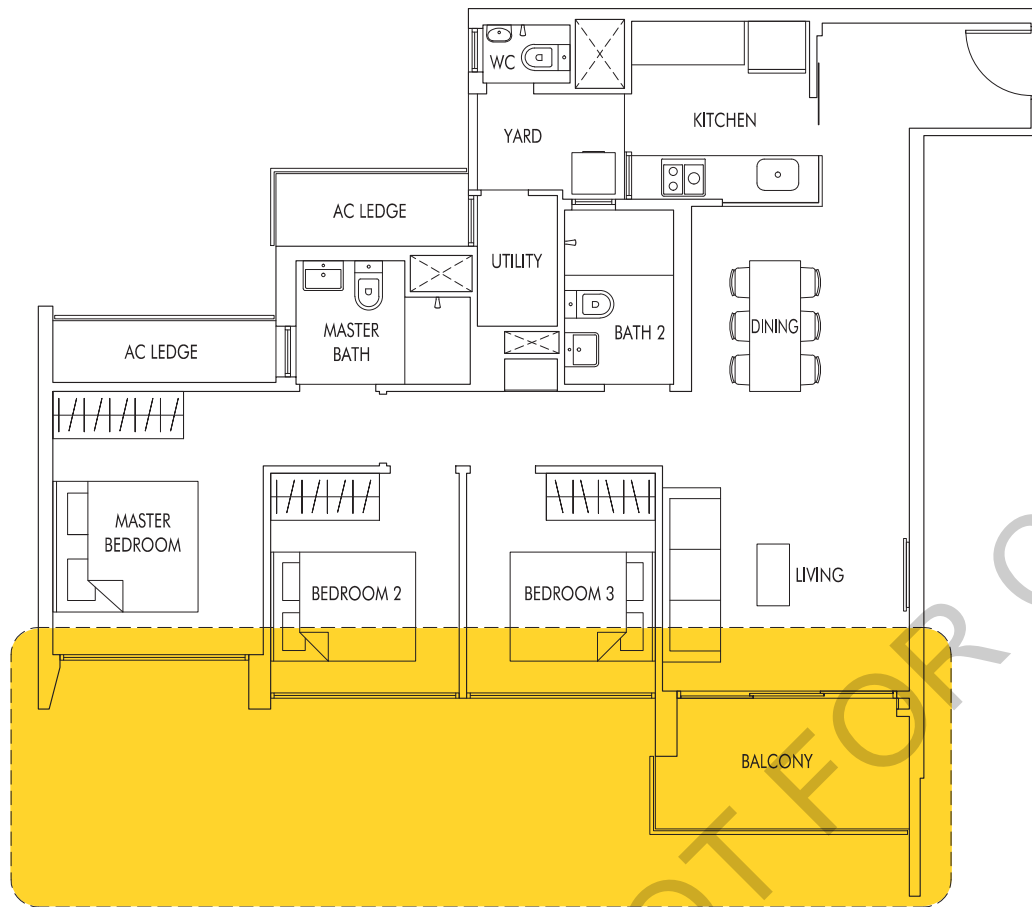
TYPE C6c

97 sq m | 1044 sq ft
WITH VERTICAL LOUVERS & FINS
AS PER DSTA REQUIREMENT

#24-23



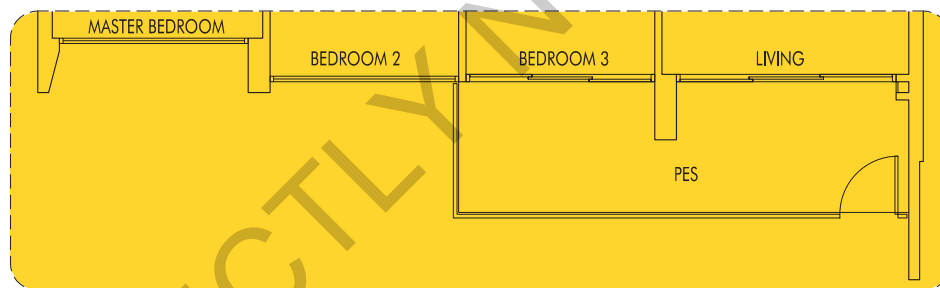
3 Bedroom



TYPE C7

99 sq m | 1066 sq ft

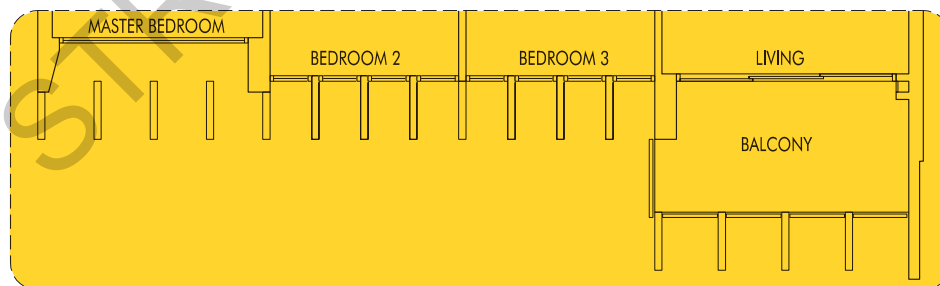
#02-17 to #22-17
 #02-18 to #22-18 (mirror)
 #02-31 to #23-31
 #02-32 to #24-32 (mirror)



TYPE C7P

104 sq m | 1119 sq ft
 (including PES of 11 sq m/118 sq ft)

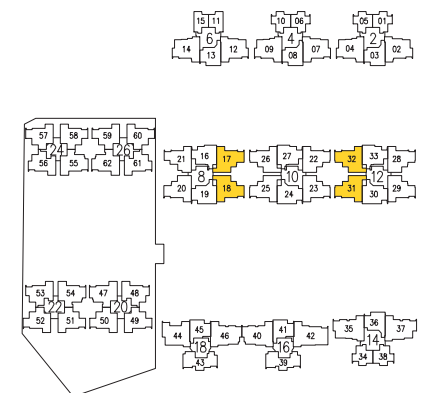
#01-17
 #01-18 (mirror)
 #01-31
 #01-32 (mirror)



TYPE C7a

99 sq m | 1066 sq ft
 WITH VERTICAL FINS
 AS PER DSTA REQUIREMENT

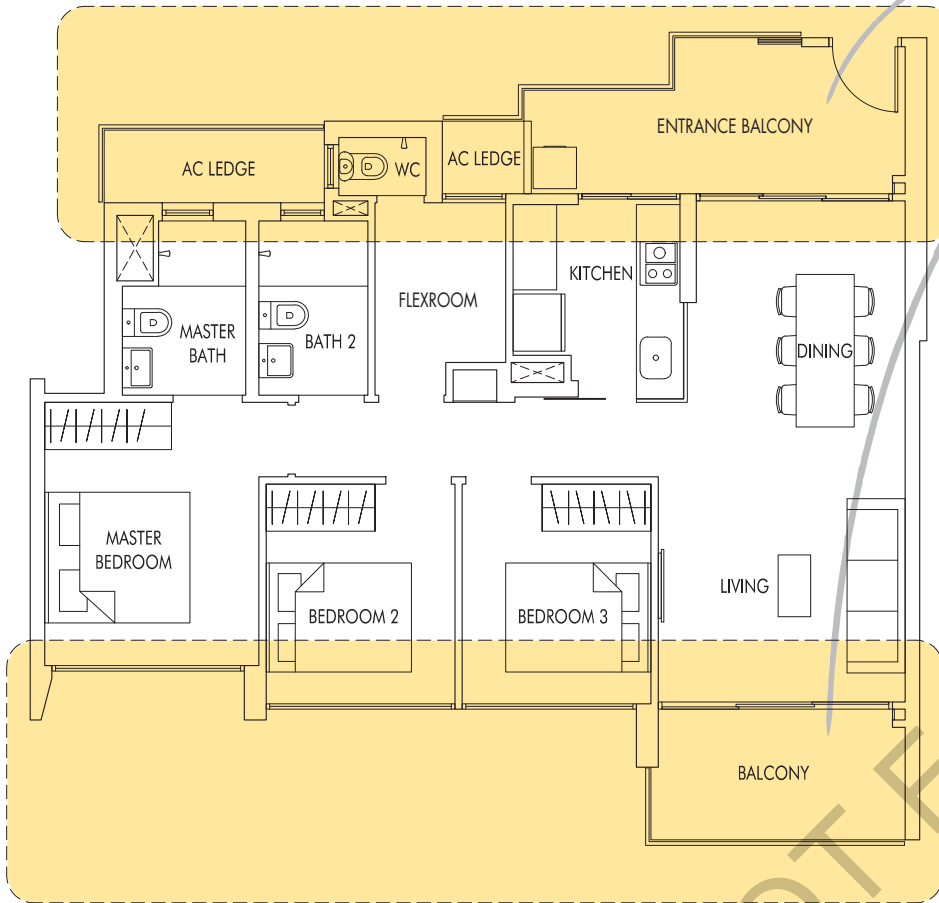
#24-31





+ FlexRoom

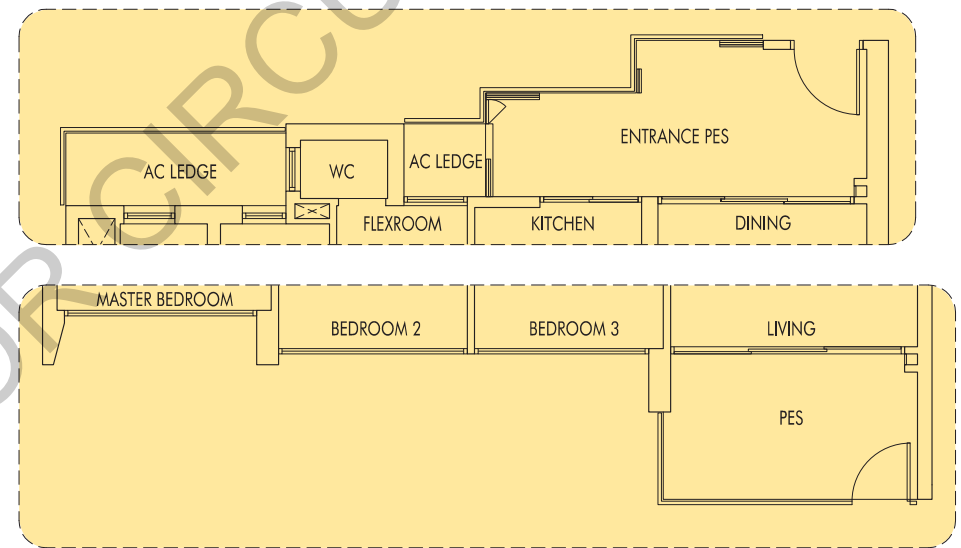
"With this cross-ventilation layout, our family enjoys a breezier and airier home, and of course, savings on electricity bills."



TYPE C8

102 sq m | 1098 sq ft

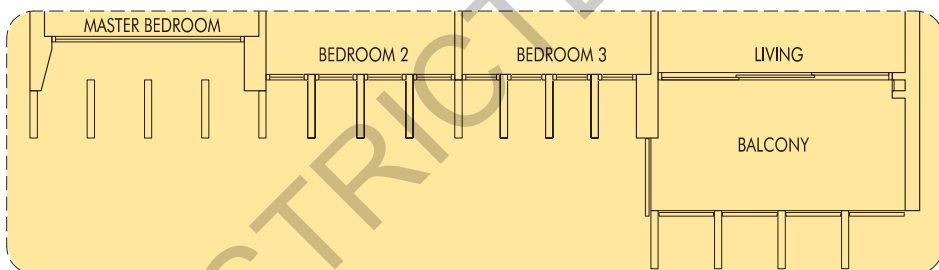
#02-04 to #23-04
#02-09 to #25-09
#02-14 to #25-14



TYPE C8P

102 sq m | 1098 sq ft
(including PES of 17 sq m/183 sq ft)

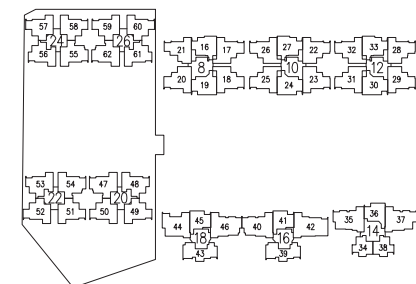
#01-04
#01-09
#01-14



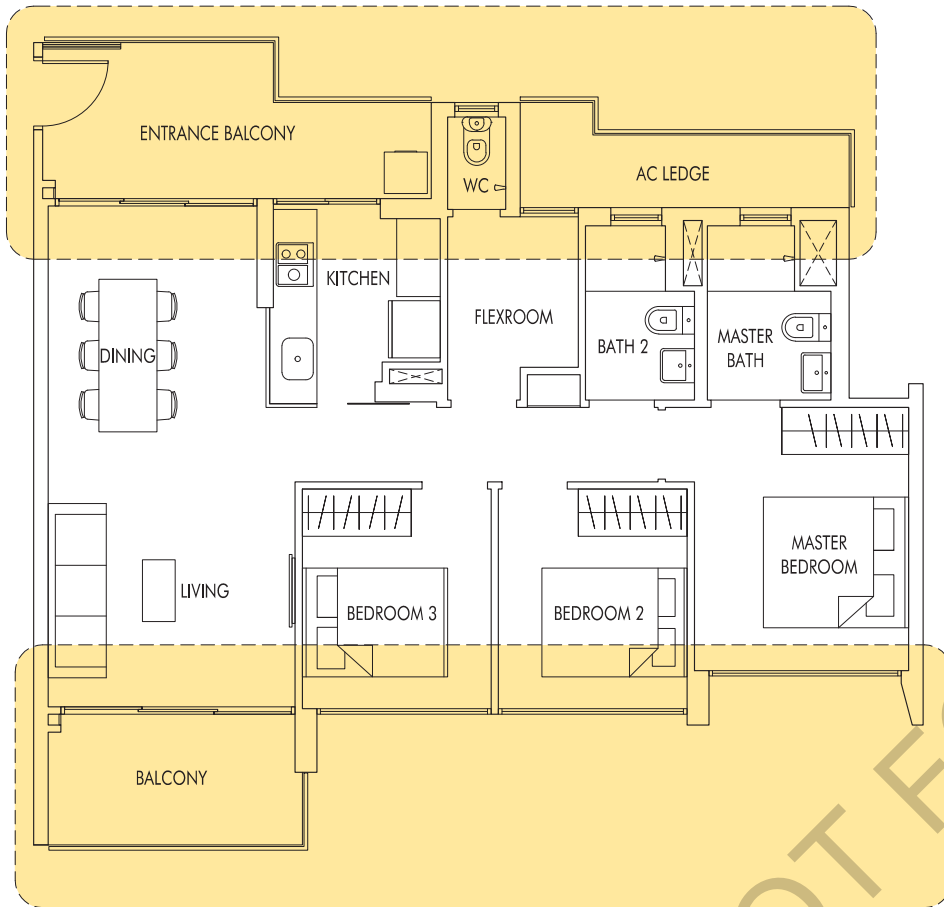
TYPE C8a

102 sq m | 1098 sq ft
WITH VERTICAL FINNS
AS PER DSTA REQUIREMENT

#24-04



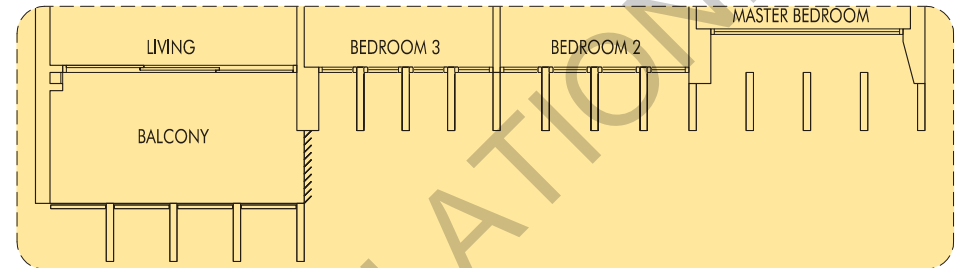
3 + FlexRoom



TYPE C9

102 sq m | 1098 sq ft

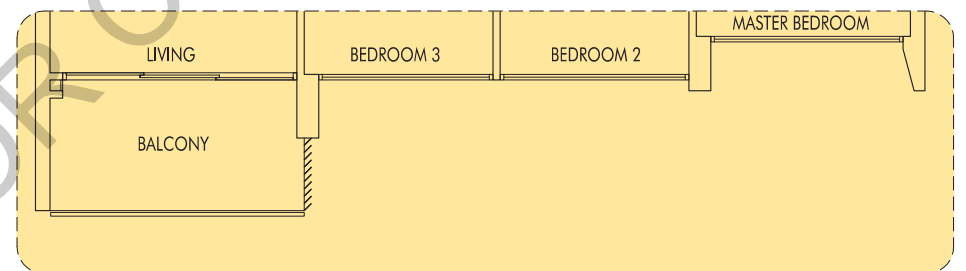
#02-02 to #23-02
#02-07 to #23-07
#02-12 to #23-12



TYPE C9b

102 sq m | 1098 sq ft
WITH VERTICAL LOUVERS & FINS
AS PER DSTA REQUIREMENT

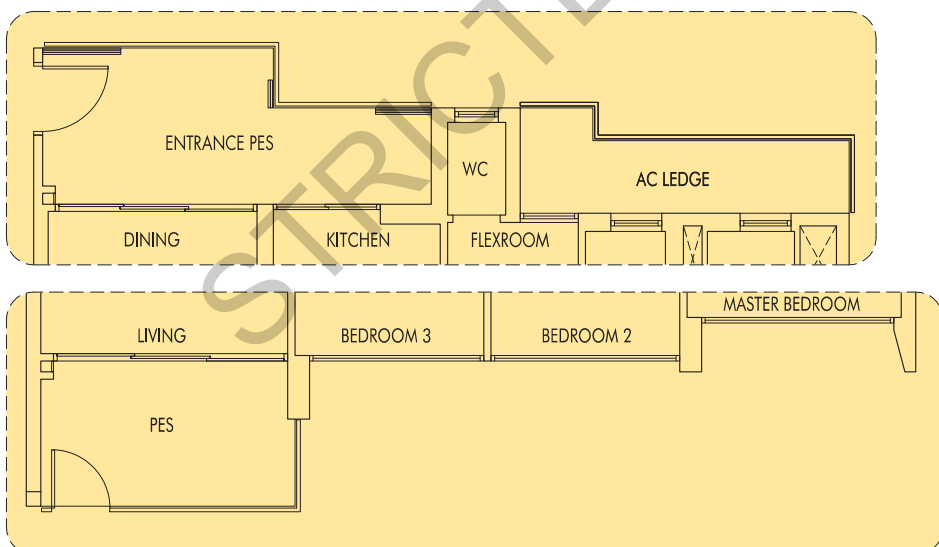
#24-07
#25-07



TYPE C9c

102 sq m | 1098 sq ft
WITH VERTICAL LOUVERS
AS PER DSTA REQUIREMENT

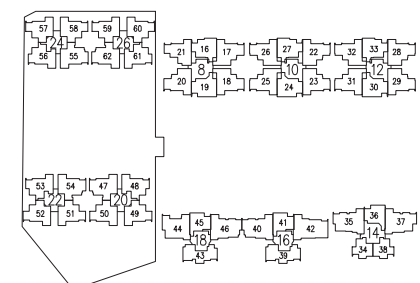
#24-12
#25-12



TYPE C9P

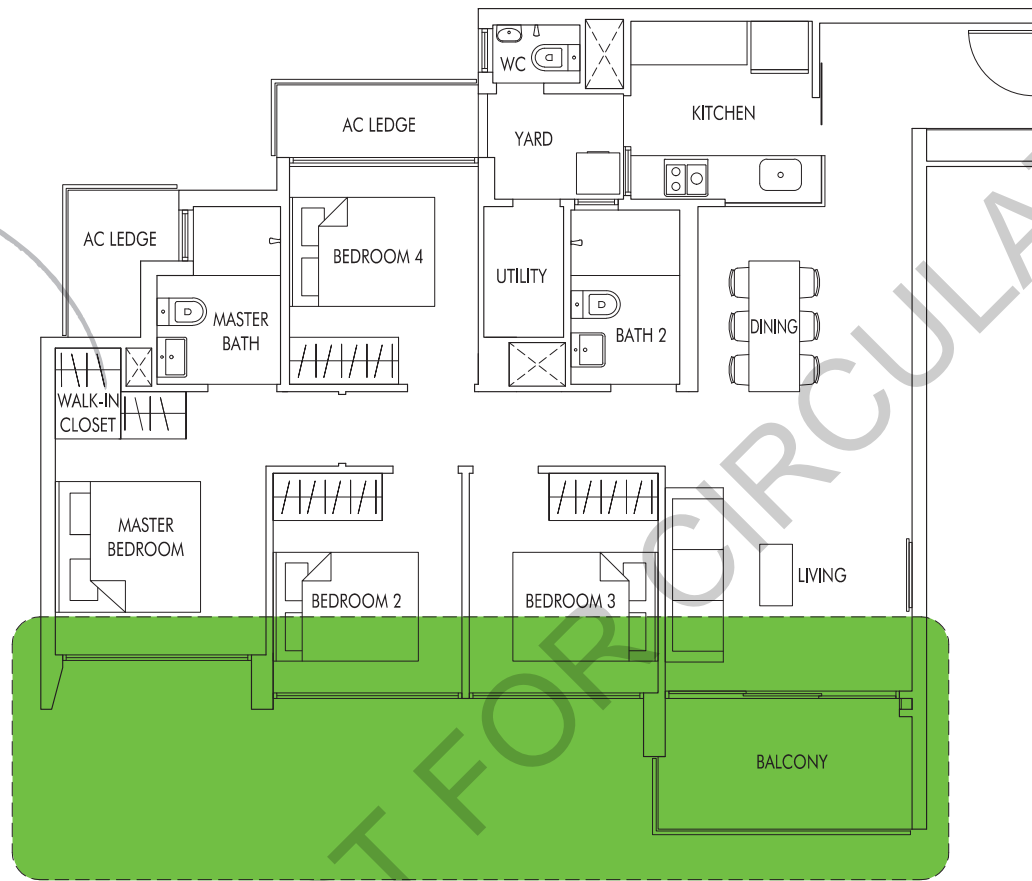
102 sq m | 1098 sq ft
(including PES of 17 sq m/183 sq ft)

#01-02
#01-07
#01-12



4 Bedroom

"Finally, I can have the luxury of having a walk-in wardrobe in my master bedroom."

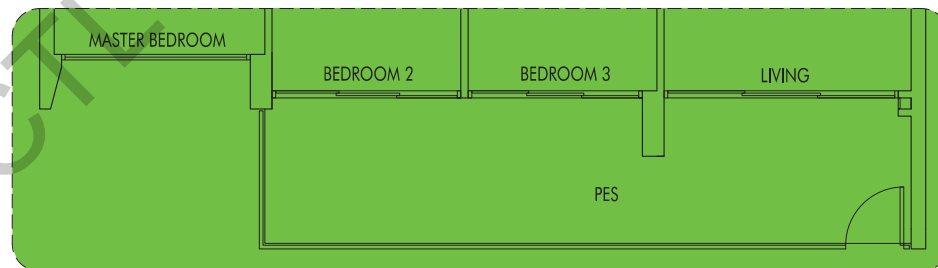


TYPE D1

108 sq m | 1163 sq ft

#02-25 to #24-25

#02-26 to #24-26 (mirror)



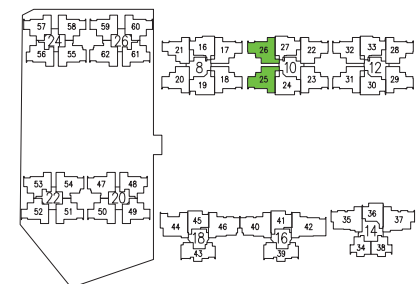
TYPE D1P

120 sq m | 1292 sq ft

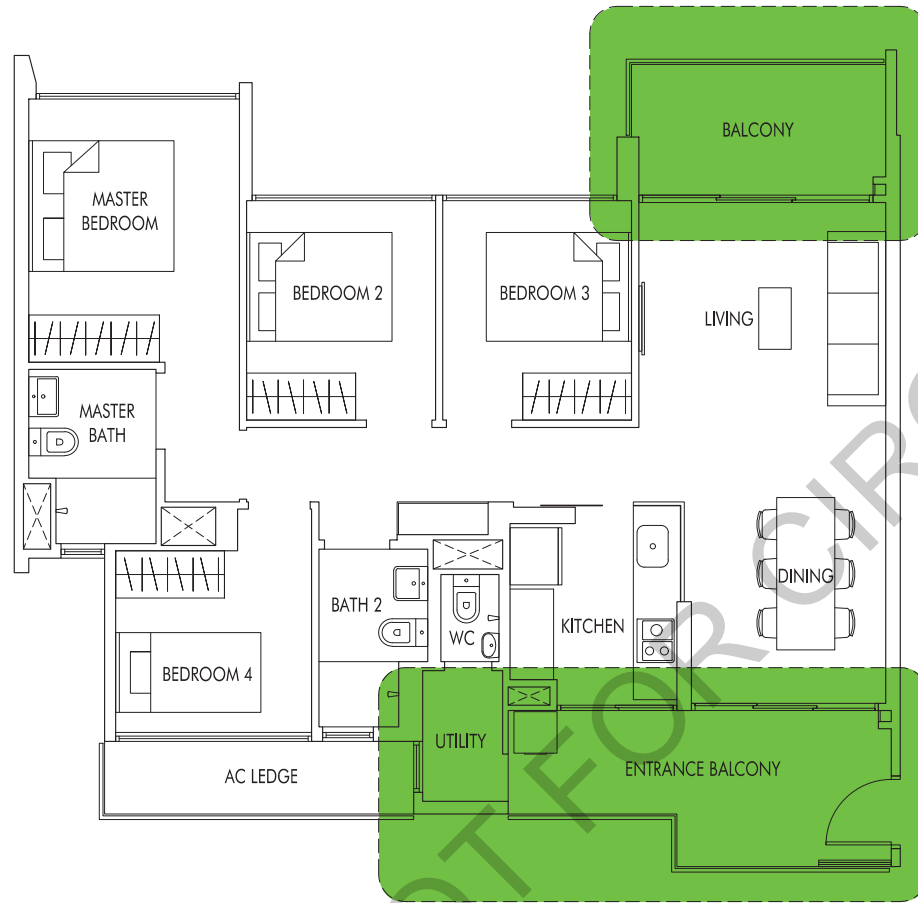
(including PES of 18 sq m/194 sq ft)

#01-25

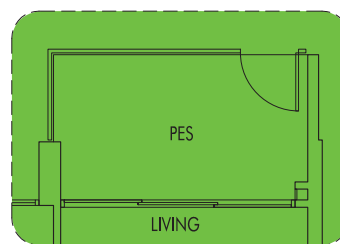
#01-26 (mirror)



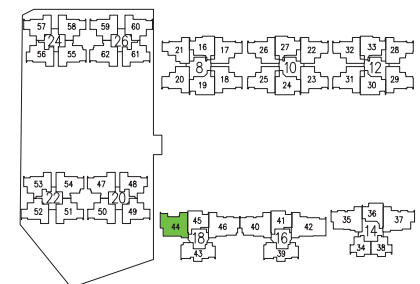
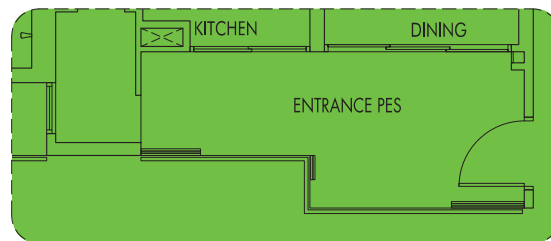
4 Bedroom



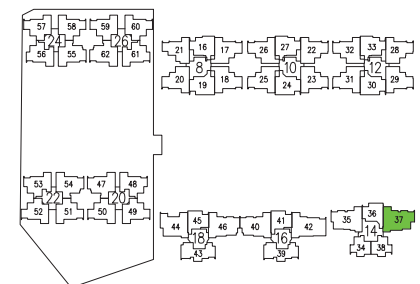
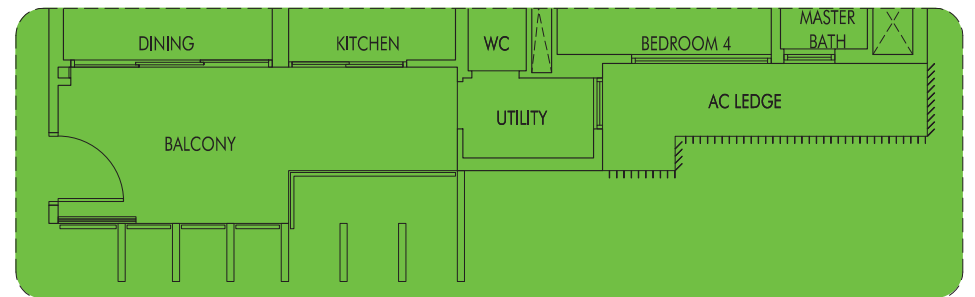
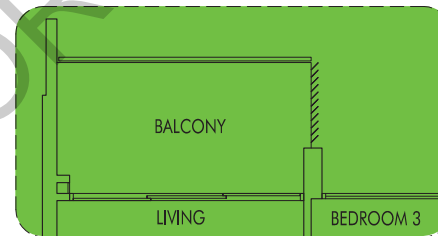
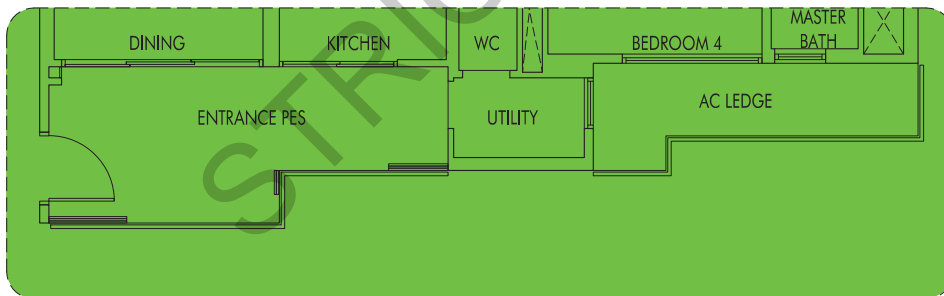
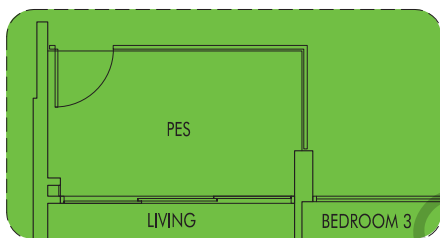
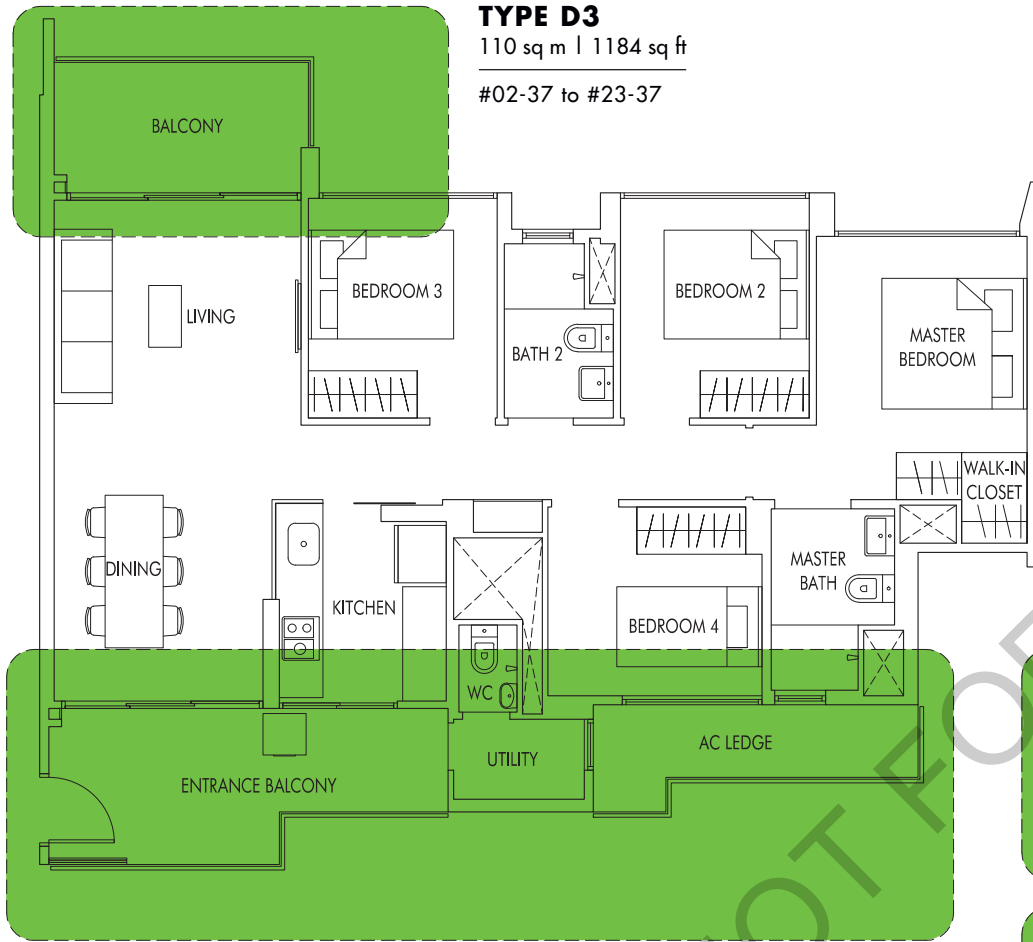
TYPE D2
109 sq m | 1173 sq ft
#02-44 to #21-44



TYPE D2P
110 sq m | 1184 sq ft
(including PES of 18 sq m/194 sq ft)
#01-44



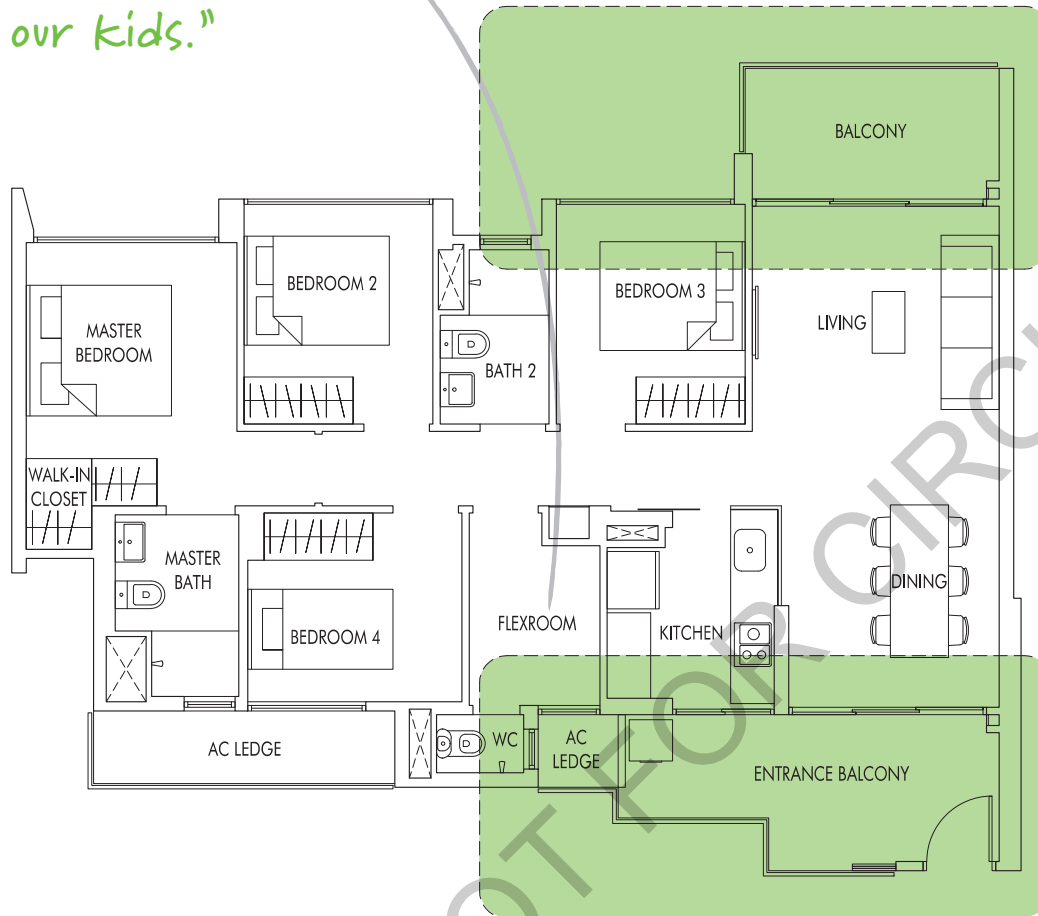
4 Bedroom





+ FlexRoom

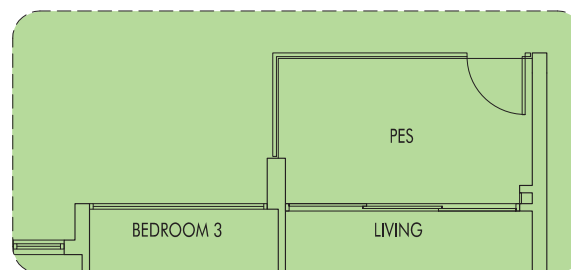
"We can use the FlexRoom as a game room or an extra bedroom for our kids."



TYPE D4

113 sq m | 1216 sq ft

#02-35 to #25-35

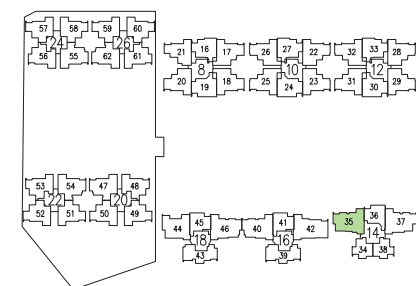
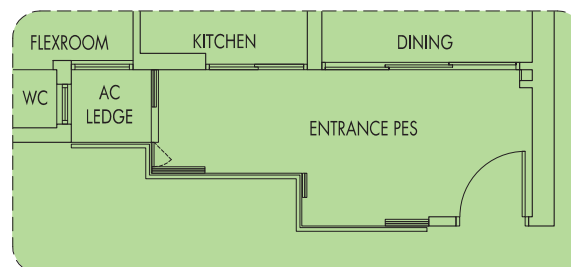


TYPE D4P

114 sq m | 1227 sq ft

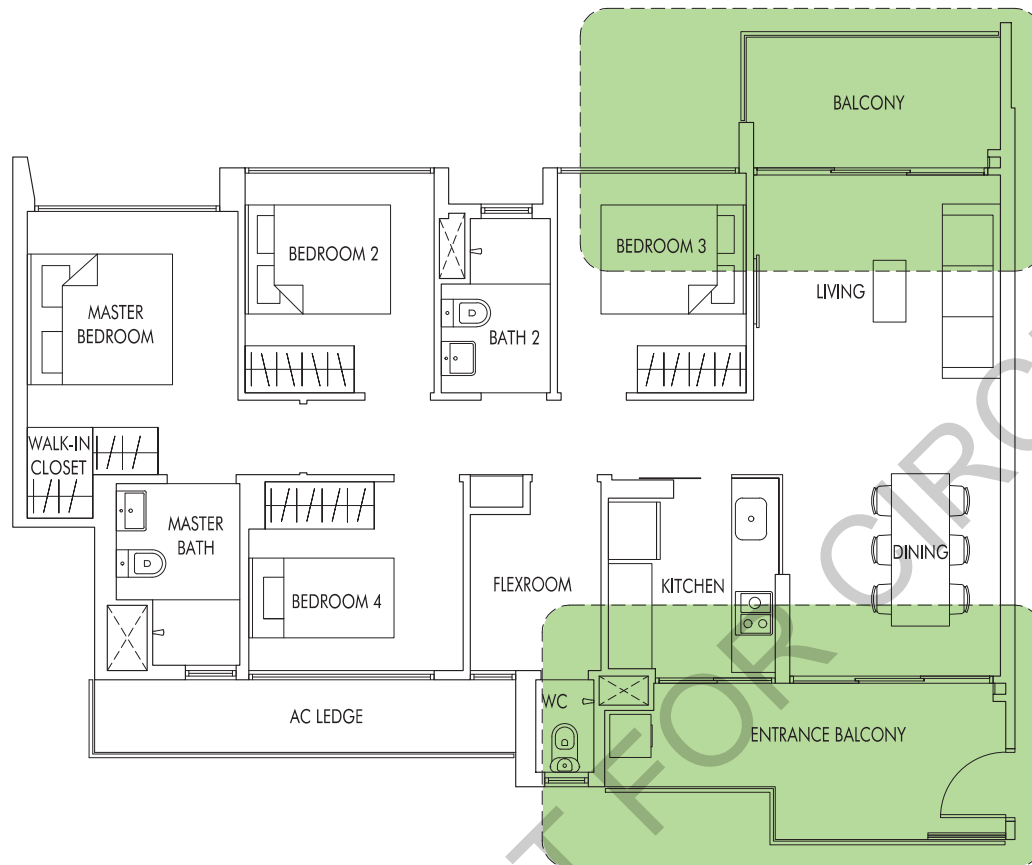
(including PES of 18 sq m/194 sq ft)

#01-35





4 + FlexRoom

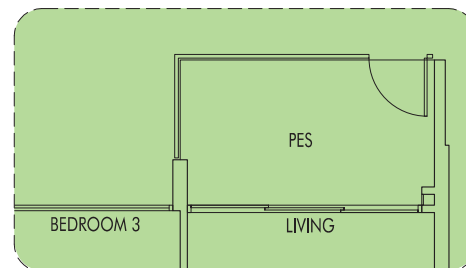


TYPE D5

114 sq m | 1227 sq ft

#02-40 to #21-40

#02-46 to #21-46 (mirror)



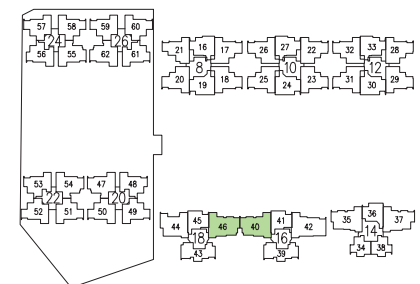
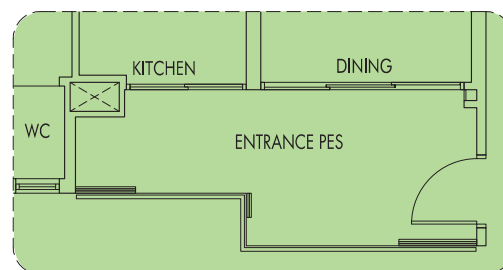
TYPE D5P

115 sq m | 1238 sq ft

(including PES of 18 sq m/194 sq ft)

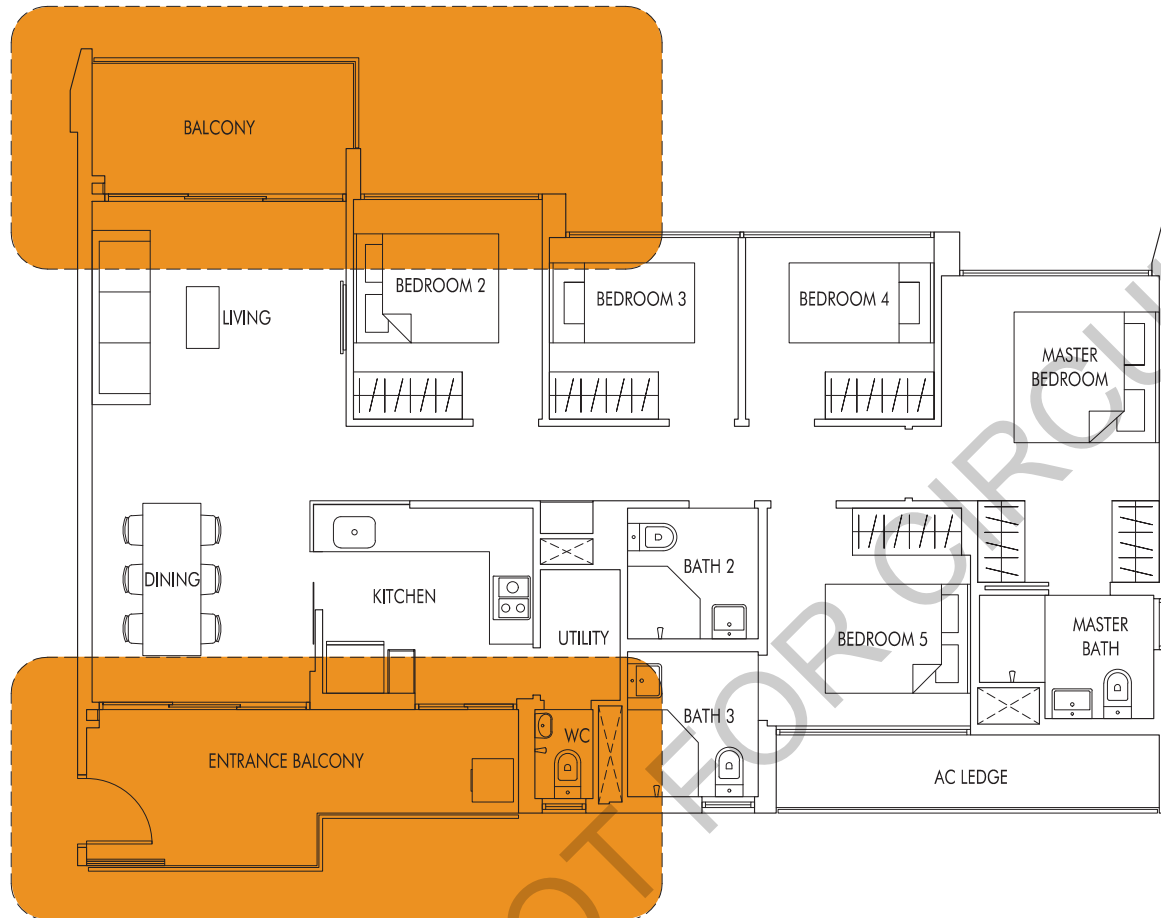
#01-40

#01-46 (mirror)



5 Bedroom

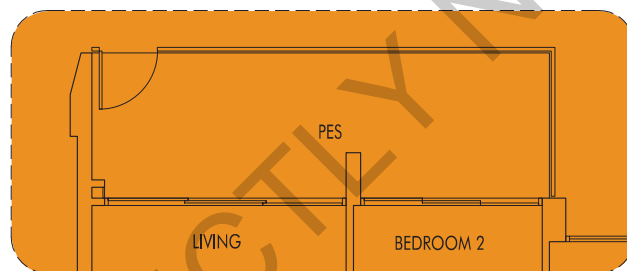
"Living in a 5-Bedroom EC unit is a rarity. Now everyone, including Gramps, can have their own room!"



TYPE E1

128 sq m | 1378 sq ft

#02-42 to #21-42



TYPE E1P

134 sq m | 1442 sq ft

(including PES of 24 sq m/258 sq ft)

#01-42

