

2 - Bedroom

Type A1

72 sq m / 775 sq ft

#02-04 to #11-04, #12-04 (High Ceiling)

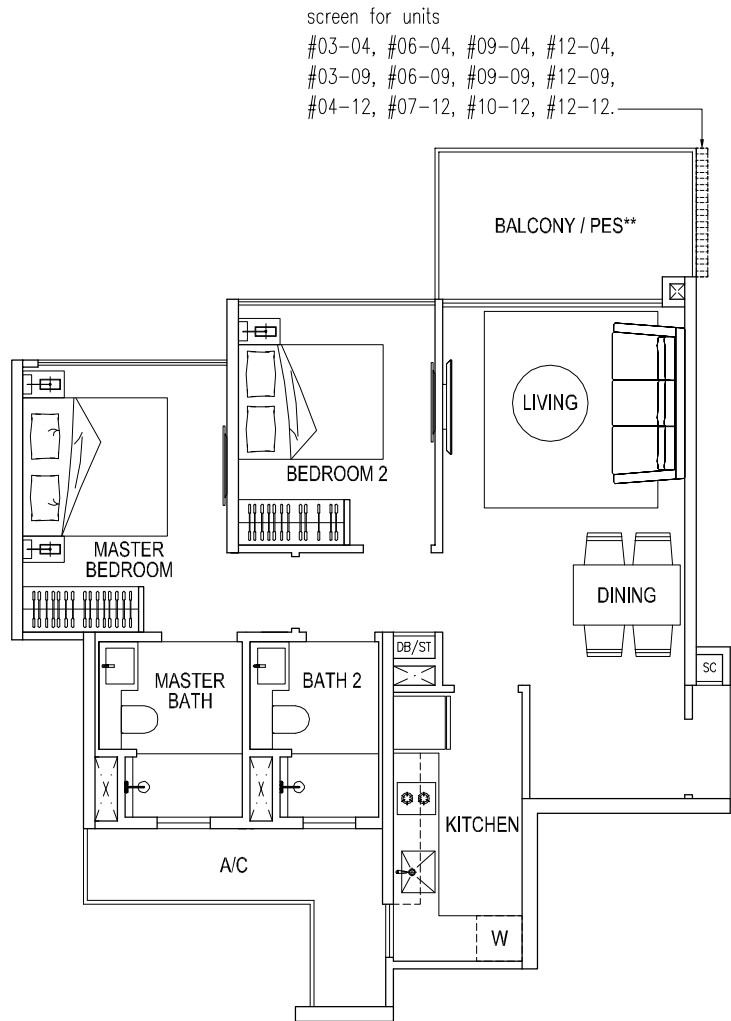
#02-09 to #11-09, #12-09 (High Ceiling)

#02-12 to #11-12, #12-12 (High Ceiling) *

Type A1a

72 sq m / 775 sq ft

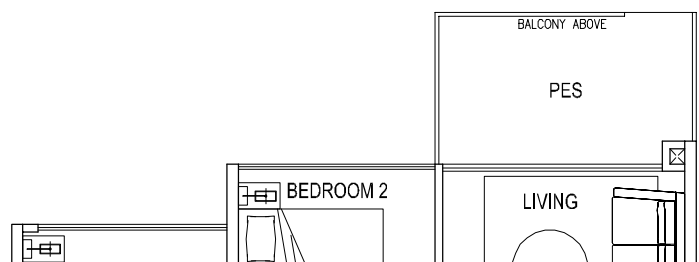
#01-04



Type A1a (Partial plan)

72 sq m / 775 sq ft

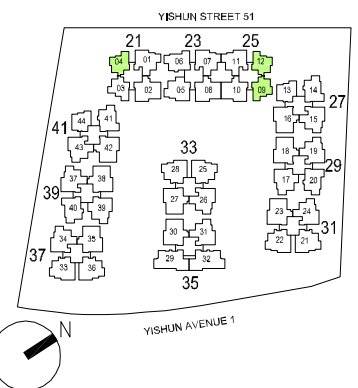
#01-09



* mirror - image

**1st storey units PES
 in lieu of Balcony

Area includes A/C ledge, balcony and PES where applicable. Orientations and facings will differ depending on the unit you are purchasing. Please refer to the key plan. The plans are subjected to change as may be required or approved by relevant authorities. All areas are approximate and subject to final survey. The developer and its agents cannot be held liable for any inaccuracies.

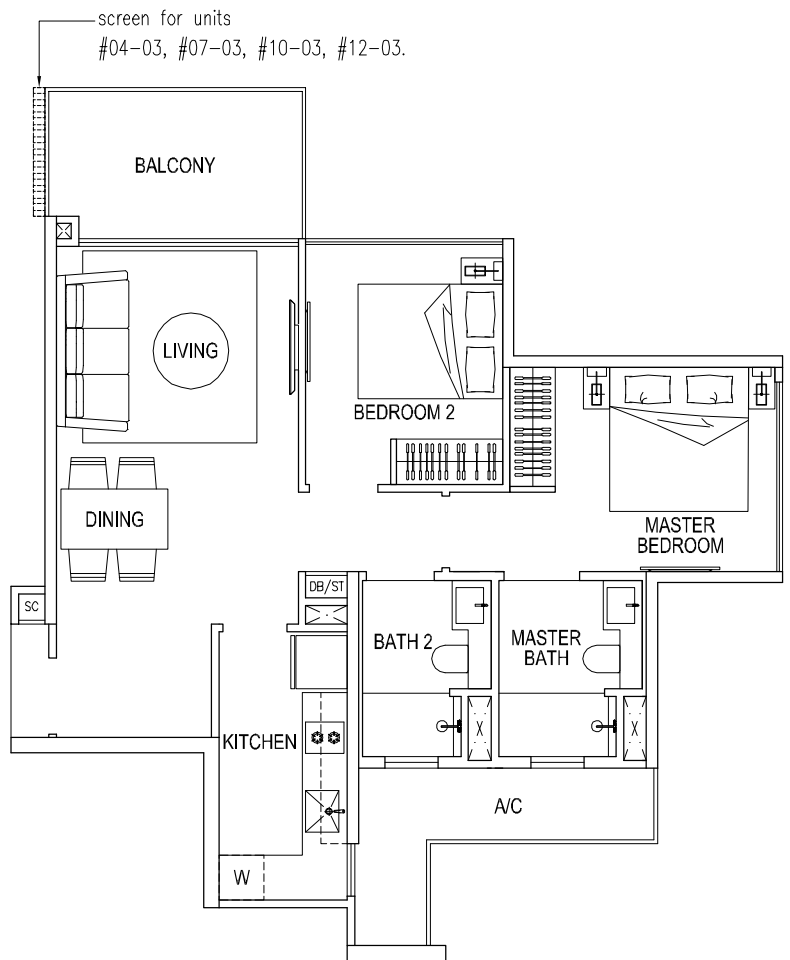


2 - Bedroom

Type A2

72 sq m / 775 sq ft

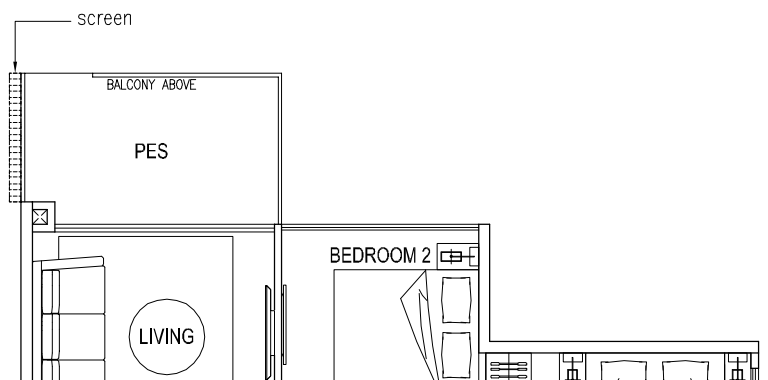
#02-03 to #11-03, #12-03 (High Ceiling)



Type A2a (Partial plan)

72 sq m / 775 sq ft

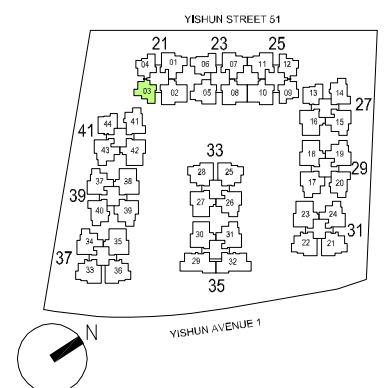
#01-03



* mirror – image

**1st storey units PES
in lieu of Balcony

Area includes A/C ledge, balcony and PES where applicable. Orientations and facings will differ depending on the unit you are purchasing. Please refer to the key plan. The plans are subjected to change as may be required or approved by relevant authorities. All areas are approximate and subject to final survey. The developer and its agents cannot be held liable for any inaccuracies.



2 - Bedroom

Type A3

71 sq m / 764 sq ft

#02-13 to #11-13, #12-13 (High Ceiling)

#02-44 to #11-44, #12-44 (High Ceiling)

Type A3a

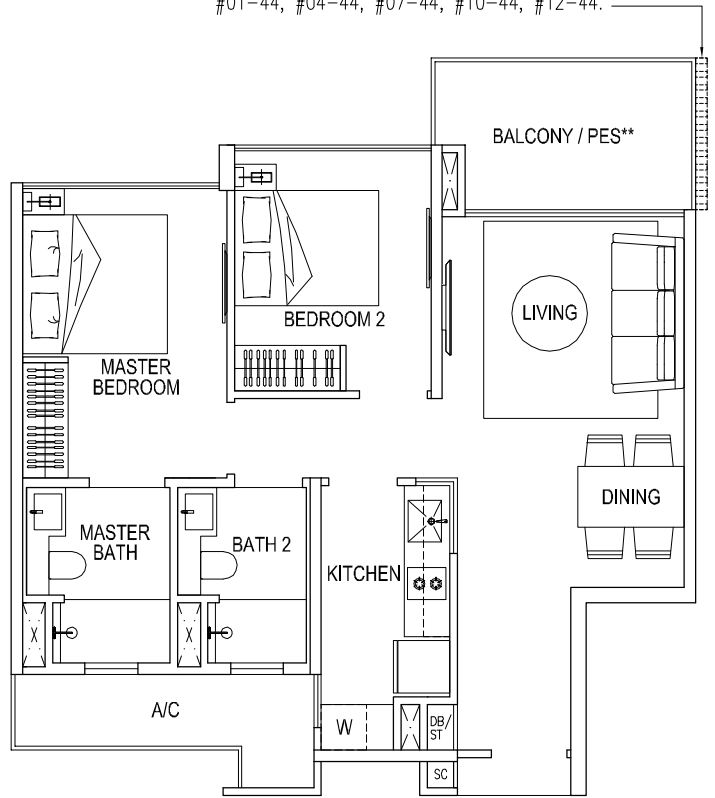
71 sq m / 764 sq ft

#01-44

screen for units

#04-13, #07-13, #10-13, #12-13,

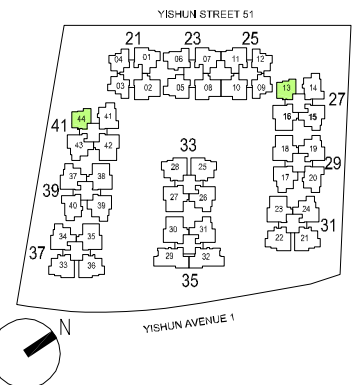
#01-44, #04-44, #07-44, #10-44, #12-44.



* mirror – image

**1st storey units PES
in lieu of Balcony

Area includes A/C ledge, balcony and PES where applicable. Orientations and facings will differ depending on the unit you are purchasing. Please refer to the key plan. The plans are subjected to change as may be required or approved by relevant authorities. All areas are approximate and subject to final survey. The developer and its agents cannot be held liable for any inaccuracies.



3 - Bedroom

Type B1

88 sq m / 947 sq ft

#02-06 to #11-06, #12-06 (High Ceiling)

#02-14 to #11-14, #12-14 (High Ceiling)

#02-20 to #11-20, #12-20 (High Ceiling) *

#02-40 to #11-40, #12-40 (High Ceiling)

#02-41 to #11-41, #12-41 (High Ceiling)

Type B1a

88 sq m / 947 sq ft

#01-06

#01-14

#01-20 *

#01-40

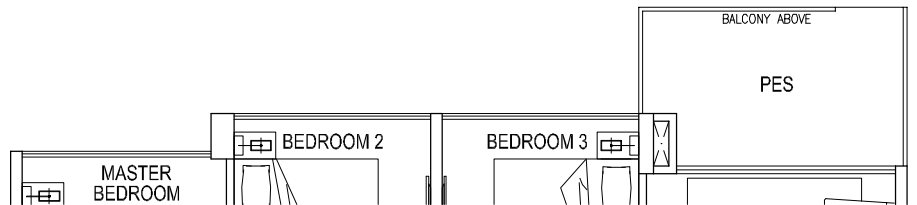
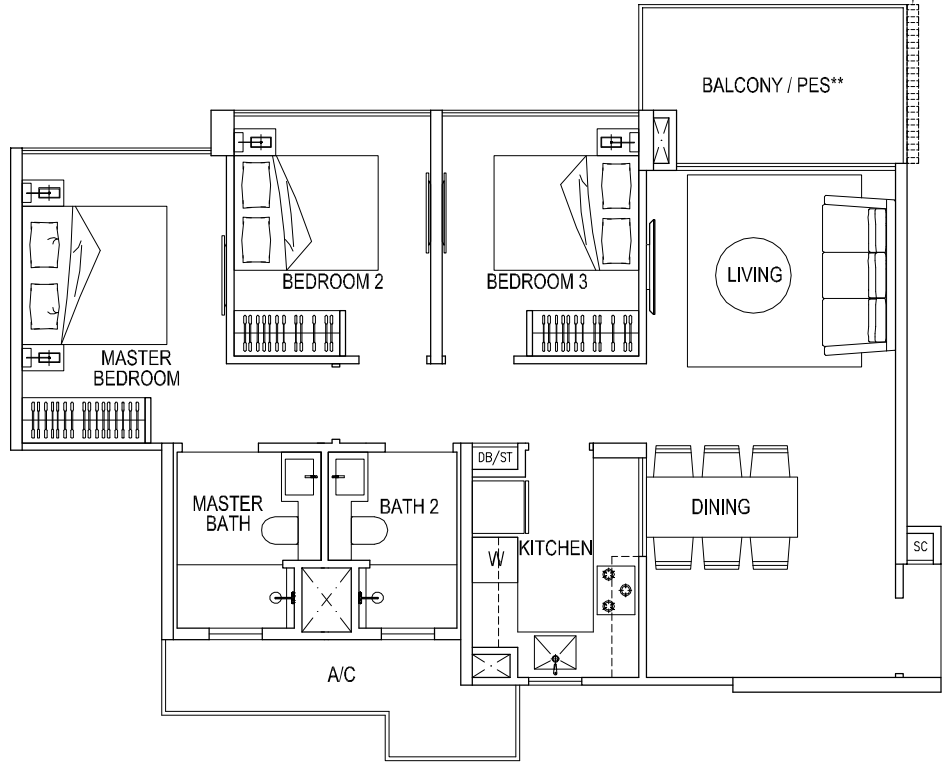
Type B1a (Partial plan)

88 sq m / 947 sq ft

#01-41

screen for units

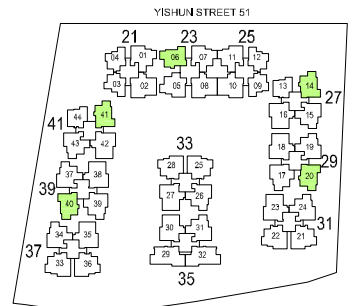
#03-06, #06-06, #09-06, #12-06,
 #03-14, #06-14, #09-14, #12-14,
 #01-20, #04-20, #07-20, #10-20, #12-20,
 #03-40, #06-40, #09-40, #12-40,
 #03-41, #06-41, #09-41, #12-41.



* mirror - image

**1st storey units PES
 in lieu of Balcony

Area includes A/C ledge, balcony and PES where applicable. Orientations and facings will differ depending on the unit you are purchasing. Please refer to the key plan. The plans are subjected to change as may be required or approved by relevant authorities. All areas are approximate and subject to final survey. The developer and its agents cannot be held liable for any inaccuracies.



3 - Bedroom Premium

Type C1

102 sq m / 1098 sq ft

#02-01 to #11-01, #12-01 (High Ceiling)

#02-07 to #11-07, #12-07 (High Ceiling)

#02-11 to #11-11, #12-11 (High Ceiling) *

#02-15 to #11-15, #12-15 (High Ceiling)

#02-19 to #11-19, #12-19 (High Ceiling) *

#02-24 to #11-24, #12-24 (High Ceiling) *

#02-26 to #11-26, #12-26 (High Ceiling)

#02-31 to #11-31, #12-31 (High Ceiling) *

#02-34 to #11-34, #12-34 (High Ceiling)

#02-37 to #11-37, #12-37 (High Ceiling)

#02-43 to #11-43, #12-43 (High Ceiling) *

Type C1a

102 sq m / 1098 sq ft

#01-01, #01-07

#01-15, #01-19 *

#01-24 *, #01-34

#01-37, #01-43 *

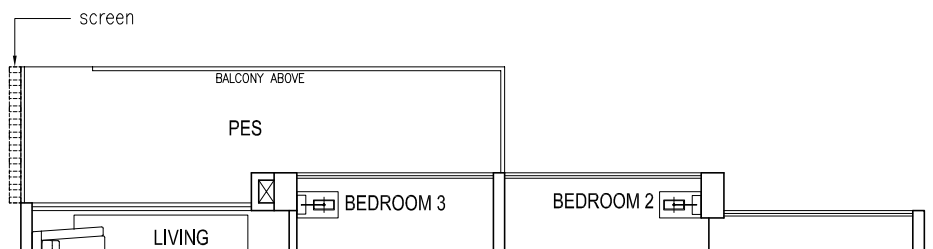
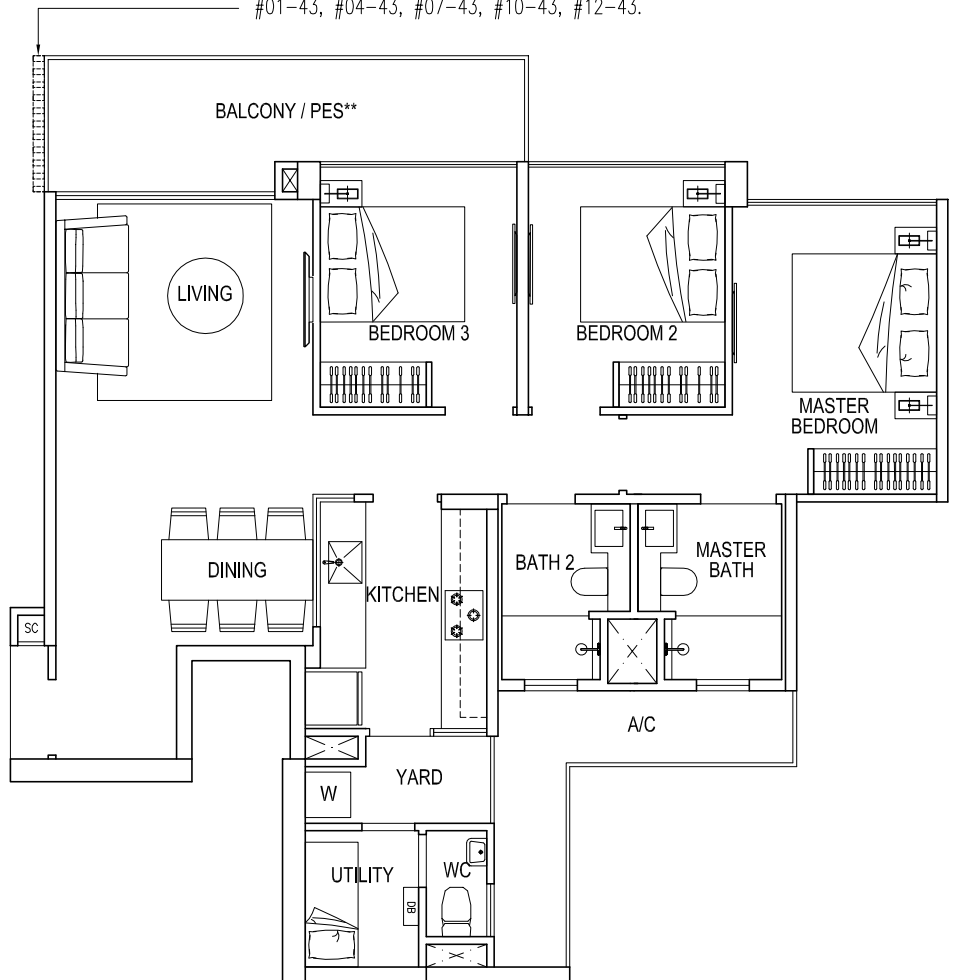
Type C1a (Partial plan)

102 sq m / 1098 sq ft

#01-26, #01-31 *

screen for units

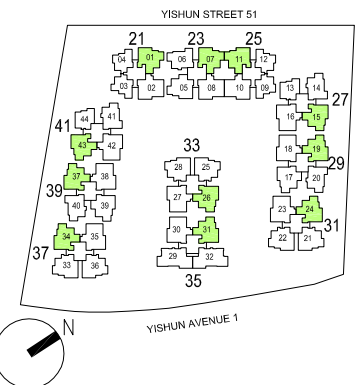
#01-01, #04-01, #07-01, #10-01, #12-01,
 #01-07, #04-07, #07-07, #10-07, #12-07,
 #03-11, #06-11, #09-11, #12-11,
 #01-15, #04-15, #07-15, #10-15, #12-15,
 #03-19, #06-19, #09-19, #12-19,
 #01-24, #04-24, #07-24, #10-24, #12-24,
 #04-26, #07-26, #10-26, #12-26,
 #04-31, #07-31, #10-31, #12-31,
 #01-34, #04-34, #07-34, #10-34, #12-34,
 #01-37, #04-37, #07-37, #10-37, #12-37,
 #01-43, #04-43, #07-43, #10-43, #12-43.



* mirror - image

**1st storey units PES
 in lieu of Balcony

Area includes A/C ledge, balcony and PES where applicable. Orientations and facings will differ depending on the unit you are purchasing. Please refer to the key plan. The plans are subjected to change as may be required or approved by relevant authorities. All areas are approximate and subject to final survey. The developer and its agents cannot be held liable for any inaccuracies.



3 - Bedroom Premium

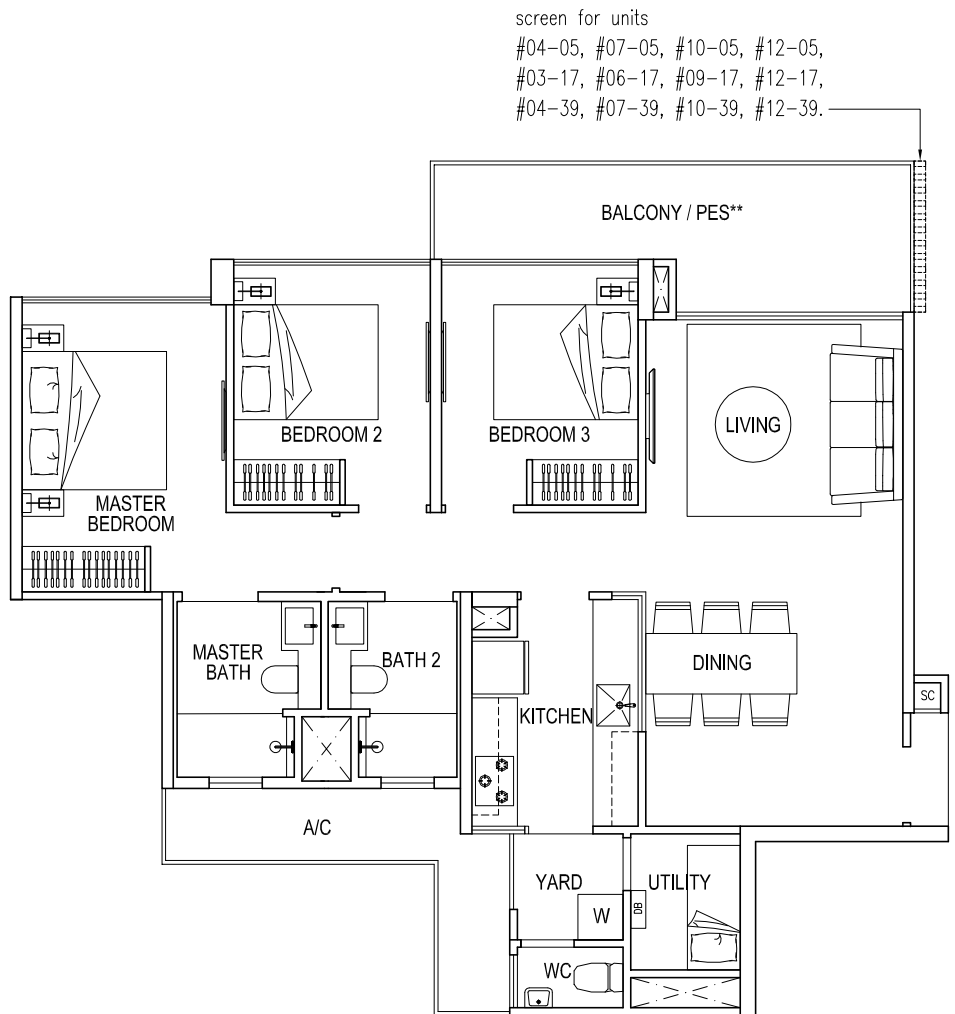
Type C2

100 sq m / 1076 sq ft

#02-05 to #11-05, #12-05 (High Ceiling) *

#02-17 to #11-17, #12-17 (High Ceiling)

#02-39 to #11-39, #12-39 (High Ceiling) *



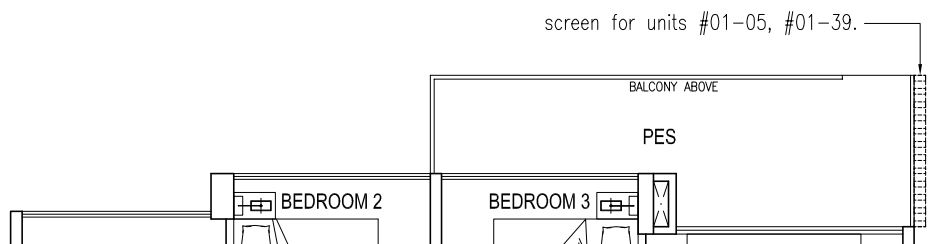
Type C2a (Partial plan)

100 sq m / 1076 sq ft

#01-05 *

#01-17

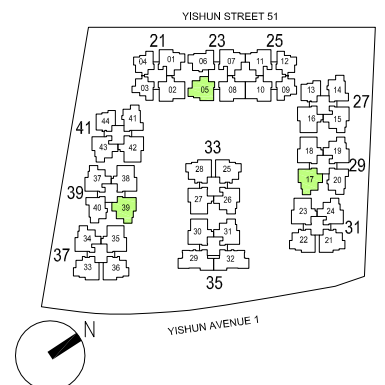
#01-39 *



* mirror - image

**1st storey units PES
in lieu of Balcony

Area includes A/C ledge, balcony and PES where applicable. Orientations and facings will differ depending on the unit you are purchasing. Please refer to the key plan. The plans are subjected to change as may be required or approved by relevant authorities. All areas are approximate and subject to final survey. The developer and its agents cannot be held liable for any inaccuracies.



3 - Bedroom Premium

Type C3

102 sq m / 1098 sq ft

#02-21 to #11-21, #12-21 (High Ceiling)

#02-22 to #11-22, #12-22 (High Ceiling) *

#02-25 to #11-25, #12-25 (High Ceiling) *

#02-28 to #11-28, #12-28 (High Ceiling)

#02-33 to #11-33, #12-33 (High Ceiling) *

#02-36 to #11-36, #12-36 (High Ceiling)

screen for units

#03-21, #06-21, #09-21, #12-21,

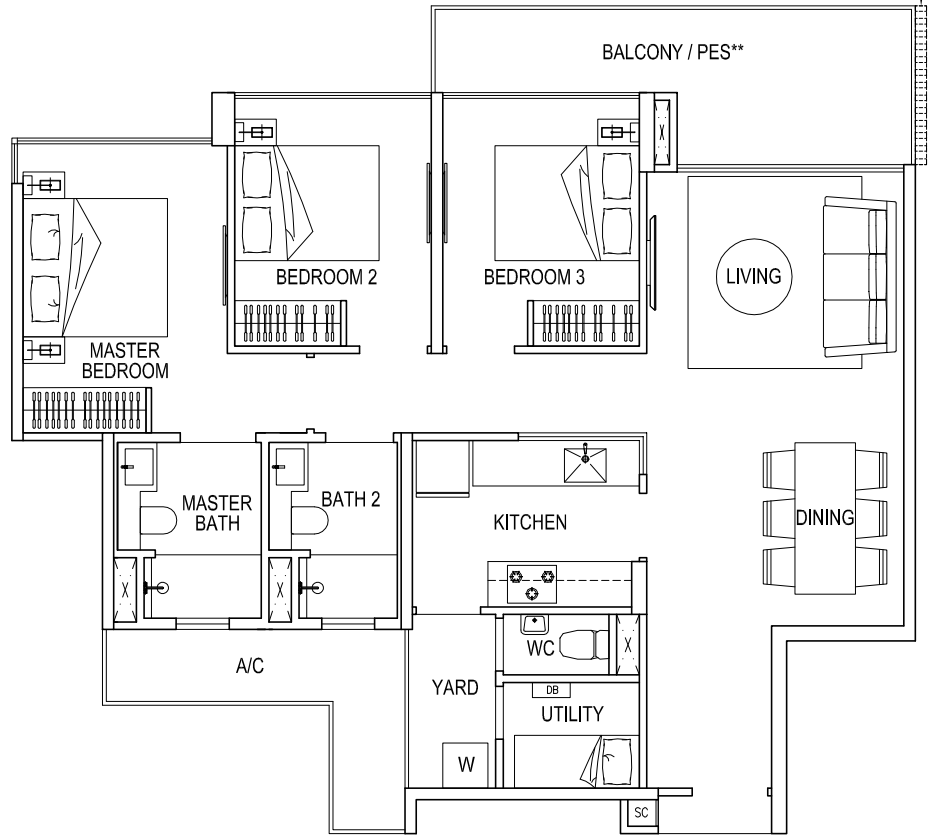
#01-22, #04-22, #07-22, #10-22, #12-22,

#03-25, #06-25, #09-25, #12-25,

#04-28, #07-28, #10-28, #12-28,

#01-33, #04-33, #07-33, #10-33, #12-33,

#03-36, #06-36, #09-36, #12-36.



Type C3a

102 sq m / 1098 sq ft

#01-21, #01-22 *

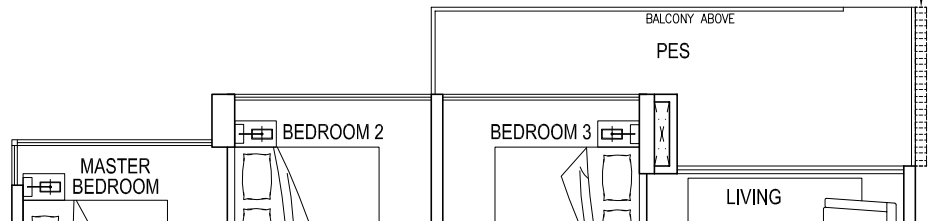
#01-33 *, #01-36

screen for unit #01-28.

Type C3a (Partial plan)

102 sq m / 1098 sq ft

#01-25 *, #01-28

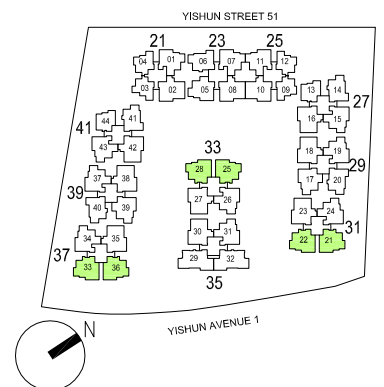


0 5 METERS

* mirror - image

**1st storey units PES
in lieu of Balcony

Area includes A/C ledge, balcony and PES where applicable. Orientations and facings will differ depending on the unit you are purchasing. Please refer to the key plan. The plans are subjected to change as may be required or approved by relevant authorities. All areas are approximate and subject to final survey. The developer and its agents cannot be held liable for any inaccuracies.



4 - Bedroom

Type D1

110 sq m / 1184 sq ft

#02-02 to #11-02, #12-02 (High Ceiling)

#02-08 to #11-08, #12-08 (High Ceiling)

#02-10 to #11-10, #12-10 (High Ceiling) *

#02-16 to #11-16, #12-16 (High Ceiling)

#02-18 to #11-18, #12-18 (High Ceiling) *

#02-23 to #11-23, #12-23 (High Ceiling) *

#02-27 to #11-27, #12-27 (High Ceiling)

#02-30 to #11-30, #12-30 (High Ceiling) *

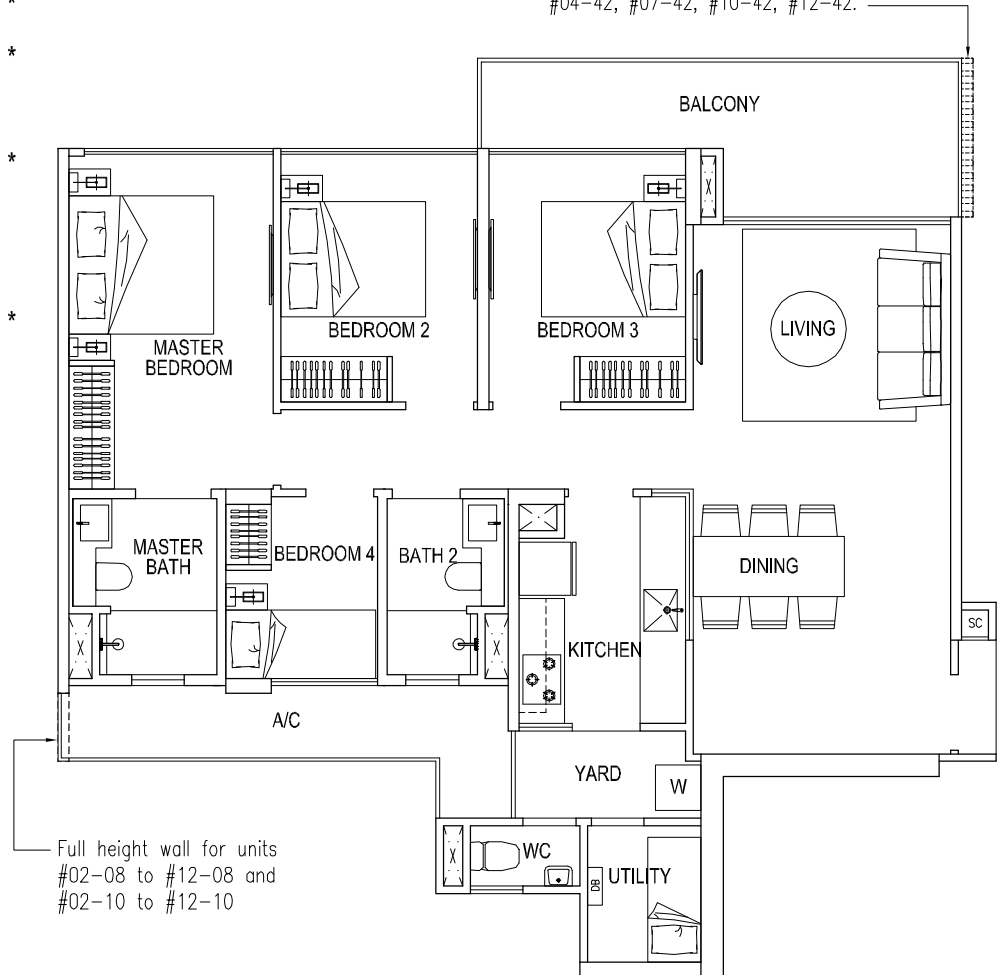
#02-35 to #11-35, #12-35 (High Ceiling)

#02-38 to #11-38, #12-38 (High Ceiling)

#02-42 to #11-42, #12-42 (High Ceiling) *

screen for units

#03-02, #06-02, #09-02, #12-02,
 #03-08, #06-08, #09-08, #12-08,
 #04-10, #07-10, #10-10, #12-10,
 #04-16, #07-16, #10-16, #12-16,
 #04-18, #07-18, #10-18, #12-18,
 #04-23, #07-23, #10-23, #12-23,
 #04-27, #07-27, #10-27, #12-27,
 #04-30, #07-30, #10-30, #12-30,
 #04-35, #07-35, #10-35, #12-35,
 #03-38, #06-38, #09-38, #12-38,
 #04-42, #07-42, #10-42, #12-42.

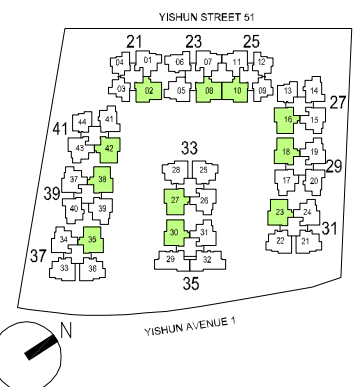


Full height wall for units
 #02-08 to #12-08 and
 #02-10 to #12-10



* mirror - image

Area includes A/C ledge, balcony and PES where applicable. Orientations and facings will differ depending on the unit you are purchasing. Please refer to the key plan. The plans are subjected to change as may be required or approved by relevant authorities. All areas are approximate and subject to final survey. The developer and its agents cannot be held liable for any inaccuracies.



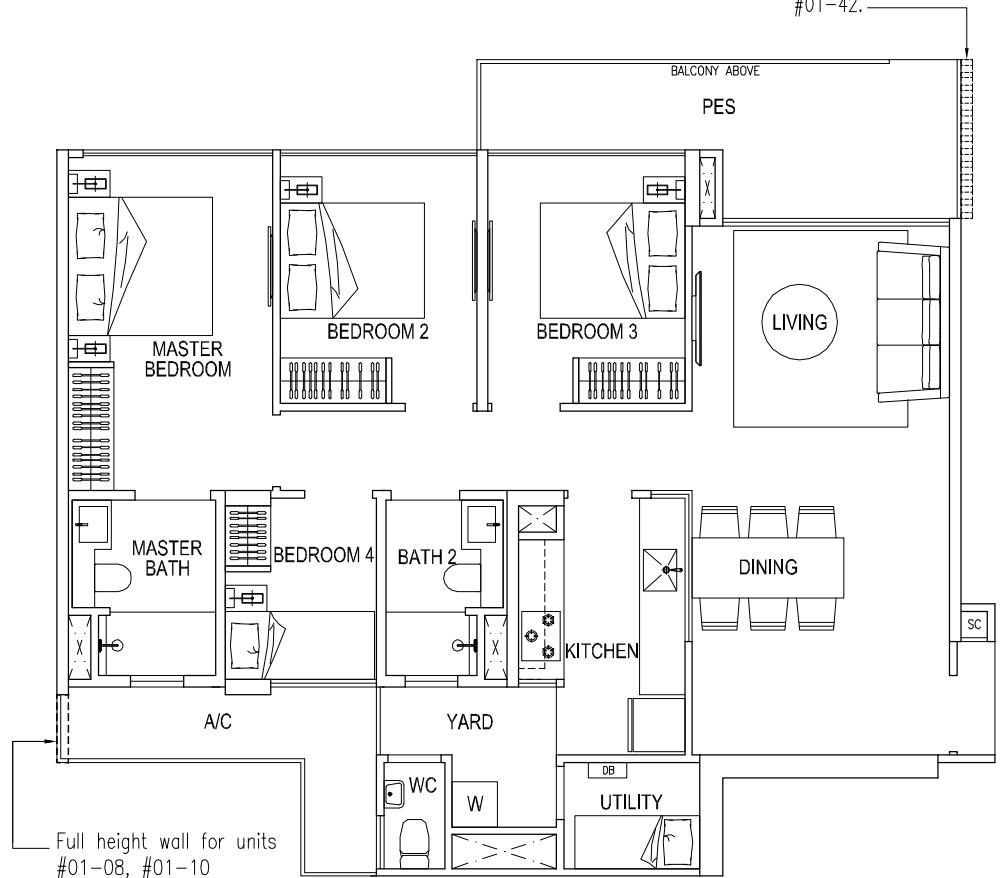
4 - Bedroom

Type D1a (Partial plan)

110 sq m / 1184 sq ft

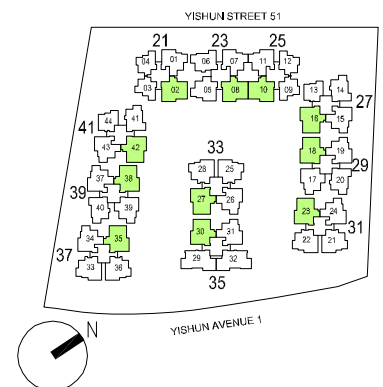
- #01-02
- #01-08
- #01-10 *
- #01-16
- #01-18 *
- #01-23 *
- #01-27
- #01-30 *
- #01-35
- #01-38
- #01-42 *

- screen for units
- #01-10,
- #01-16,
- #01-18,
- #01-23,
- #01-27,
- #01-30,
- #01-35,
- #01-42.



* mirror - image

Area includes A/C ledge, balcony and PES where applicable. Orientations and facings will differ depending on the unit you are purchasing. Please refer to the key plan. The plans are subjected to change as may be required or approved by relevant authorities. All areas are approximate and subject to final survey. The developer and its agents cannot be held liable for any inaccuracies.



4 - Bedroom Premium

Type E1

121 sq m / 1302 sq ft

#02-29 to #11-29, #12-29 (High Ceiling) *

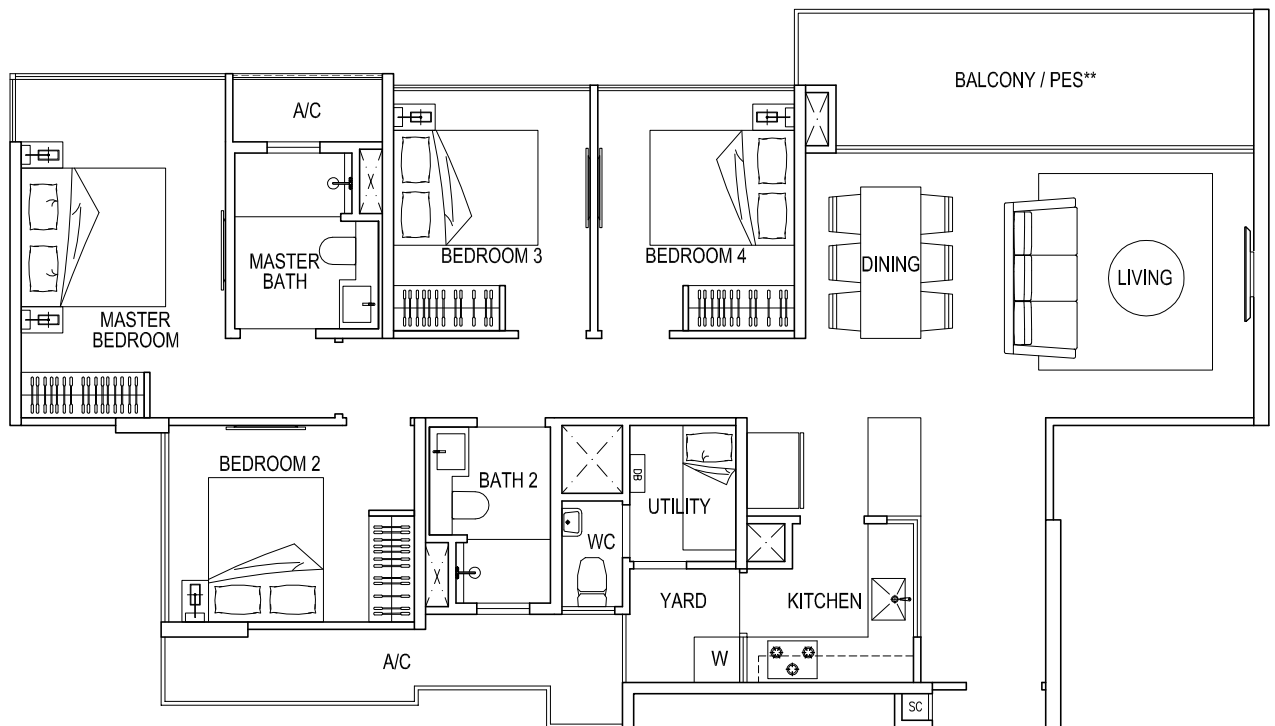
#02-32 to #11-32, #12-32 (High Ceiling)

Type E1a

121 sq m / 1302 sq ft

#01-29 *

#01-32



* mirror – image

**1st storey units PES
in lieu of Balcony

Area includes A/C ledge, balcony and PES where applicable. Orientations and facings will differ depending on the unit you are purchasing. Please refer to the key plan. The plans are subjected to change as may be required or approved by relevant authorities. All areas are approximate and subject to final survey. The developer and its agents cannot be held liable for any inaccuracies.

