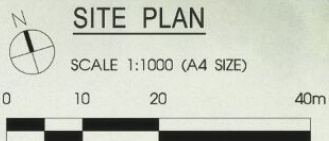




LEGEND

- | | | | |
|---|---|---------------------------------|--------------------------------|
| A GUARD HOUSE | H CABANA | O FAMILY DINING AREA | 2 Bedroom (A1,A1a,A2) |
| B ENTRANCE PORCH (WITH DROP-OFF) | I WATER PLAY AREA | P SITTING AREA | 3 Bedroom (B1,B2,B2a) |
| C POOL DECK | J ADVENTURE PLAYGROUND | Q CLUBHOUSE & GAMES ROOM | 3 Bedroom Premium (B3,B3a,B3b) |
| D AQUA DECK | K FAMILY PAVILION | R TENNIS COURT | 4 Bedroom (C1) |
| E LAP POOL | L GYM(WITH CHANGING ROOM & STEAM ROOM) | S OPEN COMMUNAL COURT | 4 Bedroom Premium (C2) |
| F SPA POOL | M COVE HAMMOCK | T JOGGING TRACK | 5 Bedroom (D) |
| G FAMILY POD | N BBQ CORNER | | |



BASED ON BP APPROVAL NO. A1698-00423-2014-BP01
 APPROVED ON



TYPE A1

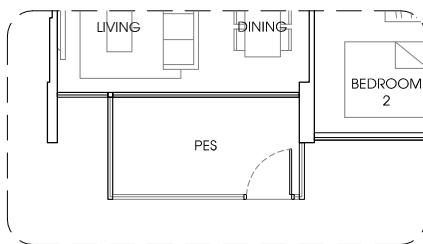
71 sq m / 764 sq ft

#02 - 23 to #14 - 23.

#02 - 31 to #14 - 31.

Mirror Unit.

#02 - 36 to #14 - 36.



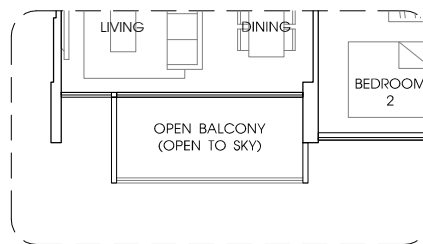
TYPE A1-P

72 sq m / 775 sq ft

#01 - 23, #01 - 31.

Mirror Unit.

#01 - 36.



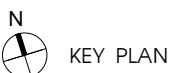
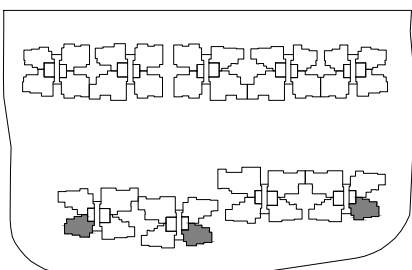
TYPE A1-T

71 sq m / 764 sq ft

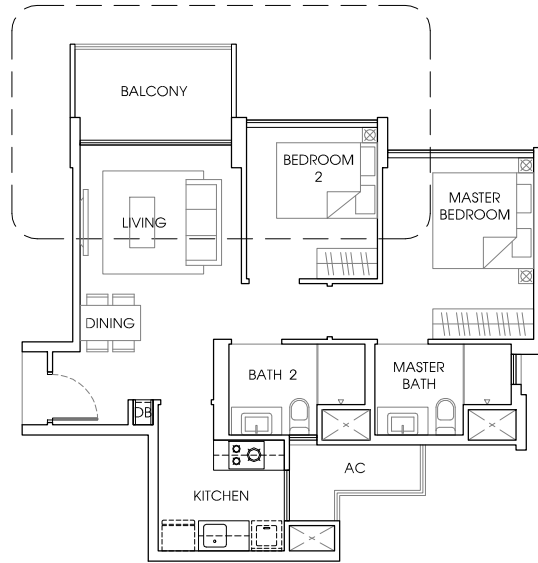
#15 - 23, #15 - 31.

Mirror Unit.

#15 - 36.



Area includes A/C ledge, balcony, PES, roof terrace and void (where applicable). Orientation and facings will differ depending on the unit you are purchasing (please refer to the key plan). All plans are not to scale and subject to changes as may be required by relevant authorities. All floor areas are estimated and subjected to final survey.



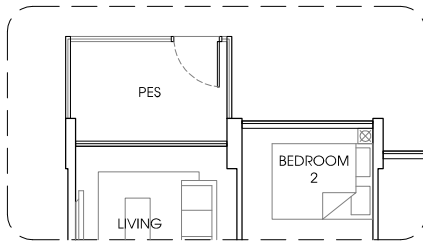
TYPE A1a

70 sq m / 753 sq ft

#02 - 14 to #14 - 14.

Mirror Unit.

#02 - 17 to #14 - 17.



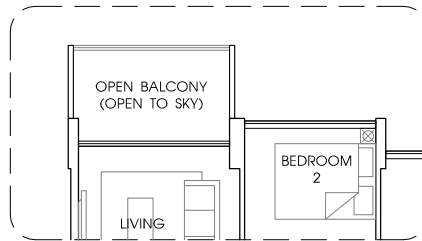
TYPE A1a-P

71 sq m / 764 sq ft

#01 - 14.

Mirror Unit.

#01 - 17.



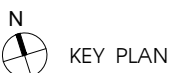
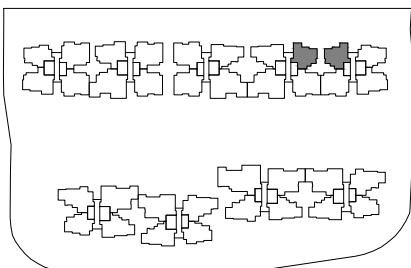
TYPE A1a-T

70 sq m / 753 sq ft

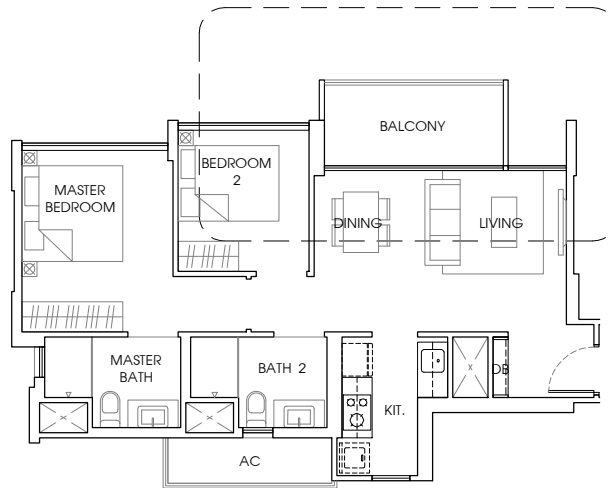
#15 - 14.

Mirror Unit.

#15 - 17.



Area includes A/C ledge, balcony, PES, roof terrace and void (where applicable). Orientation and facings will differ depending on the unit you are purchasing (please refer to the key plan). All plans are not to scale and subject to changes as may be required by relevant authorities. All floor areas are estimated and subjected to final survey.



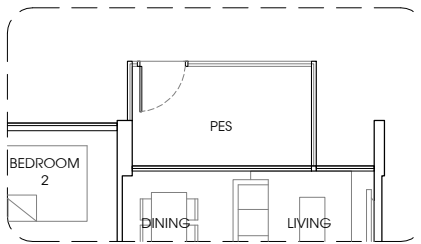
TYPE A2

71 sq m / 764 sq ft

#02 - 01 to #14 - 01.

Mirror Unit.

#02 - 18 to #14 - 18.

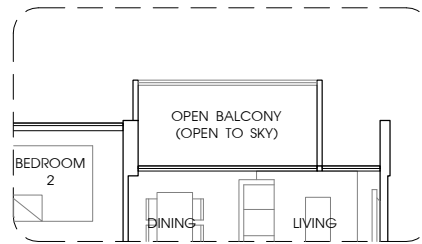


TYPE A2-P

72 sq m / 775 sq ft

Mirror Unit.

#01 - 18.



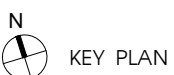
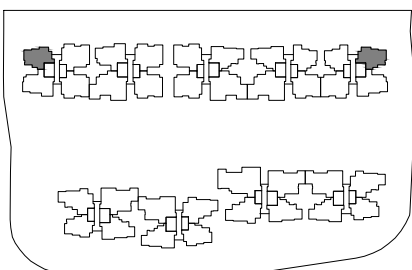
TYPE A2-T

71 sq m / 764 sq ft

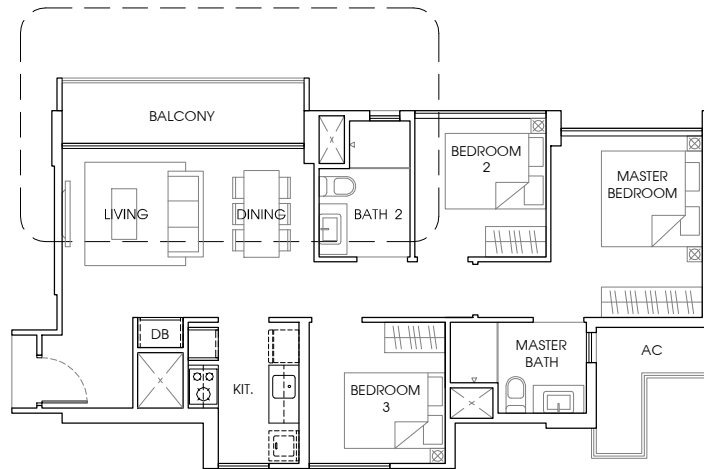
#15 - 01.

Mirror Unit.

#15 - 18.



Area includes A/C ledge, balcony, PES, roof terrace and void (where applicable). Orientation and facings will differ depending on the unit you are purchasing (please refer to the key plan). All plans are not to scale and subject to changes as may be required by relevant authorities. All floor areas are estimated and subjected to final survey.



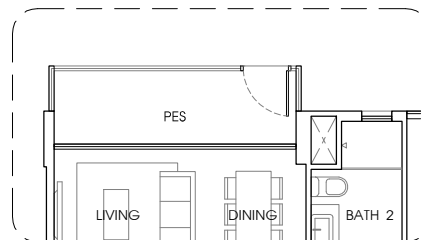
TYPE B1

84 sq m / 904 sq ft

#02 - 10 to #14 - 10, #02 - 24 to #14 - 24,
#02 - 32 to #14 - 32.

Mirror Unit.

#02 - 13 to #14 - 13, #02 - 27 to #14 - 27,
#02 - 35 to #14 - 35.



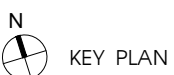
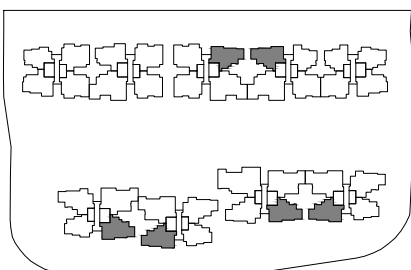
TYPE B1-P

85 sq m / 915 sq ft

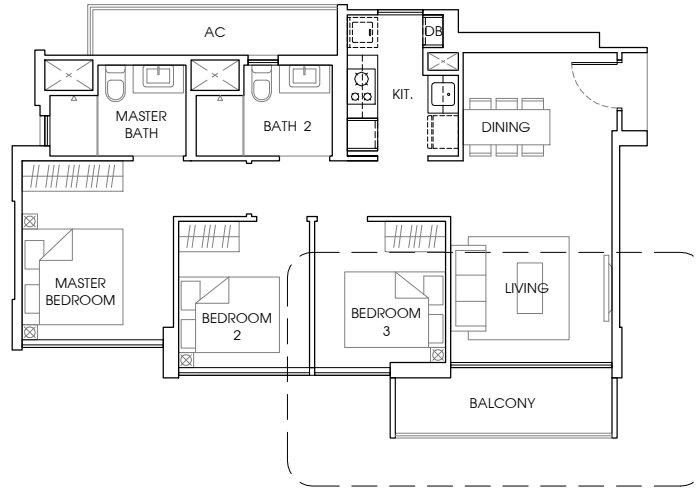
#01 - 10, #01 - 24, #01 - 32.

Mirror Unit.

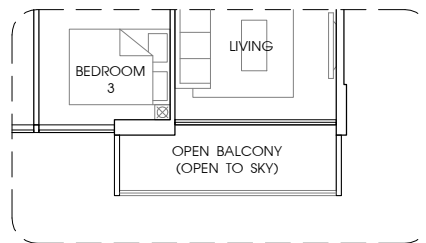
#01 - 13, #01 - 27, #01 - 35.



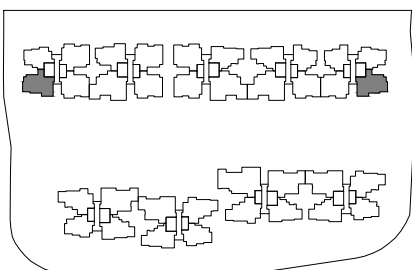
Area includes A/C ledge, balcony, PES, roof terrace and void (where applicable). Orientation and facings will differ depending on the unit you are purchasing (please refer to the key plan). All plans are not to scale and subject to changes as may be required by relevant authorities. All floor areas are estimated and subjected to final survey.




TYPE B2
 85 sq m / 915 sq ft
 #02 - 04 to #14 - 04.
 Mirror Unit.
 #02 - 19 to #14 - 19.

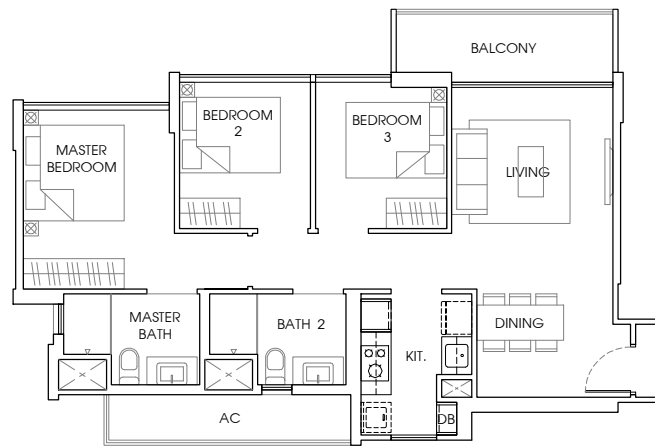


TYPE B2-T
 85 sq m / 915 sq ft
 Mirror Unit.
 #15 - 19.



N
 **KEY PLAN**

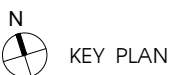
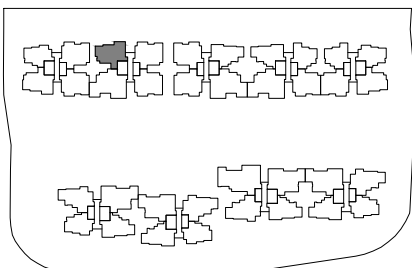
Area includes A/C ledge, balcony, PES, roof terrace and void (where applicable). Orientation and facings will differ depending on the unit you are purchasing (please refer to the key plan). All plans are not to scale and subject to changes as may be required by relevant authorities. All floor areas are estimated and subjected to final survey.



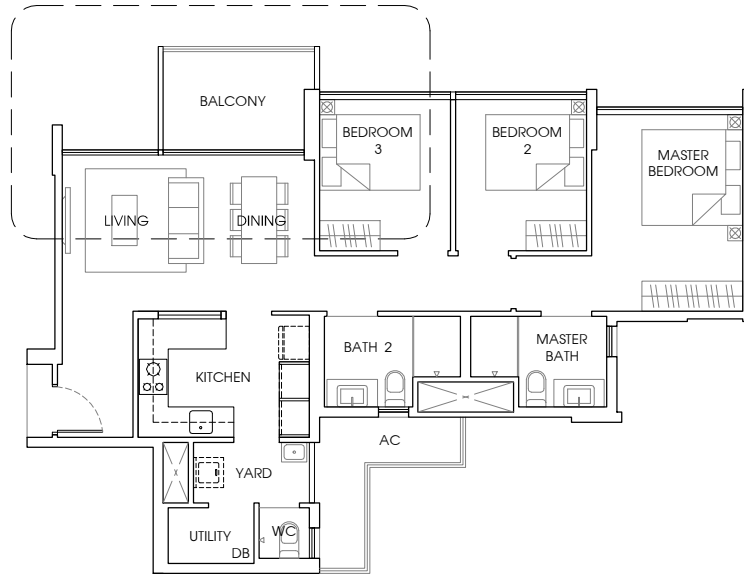
TYPE B2a

85 sq m / 915 sq ft

#02 - 05 to #14 - 05.



Area includes A/C ledge, balcony, PES, roof terrace and void (where applicable). Orientation and facings will differ depending on the unit you are purchasing (please refer to the key plan). All plans are not to scale and subject to changes as may be required by relevant authorities. All floor areas are estimated and subjected to final survey.



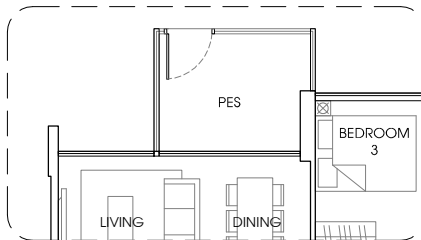
TYPE B3

97 sq m / 1044 sq ft

#02 - 22 to #14 - 22, #02 - 28 to #14 - 28,
#02 - 30 to #14 - 30.

Mirror Unit.

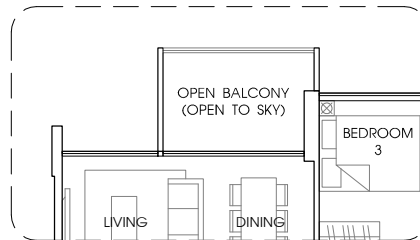
#02 - 33 to #14 - 33.



TYPE B3-P

98 sq m / 1055 sq ft

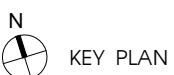
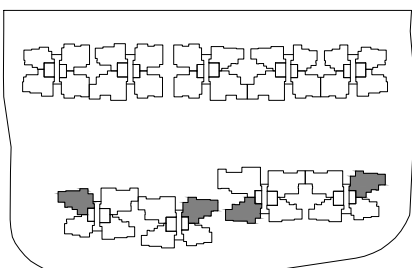
#01 - 28.



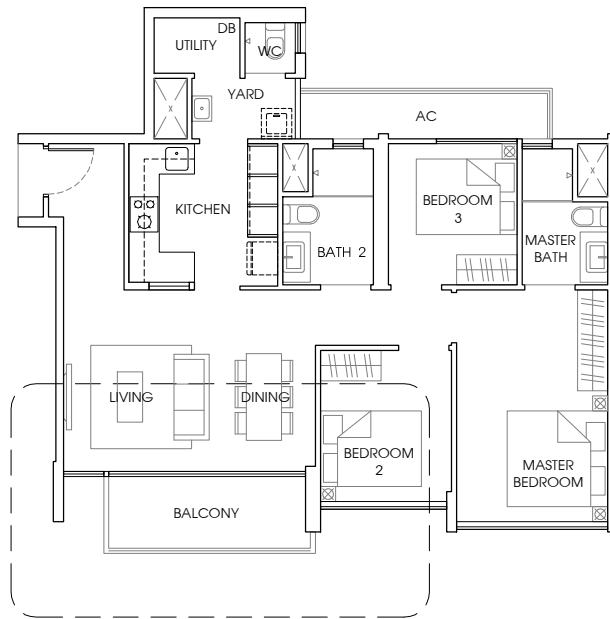
TYPE B3-T

97 sq m / 1044 sq ft

#15 - 22, #15 - 28, #15 - 30.



Area includes A/C ledge, balcony, PES, roof terrace and void (where applicable). Orientation and facings will differ depending on the unit you are purchasing (please refer to the key plan). All plans are not to scale and subject to changes as may be required by relevant authorities. All floor areas are estimated and subjected to final survey.



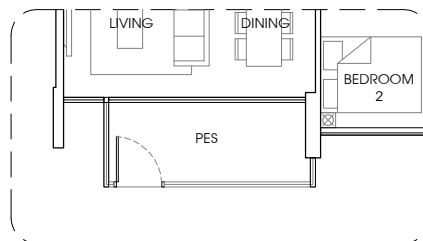
TYPE B3a

96 sq m / 1033 sq ft

#02 - 03 to #14 - 03, #02 - 07 to #14 - 07,
#02 - 15 to #14 - 15.

Mirror Unit.

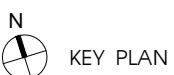
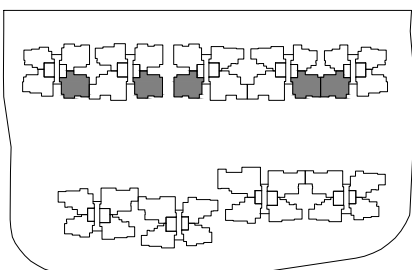
#02 - 12 to #14 - 12, #02 - 20 to #14 - 20.



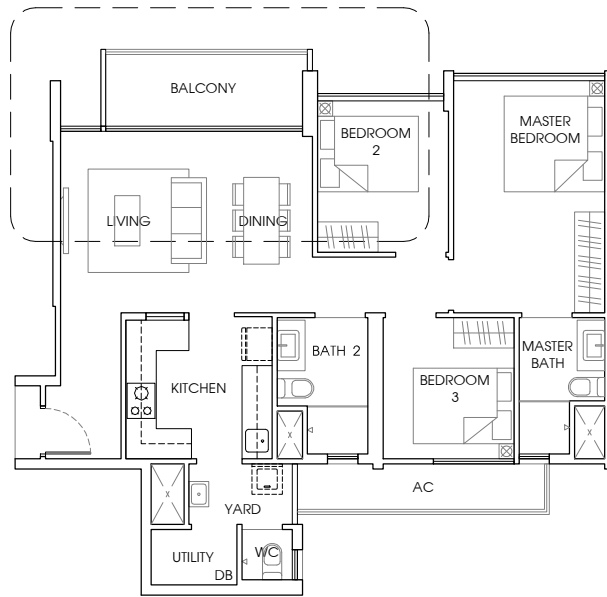
TYPE B3a-P

97 sq m / 1044 sq ft

#01 - 03.



Area includes A/C ledge, balcony, PES, roof terrace and void (where applicable). Orientation and facings will differ depending on the unit you are purchasing (please refer to the key plan). All plans are not to scale and subject to changes as may be required by relevant authorities. All floor areas are estimated and subjected to final survey.



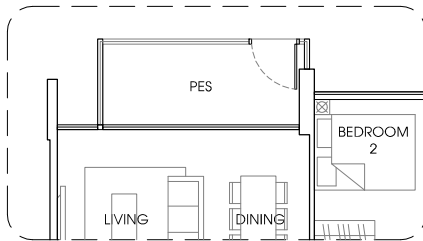
TYPE B3b

96 sq m / 1033 sq ft

#02 - 02 to #14 - 02, #02 - 06 to #14 - 06.

Mirror Unit.

#02 - 09 to #14 - 09.



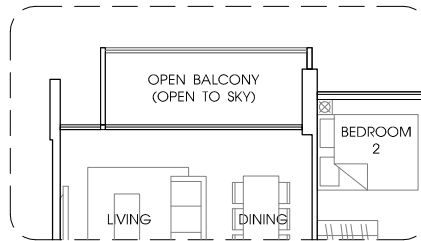
TYPE B3b-P

97 sq m / 1044 sq ft

#01 - 06.

Mirror Unit.

#01 - 09.



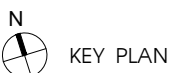
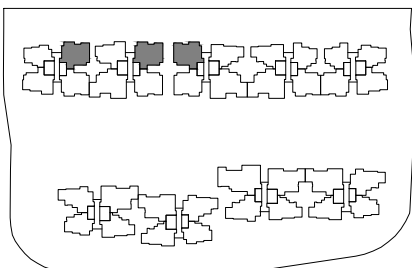
TYPE B3b-T

96 sq m / 1033 sq ft

#15 - 06.

Mirror Unit.

#15 - 09.



Area includes A/C ledge, balcony, PES, roof terrace and void (where applicable). Orientation and facings will differ depending on the unit you are purchasing (please refer to the key plan). All plans are not to scale and subject to changes as may be required by relevant authorities. All floor areas are estimated and subjected to final survey.



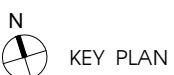
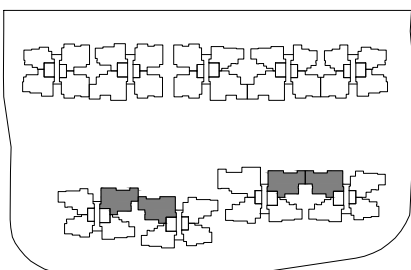
TYPE C1

118 sq m / 1270 sq ft

#02 - 21 to #14 - 21, #02 - 29 to #14 - 29.

Mirror Unit.

#02 - 26 to #14 - 26, #02 - 34 to #14 - 34.



Area includes A/C ledge, balcony, PES, roof terrace and void (where applicable). Orientation and facings will differ depending on the unit you are purchasing (please refer to the key plan). All plans are not to scale and subject to changes as may be required by relevant authorities. All floor areas are estimated and subjected to final survey.



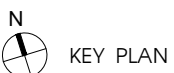
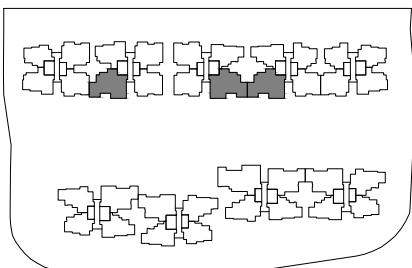
TYPE C2

131 sq m / 1410sq ft

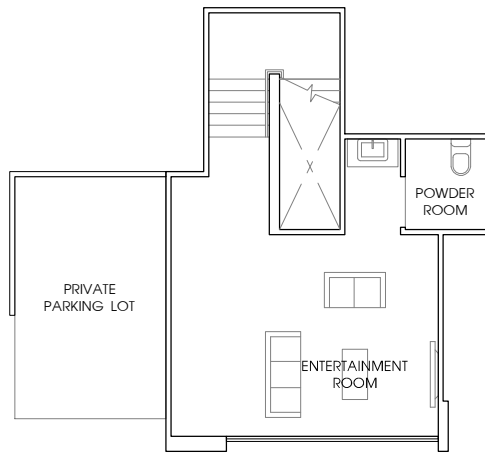
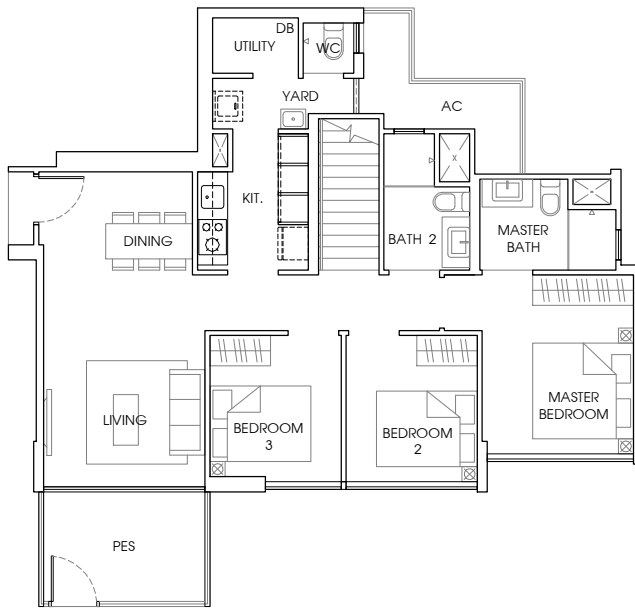
#02 - 08 to #14 - 08, #02 - 16 to #14 - 16.

Mirror Unit.

#02 - 11 to #14 - 11.



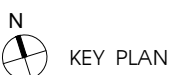
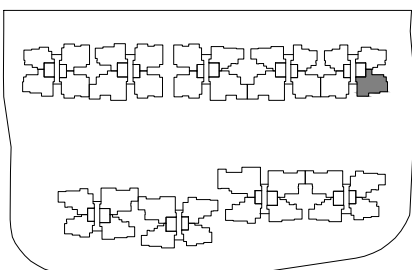
Area includes A/C ledge, balcony, PES, roof terrace and void (where applicable). Orientation and facings will differ depending on the unit you are purchasing (please refer to the key plan). All plans are not to scale and subject to changes as may be required by relevant authorities. All floor areas are estimated and subjected to final survey.



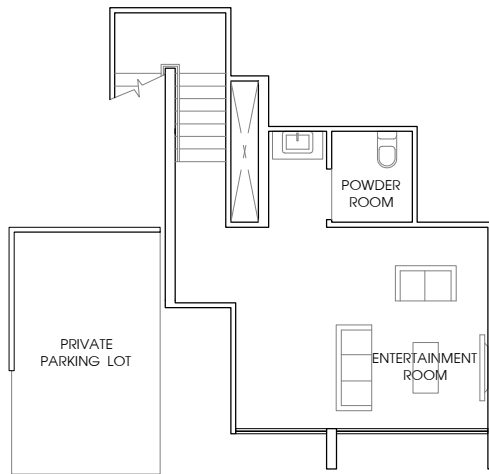
TYPE C3-P

153 sq m / 1647 sq ft

#01 - 19.



Area includes A/C ledge, balcony, PES, roof terrace and void (where applicable). Orientation and facings will differ depending on the unit you are purchasing (please refer to the key plan). All plans are not to scale and subject to changes as may be required by relevant authorities. All floor areas are estimated and subjected to final survey.



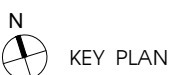
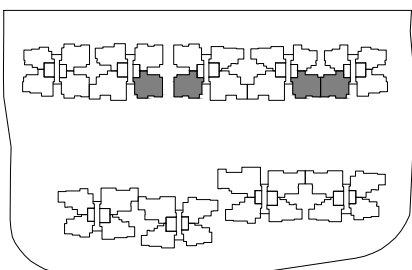
TYPE C4-P

156 sq m / 1679 sq ft

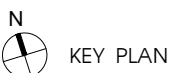
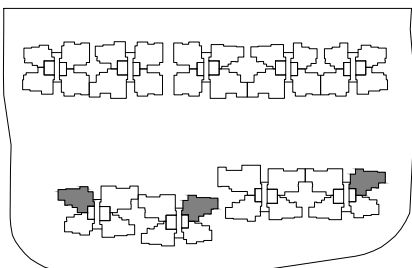
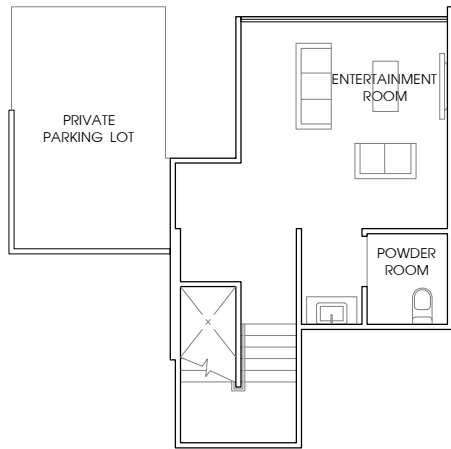
#01 - 07, #01 - 15.

Mirror Unit.

#01 - 12, #01 - 20.



Area includes A/C ledge, balcony, PES, roof terrace and void (where applicable). Orientation and facings will differ depending on the unit you are purchasing (please refer to the key plan). All plans are not to scale and subject to changes as may be required by relevant authorities. All floor areas are estimated and subjected to final survey.



TYPE C5-P

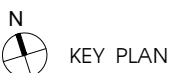
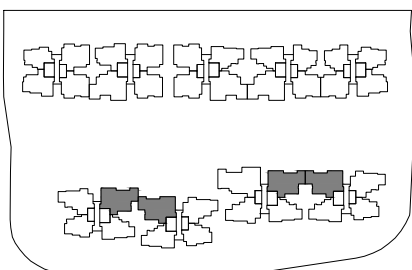
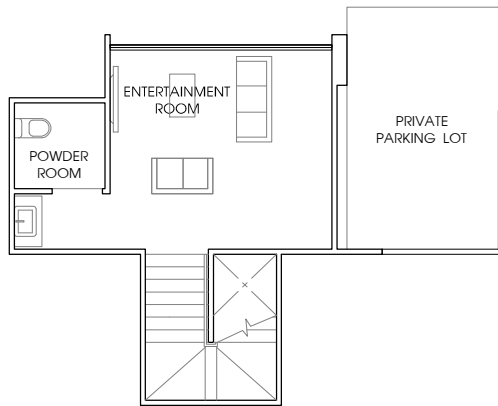
155 sq m / 1668 sq ft

#01 - 22, #01 - 30.

Mirror Unit.

#01 - 33.

Area includes A/C ledge, balcony, PES, roof terrace and void (where applicable). Orientation and facings will differ depending on the unit you are purchasing (please refer to the key plan). All plans are not to scale and subject to changes as may be required by relevant authorities. All floor areas are estimated and subjected to final survey.



TYPE C6-P

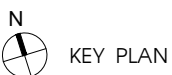
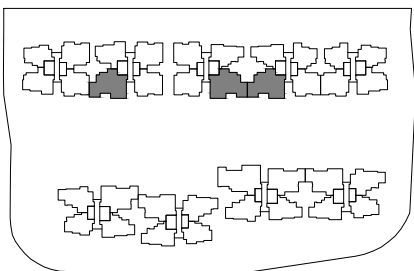
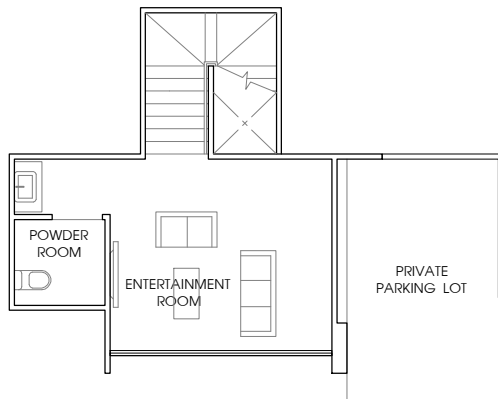
159 sq m / 1712 sq ft

#01 - 21, #01 - 29.

Mirror Unit.

#01 - 26, #01 - 34.

Area includes A/C ledge, balcony, PES, roof terrace and void (where applicable). Orientation and facings will differ depending on the unit you are purchasing (please refer to the key plan). All plans are not to scale and subject to changes as may be required by relevant authorities. All floor areas are estimated and subjected to final survey.



TYPE C7-P

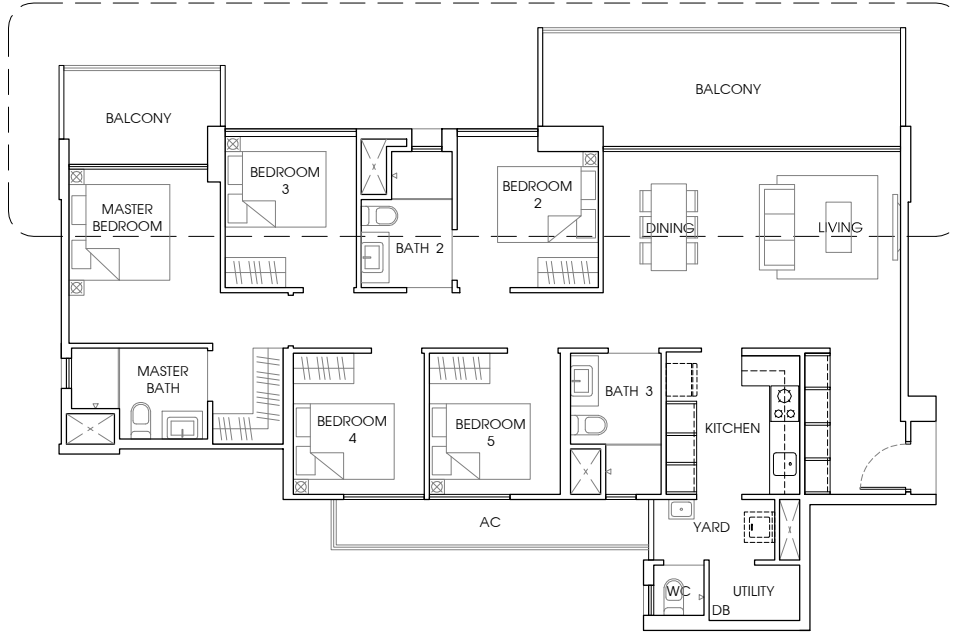
160 sq m / 1722 sq ft

#01 - 08, #01-16.

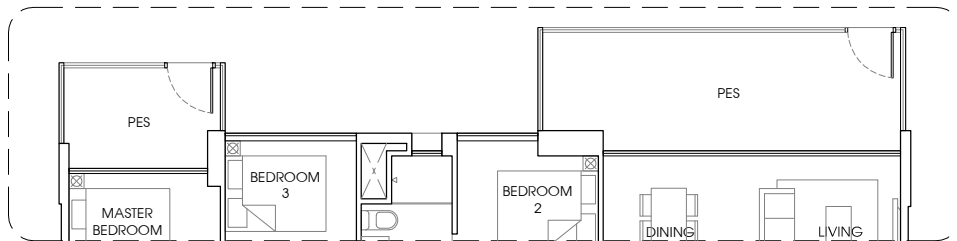
Mirror Unit.

#01 - 11.

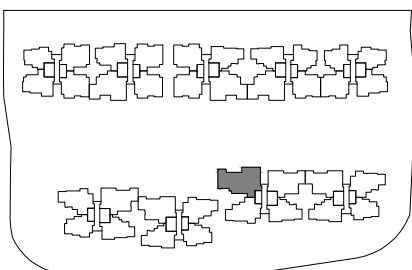
Area includes A/C ledge, balcony, PES, roof terrace and void (where applicable). Orientation and facings will differ depending on the unit you are purchasing (please refer to the key plan). All plans are not to scale and subject to changes as may be required by relevant authorities. All floor areas are estimated and subjected to final survey.




TYPE D
 148 sq m / 1593ft
 #02 - 25 to #14 - 25.

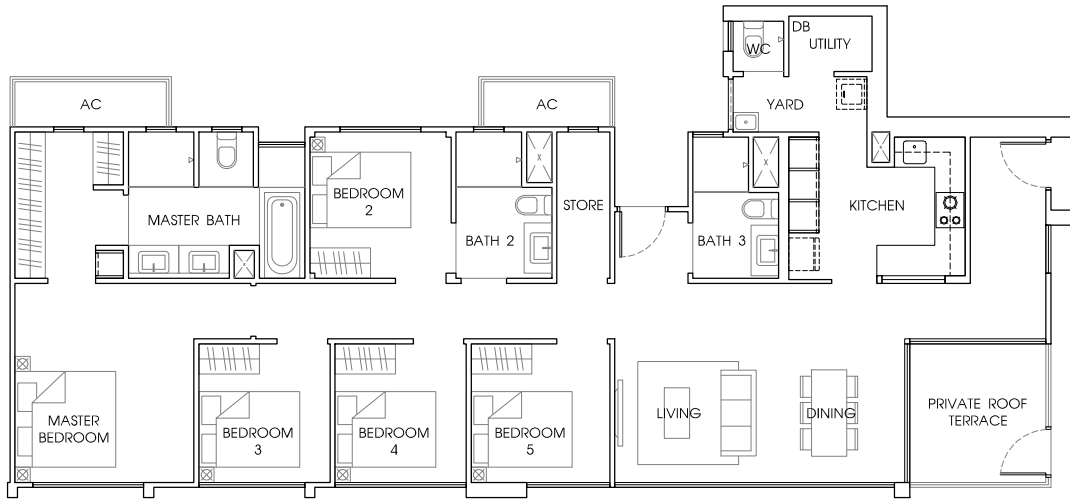


TYPE D-P
 149 sq m / 1604 sq ft
 #01 - 25.

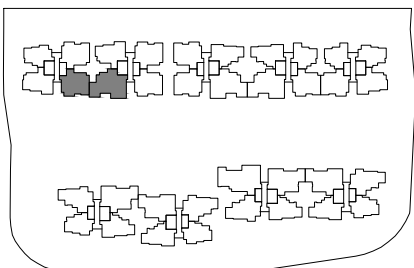



N
 **KEY PLAN**

Area includes A/C ledge, balcony, PES, roof terrace and void (where applicable). Orientation and facings will differ depending on the unit you are purchasing (please refer to the key plan). All plans are not to scale and subject to changes as may be required by relevant authorities. All floor areas are estimated and subjected to final survey.

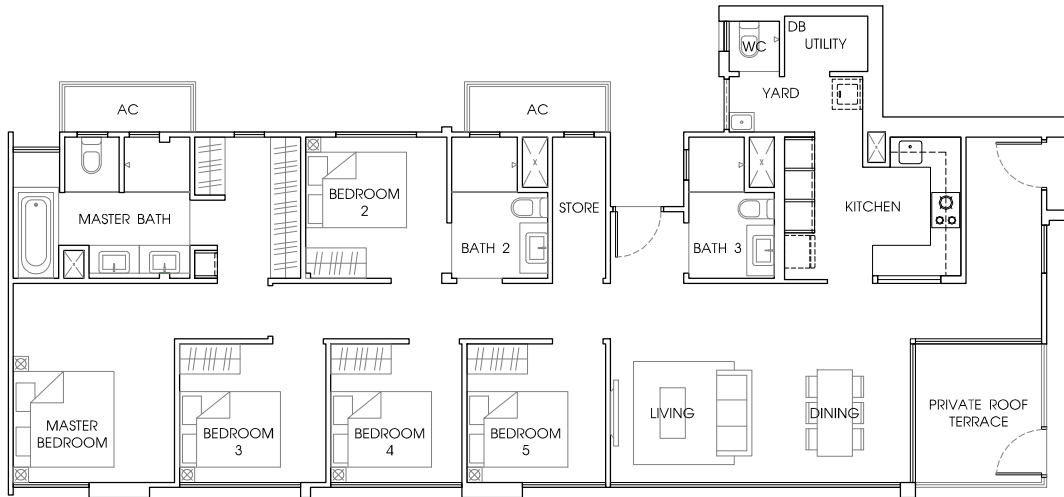


TYPE PH1
 155 sq m / 1668 sq ft
 #15 - 08.



N
 **KEY PLAN**

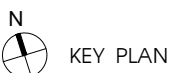
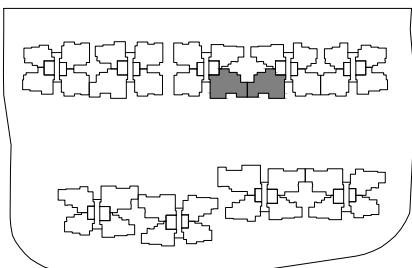
Area includes A/C ledge, balcony, PES, roof terrace and void (where applicable). Orientation and facings will differ depending on the unit you are purchasing (please refer to the key plan). All plans are not to scale and subject to changes as may be required by relevant authorities. All floor areas are estimated and subjected to final survey.



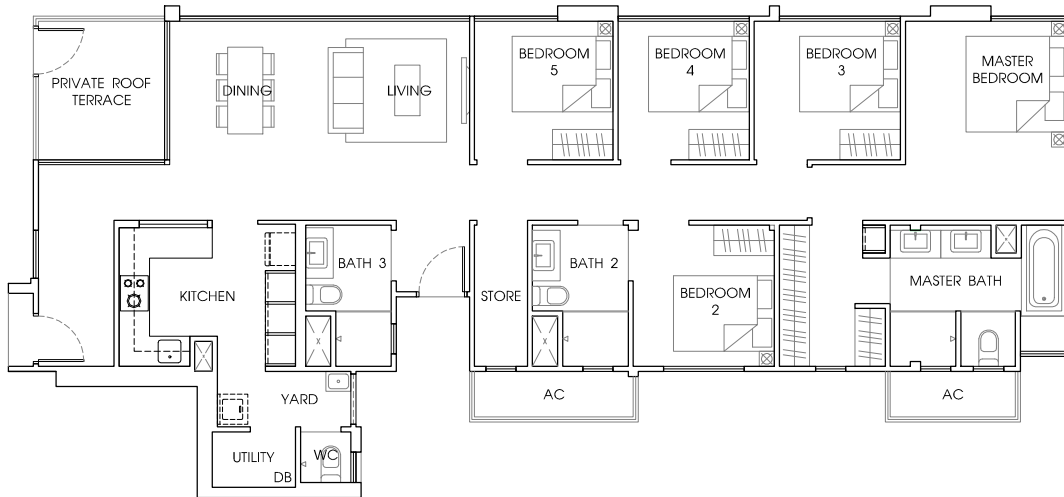
TYPE PH2

154 sq m / 1658 sq ft

#15 - 16.



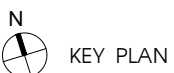
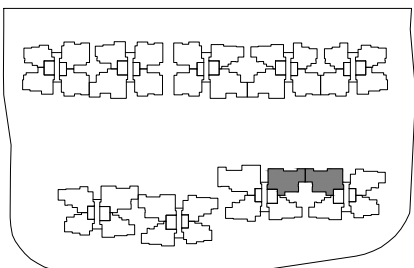
Area includes A/C ledge, balcony, PES, roof terrace and void (where applicable). Orientation and facings will differ depending on the unit you are purchasing (please refer to the key plan). All plans are not to scale and subject to changes as may be required by relevant authorities. All floor areas are estimated and subjected to final survey.



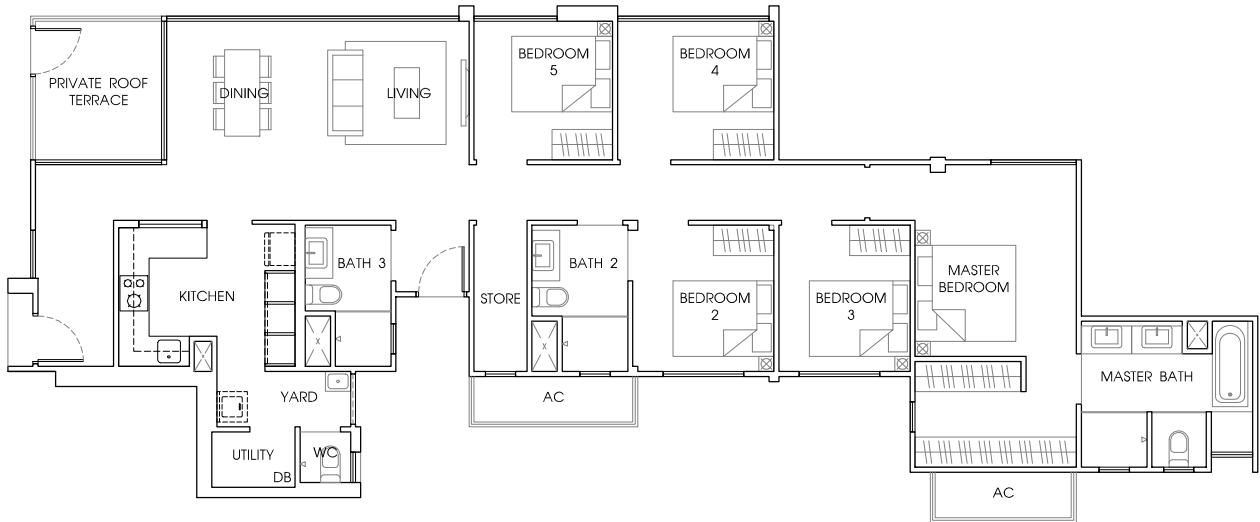
TYPE PH3

154 sq m / 1658 sq ft

#15 - 26.



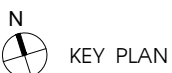
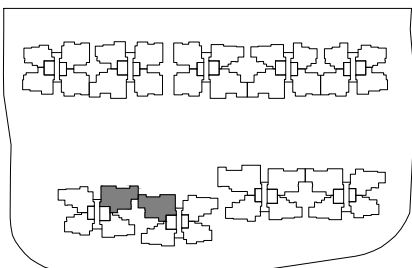
Area includes A/C ledge, balcony, PES, roof terrace and void (where applicable). Orientation and facings will differ depending on the unit you are purchasing (please refer to the key plan). All plans are not to scale and subject to changes as may be required by relevant authorities. All floor areas are estimated and subjected to final survey.



TYPE PH4

157 sq m / 1690 sq ft

#15 - 34.



Area includes A/C ledge, balcony, PES, roof terrace and void (where applicable). Orientation and facings will differ depending on the unit you are purchasing (please refer to the key plan). All plans are not to scale and subject to changes as may be required by relevant authorities. All floor areas are estimated and subjected to final survey.