

River-edge Meander

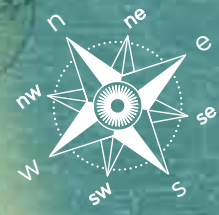
- ① Guard house
- ② Entrance garden
- ③ Discovery trail
- ④ Water edge viewing deck
- ⑤ River bank boardwalk
- ⑥ Teppanyaki corner
- ⑦ Rainforest skylight
- ⑧ Butterfly-watching pod
- ⑨ Strolling trail

Enchanting Lagoon

- ⑩ Arrival plaza
- ⑪ Spring courtyard
- ⑫ Sculptural gazebo
- ⑬ Reflective pool
- ⑭ Aquatic adventure corner
- ⑮ Pool deck
- ⑯ Child-friendly water playground:
 - Rainbow rings
 - Multi-hued mushrooms
 - Overhead fountain
 - Nanny's corner
- ⑰ 50m lap pool
- ⑱ Eco trellis and spa pool
- ⑲ Meditation garden
- ⑳ Relaxation lounge
- ㉑ Hydro spa pool
- ㉒ Poolside dining corner
- ㉓ Floating club pavilion
- ㉔ Gymnasium by the water
- ㉕ Rainforest skylight

Serene Grove

- ㉖ Ascending boardwalk
- ㉗ Wellness corner
- ㉘ Green-sheathed tennis court
- ㉙ Pedestrian side gate
- ㉚ Spice garden
- ㉛ Resting pod
- ㉜ Sensory trail
- ㉝ Herb garden
- ㉞ Lawn court
- ㉟ Rainforest skylight



0 10 20 30 meters

artist's impression

Unit Distribution

block 51

Level	Unit			
	01	02	03	04
	penthouse PH5 DK	water tank	penthouse PH3 DK	penthouse PH4
17				
16				
15				
14				
13				
12				
11				
10	4 bedroom dual key C2 DK	3 bedroom standard B3	3 bedroom dual key B4 DK	4 bedroom standard C1
9				
8				
7				
6				
5				
4				
3				
2				
1	C2-P1 DK	B3-P1	B4-P1 DK	C1-P1

block 55

Level	Unit			
	09	10	11	12
	penthouse PH3 DK	penthouse PH3 DK	water tank	penthouse PH4
16				
15				
14				
13				
12				
11				
10	3 bedroom dual key B4 DK	3 bedroom dual key B4 DK	3 bedroom standard B3	4 bedroom standard C1
9				
8				
7				
6				
5				
4				
3				
2	B4a DK			C1a
1	car park	B4-P2 DK	B3-P2	car park

block 61

Level	Unit			
	17	18	19	20
	penthouse PH5 DK	penthouse PH2	penthouse PH3 DK	water tank
17				
16				
15				
14				
13				
12				
11				
10	4 bedroom dual key C2 DK	3 bedroom standard B3	3 bedroom dual key B4 DK	4 bedroom standard C1
9				
8				
7				
6				
5				
4				
3				
2				
1	C2-P1 DK	B3-P1	B4-P1 DK	C1-P1

block 53

Level	Unit			
	05	06	07	08
	penthouse PH7 DK	water tank	penthouse PH1	penthouse PH6
17				
16				
15				
14				
13				
12				
11				
10	5 bedroom dual key D2 DK	2 bedroom standard A1	3 bedroom standard B2	5 bedroom standard D1
9				
8				
7				
6				
5				
4				
3				
2		A1a	B2a	
1	D2-P2 DK	car park		D1-P2

block 57

Level	Unit			
	13	14	15	16
	penthouse PH4	water tank	penthouse PH2	penthouse PH5 DK
16				
15				
14				
13				
12				
11				
10	4 bedroom standard C1	3 bedroom standard B1	3 bedroom standard B3	4 bedroom dual key C2 DK
9				
8				
7				
6				
5				
4				
3				
2		B1a	B3a	
1	C1-P2	car park		C2-P2 DK

block 63

Level	Unit			
	21	22	23	24
	penthouse PH4	water tank	penthouse PH2	penthouse PH5 DK
17				
16				
15				
14				
13				
12				
11				
10	4 bedroom standard C1	3 bedroom standard B1	3 bedroom standard B3	4 bedroom dual key C2 DK
9				
8				
7				
6				
5				
4				
3				
2				
1	C1-P1	B1-P1	B3-P1	C2-P1 DK

5 bedroom standard

5 bedroom dual key

4 bedroom standard

4 bedroom dual key

3 bedroom standard

3 bedroom dual key

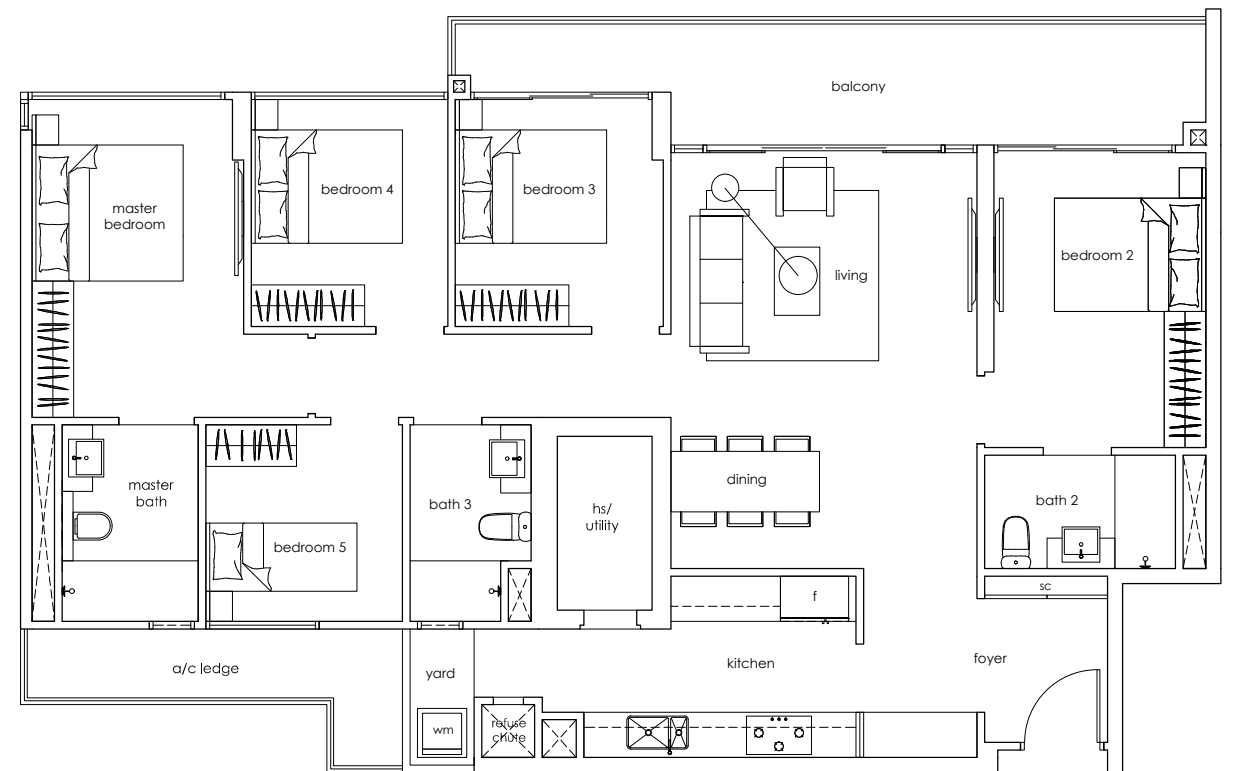
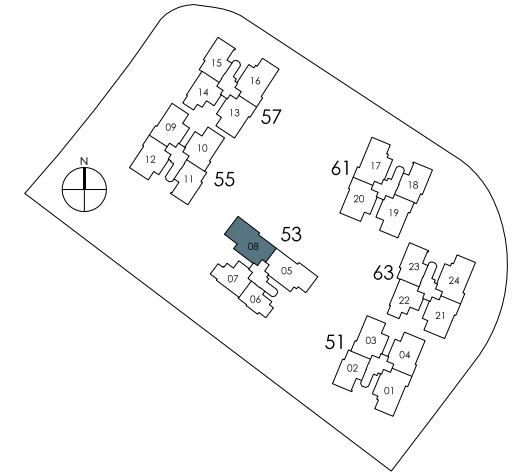
2 bedroom





5 bedroom

standard D1
 139 sqm / 1,496 sqft
 #02 to #16-08



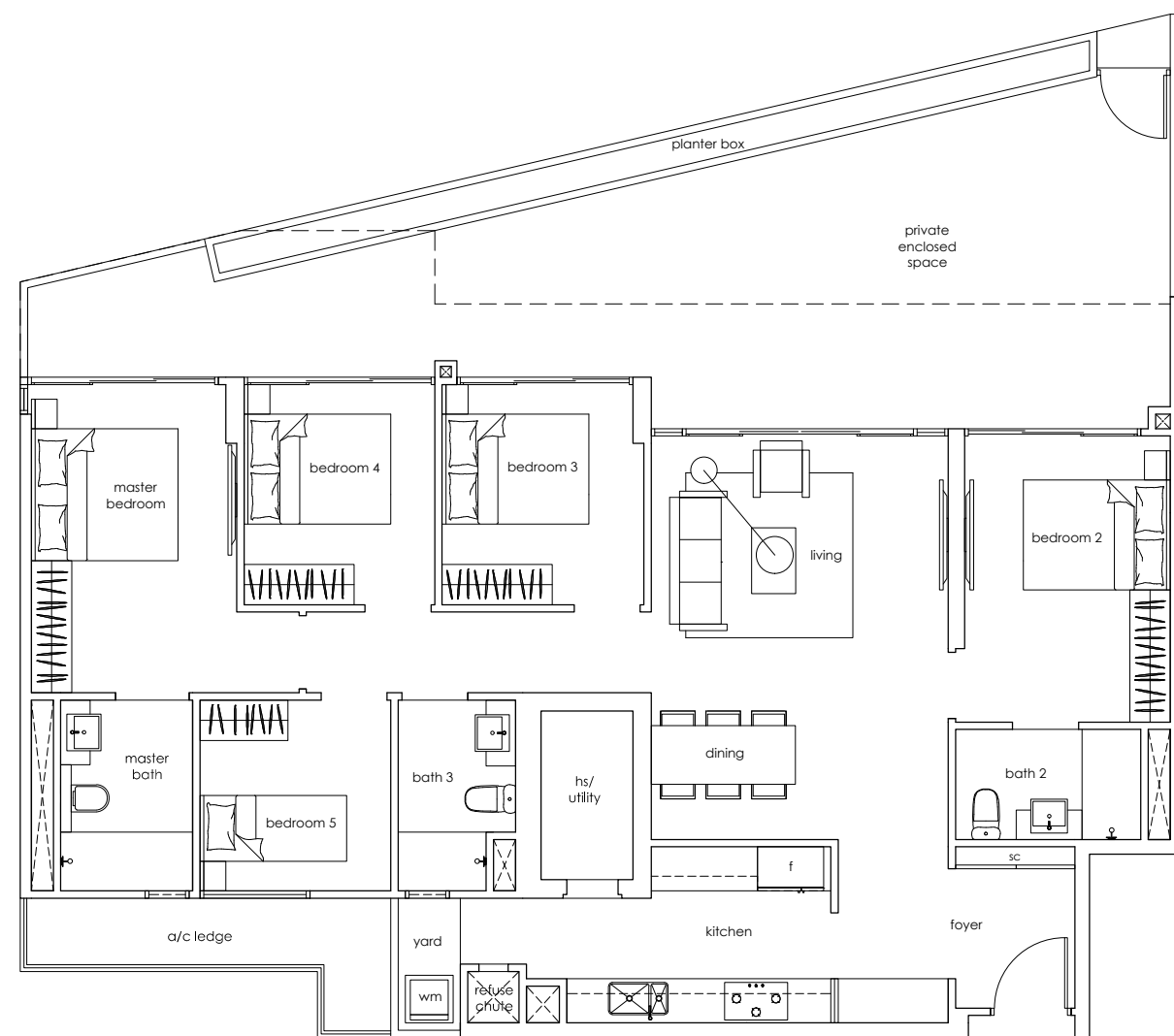
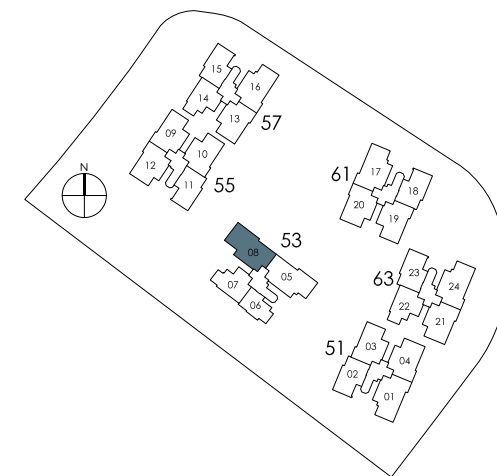
Area includes A/C ledge, balcony, PES, open terrace and void (where applicable). The plans are subject to change as may be required or approved by the relevant authorities. These are not drawn to scale and are for purpose of a visual representation of the different layouts that are available. All areas are approximate and subject to final survey. The developer and its agents cannot be held liable for any inaccuracies.



Image by Muji

5 bedroom

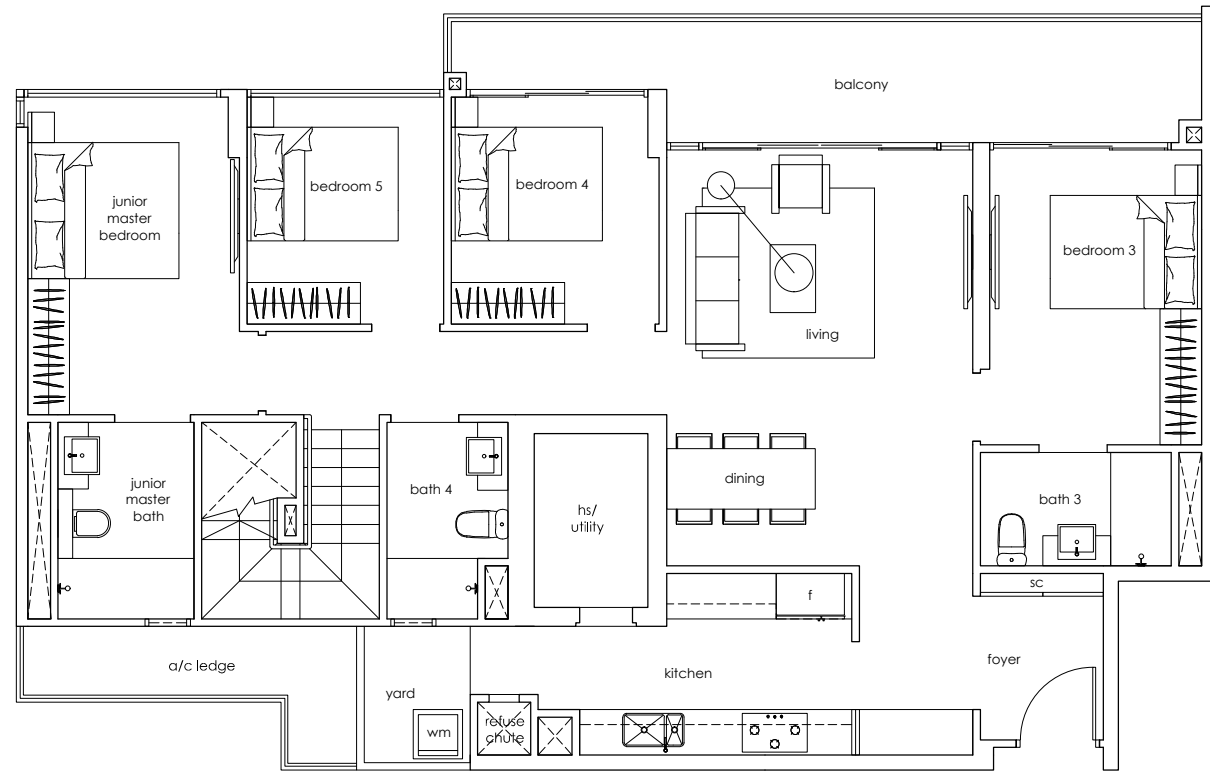
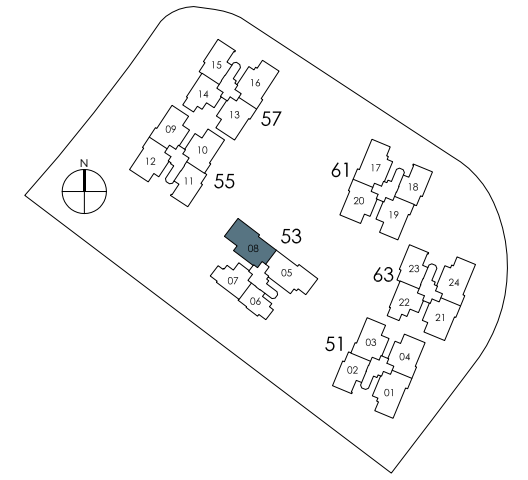
standard D1-p2
 179 sqm / 1,927 sqft
 #01-08



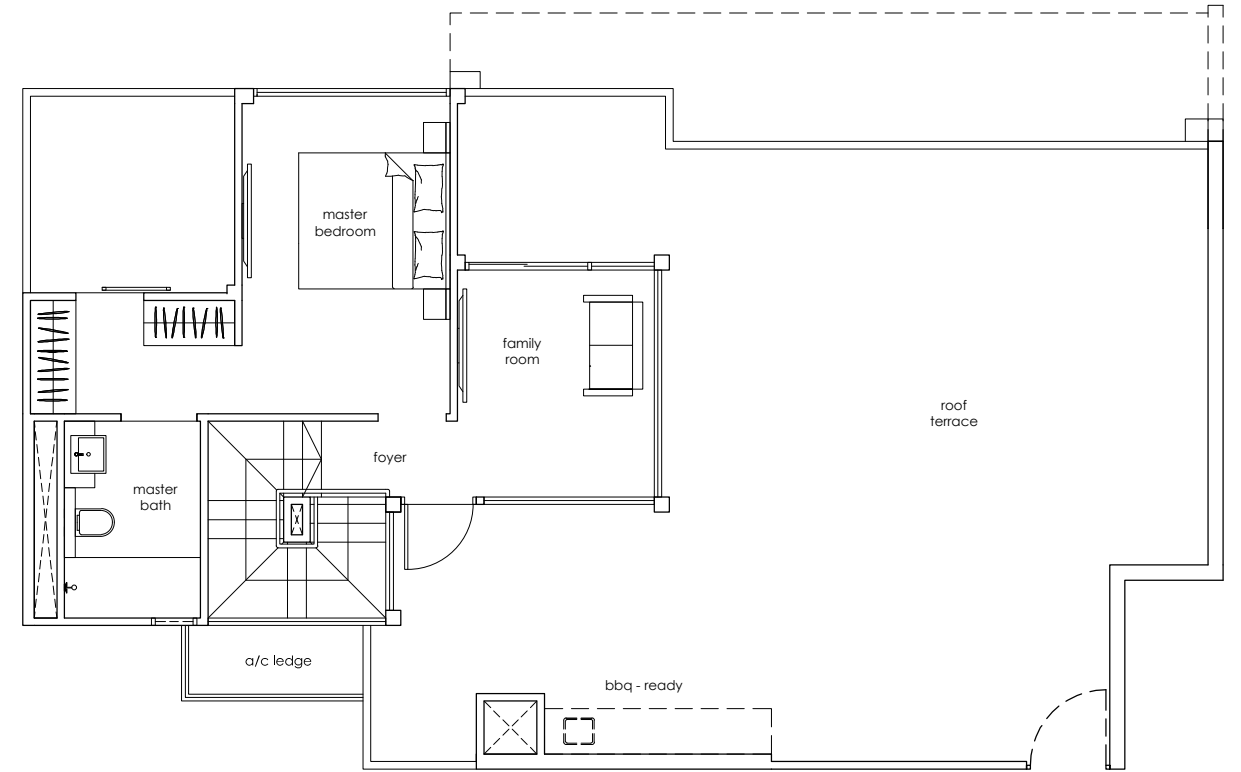
Area includes A/C ledge, balcony, PES, open terrace and void (where applicable). The plans are subject to change as may be required or approved by the relevant authorities. These are not drawn to scale and are for purpose of a visual representation of the different layouts that are available. All areas are approximate and subject to final survey. The developer and its agents cannot be held liable for any inaccuracies.

5+1 bedroom penthouse

standard PH6
264 sqm / 2,841 sqft
#17-08



lower level



upper level

Area includes A/C ledge, balcony, PES, open terrace and void (where applicable). The plans are subject to change as may be required or approved by the relevant authorities. These are not drawn to scale and are for purpose of a visual representation of the different layouts that are available. All areas are approximate and subject to final survey. The developer and its agents cannot be held liable for any inaccuracies.

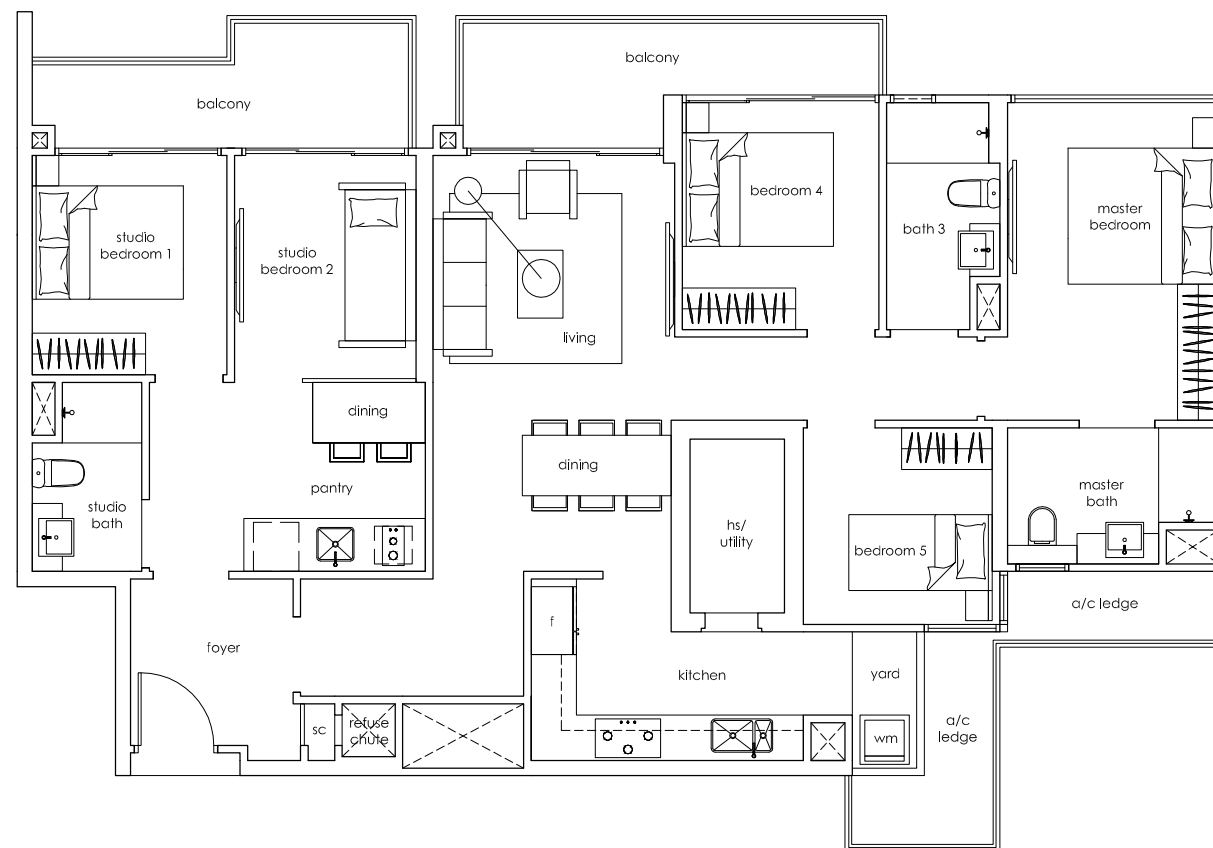
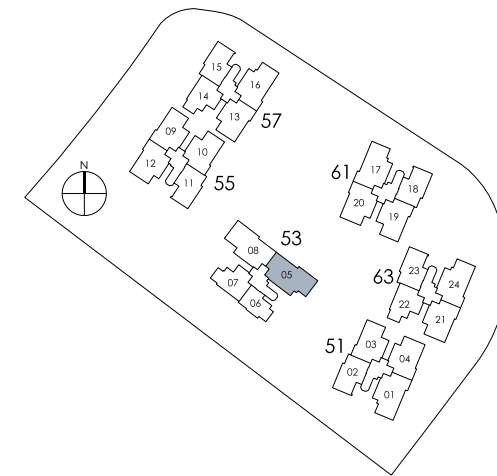
Area includes A/C ledge, balcony, PES, open terrace and void (where applicable). The plans are subject to change as may be required or approved by the relevant authorities. These are not drawn to scale and are for purpose of a visual representation of the different layouts that are available. All areas are approximate and subject to final survey. The developer and its agents cannot be held liable for any inaccuracies.



image by Mujl

5 bedroom (dual key)

dual key D2
 140 sqm / 1,507 sqft
 #02 to #16-05



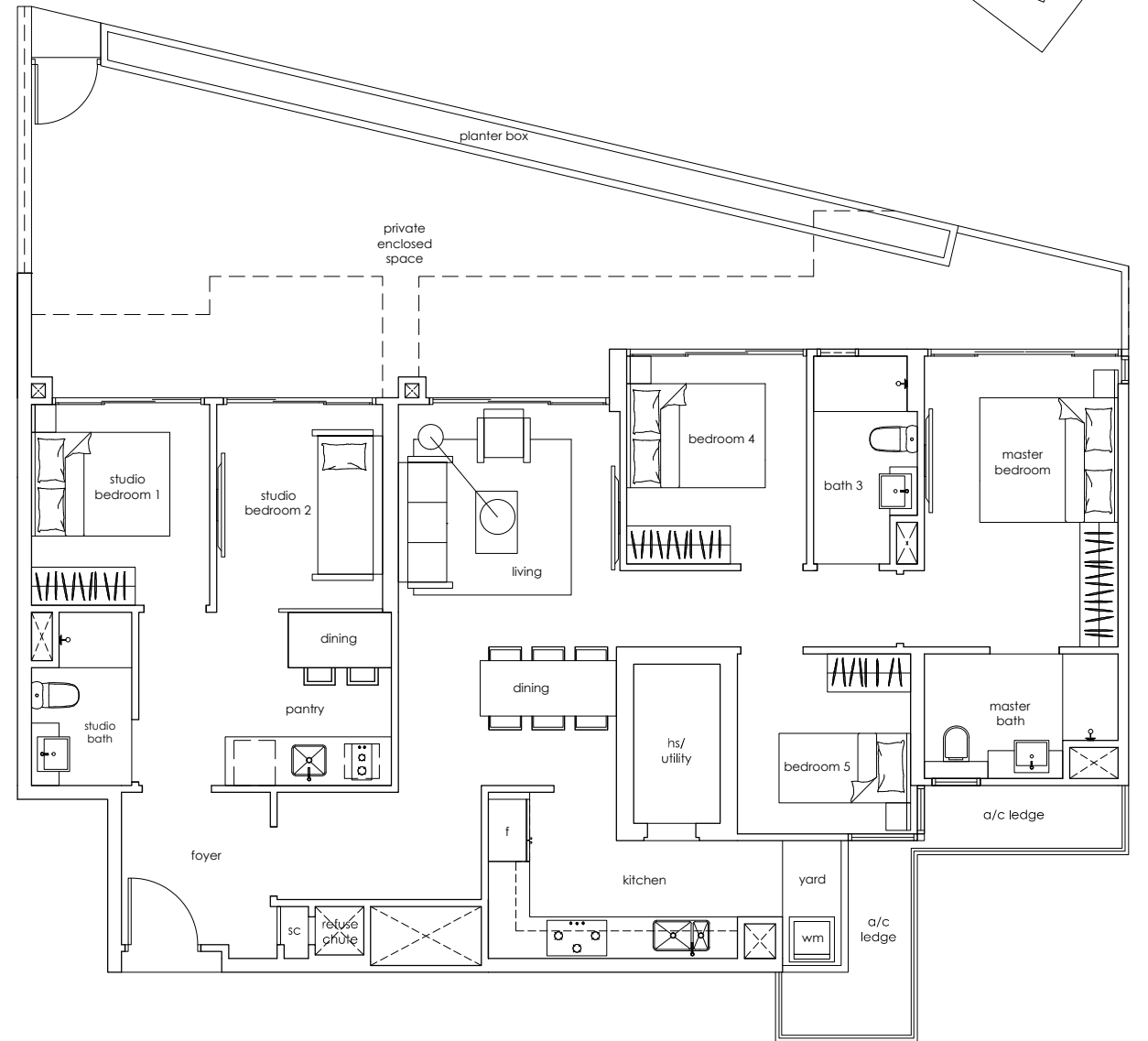
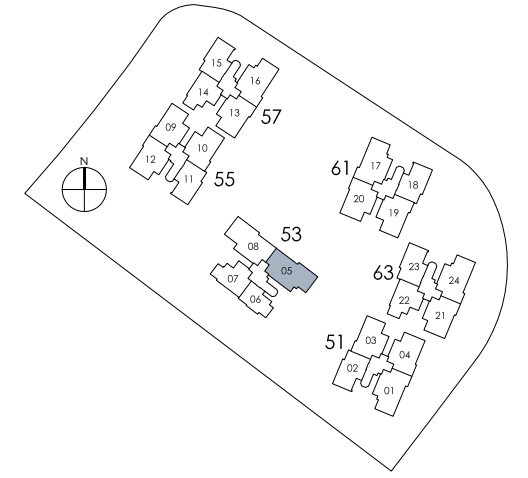
Area includes A/C ledge, balcony, PES, open terrace and void (where applicable). The plans are subject to change as may be required or approved by the relevant authorities. These are not drawn to scale and are for purpose of a visual representation of the different layouts that are available. All areas are approximate and subject to final survey. The developer and its agents cannot be held liable for any inaccuracies.



image by Muji

5 bedroom (dual key)

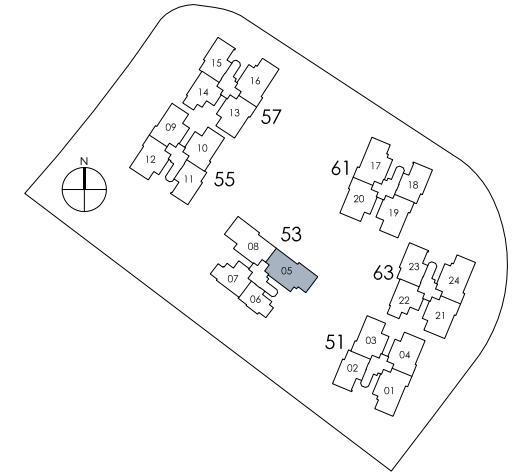
dual key D2-p2
 180 sqm / 1,938 sqft
 #01-05



Area includes A/C ledge, balcony, PES, open terrace and void (where applicable). The plans are subject to change as may be required or approved by the relevant authorities. These are not drawn to scale and are for purpose of a visual representation of the different layouts that are available. All areas are approximate and subject to final survey. The developer and its agents cannot be held liable for any inaccuracies.

5+1 bedroom (dual key) penthouse

dual key PH7
264 sqm / 2,841 sqft
#17-05

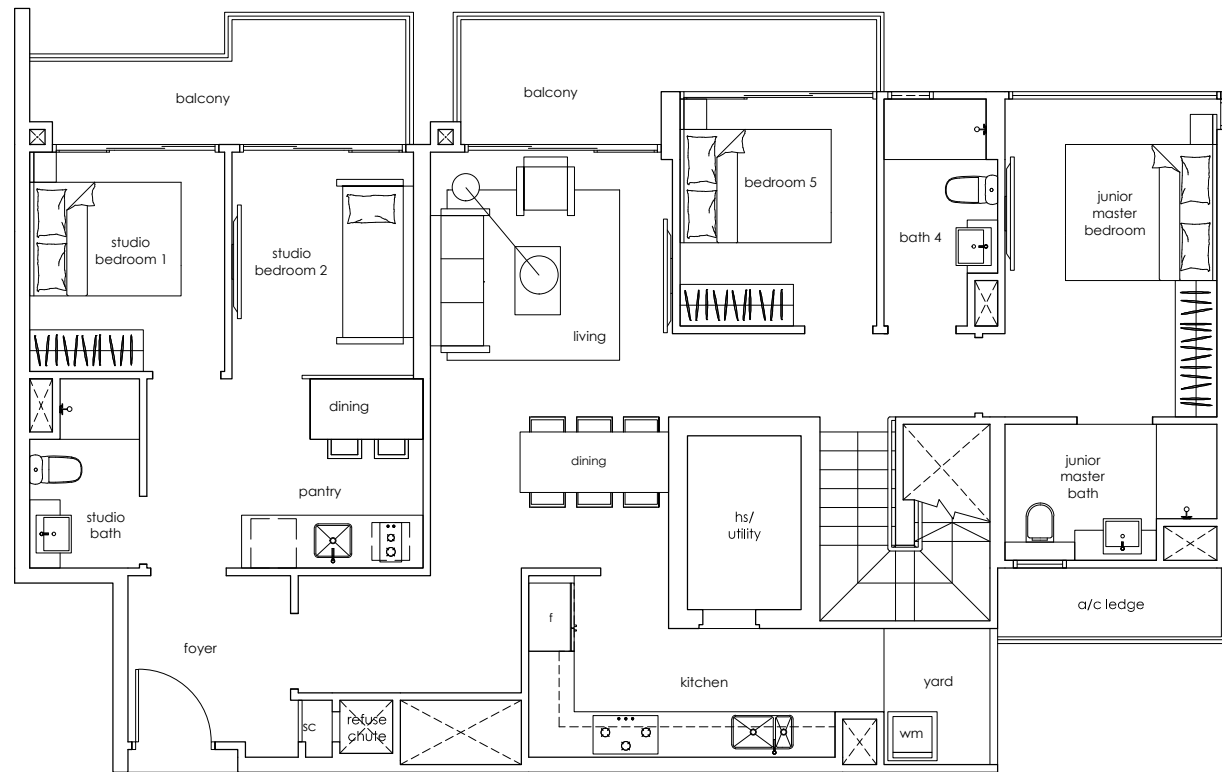


5 bedroom dual key

4

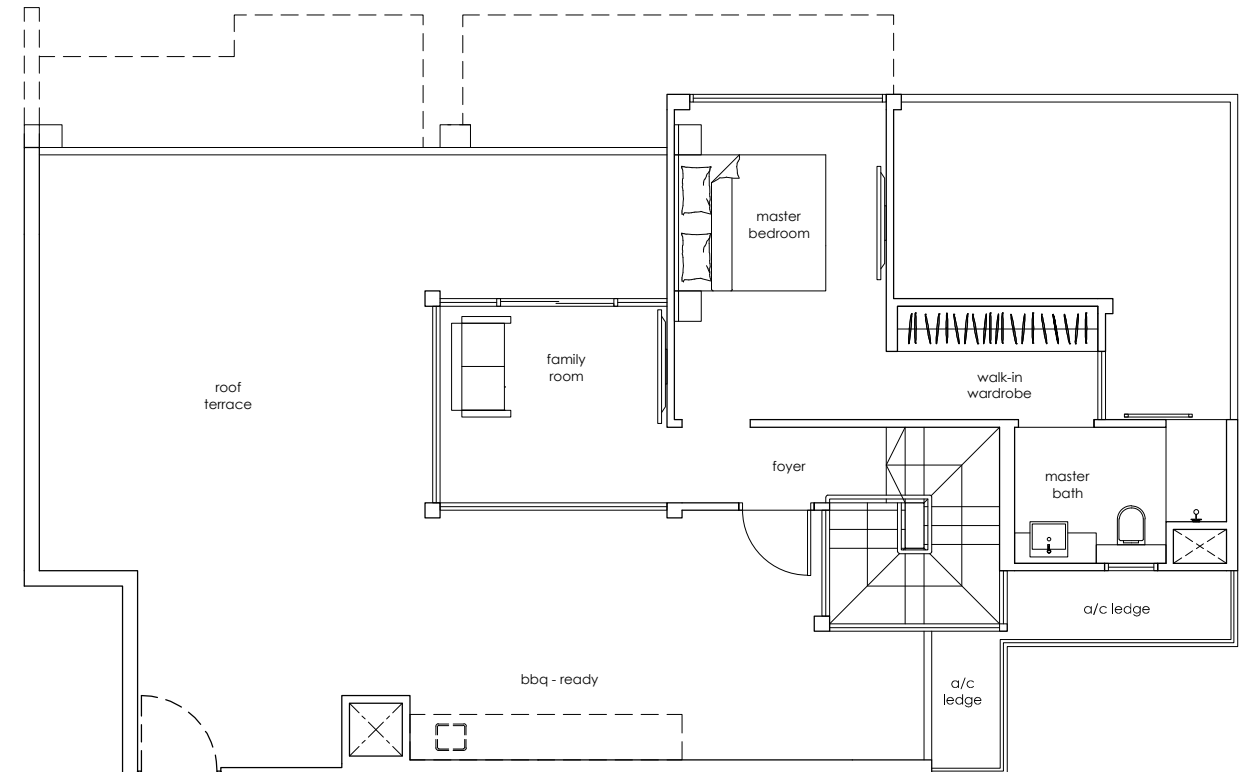
3

2



lower level

Area includes A/C ledge, balcony, PES, open terrace and void (where applicable). The plans are subject to change as may be required or approved by the relevant authorities. These are not drawn to scale and are for purpose of a visual representation of the different layouts that are available. All areas are approximate and subject to final survey. The developer and its agents cannot be held liable for any inaccuracies.



upper level

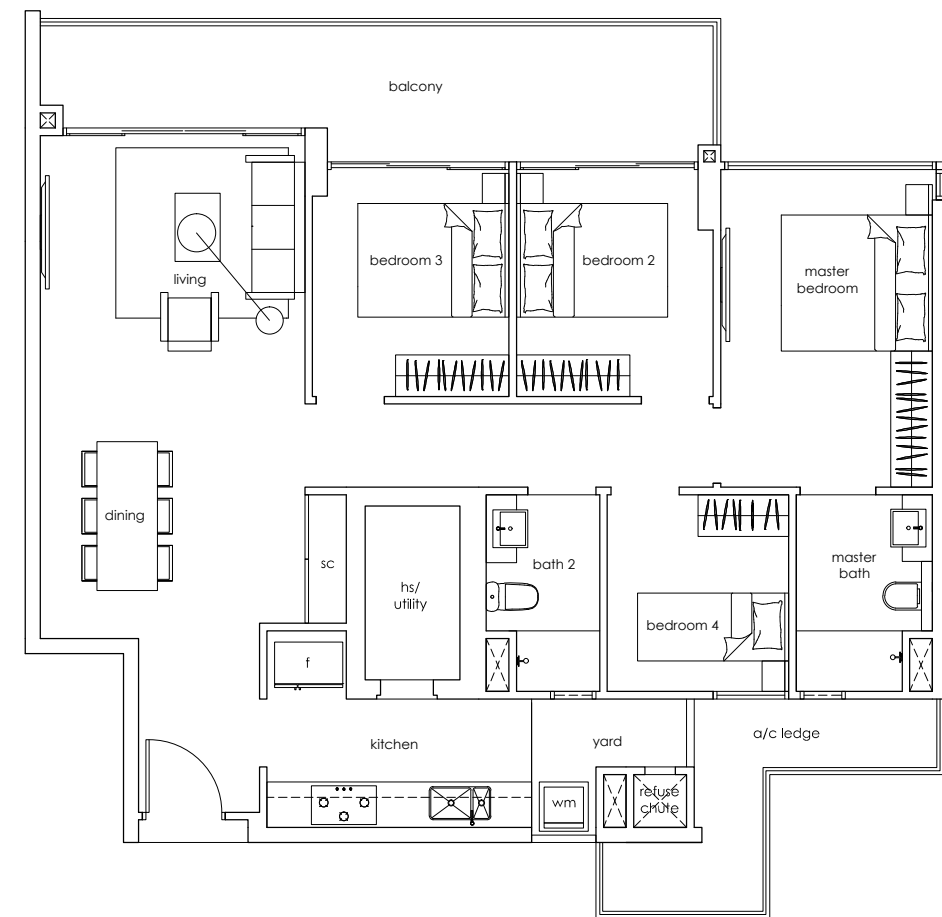
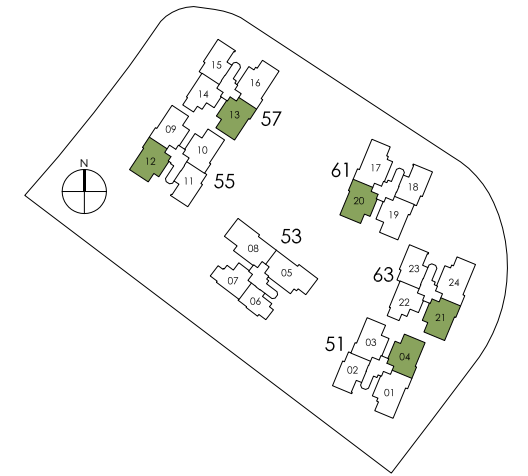
Area includes A/C ledge, balcony, PES, open terrace and void (where applicable). The plans are subject to change as may be required or approved by the relevant authorities. These are not drawn to scale and are for purpose of a visual representation of the different layouts that are available. All areas are approximate and subject to final survey. The developer and its agents cannot be held liable for any inaccuracies.



image by Muji

4 bedroom

- standard C1
- 119 sqm / 1,281 sqft
- #02 to #16-04 (mirrored units)
- #03 to #15-12 (mirrored units)
- #02 to #15-13
- #02 to #17-20 (mirrored units)
- #02 to #16-21

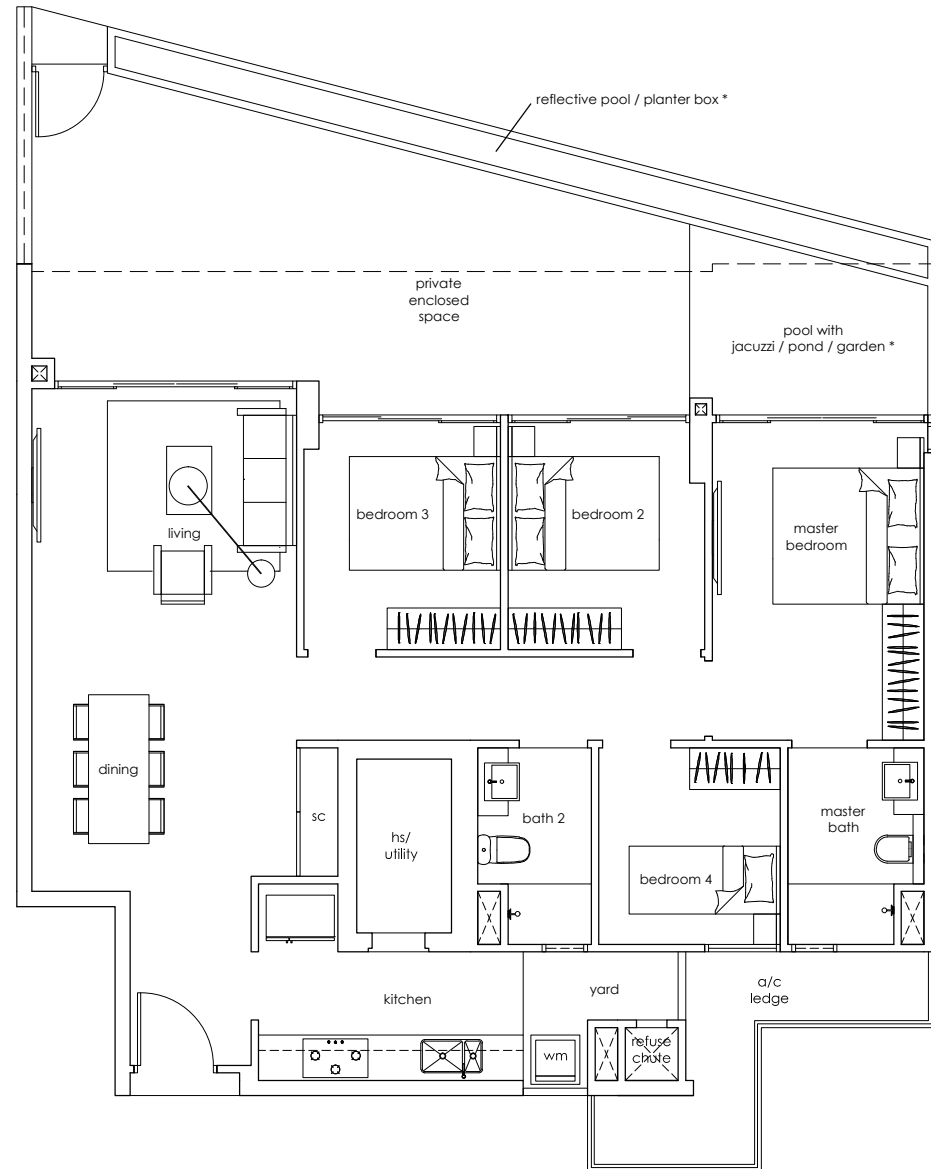
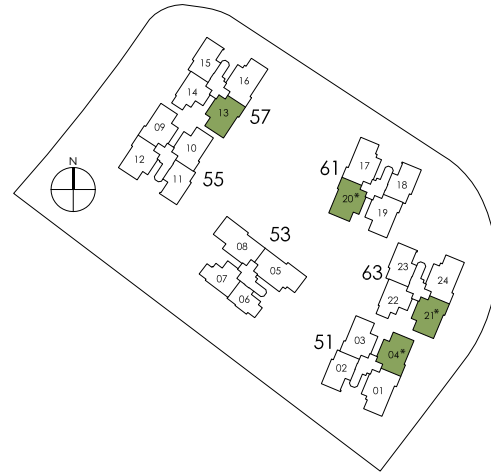


Area includes A/C ledge, balcony, PES, open terrace and void (where applicable). The plans are subject to change as may be required or approved by the relevant authorities. These are not drawn to scale and are for purpose of a visual representation of the different layouts that are available. All areas are approximate and subject to final survey. The developer and its agents cannot be held liable for any inaccuracies.

4 bedroom

standard C1-p1
 148 sqm / 1,593 sqft
 pool with jacuzzi / pond / garden *
 #01-04 (mirrored unit)
 #01-20 (mirrored unit)
 #01-21

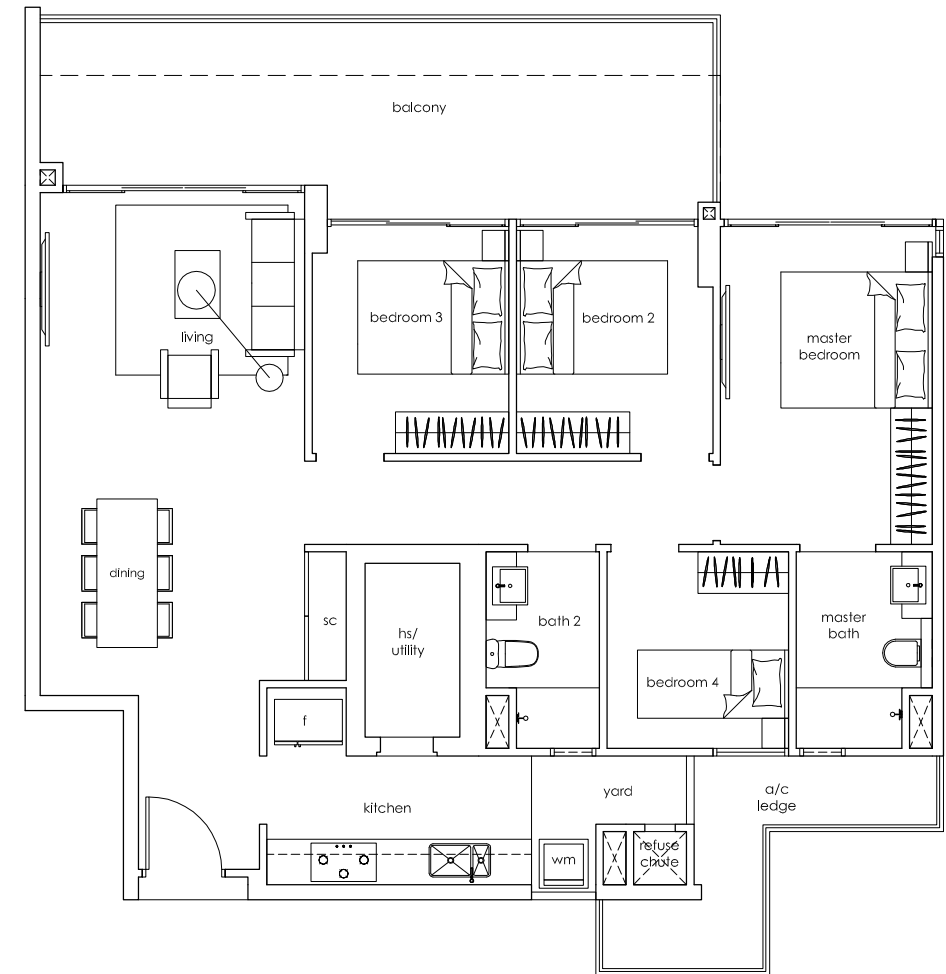
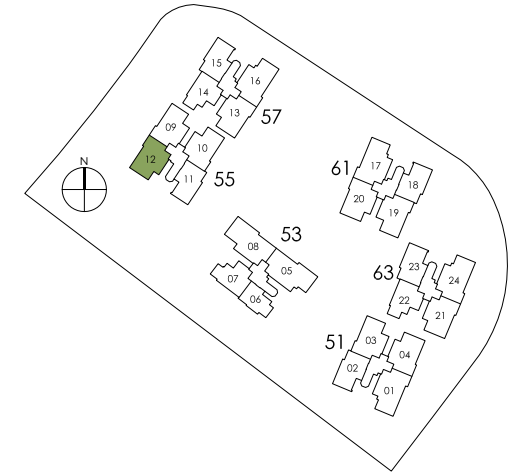
standard C1-p2
 148 sqm / 1,593 sqft
 #01-13



Area includes A/C ledge, balcony, PES, open terrace and void (where applicable). The plans are subject to change as may be required or approved by the relevant authorities. These are not drawn to scale and are for purpose of a visual representation of the different layouts that are available. All areas are approximate and subject to final survey. The developer and its agents cannot be held liable for any inaccuracies.

4 bedroom

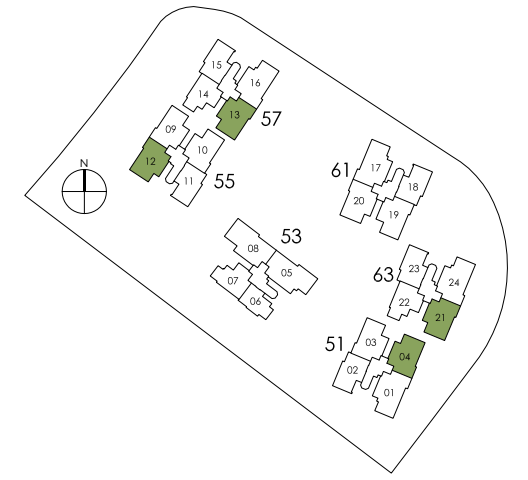
standard C1-a
 126 sqm / 1,356 sqft
 #02-12 (mirrored unit)



Area includes A/C ledge, balcony, PES, open terrace and void (where applicable). The plans are subject to change as may be required or approved by the relevant authorities. These are not drawn to scale and are for purpose of a visual representation of the different layouts that are available. All areas are approximate and subject to final survey. The developer and its agents cannot be held liable for any inaccuracies.

4+1 bedroom penthouse

standard PH4
 223 sqm / 2,400 sqft
 #17-04 (mirrored unit)
 #16-12 (mirrored unit)
 #16-13
 #17-21

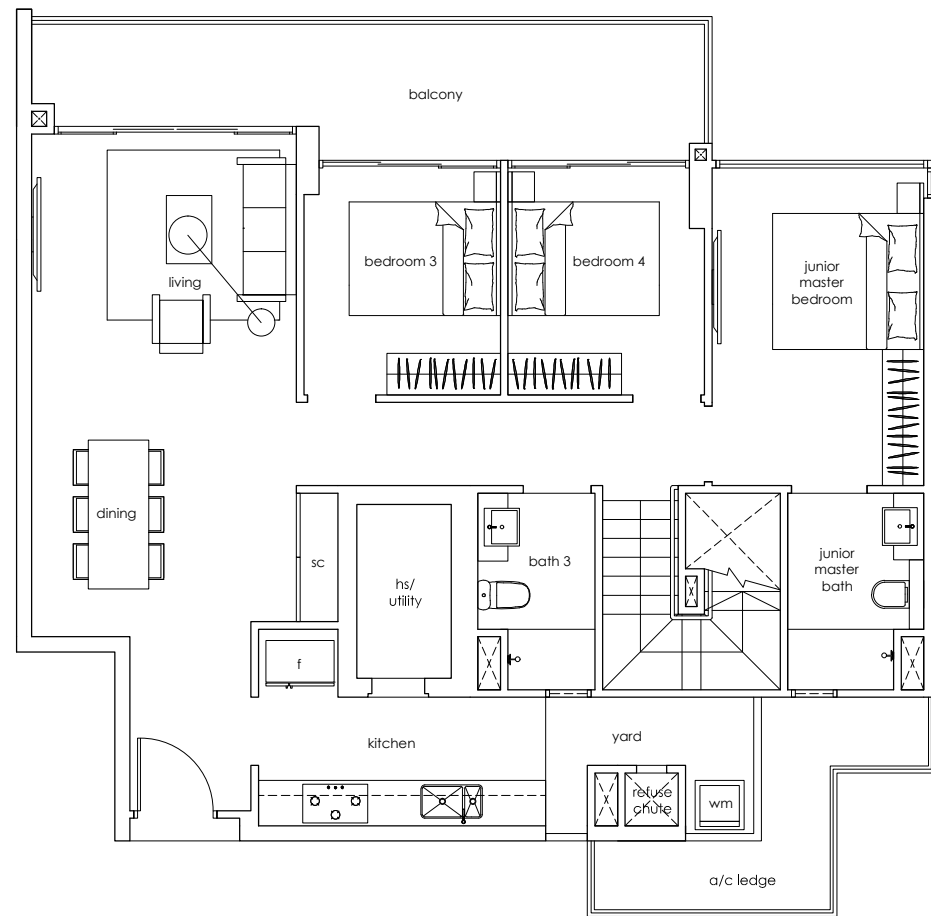


4 bedroom standard

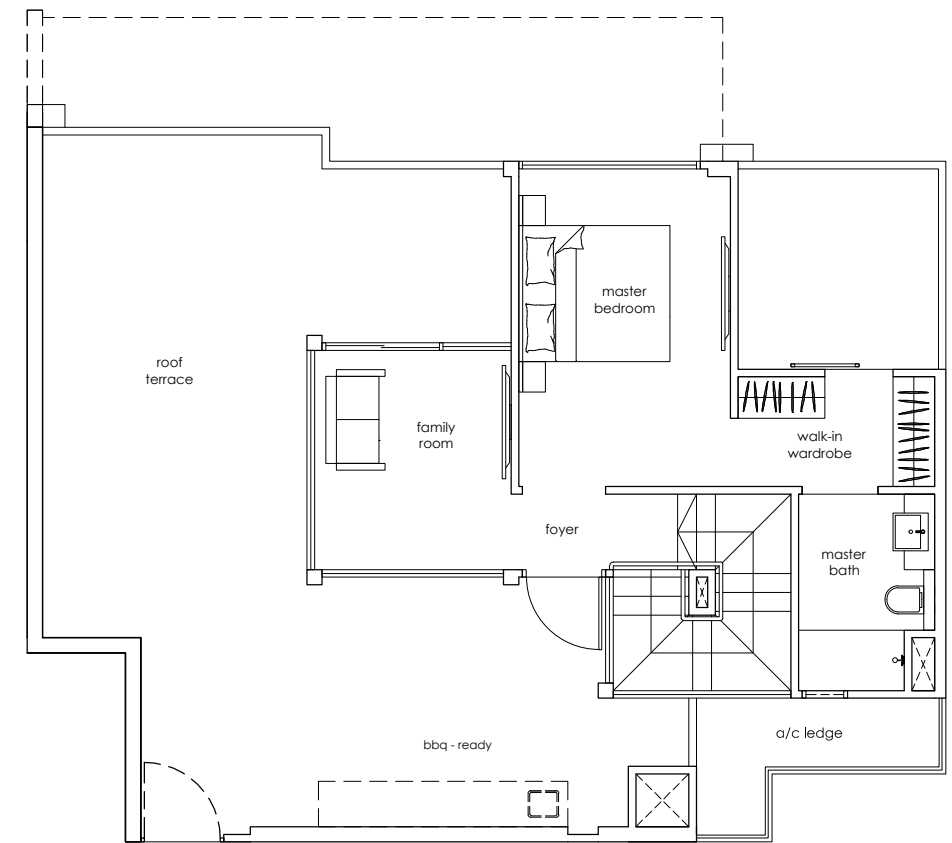
3

2

5



lower level



upper level

Area includes A/C ledge, balcony, PES, open terrace and void (where applicable). The plans are subject to change as may be required or approved by the relevant authorities. These are not drawn to scale and are for purpose of a visual representation of the different layouts that are available. All areas are approximate and subject to final survey. The developer and its agents cannot be held liable for any inaccuracies.

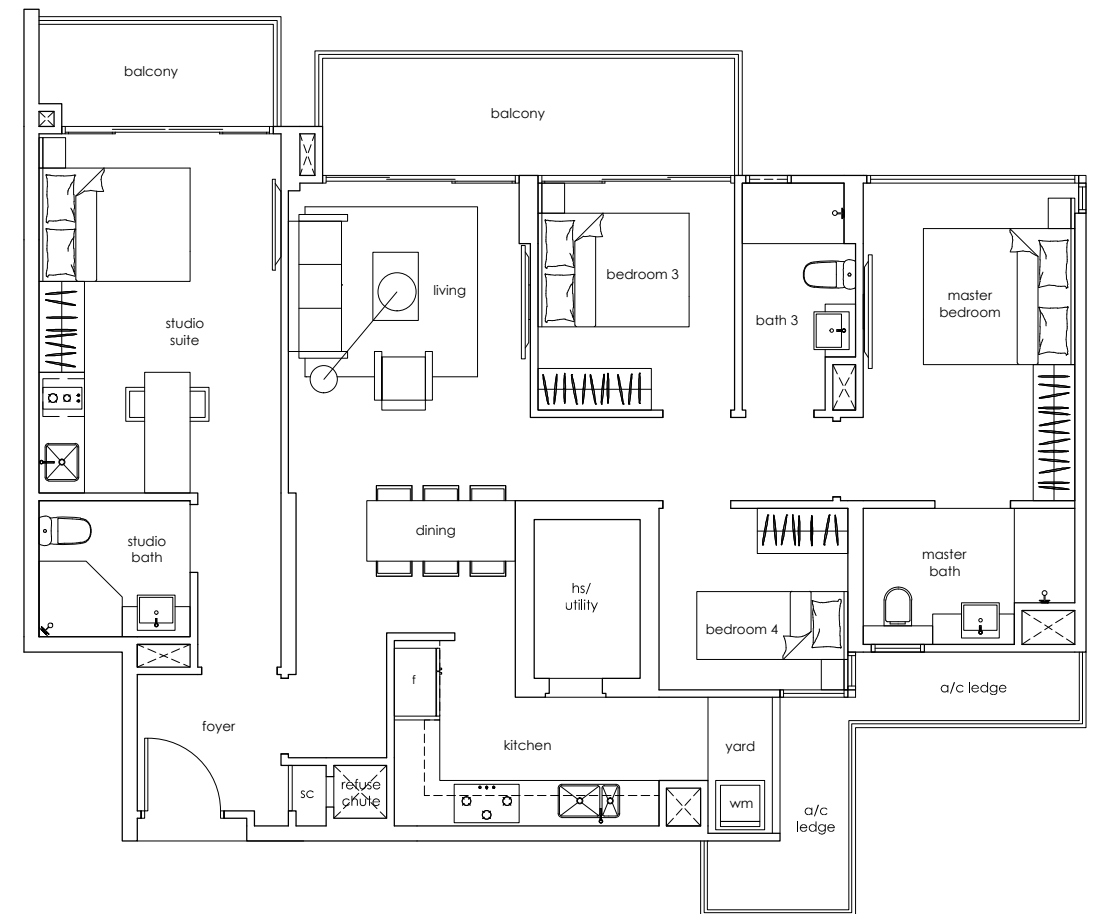
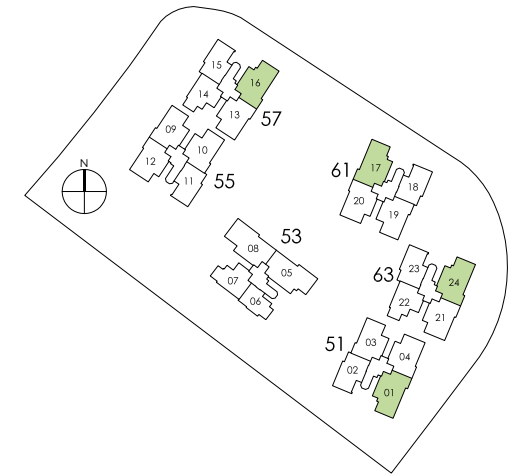
Area includes A/C ledge, balcony, PES, open terrace and void (where applicable). The plans are subject to change as may be required or approved by the relevant authorities. These are not drawn to scale and are for purpose of a visual representation of the different layouts that are available. All areas are approximate and subject to final survey. The developer and its agents cannot be held liable for any inaccuracies.



image by Muji

4 bedroom (dual key)

dual key C2
 129 sqm / 1,389 sqft
 #02 to #16-01
 #02 to #15-16 (mirrored units)
 #02 to #16-17
 #02 to #16-24 (mirrored units)



Area includes A/C ledge, balcony, PES, open terrace and void (where applicable). The plans are subject to change as may be required or approved by the relevant authorities. These are not drawn to scale and are for purpose of a visual representation of the different layouts that are available. All areas are approximate and subject to final survey. The developer and its agents cannot be held liable for any inaccuracies.

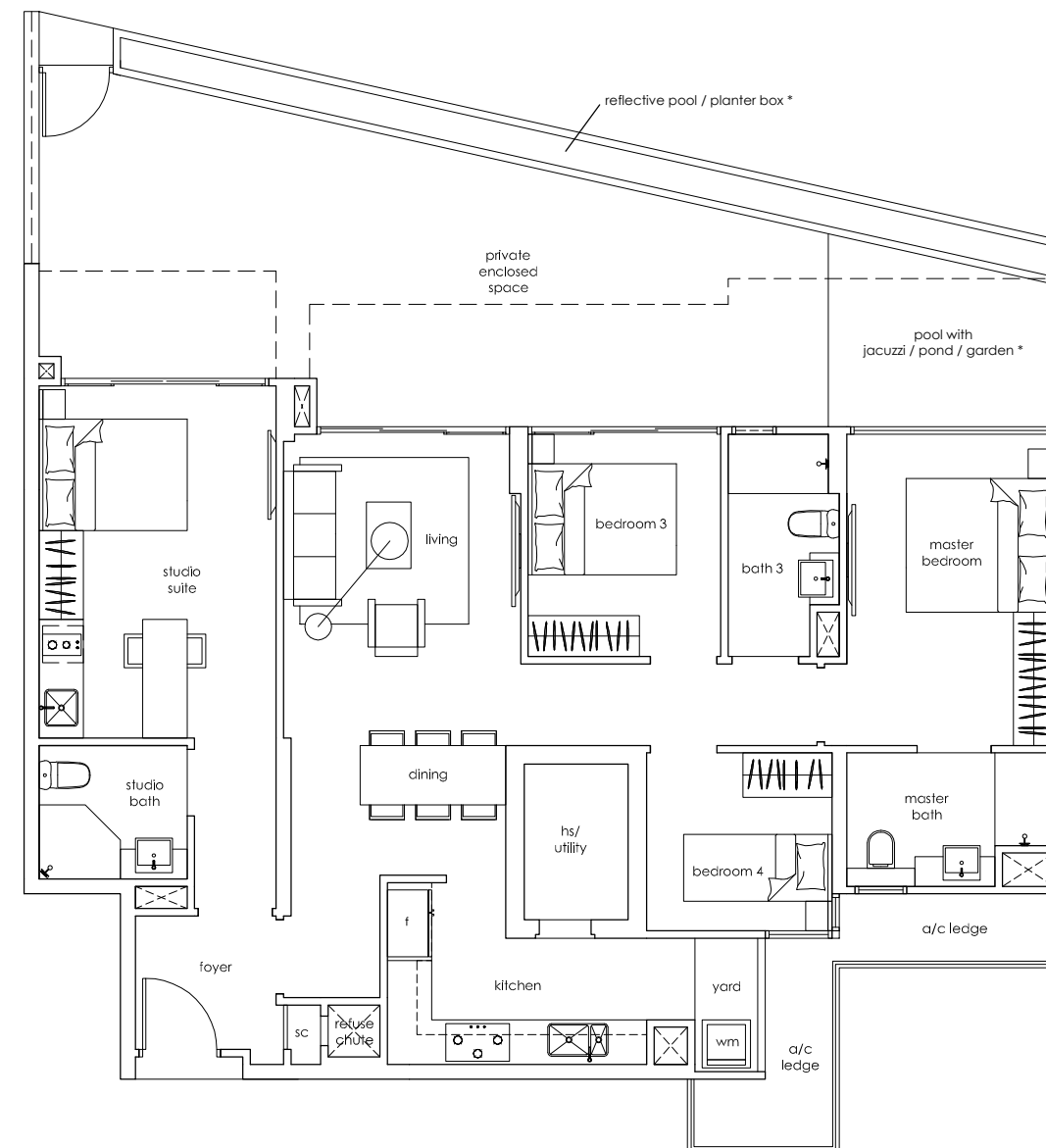
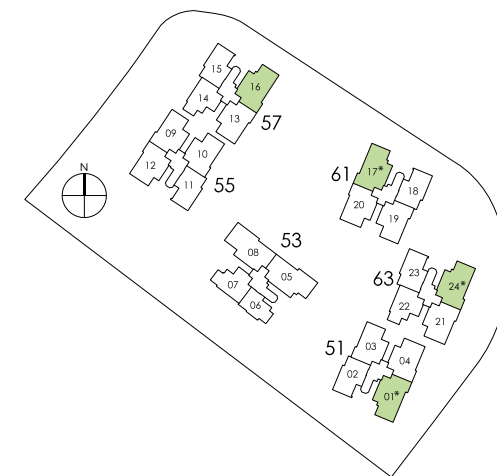


image by Mujj

4 bedroom (dual key)

dual key C2-p1
 169 sqm / 1,819 sqft
 pool with jacuzzi / pond / garden *
 #01-01
 #01-17
 #01-24 (mirrored unit)

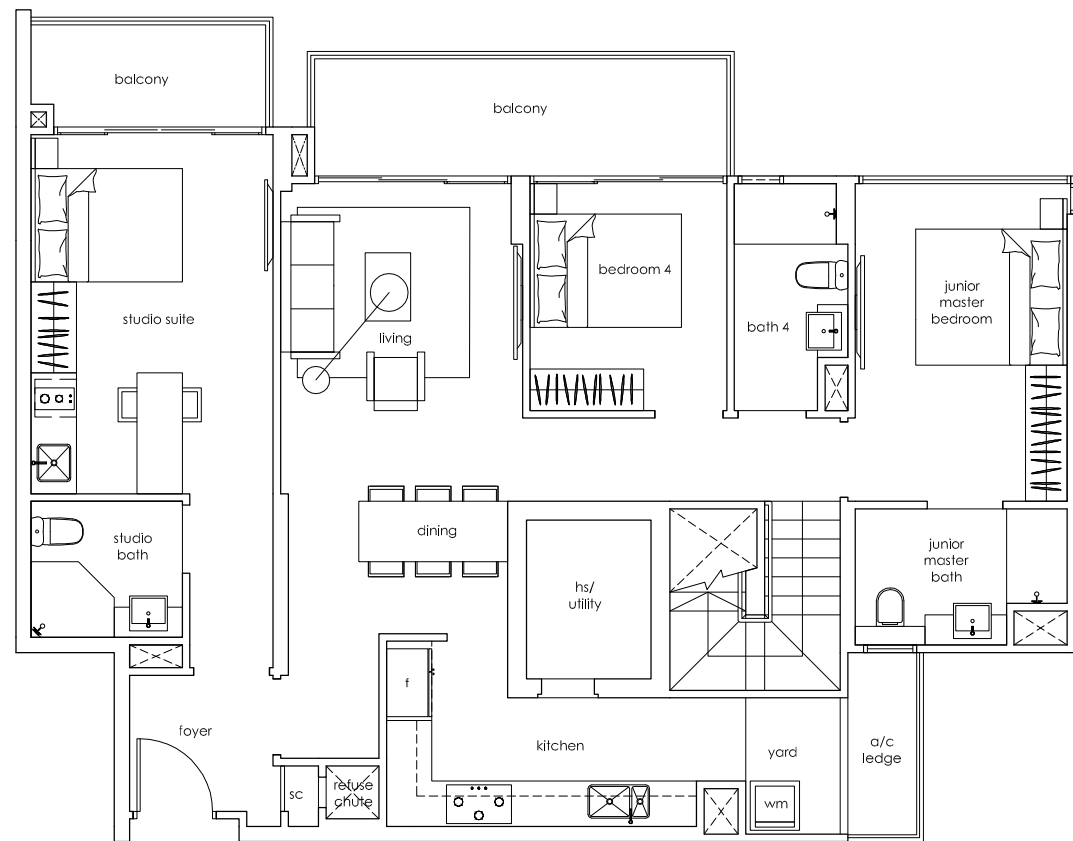
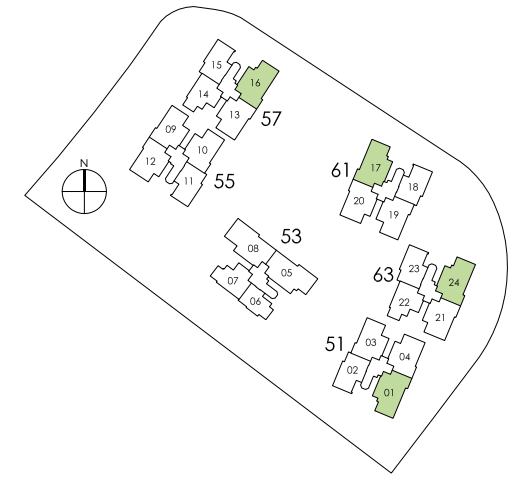
dual key C2-p2
 169 sqm / 1,819 sqft
 #01-16 (mirrored unit)



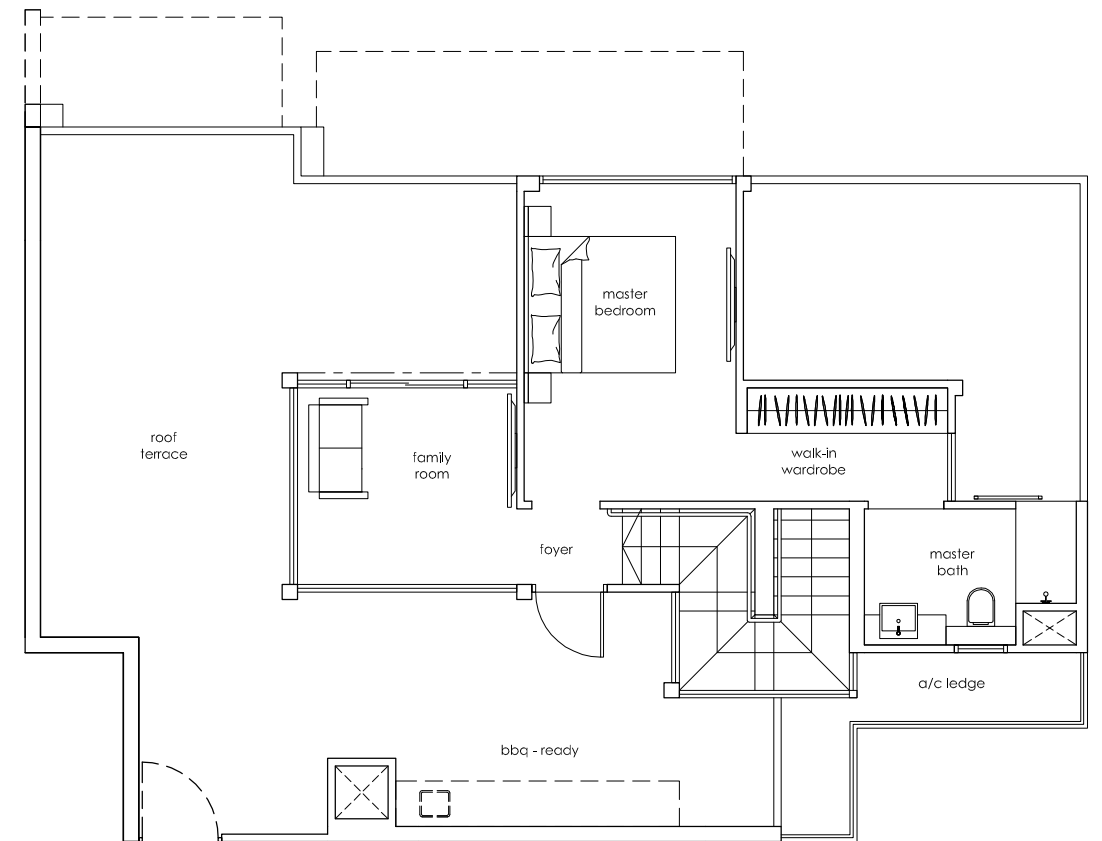
Area includes A/C ledge, balcony, PES, open terrace and void (where applicable). The plans are subject to change as may be required or approved by the relevant authorities. These are not drawn to scale and are for purpose of a visual representation of the different layouts that are available. All areas are approximate and subject to final survey. The developer and its agents cannot be held liable for any inaccuracies.

4+1 bedroom (dual key) penthouse

dual key PH5
 240 sqm / 2,583 sqft
 #17-01
 #16-16 (mirrored unit)
 #17-17
 #17-24 (mirrored unit)



lower level



upper level

Area includes A/C ledge, balcony, PES, open terrace and void (where applicable). The plans are subject to change as may be required or approved by the relevant authorities. These are not drawn to scale and are for purpose of a visual representation of the different layouts that are available. All areas are approximate and subject to final survey. The developer and its agents cannot be held liable for any inaccuracies.

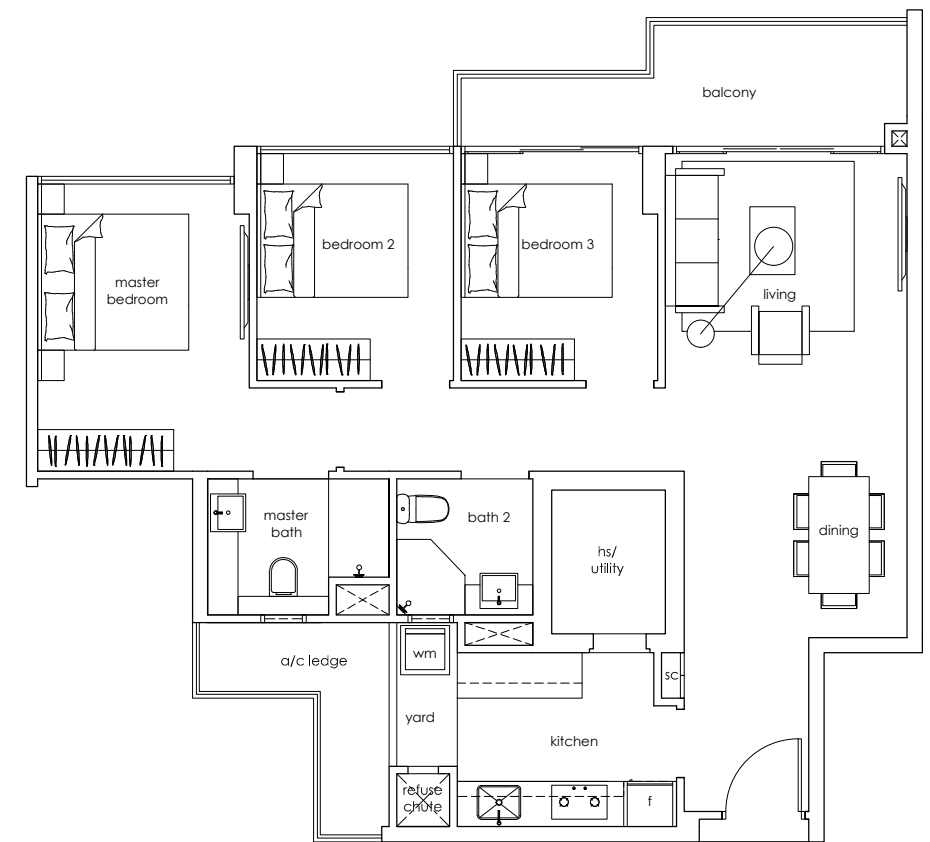
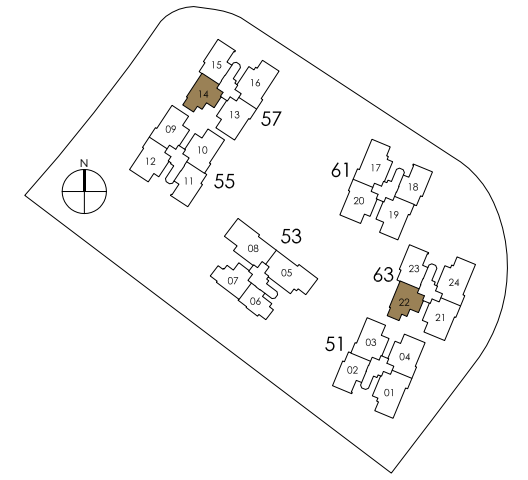
Area includes A/C ledge, balcony, PES, open terrace and void (where applicable). The plans are subject to change as may be required or approved by the relevant authorities. These are not drawn to scale and are for purpose of a visual representation of the different layouts that are available. All areas are approximate and subject to final survey. The developer and its agents cannot be held liable for any inaccuracies.



image by Muji

3 bedroom

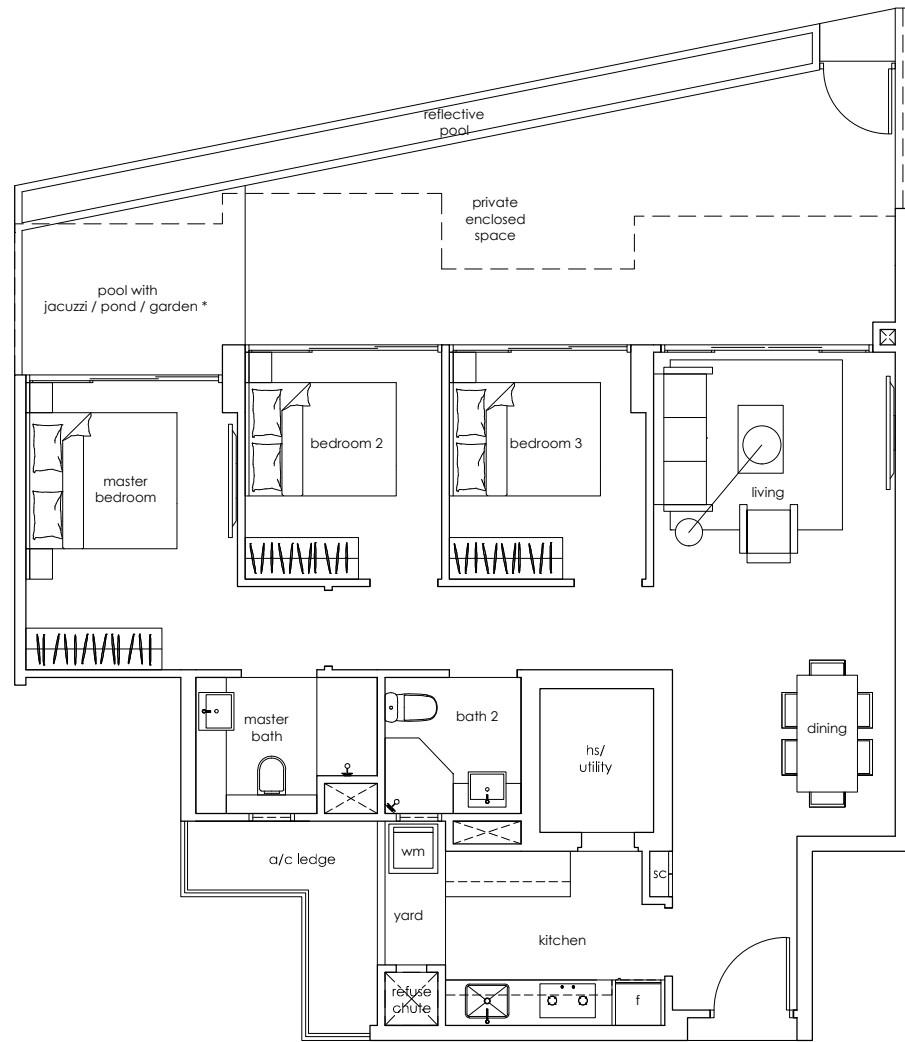
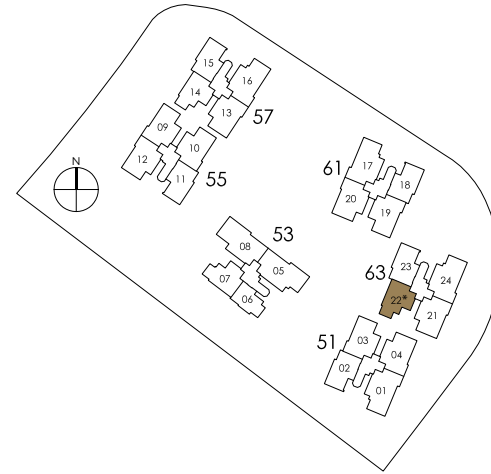
standard B1
 95 sqm / 1,023 sqft
 #03 to #16-14
 #02 to #17-22



Area includes A/C ledge, balcony, PES, open terrace and void (where applicable). The plans are subject to change as may be required or approved by the relevant authorities. These are not drawn to scale and are for purpose of a visual representation of the different layouts that are available. All areas are approximate and subject to final survey. The developer and its agents cannot be held liable for any inaccuracies.

3 bedroom

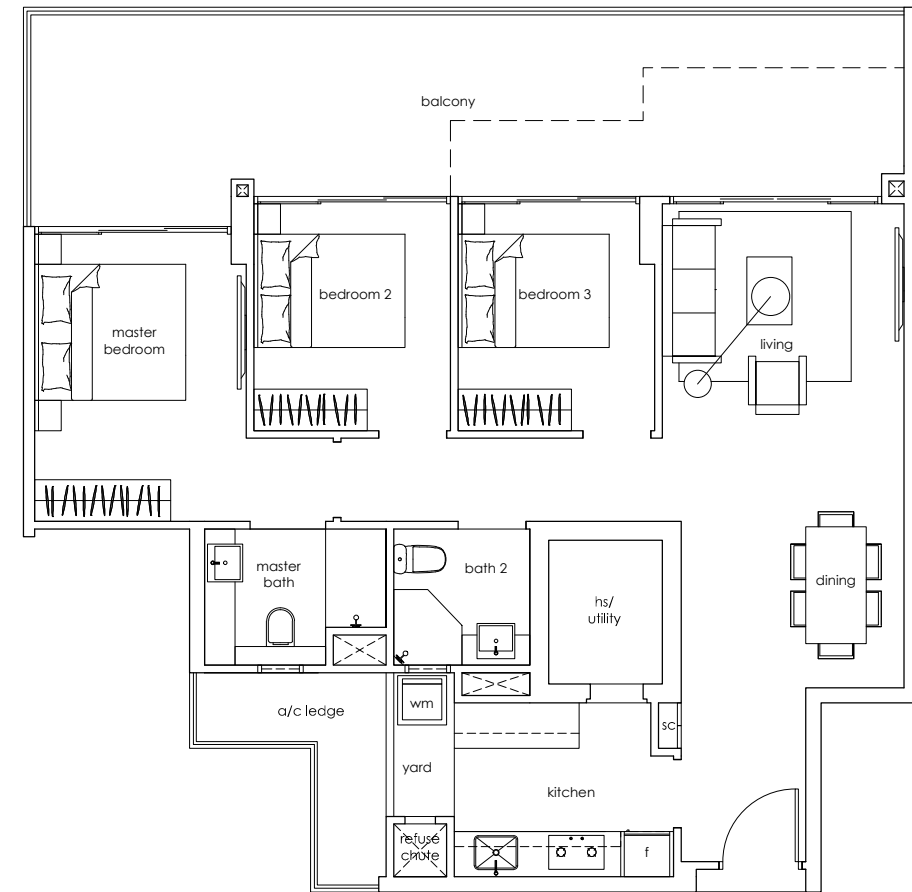
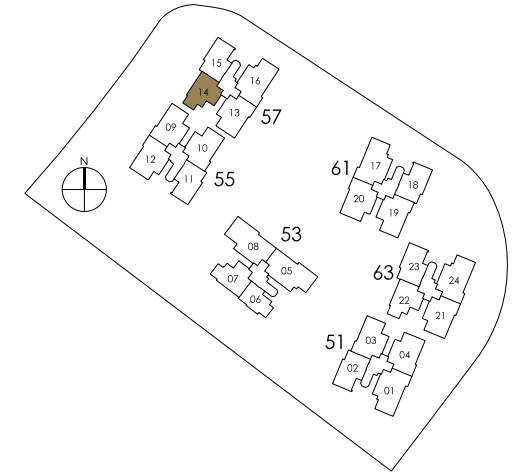
standard B1-p1
 126 sqm / 1,356 sqft
 pool with jacuzzi / pond / garden *
 #01-22



Area includes A/C ledge, balcony, PES, open terrace and void (where applicable). The plans are subject to change as may be required or approved by the relevant authorities. These are not drawn to scale and are for purpose of a visual representation of the different layouts that are available. All areas are approximate and subject to final survey. The developer and its agents cannot be held liable for any inaccuracies.

3 bedroom

standard B1a
 117 sqm / 1,259 sqft
 #02-14



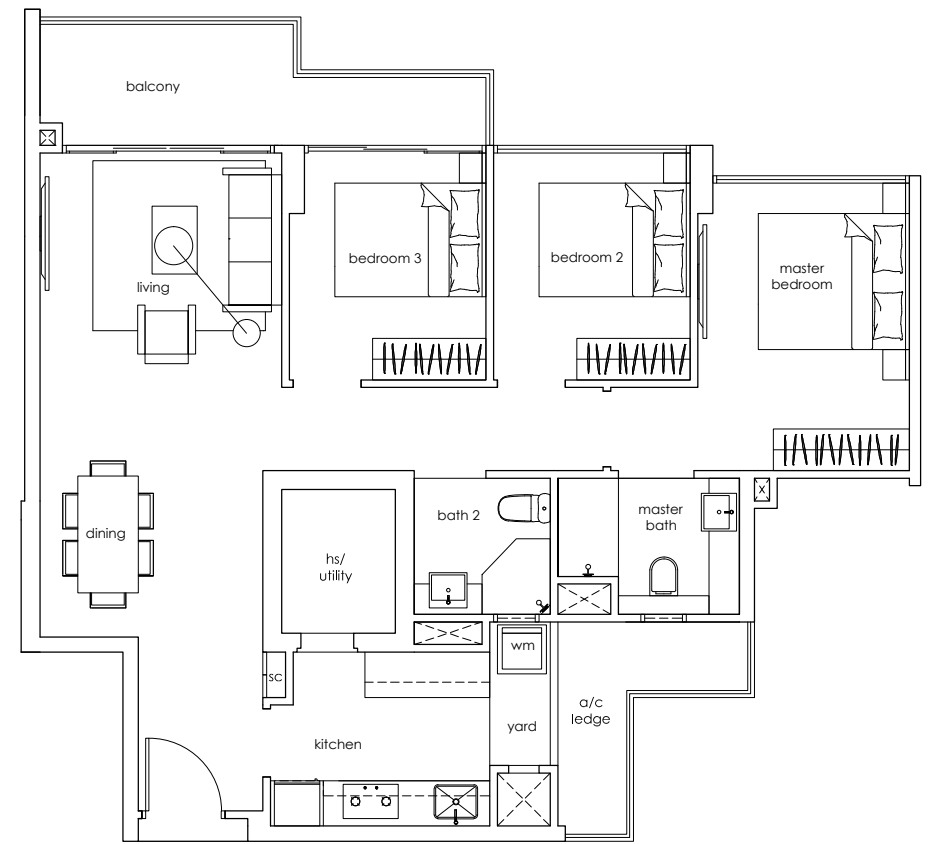
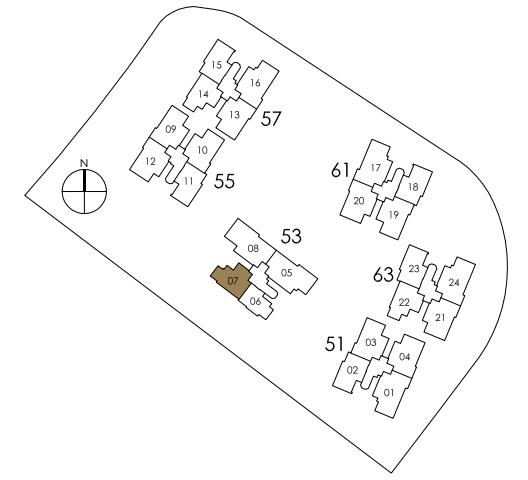
Area includes A/C ledge, balcony, PES, open terrace and void (where applicable). The plans are subject to change as may be required or approved by the relevant authorities. These are not drawn to scale and are for purpose of a visual representation of the different layouts that are available. All areas are approximate and subject to final survey. The developer and its agents cannot be held liable for any inaccuracies.



image by Muji

3 bedroom

standard B2
 95 sqm / 1,023 sqft
 #03 to #16-07



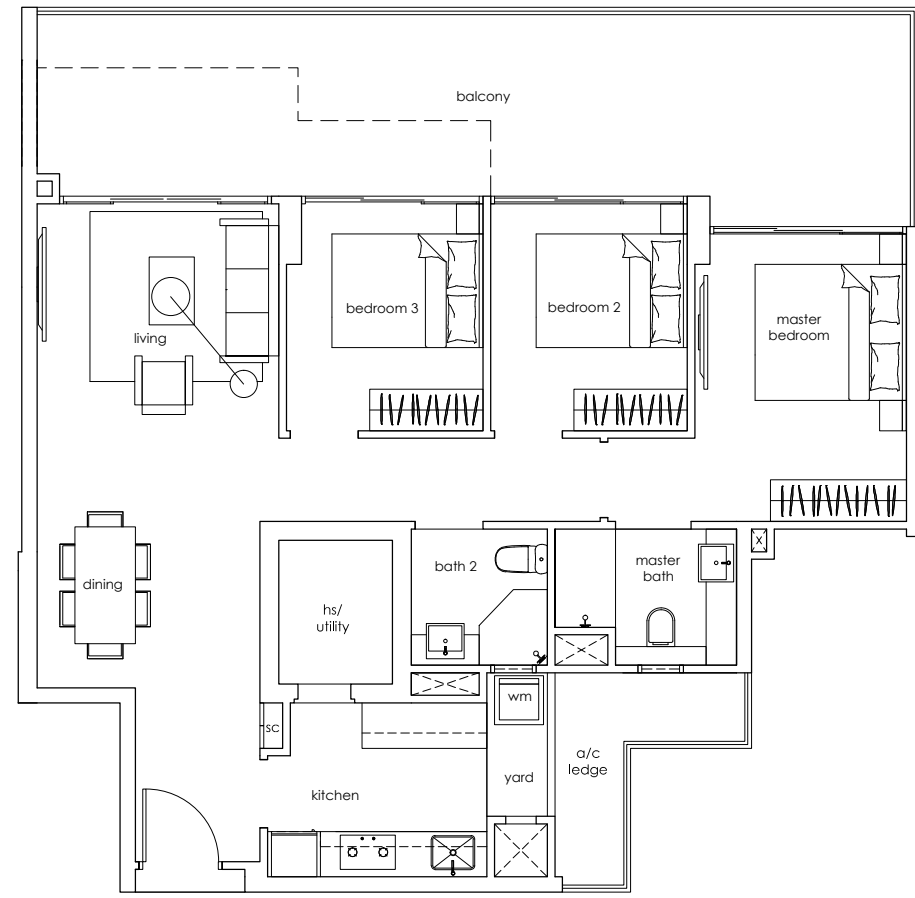
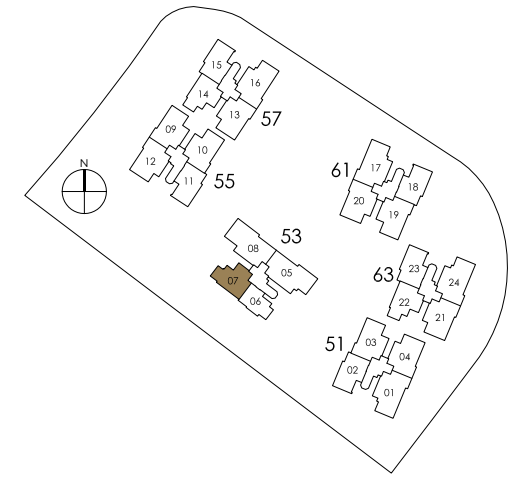
Area includes A/C ledge, balcony, PES, open terrace and void (where applicable). The plans are subject to change as may be required or approved by the relevant authorities. These are not drawn to scale and are for purpose of a visual representation of the different layouts that are available. All areas are approximate and subject to final survey. The developer and its agents cannot be held liable for any inaccuracies.



image by Muji

3 bedroom

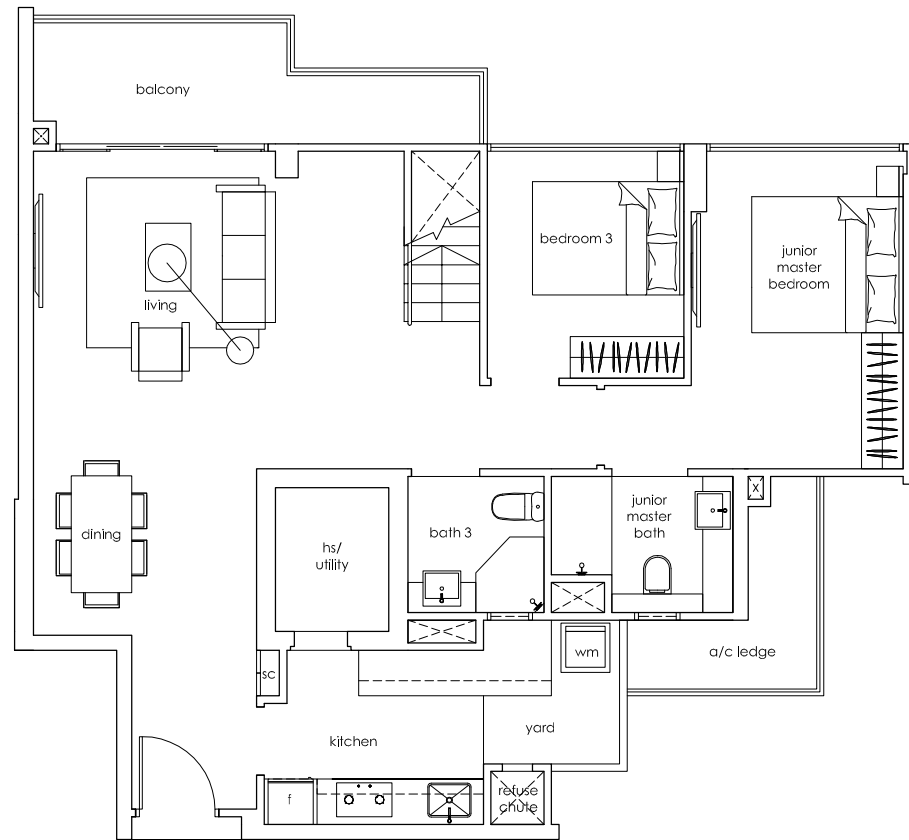
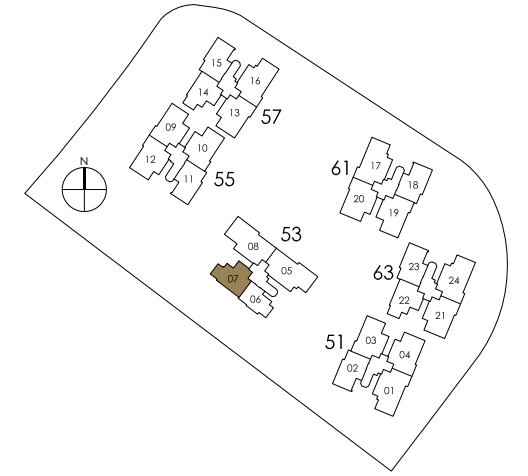
standard B2a
 117 sqm / 1,259 sqft
 #02-07



Area includes A/C ledge, balcony, PES, open terrace and void (where applicable). The plans are subject to change as may be required or approved by the relevant authorities. These are not drawn to scale and are for purpose of a visual representation of the different layouts that are available. All areas are approximate and subject to final survey. The developer and its agents cannot be held liable for any inaccuracies.

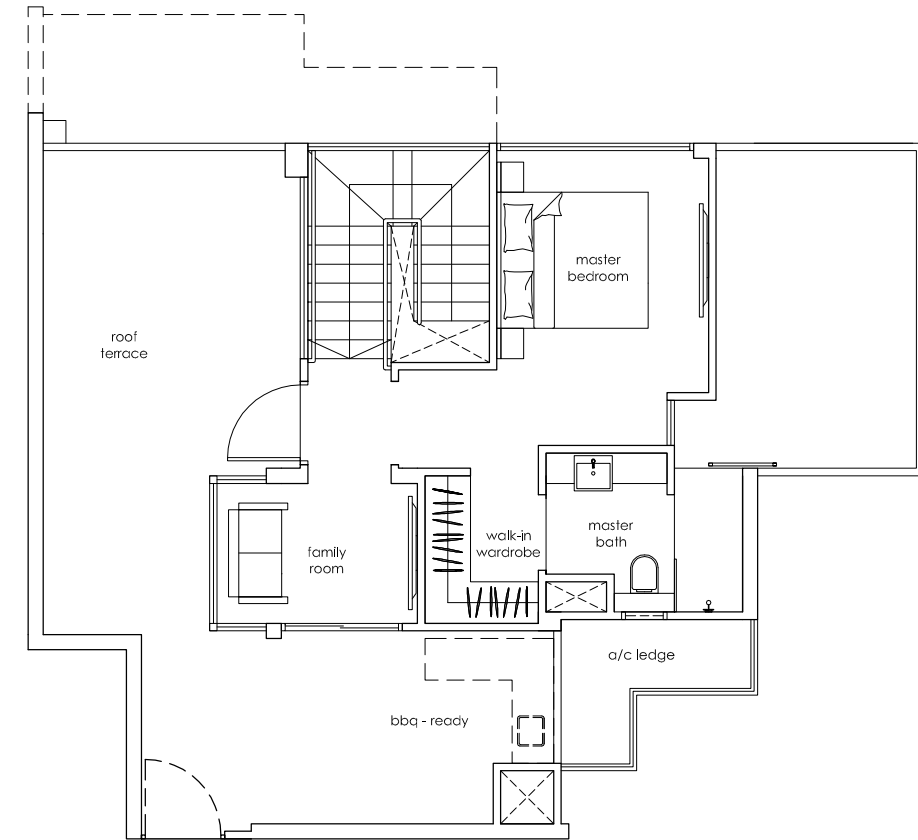
3+1 bedroom penthouse

standard PH1
185 sqm / 1,991 sqft
#17-07



lower level

Area includes A/C ledge, balcony, PES, open terrace and void (where applicable). The plans are subject to change as may be required or approved by the relevant authorities. These are not drawn to scale and are for purpose of a visual representation of the different layouts that are available. All areas are approximate and subject to final survey. The developer and its agents cannot be held liable for any inaccuracies.



upper level

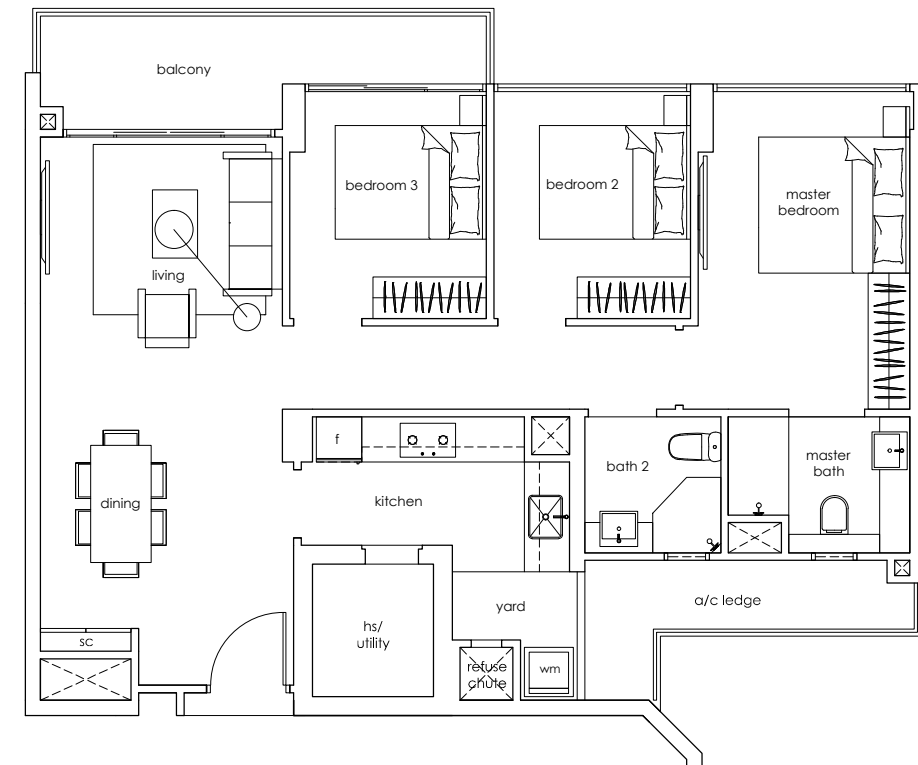
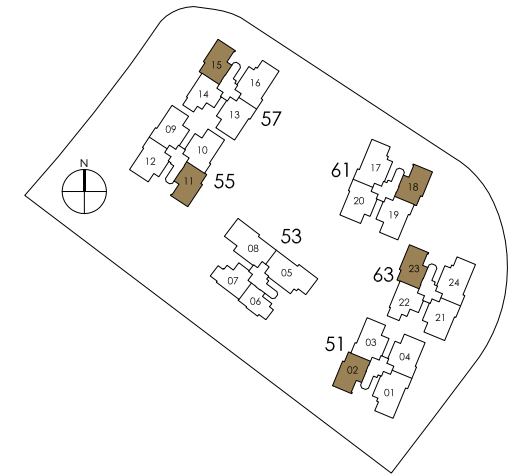
Area includes A/C ledge, balcony, PES, open terrace and void (where applicable). The plans are subject to change as may be required or approved by the relevant authorities. These are not drawn to scale and are for purpose of a visual representation of the different layouts that are available. All areas are approximate and subject to final survey. The developer and its agents cannot be held liable for any inaccuracies.



image by Muji

3 bedroom

standard B3
 96 sqm / 1,033 sqft
 #02 to #17-02 (mirrored units)
 #02 to #16-11
 #03 to #15-15
 #02 to #16-18 (mirrored units)
 #02 to #16-23

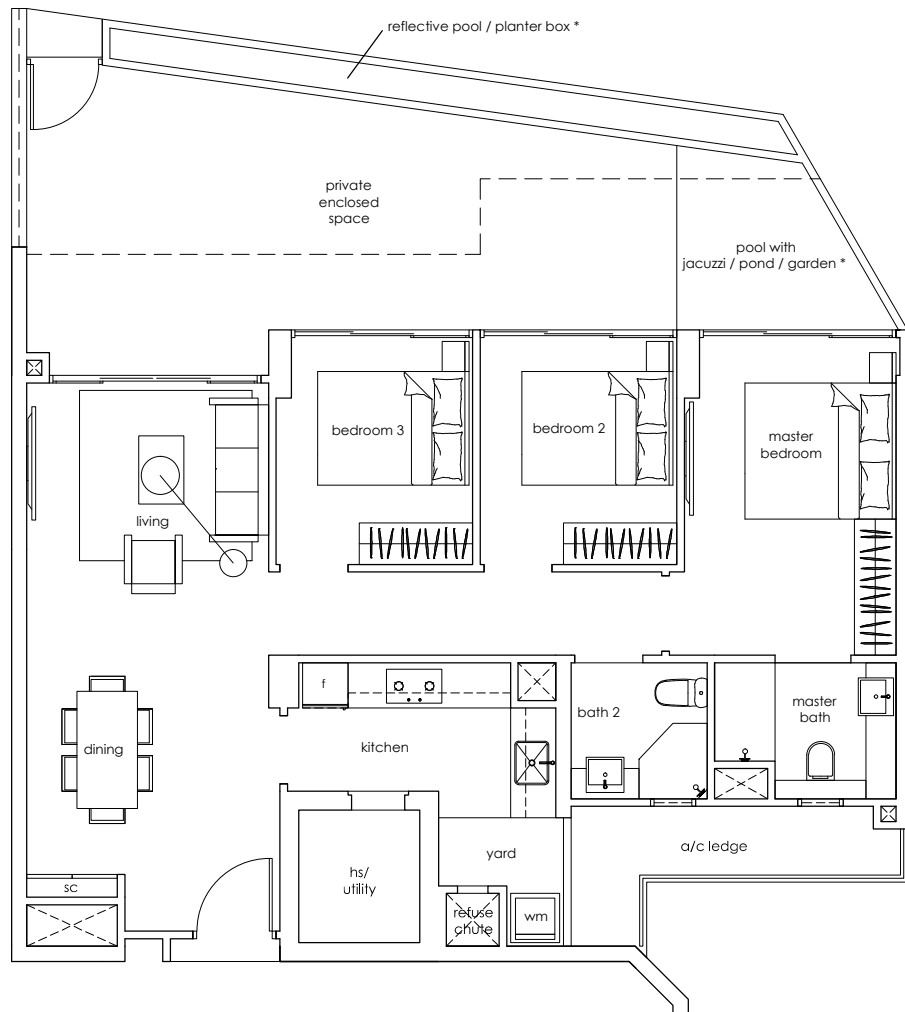
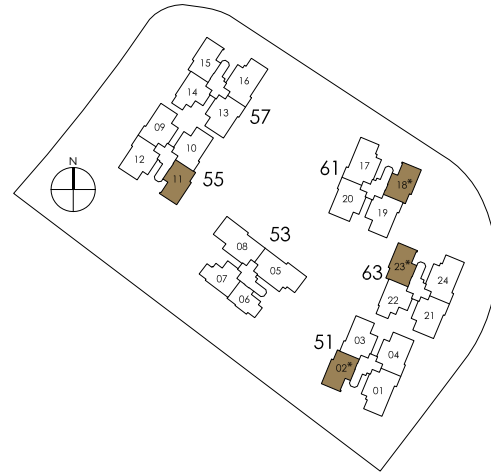


Area includes A/C ledge, balcony, PES, open terrace and void (where applicable). The plans are subject to change as may be required or approved by the relevant authorities. These are not drawn to scale and are for purpose of a visual representation of the different layouts that are available. All areas are approximate and subject to final survey. The developer and its agents cannot be held liable for any inaccuracies.

3 bedroom

standard B3-p1
 128 sqm / 1,378 sqft
 pool with jacuzzi / pond / garden *
 #01-02 (mirrored unit)
 #01-18 (mirrored unit)
 #01-23

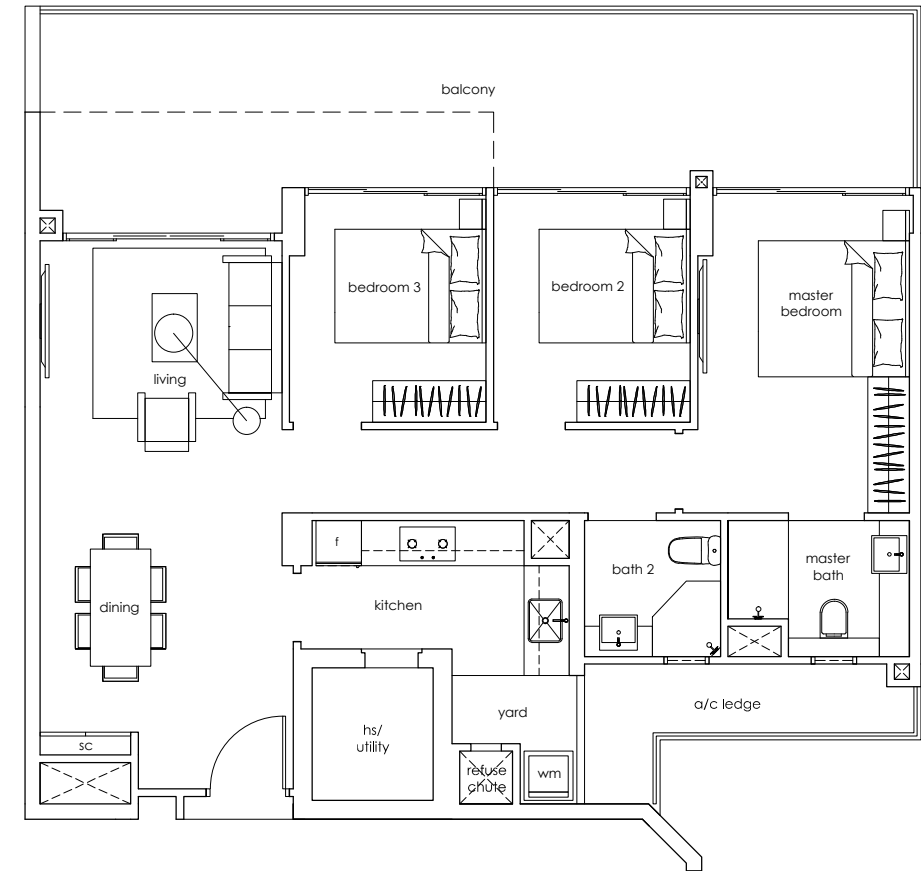
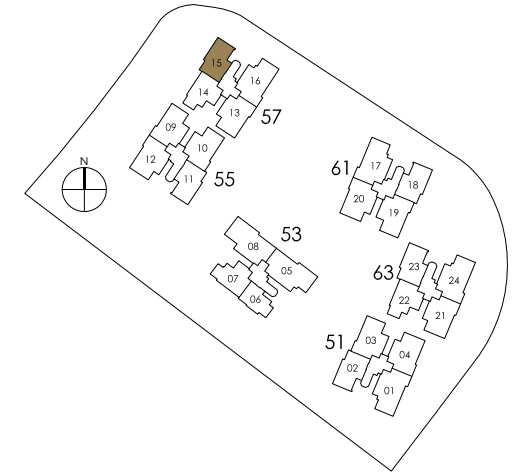
standard B3-p2
 128 sqm / 1,378 sqft
 #01-11



Area includes A/C ledge, balcony, PES, open terrace and void (where applicable). The plans are subject to change as may be required or approved by the relevant authorities. These are not drawn to scale and are for purpose of a visual representation of the different layouts that are available. All areas are approximate and subject to final survey. The developer and its agents cannot be held liable for any inaccuracies.

3 bedroom

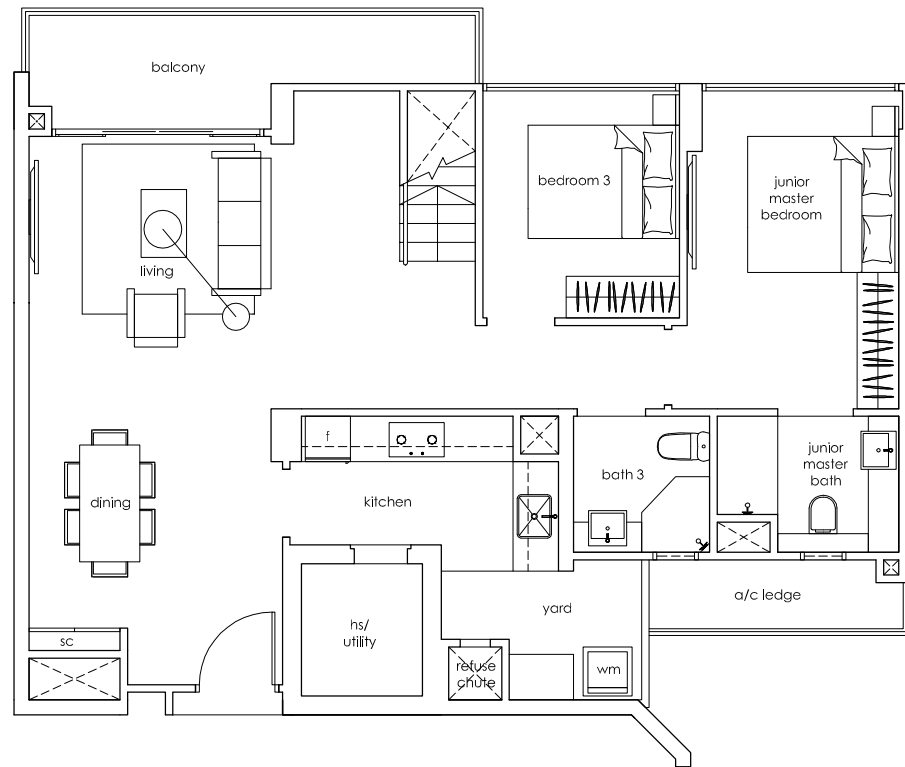
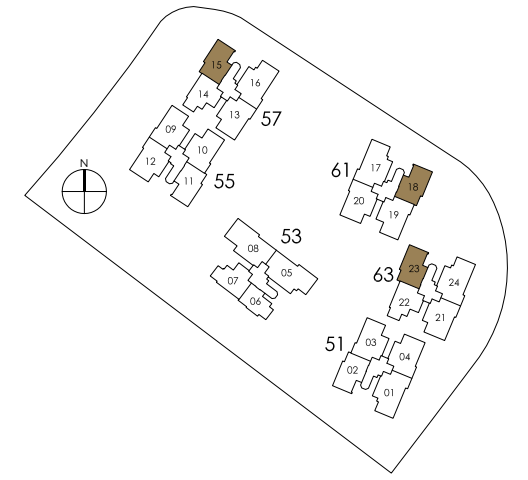
standard B3a
 118 sqm / 1,270 sqft
 #02-15



Area includes A/C ledge, balcony, PES, open terrace and void (where applicable). The plans are subject to change as may be required or approved by the relevant authorities. These are not drawn to scale and are for purpose of a visual representation of the different layouts that are available. All areas are approximate and subject to final survey. The developer and its agents cannot be held liable for any inaccuracies.

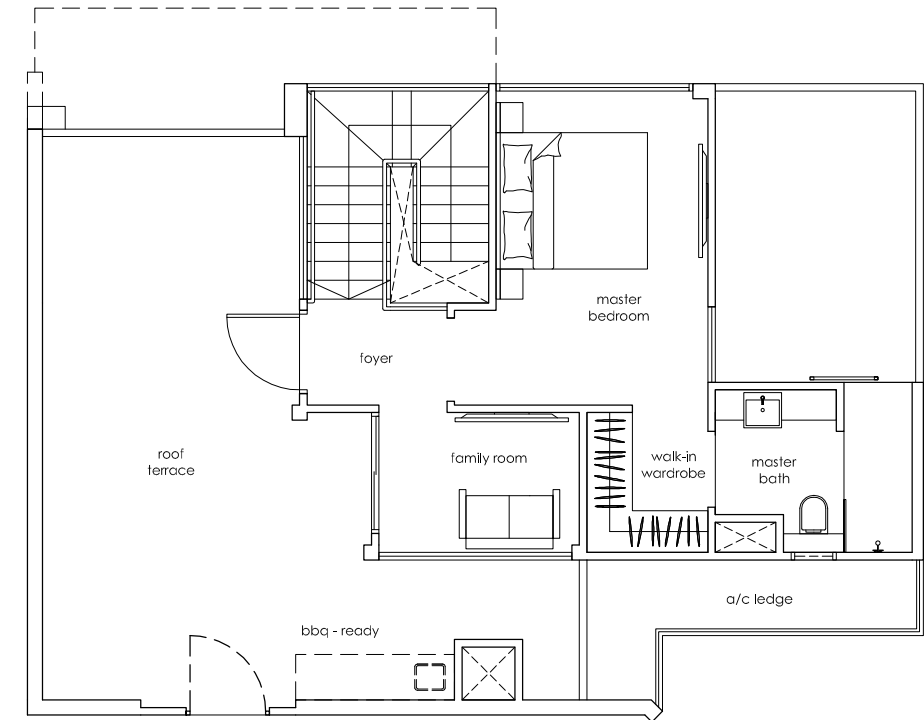
3+1 bedroom penthouse

standard PH2
 186 sqm / 2,002 sqft
 #16-15
 #17-18 (mirrored unit)
 #17-23



lower level

Area includes A/C ledge, balcony, PES, open terrace and void (where applicable). The plans are subject to change as may be required or approved by the relevant authorities. These are not drawn to scale and are for purpose of a visual representation of the different layouts that are available. All areas are approximate and subject to final survey. The developer and its agents cannot be held liable for any inaccuracies.



upper level

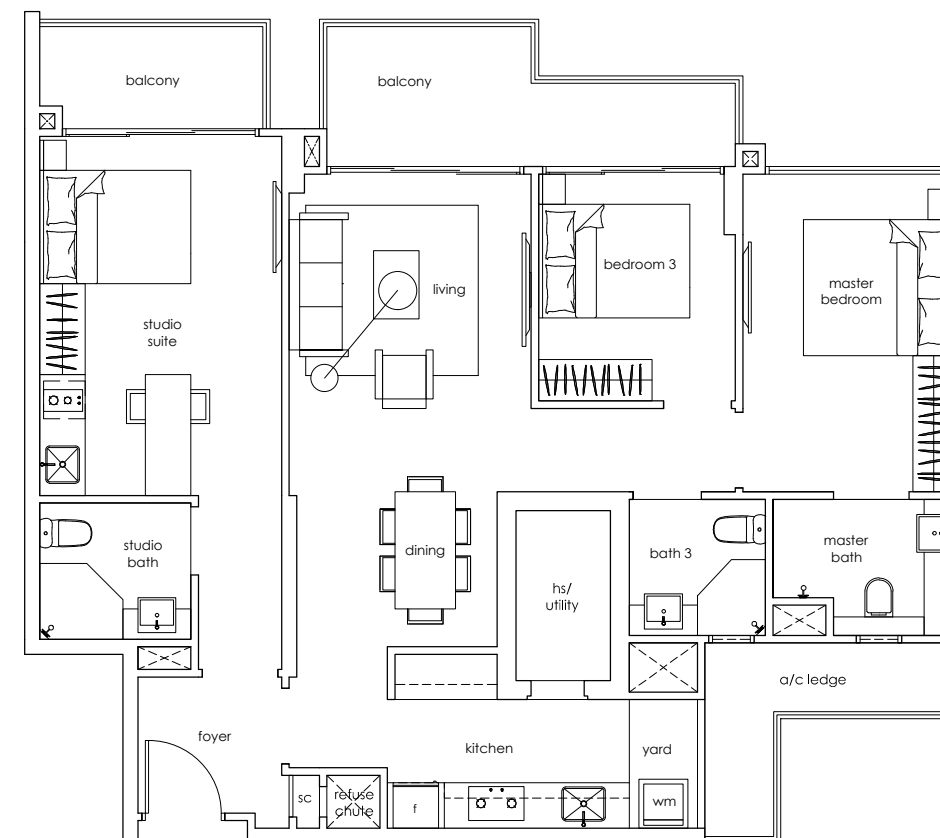
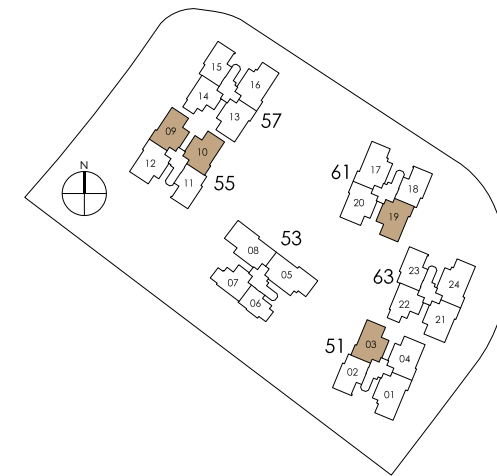
Area includes A/C ledge, balcony, PES, open terrace and void (where applicable). The plans are subject to change as may be required or approved by the relevant authorities. These are not drawn to scale and are for purpose of a visual representation of the different layouts that are available. All areas are approximate and subject to final survey. The developer and its agents cannot be held liable for any inaccuracies.



image by Muji

3 bedroom (dual key)

dual key B4
 114 sqm / 1,227 sqft
 #02 to #16-03
 #03 to #15-09
 #02 to #15-10 (mirrored units)
 #02 to #16-19

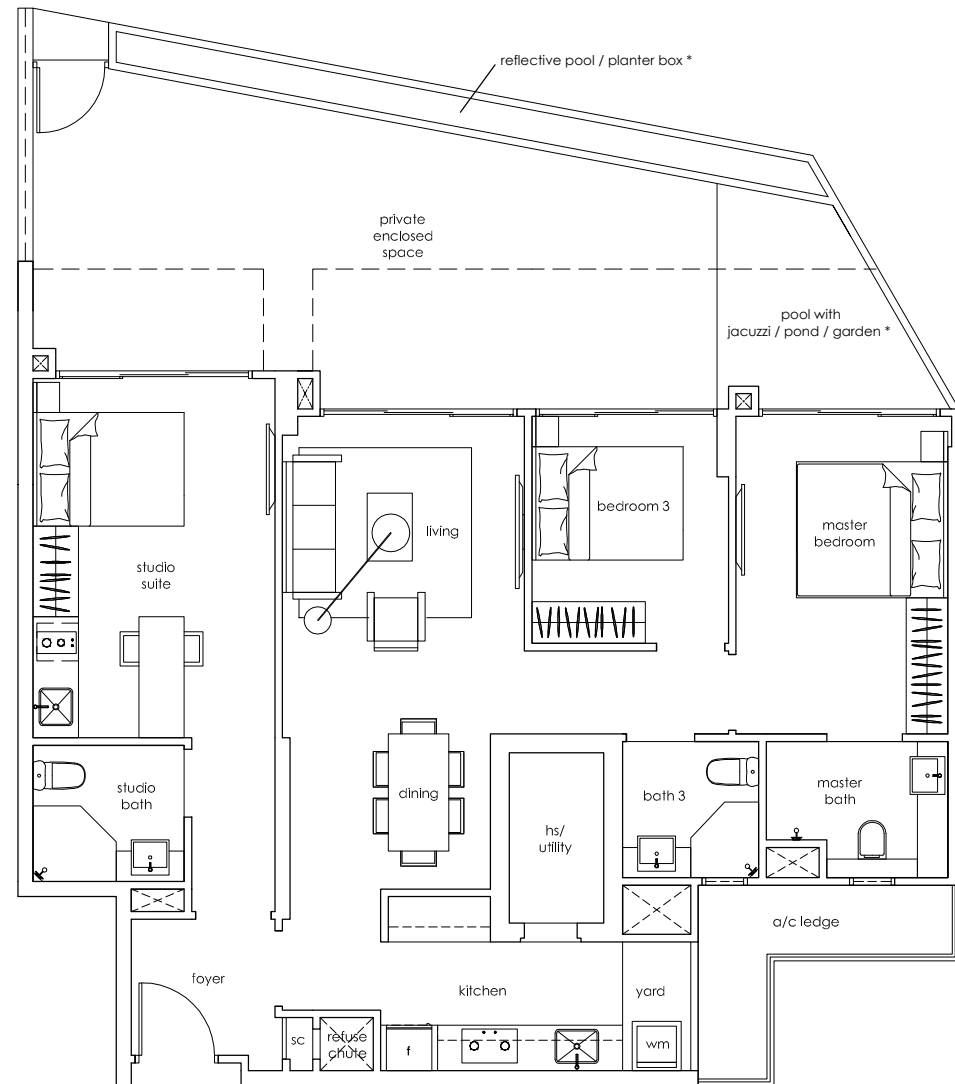
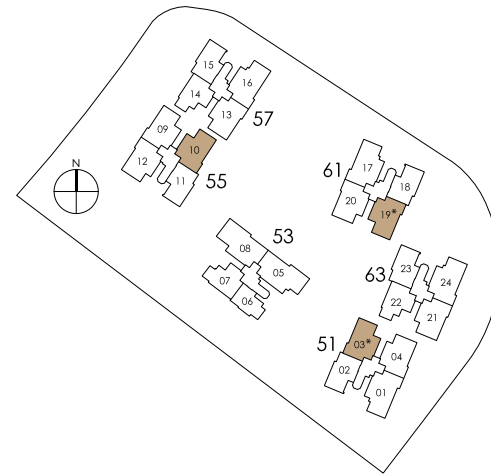


Area includes A/C ledge, balcony, PES, open terrace and void (where applicable). The plans are subject to change as may be required or approved by the relevant authorities. These are not drawn to scale and are for purpose of a visual representation of the different layouts that are available. All areas are approximate and subject to final survey. The developer and its agents cannot be held liable for any inaccuracies.

3 bedroom (dual key)

dual key B4-p1
 147 sqm / 1,582 sqft
 pool with jacuzzi / pond / garden *
 #01-03
 #01-19

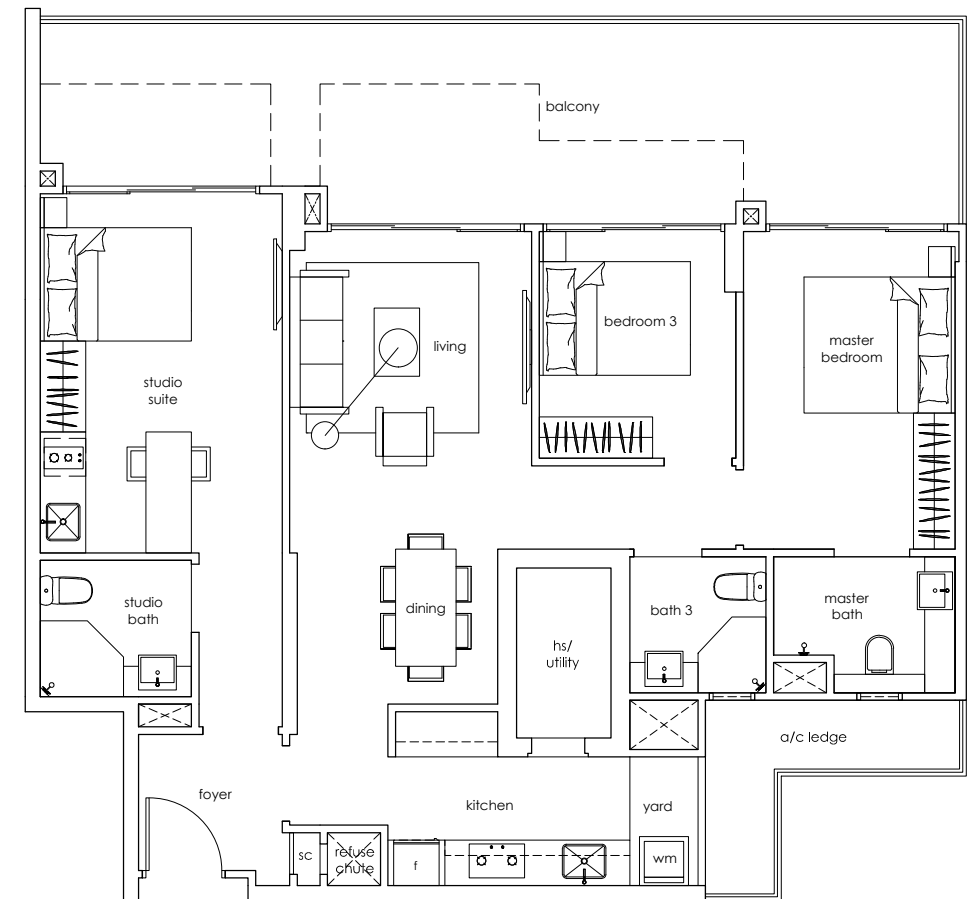
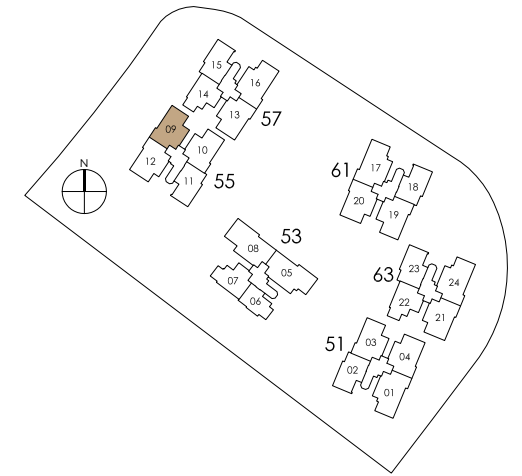
dual key B4-p2
 147 sqm / 1,582 sqft
 #01-10



Area includes A/C ledge, balcony, PES, open terrace and void (where applicable). The plans are subject to change as may be required or approved by the relevant authorities. These are not drawn to scale and are for purpose of a visual representation of the different layouts that are available. All areas are approximate and subject to final survey. The developer and its agents cannot be held liable for any inaccuracies.

3 bedroom (dual key)

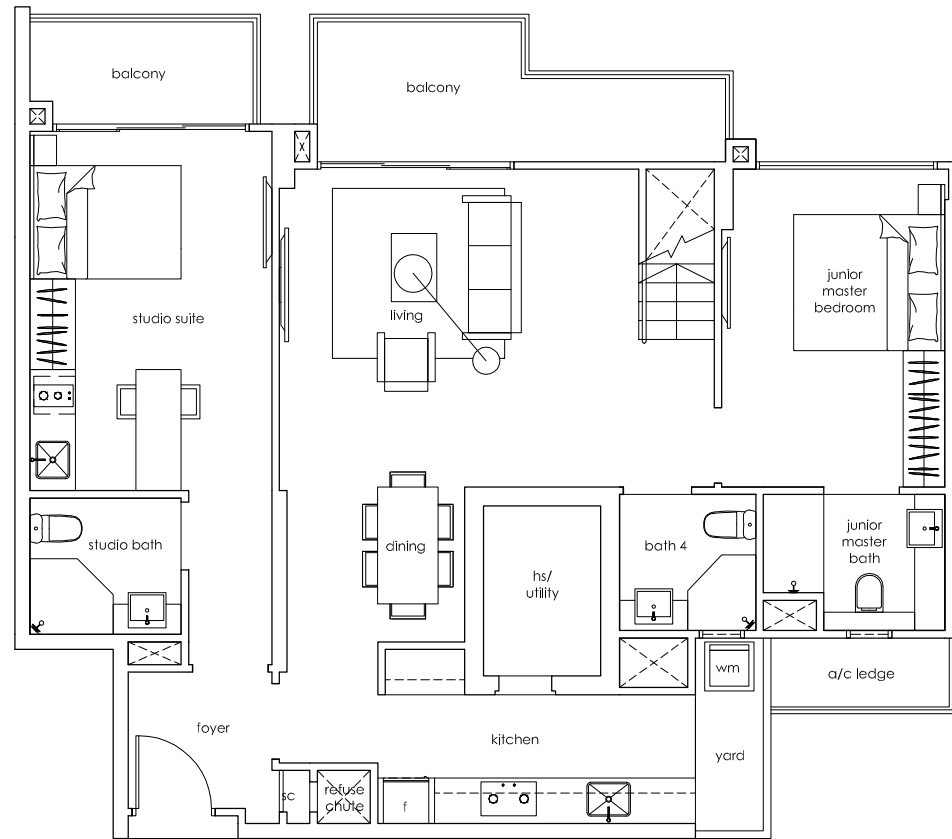
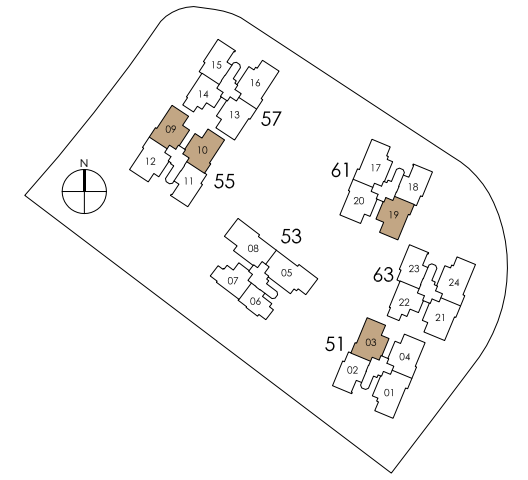
dual key B4a
 133 sqm / 1,432 sqft
 #02-09



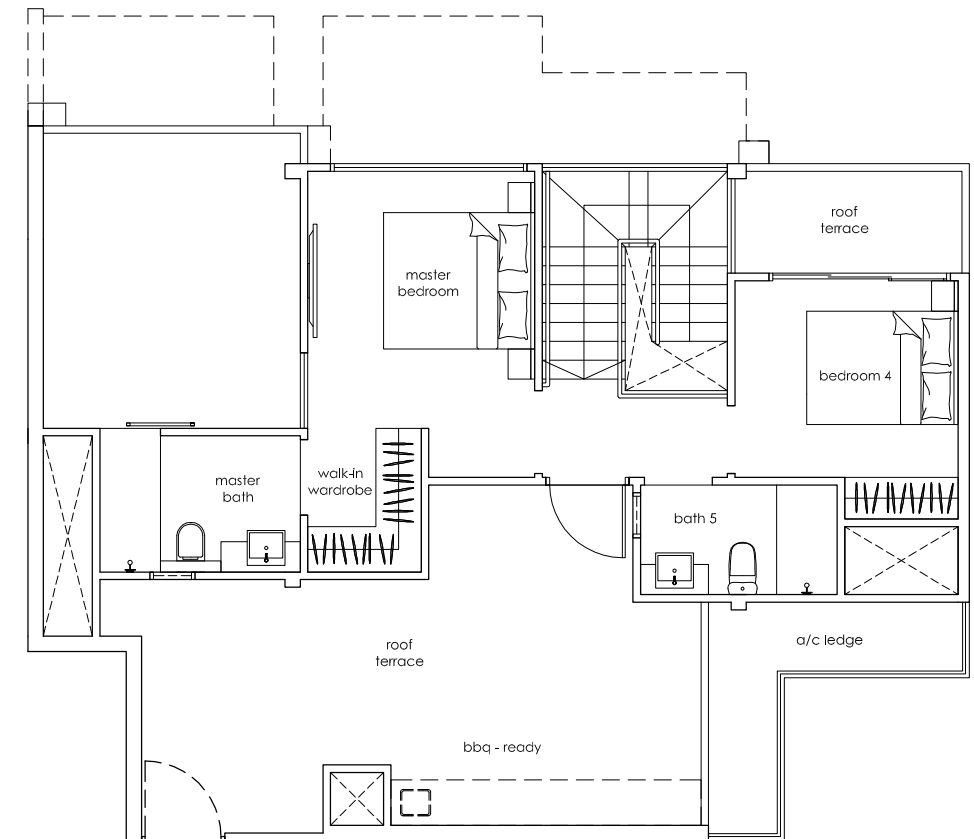
Area includes A/C ledge, balcony, PES, open terrace and void (where applicable). The plans are subject to change as may be required or approved by the relevant authorities. These are not drawn to scale and are for purpose of a visual representation of the different layouts that are available. All areas are approximate and subject to final survey. The developer and its agents cannot be held liable for any inaccuracies.

4 bedroom penthouse

dual key PH3
 211 sqm / 2,271 sqft
 #17-03
 #16-09
 #16-10 (mirrored unit)
 #17-19



lower level



upper level

Area includes A/C ledge, balcony, PES, open terrace and void (where applicable). The plans are subject to change as may be required or approved by the relevant authorities. These are not drawn to scale and are for purpose of a visual representation of the different layouts that are available. All areas are approximate and subject to final survey. The developer and its agents cannot be held liable for any inaccuracies.

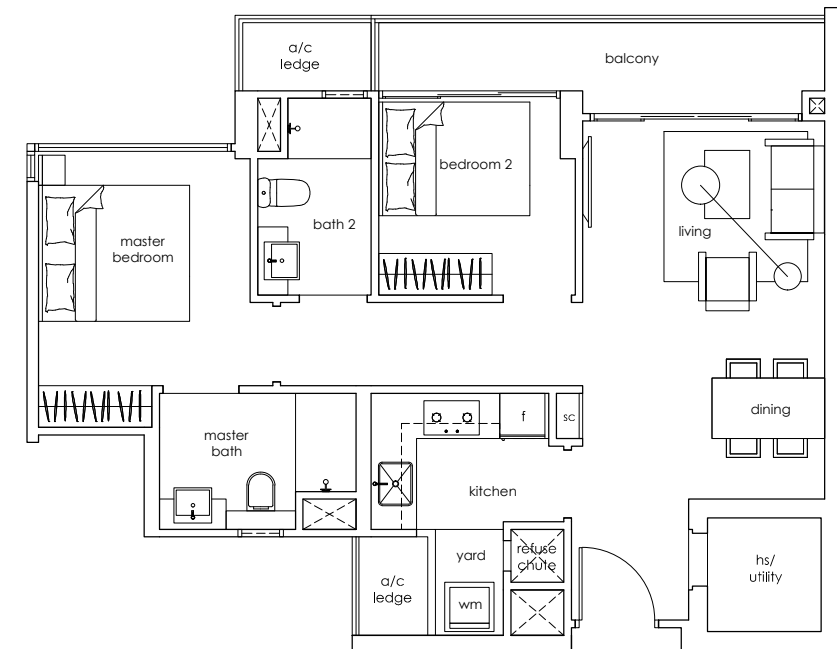
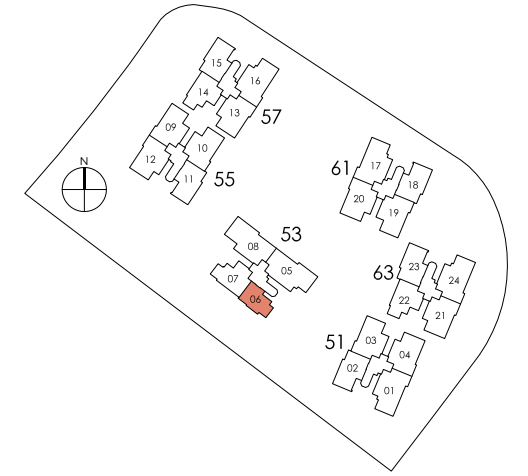
Area includes A/C ledge, balcony, PES, open terrace and void (where applicable). The plans are subject to change as may be required or approved by the relevant authorities. These are not drawn to scale and are for purpose of a visual representation of the different layouts that are available. All areas are approximate and subject to final survey. The developer and its agents cannot be held liable for any inaccuracies.



image by Muji

2 bedroom

standard A1
72 sqm / 775 sqft
#03 to #17-06



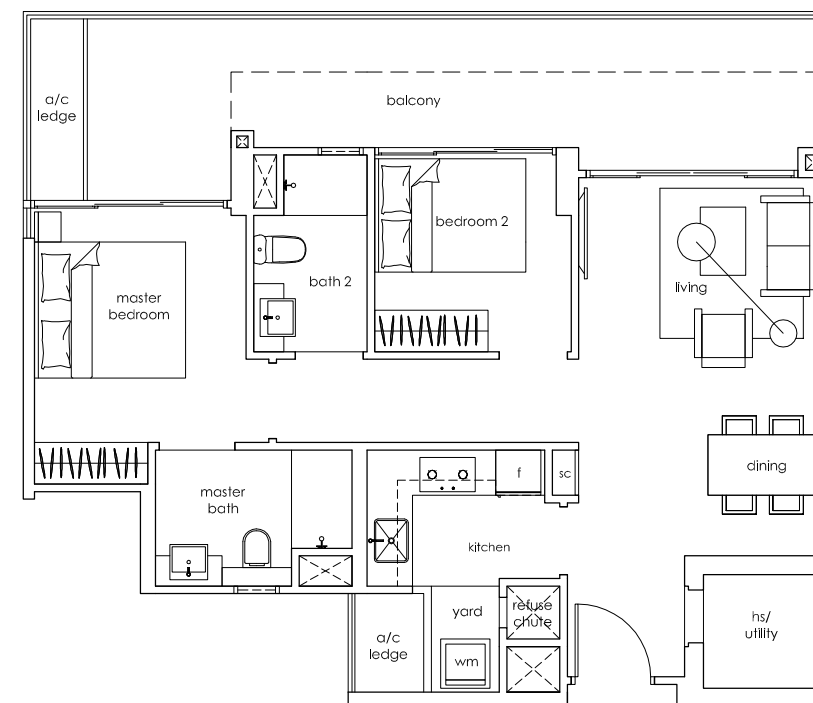
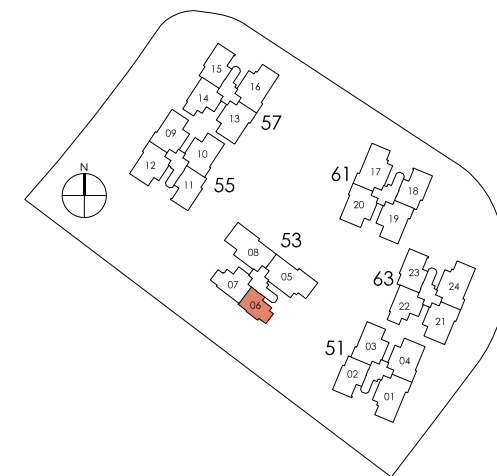
Area includes A/C ledge, balcony, PES, open terrace and void (where applicable). The plans are subject to change as may be required or approved by the relevant authorities. These are not drawn to scale and are for purpose of a visual representation of the different layouts that are available. All areas are approximate and subject to final survey. The developer and its agents cannot be held liable for any inaccuracies.



image by Muji

2 bedroom

standard A1a
85 sqm / 915 sqft
#02-06



Area includes A/C ledge, balcony, PES, open terrace and void (where applicable). The plans are subject to change as may be required or approved by the relevant authorities. These are not drawn to scale and are for purpose of a visual representation of the different layouts that are available. All areas are approximate and subject to final survey. The developer and its agents cannot be held liable for any inaccuracies.