

∞ facilities plan

legend

∞ Pools

- a. 50-m Lap Pool
- b. Pool Spa
- c. Wet Lounge
- d. Children's Pool
- e. Children's Water Play
- f. Sunshine Deck

∞ Sports and Fitness

- g. Recreational Tennis Court
- h. Sky Gym
- i. Fitness Park
- j. Children's Playground
- k. Stretching Station
- l. Foot Reflexology
- m. Jogging Trail

∞ Gathering and Merriment

- n. Club House
- o. Celebration Lawn
- p. BBQ Pits with Alfresco Dining

∞ Relaxation and Rejuvenation

- q. Sky Garden and View Deck
- r. Community Planting
- s. Hammock Forest
- t. Spiral Garden
- u. Tai Chi Garden
- v. Yoga Garden
- w. Rose Garden

∞ Entrance

- x. Guard House
- y. Arrival Boulevard
- z. Drop-Off Terrace

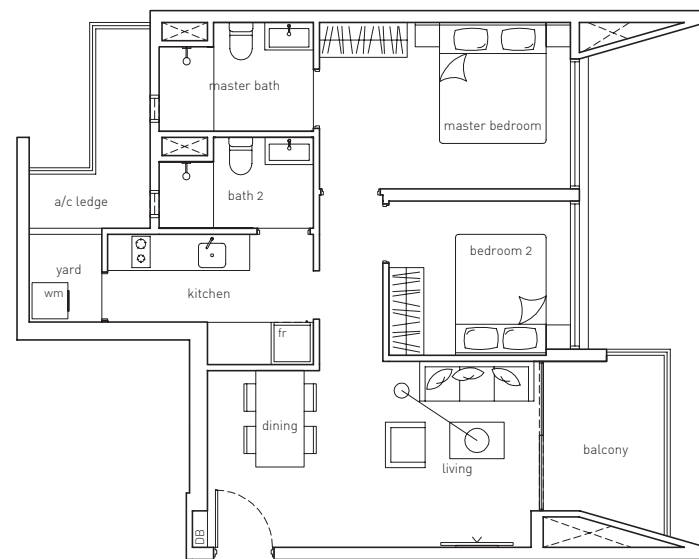


æ floorplan

Type A1

2-Bedroom
71 sqm / 764 sqft

#03-04, #06-04, #09-04,
#12-04, #15-04

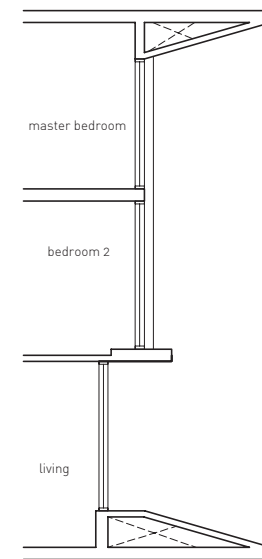


Type A1a

2-Bedroom
65 sqm / 700 sqft

#04-04, #05-04, #07-04,
#08-04, #10-04, #11-04,
#13-04, #14-04, #16-04

unit with high ceiling in
bedrooms, living
#17-04

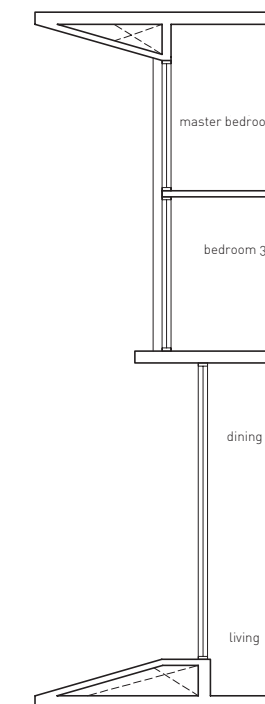


Type B1a

3-Bedroom
82 sqm / 883 sqft

#02-06, #04-06, #05-06,
#07-06, #08-06, #10-06,
#11-06, #13-06, #14-06,
#16-06

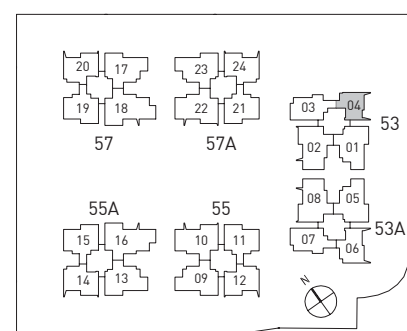
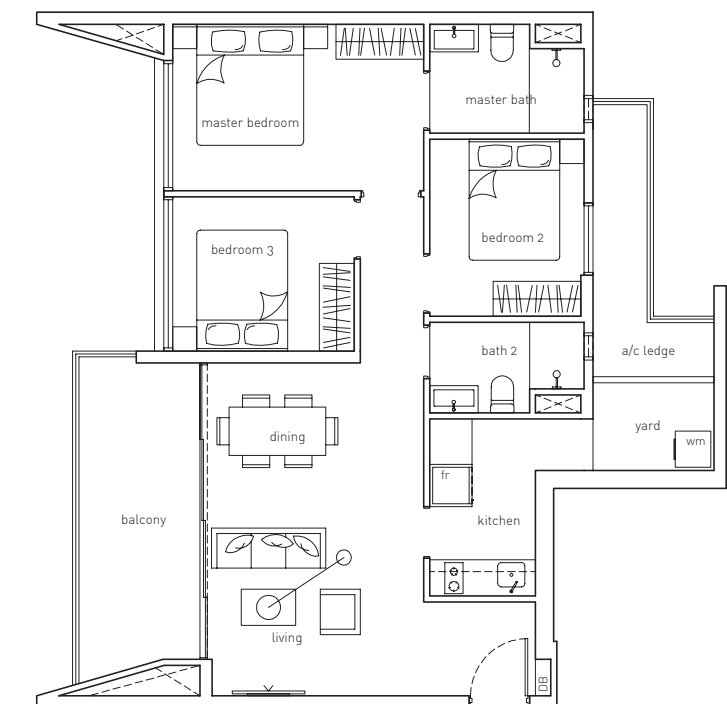
unit with high ceiling in front
facing bedrooms, living, dining
#17-06



Type B1

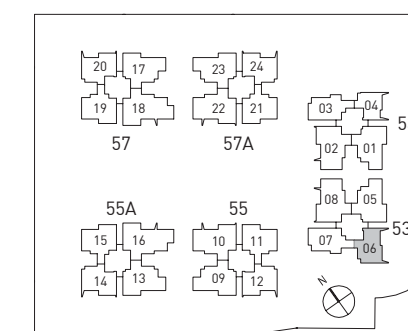
3-Bedroom
93 sqm / 1001 sqft

#03-06, #06-06, #09-06,
#12-06, #15-06



Area includes A/C ledge, balcony, PES and void (where applicable). The plans are subject to change as may be required or approved by the relevant authorities. The plans are not drawn to scale and are for purpose of a visual representation of different layouts that are available. All area are approximate and subject to final survey. The developer and its agent cannot be held liable for inaccuracies.

* at 1st storey units, PES in lieu of balcony



Area includes A/C ledge, balcony, PES and void (where applicable). The plans are subject to change as may be required or approved by the relevant authorities. The plans are not drawn to scale and are for purpose of a visual representation of different layouts that are available. All area are approximate and subject to final survey. The developer and its agent cannot be held liable for inaccuracies.

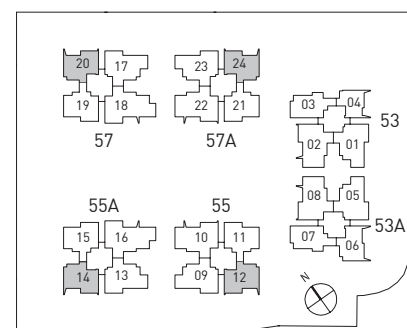
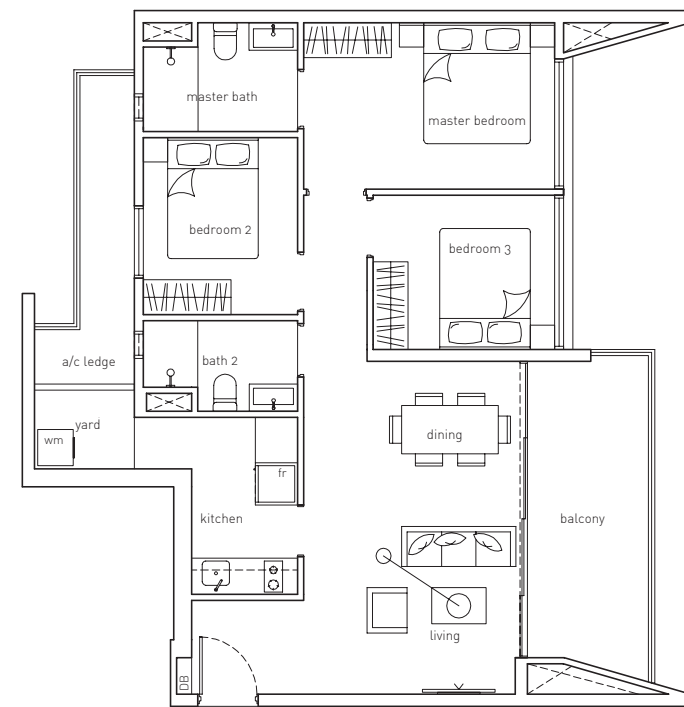
* at 1st storey units, PES in lieu of balcony

æ floorplan

Type B2

3-Bedroom
92 sqm / 990 sqft

- #02-12 to #16-12
- #02-14 to #16-14 (mirrored)
- #02-20 to #16-20
- #03-24 to #16-24 (mirrored)



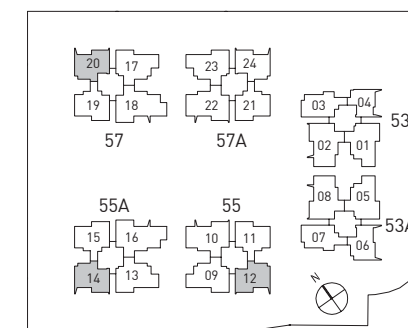
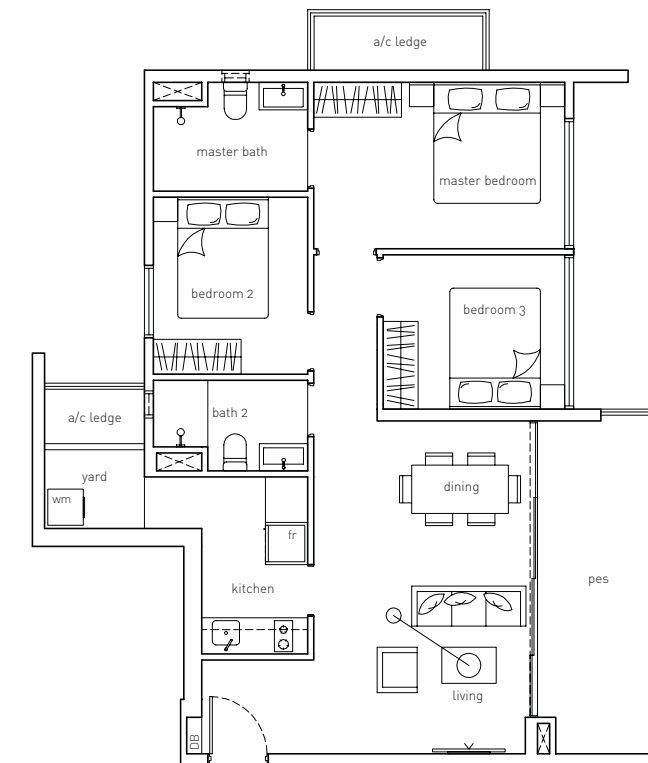
Area includes A/C ledge, balcony, PES and void (where applicable). The plans are subject to change as may be required or approved by the relevant authorities. The plans are not drawn to scale and are for purpose of a visual representation of different layouts that are available. All area are approximate and subject to final survey. The developer and its agent cannot be held liable for inaccuracies.

* at 1st storey units, PES in lieu of balcony

Type B2g

3-Bedroom
92 sqm / 990 sqft

- #01-12
- #01-14 (mirrored)
- #01-20



Area includes A/C ledge, balcony, PES and void (where applicable). The plans are subject to change as may be required or approved by the relevant authorities. The plans are not drawn to scale and are for purpose of a visual representation of different layouts that are available. All area are approximate and subject to final survey. The developer and its agent cannot be held liable for inaccuracies.

* at 1st storey units, PES in lieu of balcony

æ floorplan

Type B3

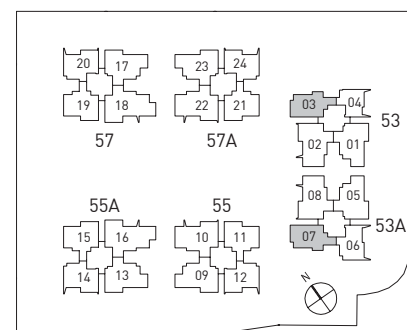
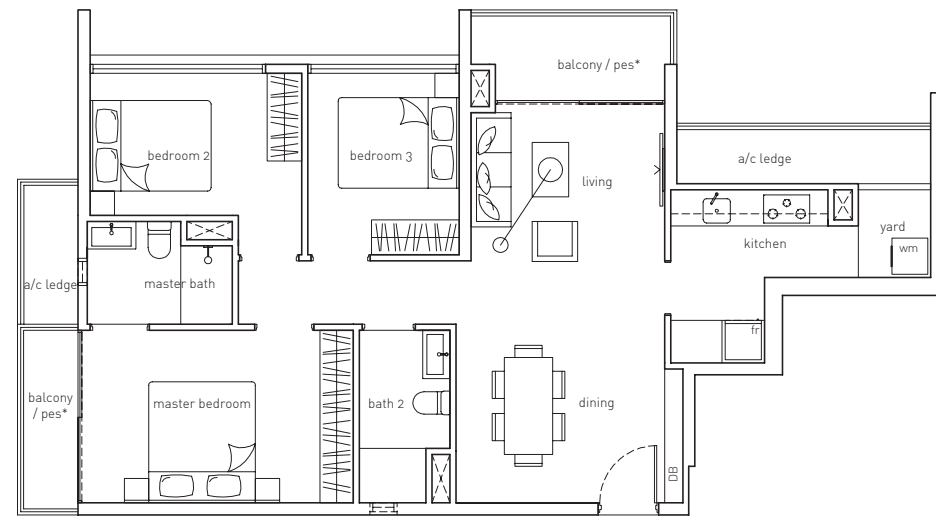
3-Bedroom
93 sqm / 1001 sqft

#04-03 to #15-03
#02-07 to #15-07 (mirrored)

Type B3g

3-Bedroom
93 sqm / 1001 sqft

#01-07 (mirrored)



Area includes A/C ledge, balcony, PES and void (where applicable). The plans are subject to change as may be required or approved by the relevant authorities. The plans are not drawn to scale and are for purpose of a visual representation of different layouts that are available. All area are approximate and subject to final survey. The developer and its agent cannot be held liable for inaccuracies.

* at 1st storey units, PES in lieu of balcony

Type BP

3-Bedroom
102 sqm / 1098 sqft

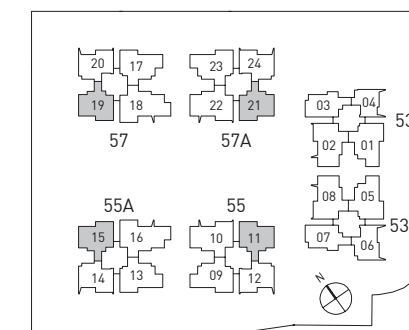
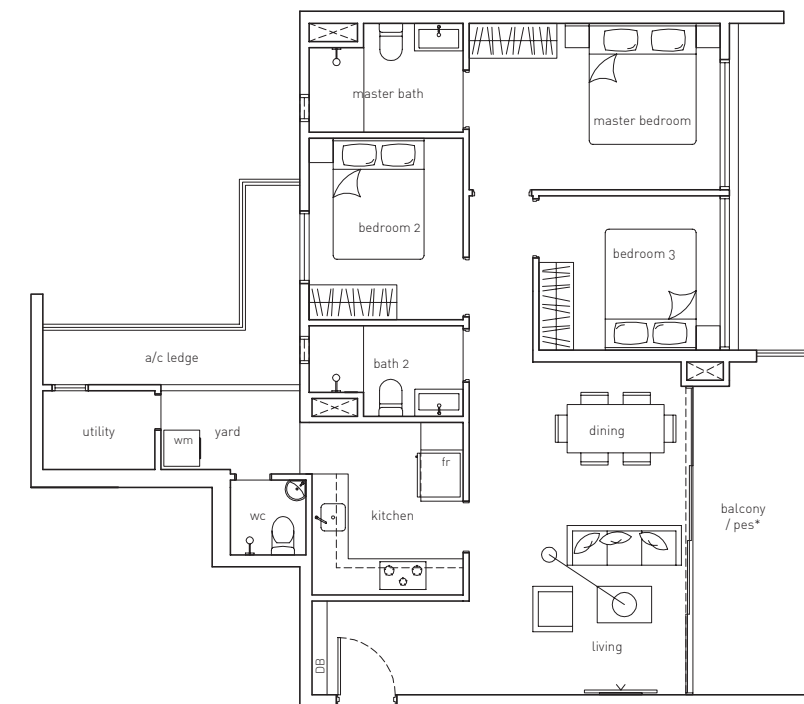
#02-11 to #16-11 (mirrored)
#02-15 to #16-15
#02-19 to #16-19 (mirrored)
#02-21 to #16-21

unit with high ceiling in front facing bedrooms, living, dining
#17-11 (mirrored), #17-15
#17-19 (mirrored), #17-21

Type BPg

3-Bedroom
102 sqm / 1098 sqft

#01-11 (mirrored)
#01-15
#01-19 (mirrored)
#01-21



Area includes A/C ledge, balcony, PES and void (where applicable). The plans are subject to change as may be required or approved by the relevant authorities. The plans are not drawn to scale and are for purpose of a visual representation of different layouts that are available. All area are approximate and subject to final survey. The developer and its agent cannot be held liable for inaccuracies.

* at 1st storey units, PES in lieu of balcony

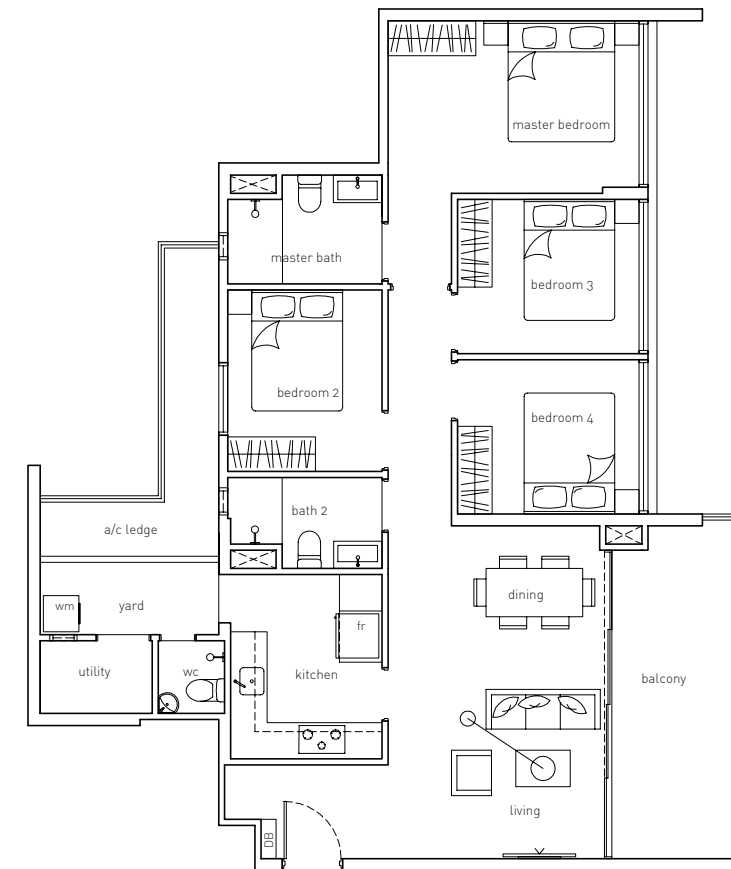
æ floorplan

Type CP

4-Bedroom
114 sqm / 1227 sqft

- #02-01 to #16-01 (mirrored)
- #02-05 to #16-05
- #02-09 to #15-09 (mirrored)
- #02-13 to #15-13
- #02-17 to #15-17 (mirrored)
- #02-23 to #15-23

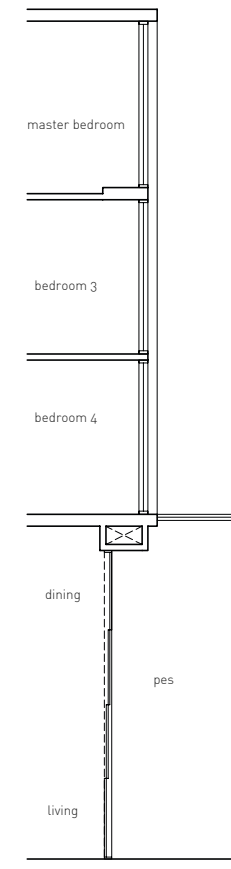
unit with high ceiling in front facing bedrooms, living, dining
#17-01 (mirrored)
#17-05



Type CPg

4-Bedroom
114 sqm / 1227 sqft

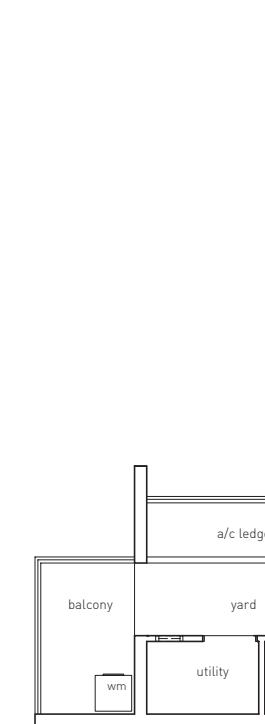
- #01-09 (mirrored)
- #01-13
- #01-17 (mirrored)
- #01-23



Type CJt

4-Bedroom
125 sqm / 1346 sqft

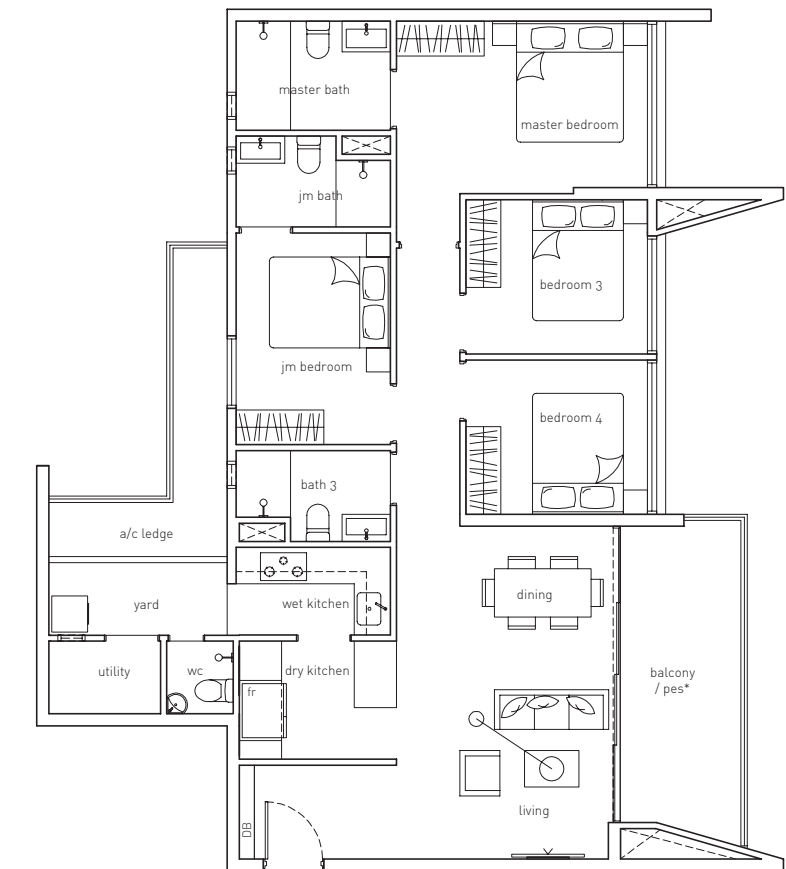
- unit with high ceiling in bedrooms, living, dining
- #17-10
- #17-22 (mirrored)



Type CJ

4-Bedroom
121 sqm / 1302 sqft

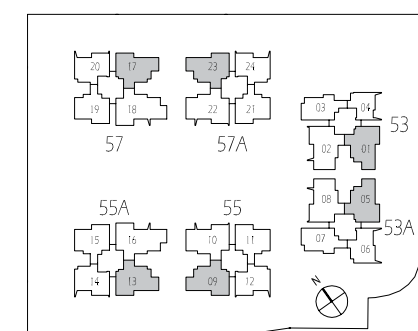
- #02-02 to #15-02
- #02-08 to #15-08 (mirrored)
- #02-10 to #16-10
- #02-22 to #16-22 (mirrored)



Type CJg

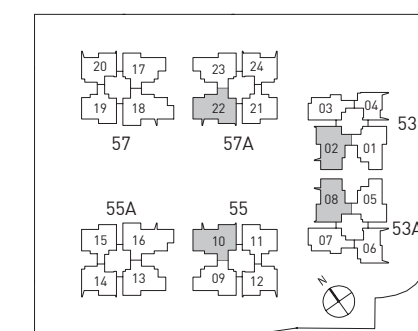
4-Bedroom
121 sqm / 1302 sqft

- #01-02
- #01-08 (mirrored)
- #01-10
- #01-22 (mirrored)



Area includes A/C ledge, balcony, PES and void (where applicable). The plans are subject to change as may be required or approved by the relevant authorities. The plans are not drawn to scale and are for purpose of a visual representation of different layouts that are available. All area are approximate and subject to final survey. The developer and its agent cannot be held liable for inaccuracies.

* at 1st storey units, PES in lieu of balcony



Area includes A/C ledge, balcony, PES and void (where applicable). The plans are subject to change as may be required or approved by the relevant authorities. The plans are not drawn to scale and are for purpose of a visual representation of different layouts that are available. All area are approximate and subject to final survey. The developer and its agent cannot be held liable for inaccuracies.

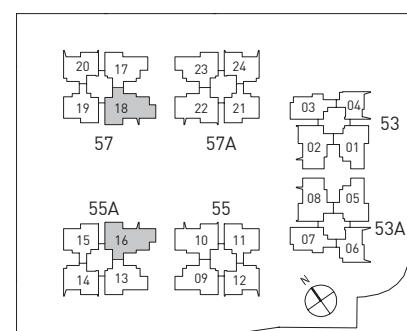
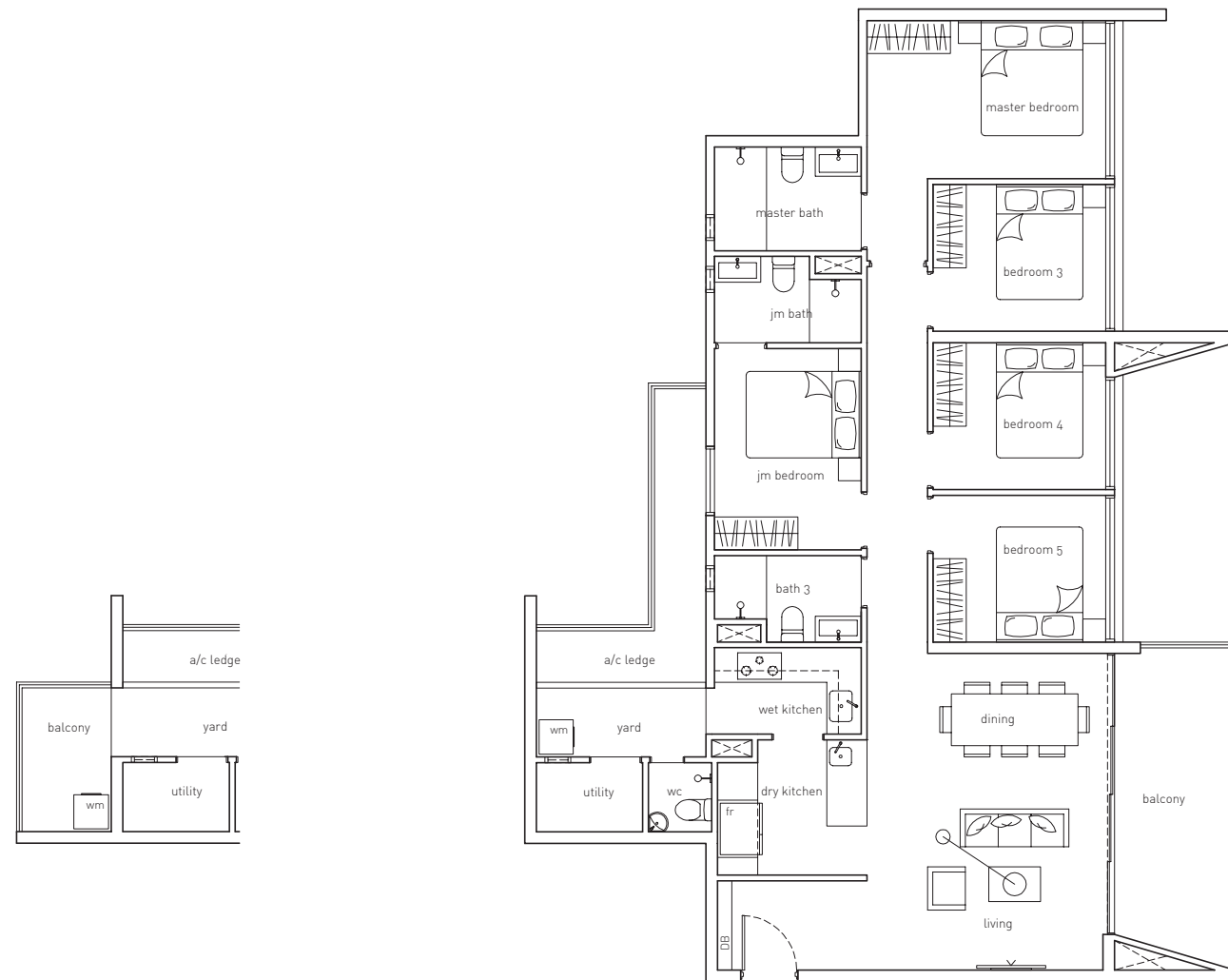
* at 1st storey units, PES in lieu of balcony

æ floorplan

Type DJt

5-Bedroom
141 sqm / 1518 sqft

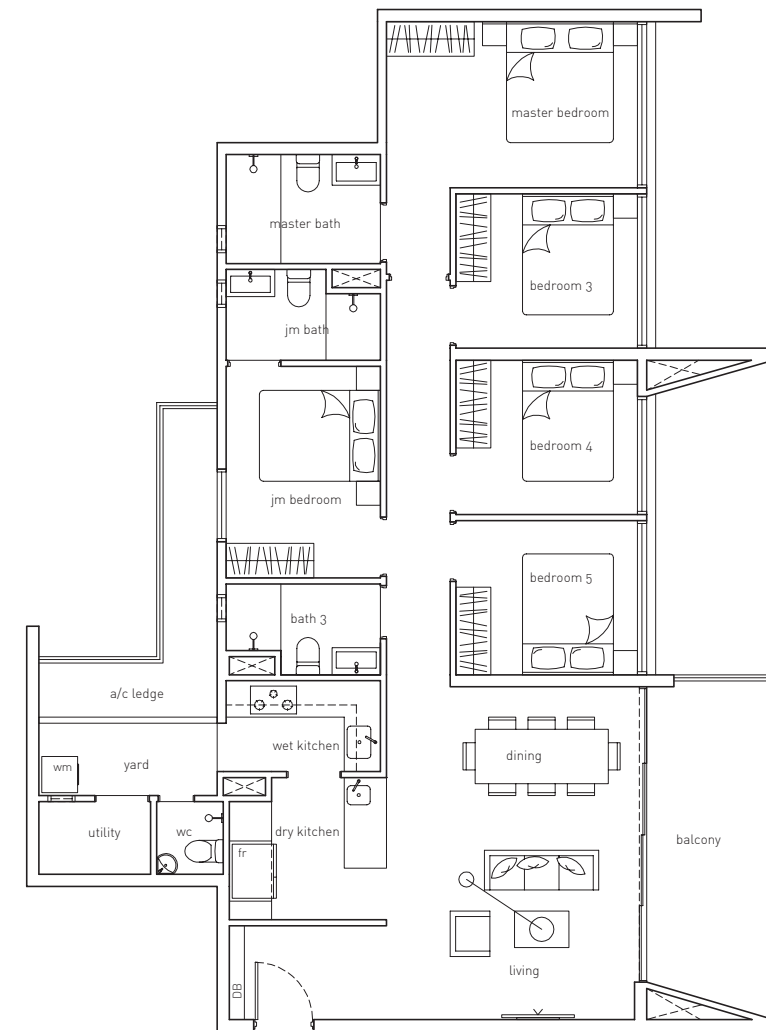
unit with high ceiling in
bedrooms, living, dining
#17-16 (mirrored)
#17-18



Type DJ

5-Bedroom
137 sqm / 1475 sqft

#02-16 to #16-16 (mirrored)
#02-18 to #16-18



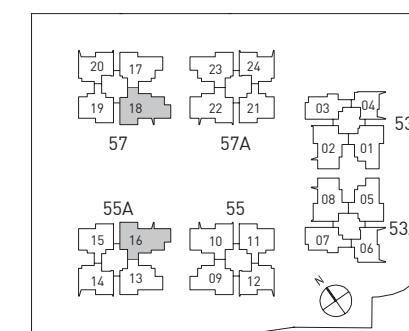
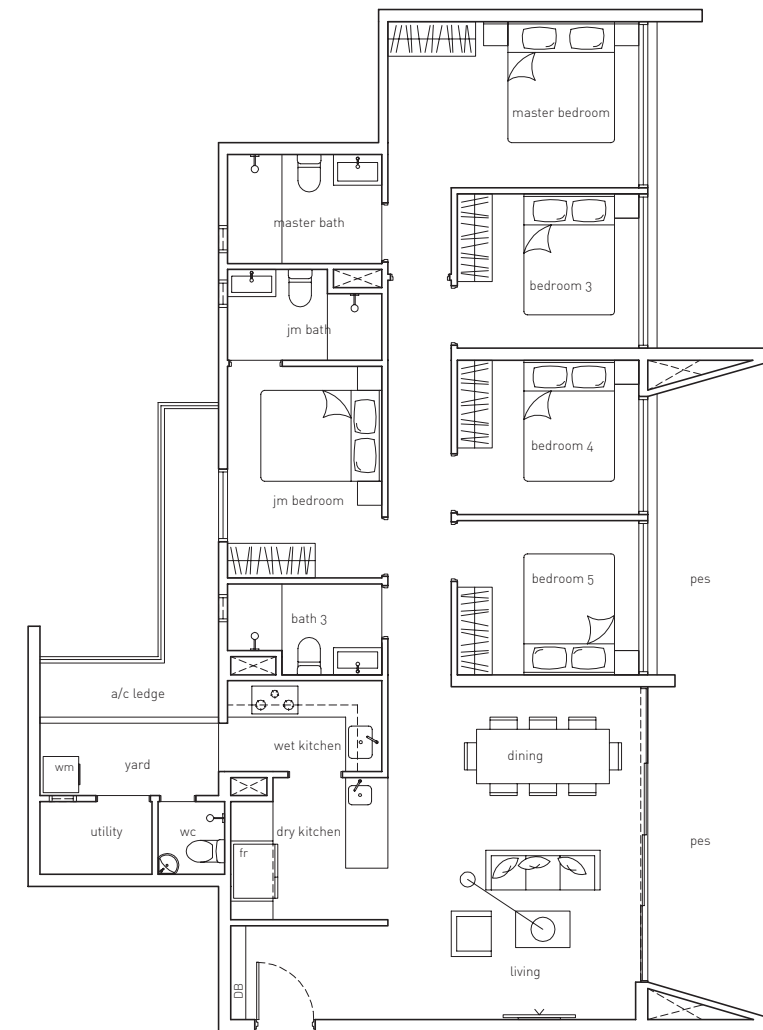
Area includes A/C ledge, balcony, PES and void (where applicable). The plans are subject to change as may be required or approved by the relevant authorities. The plans are not drawn to scale and are for purpose of a visual representation of different layouts that are available. All area are approximate and subject to final survey. The developer and its agent cannot be held liable for inaccuracies.

* at 1st storey units, PES in lieu of balcony

Type DJg

5-Bedroom
147 sqm / 1582 sqft

#01-16 (mirrored)
#01-18



Area includes A/C ledge, balcony, PES and void (where applicable). The plans are subject to change as may be required or approved by the relevant authorities. The plans are not drawn to scale and are for purpose of a visual representation of different layouts that are available. All area are approximate and subject to final survey. The developer and its agent cannot be held liable for inaccuracies.

* at 1st storey units, PES in lieu of balcony